

Genetic Diversity of Gorontalo Local Cattle Based on Microsatellite DNA

by Safriyanto Dako¹

Submission date: 09-Jun-2023 04:33PM (UTC+0800)

Submission ID: 2112371466

File name: 1677819870AAVS_11_4_544-551.pdf (769.93K)

Word count: 5229

Character count: 27806



Genetic Diversity of Gorontalo Local Cattle Based on Microsatellite DNA

SAFRIYANTO DAKO¹, NIBRAS KARNAIN LAYA¹, SYUKRI I GUBALI¹, ARI ARDIANTORO², V.M ANI NURGIARTININGSIH³, GATOT CIPTADI³, DESINTA WULANDARI³, SUYADI SUYADI^{3*}

¹Department of Animal Husbandry, Faculty of Agriculture, Gorontalo University, Gorontalo 96128, Indonesia;

²Biotechnology Laboratory, Faculty of Animal Science, Universitas Brawijaya Malang, East Java 65145, Indonesia;

³Faculty of Animal Science, Universitas Brawijaya Malang, East Java 65145, Indonesia.

Abstract | Microsatellites are one option for characterizing cattle populations; that information can be used as a basis for the development and maintenance of local cattle. This study aims to evaluate genetic diversity and relationships using microsatellite markers between the populations of Gorontalo cattle in Gorontalo Province, Indonesia, using 3 microsatellite markers. A total of 126 samples of local bovine blood were collected, which consisted of North Gorontalo (n=28), Gorontalo (n=52), Bonebolango (n=37), PO (n=3), and Bali (n=6), were used in this study. The Genomic DNA Mini Kits were used for DNA extraction for an analysis fragment in the microsatellite DNA region using ILSTS017, HEL13, and BM1818 primers. A total of 74 alleles were identified across five populations. The expected heterozygosity ranged from 0.407±0.216 (Bali) to 0.716±0.050 (Gorontalo), and the observed heterozygosity ranged from 0.471±0.084 (Bonebolango) to 0.778±0.222 (PO). F statistical analysis includes F_{IS} 0.038, F_{IT} 0.248, and F_{ST} 0.231. The three microsatellite markers were moderate (0.25-0.5) to highly informative ($PIC > 0.5$). The research showed that Bali cattle were distinct from all other cattle populations, while Gorontalo-Bonebolango admixture and North Gorontalo cattle were mixed with the PO cattle population. In conclusion, markers used were highly informative and polymorphic in investigating genetic diversity in Bonebolango, Gorontalo, and North Gorontalo populations, while the genetic relationship among cattle populations was divided into two main clusters, i.e., the Bali and PO populations, which closely reflect the breeding process in the research area. This information will be useful for future development and maintenance of local cattle in Gorontalo Province, Indonesia.

Keywords | Microsatellite, Genetic diversity, Genetic relationships, Local cattle, Gorontalo

Received | December 07, 2022; Accepted | February 01, 2023; Published | March 03, 2023

*Correspondence | Suyadi Suyadi, Faculty of Animal Science, Universitas Brawijaya Malang, East Java 65145, Indonesia; E-mail: suyadi@ub.ac.id

Citation | Dako S, Laya NK, Gubali SI, Ardiantoro A, Nurgiansih VMA, Ciptadi G, Wulandari D, Suyadi S (2023). Genetic diversity of Gorontalo local cattle based on microsatellite DNA. Adv. Anim. Vet. Sci. 11(4):544-551.

DOI | <https://dx.doi.org/10.17582/journal.aavs/2023/11.4.544.551>

ISSN (Online) | 2307-8316



Copyright: 2023 by the authors. Licensee ResearchersLinks Ltd, England, UK.

This article is an open access article distributed under the terms and conditions of the Creative Commons Attribution (CC BY) license (<https://creativecommons.org/licenses/by/4.0/>).

INTRODUCTION

The increased demand for livestock products as human food illustrates an increase in human quality of life but challenges the genetic availability of livestock. The development of local livestock as a provider of genetic resources needs to be preserved because local livestock have the ability to adapt to their own environment. This genetic

ability is expected to produce more productive livestock (Gobel et al., 2021; Pribadi et al., 2015; Ilham et al., 2016).

Gorontalo province is located in Indonesia, specifically between Central Sulawesi and North Sulawesi. The potential for cattle in Gorontalo Province is 192,229 heads (BPS, 2020). There are several types of cattle that are well developed in the Gorontalo region, such as Bali cattle, PO cattle,

Table 1: Bovine microsatellite markers information used in study.

Marker	Chromosome	Primer sequences (5'>3')	Primer attachment temperatures (°C)	Length of DNA base (Bp)	Genebank access
ILSTS017				105-125	
HEL13 (D11S15)	11	F: TAAGGACTTGAGATAAGGAG R: CCATCTACCTCCATCTTAAC	52-57	178-200	X65207
BM1818 (D23S21)	23	F: AGCTGGGAATATAACCAAAGG R: AGTGCTTTCAAGGTCCATGC	56-60	248-278	G18391

Brahman cattle, and other local cattle that have not been identified. Local cattle that have not been identified are often called Diiti/ordinary/Local cattle. The existence of local cattle has a different phenotypic appearance compared to Bali and PO cattle. Naturally, livestock that adapts to the environment will bring up different phenotype variations in the population. Muladno (1994) state that genetic change can be used for the process of evolution of livestock populations/breeds by looking at the genetic distance of population. Adaptability of local livestock describes a relative ability of an individual to survive and reproduce next generation to ensure continued survival of the population. Adaptations are mutations or genetic changes that help an organism or animal survive in its environment. Genetic adaptation is a biological characteristic with a heritable basis that improves reproduction and/or survival and results from evolution by natural selection. Increased animal performance based on genetic improvement results in more product produced per animal. Genetic improvements made in one generation are passed on to the next (Naskar et al., 2012; Mueller and Eenennaam, 2022). Efforts to maintain the genetic abilities that are formed in local cattle require adequate information, including qualitative characteristics, morphometrics, productivity, and genetics information, so that these local livestock can be developed in the future.

Microsatellites are an option for characterizing cattle breeds or populations (Setta et al., 2004; Rincon et al., 2007); they are also used to answer questions related to genetic diversity and genetic relationships among cattle populations (Rincon et al., 2007; Sun et al., 2008; Chaudhari et al., 2009). Microsatellite loci are widely used because of their high polymorphism, co-dominance, and relative abundance in the genome (Rincon et al., 2007; Karthickeyan et al., 2009). The study of microsatellite DNA diversity in local Indonesian cattle has been reported previously (Satriani et al., 2002; Sarbaini, 2004; Winaya et al., 2007; Abdullah, 2008; Sutarno et al., 2015; Septian and Sumantri, 2015; Agung et al., 2015, 2019), but has never been reported in local cattle in Gorontalo. It is necessary to have an overview of the genetic diversity analysis of local Gorontalo cattle based on microsatellite DNA analysis. The importance of this information can be used as a basis for the development and maintenance of local cattle. This

study aims to evaluate genetic diversity and relationships using microsatellite markers between the populations of Gorontalo cattle in Gorontalo Province, Indonesia.

MATERIALS AND METHODS

BLOOD SAMPLES AND DNA ISOLATION

All procedures related to animal use in this study were approved by the Animal Care and Use Committee of Brawijaya University under regulation number 145-KEP-UB-2022 (Ethical Clearance). A total of 126 samples of local bovine blood were collected from 3 different regions: Gorontalo (n = 52), Bonebolango (n = 37), and North Gorontalo (n = 28), plus the PO (n = 3) and Bali (n = 6) population samples in the Gorontalo province, were used in this study. Meanwhile, blood samples were analyzed at the Biotechnology Laboratory, Faculty of Animal Science, Universitas Brawijaya, Malang. Blood was collected from the vena coxygealis of the cattle. The DNA was isolated using Genomic DNA Mini Kits. The DNA isolation procedures followed the protocol instructions.

PRIMER AND DNA AMPLIFICATION

A total of 3 bovine microsatellite markers were used in the PCR process. The markers consisted of ILSTS017, HEL13, and BM1818 (Table 1). The PCR reaction contained a mixture of 1 µL DNA template (50–100 ng/µL) and 30 µL PCR premix. The PCR premix consisted of 0.4 µL primer (10 pmol/µL), 15 µL Go Taq Green Master Mix (Promega, USA), and 14.2 µL Nucleus Free Water (NFW). The PCR thermal cycler conditions are shown in Table 2. The PCR product visualization methods were based on Susilorini et al. (2022). Microsatellite fragment analysis was conducted at First Base Laboratory, Selangor, Malaysia.

Table 2: The PCR thermal cycler condition.

PCR Step	Temperature (°C)	Time	Number of cycle
Pre-denaturation	95	5 minutes	Once
Denaturation	95	30 s	35 times
Annealing	58	45 s	
Extension	72	1 minute	
Final extension	72	5 minutes	Once

MICROSATELLITE DATA ANALYSIS

The fragment analysis result was processed to get allele size data. Allele data was then converted using Convert version 1.31 for further analysis. The converted data were analyzed using Cervus version 3.0.7 to generate observed heterozygosity (HO), expected heterozygosity (HE), frequency/number of alleles, polymorphism information content (PIC) values, and Hardy-Weinberg (HW) equilibrium. GenAlEx 6.51 b2 was used to generate genetic differentiation (FST), the rate of inbreeding between populations (FIS), the rate of inbreeding in populations (FIT), and principal coordinate analysis (PCoA) to determine the genetic relationship between livestock breeds. Genetic structures were analyzed using POPTREEW (POPTREEW website version) (Takezaki et al., 2014) to generate the reconstruction of phylogeny trees between populations and genetic distance.

RESULT AND DISCUSSION

MICROSATELLITE POLYMORPHISMS AND GENETIC DIVERSITY

Studies on the determination of genetic diversity in Gorontalo cattle based on microsatellite markers aren't available, so this study was conducted to find information about its diversity. The polymorphism of molecular genetics and the F-statistic belonging to each locus are summarized in Tables 3 and 4. A total of 74 alleles were detected through the 3 markers analyzed in entire populations: 8 alleles were detected in Bali cattle, 9 alleles in PO cattle, 20 alleles in Bonebolango cattle, 21 alleles in Gorontalo cattle, and 16 alleles in North Gorontalo cattle. The observed heterozygosity (OH) was 0.474, 0.407, 0.737, and the expected heterozygosity (EH) was 0.712, 0.658, and 0.829 for ILSTS017, HEL013, and BM1818, respectively.

Table 3: F Statistics (F_{IS} , F_{IT} , F_{ST}) between five cattle population.

Lokus	N	Ho	He	PIC	HW	F_{IS}	F_{IT}	F_{ST}	Nm
ILSTS017	95	0.474	0.712	0.699	***	0.412	0.530	0.200	0.999
HEL013	86	0.407	0.658	0.601	**	0.067	0.214	0.157	1.342
BM1818	95	0.737	0.803	0.803	***	-0.017	0.157	0.068	3.442
Mean						0.154	0.265	0.142	1.928
SD						0.131	0.140	0.039	0.764

Note: N=number of sample; Ho=observed heterozygosity; He=expected heterozygosity; PIC=polymorphism information content; HW= Hardy-Weinberg Equilibrium; FIS= inter-population inbreeding rate; FIT= inbreeding rate in population; FST= genetic differentiation; Nm= gene flow.

Table 4: Number of alleles (Na), observed heterozygosity (Ho), and expected (He), and Polymorphism Information Content in five cattle population in each loci.

Pop	Lokus	N	Na	Nc	PIC	Ho	He	HW
Bali	ILSTS017	6	3	1.946	0.424	0.167	0.530	ND
	HEL013	6	5	3.600	0.680	0.833	0.788	ND
	BM1818	6	6	5.143	0.777	0.833	0.879	ND
PO	ILSTS017	3	2	1.800	0.346	0.000	0.533	ND
	HEL013	3	3	2.571	0.535	1.000	0.733	ND
	BM1818	3	4	3.600	0.671	1.000	0.867	ND
Bolongo	ILSTS017	22	8	2.907	0.627	0.364	0.671	ND
	HEL013	17	4	2.429	0.513	0.412	0.606	ND
	BM1818	22	8	4.523	0.754	0.636	0.797	ND
Gorontalo	ILSTS017	41	9	3.543	0.682	0.488	0.727	*
	HEL013	37	5	2.700	0.564	0.351	0.638	*
	BM1818	41	7	5.033	0.777	0.732	0.811	ND
Gorontalo Utara	ILSTS017	23	4	2.574	0.553	0.696	0.625	ND
	HEL013	23	3	2.266	0.489	0.304	0.571	ND
	BM1818	23	9	5.290	0.785	0.783	0.829	ND

Note: N=number of sample; Na= Number of alleles; Nc= Mean number of effective alleles; Ho= observed heterozygosity; He= expected heterozygosity; PIC= polymorphism information content; HW= Hardy-Weinberg Equilibrium.

Table 5: Number of alleles (Na), observed heterozygosity (Ho), and expected (He), and polymorphism information content in five cattle breeds observed.

Breed	N	Na±SD	Ne±SD	Ho±SD	He±SD	PIC
A	6	4.67±0.88	3.563±0.923	0.611±0.222	0.671±0.096	0.627
B	3	3.00±0.58	2.657±0.521	0.667±0.333	0.593±0.081	0.518
C	22	6.68±1.33	3.286±0.634	0.471±0.084	0.674±0.056	0.631
D	41	7.00±1.16	3.759±0.682	0.524±0.111	0.716±0.050	0.674
E	23	5.33±1.86	3.377±0.961	0.594±0.147	0.660±0.077	0.609

Note: A= Bali cattle; B= PO cattle; C= Bolongo; D= Gorontalo; E= North Gorontalo; N= number of sample; Na= Number of alleles; Ne= Mean number of effective alleles; Ho= observed heterozygosity; He= expected heterozygosity; PIC= polymorphism information content; SD= standart deviation.

The genetic diversity belonging to each population was shown in Table 5. EH ranged from 0.407±0.216 (Bali) to 0.716±0.050 (Gorontalo), whereas OH ranged from 0.471±0.084 (Bonebolango) to 0.778±0.222 (PO). The EH value was higher than OH in all populations except in the PO and Bali populations.

Expected heterozygosity in all loci showed a higher value than observed heterozygosity, indicating that all loci deviated from HWE. The deviation of loci from HWE can be caused by several factors, such as selection, genetic drift, inbreeding, the presence of null alleles, selection in favor of homozygotes, and the Wahlund effect (Rahal et al., 2021). The EH value was lower compared to Algerian cattle (Rahal et al., 2021), but higher than the previous study in Indonesian cattle (Sutarno et al., 2015). The highest level of heterozygosity was in locus BM1818, which was higher than previous research in Red Steppe cattle using BM1818 loci, which obtained heterozygosity values of 0.692 (OH) and 0.701 (EH) (Kramarenko et al., 2018). The highest heterozygosity in the Gorontalo population (0.716±0.050) could be explained by the lack of a breeding program. The EH > OH value indicates low heterozygosity. Smith and Wang (2014) states that heterozygosity influenced by the variety of alleles and the frequency of each allele at each locus. Heterozygosity values range from 0 to 1. If heterozygosity equals 0 (zero), then the population being measured has a very close genetic relationship, and if the value is equal to 1 (one), then the population being measured has no genetic relationship.

The F-statistics consisting of F_{IS} , F_{ST} , and F_{IT} were 0.038, 0.248, and 0.231, respectively. All microsatellite loci were deviated from the Hardy-Weinberg Equilibrium (HWE), meanwhile for all loci in each population, only locus ILSTS and HEL013 Gorontalo cattle showed the deviation from HWE. The presence of null alleles in the study was between 6.15% (BM1818) and 24.01% (HEL013). The F_{ST} value of 23.1% indicated that 23.1% of the total genetic variation was due to allele differentiation between breeds, while the remaining 76.9% was due to the difference among individuals within the breed across the 3 markers. The average F_{ST} value of 0.231 indicated that the genetic

difference in the population was high (0.15–0.25). Hartl and Clark (2007) state that the F_{ST} value of 0–0.05 (small), 0.05–0.15 (medium), 0.15–0.25 (high), and > 0.25 (very high). Obtained F_{ST} values were higher than Egyptian cattle (El-Sayeed et al., 2016), Algerian cattle (Rahal et al., 2021), South African Nguni cattle (Sanarana et al., 2016), and cattle raised in Turkey (Demir and Balcioglu, 2019), but these values were lower compared to previous research in Indonesian cattle (Agung et al., 2019). The F_{IS} values were 0.412, 0.067, and -0.017 for ILSTS017, HEL013, and BM1818, respectively. The obtained F_{IS} value was used to gain a better understanding of the degree of inbreeding and endangered potentiality. A F_{IS} value less than 0.05 means the breeds are not in danger, 0.05–0.15 means the breeds are potentially endangered, 0.15–0.25 means the breeds are minimally endangered, 0.25–0.40 means the breeds are endangered, and >0.40 means the breeds are critically endangered (Simon and Bchenauer, 1993; El-Sayeed et al., 2016).

PIC values were found to be polymorphic between 0.601 (HEL013) and 0.803 (BM1818). The PIC value based on each population ranged from 0.353 to 0.674, which indicated a moderately to highly informative value. In the present study, the PIC values of three markers were highly informative (> 0.5), whereas the PIC values for ILSTS017 loci in the Bali and PO populations had low informative values (0.25–0.5). The PIC values in previous research on Egyptian cattle were 0.45 and 0.64 (El-Sayeed et al., 2016); those of Taro White cattle were 0.536 (Heryani et al., 2019); those of Zimbabwean Sanga cattle were 0.666–0.682 (Gororo et al., 2018); and those of Eastern European cattle were 0.752 (Illie et al., 2015). The PIC result showed that the markers are highly informative for the characterization of the three populations used in the study, i.e., the Bonebolango, Gorontalo, and North Gorontalo populations. The PIC value for identifying genetic diversity should be greater than 0.5.

GENETIC STRUCTURE AND RELATIONSHIPS

The result of genetic distance was used as basic data to create the visualization of a phylogeny tree (Table 6), which revealed the closest genetic distance between

Gorontalo-Bonebolango (0.037), followed by Gorontalo – North Gorontalo (0.043) and Bonebolango-North Gorontalo (0.078), respectively, while the farthest genetic distance was between Bali – PO (2.109). Estimation of the pair-wise F_{ST} value revealed the highest genetic differentiation between PO and Bali (0.206) and the lowest genetic differentiation between Bonebolango-North Gorontalo (0.011), Gorontalo-North Gorontalo (0.012), Bonebolango-Gorontalo (0.013), and PO-North Gorontalo (0.029). Low genetic differentiation indicated high genetic similarity between populations.

Table 6: Population pair-wise F_{ST} (bottom diagonal) and Nei's standard genetic distance (top diagonal).

Populasi	Bali	PO	Bolon-go	Goronta-lo	Gorontalo Utara
Bali	***	0.053	0.959	0.714	0.807
PO	0.015	***	1.233	0.931	1.030
Bolongo	0.134	0.174	***	0.037	0.078
Gorontalo	0.104	0.142	0.008	***	0.043
Gorontalo Utara	0.128	0.166	0.017	0.010	***

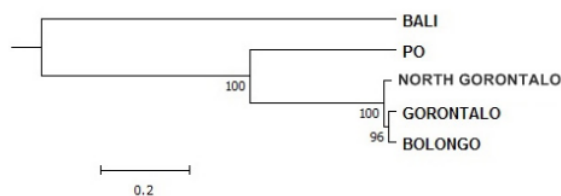


Figure 1: The reconstruction of the UPGMA phylogeny tree of Gorontalo cattle populations with Nei genetic distance.

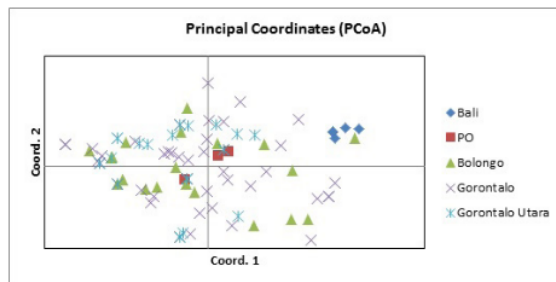


Figure 2: Principal coordinate analysis (PCoA) based on 3 microsatellite loci from 95 individual cattle in Indonesia. Bali= ◆; PO= ■; Bolongo= ▲; Gorontalo= ×; Gorontalo Utara= *.

Genetic distance analysis shows that the genetic distance between populations ranged from 0.037 to 2.109, while the pair-wise F_{ST} value ranged from 0.011 to 0.206. The reconstruction of the phylogeny tree based on Nei's genetic distance is shown in Figure 1. The figure revealed two main clusters of cattle populations. The first cluster consisted

of Bali cattle, and the second cluster consisted of PO cattle. Clusters of PO population were divided into two subpopulations, i.e., the North Gorontalo population and the Bonebolango-Gorontalo population. The principal coordinate analysis (PCoA) result (Figure 2) supported the visualization of the phylogeny tree. It is shown that Bali cattle clearly separate from other cattle, while the population of PO cattle forms a cluster that contains local cattle in three different populations as subpopulations.

The reconstruction of a phylogeny tree using five cattle populations revealed a high gene share between Gorontalo and Bonebolango. The PCoA analysis confirmed (Figure 3) that Bali populations are distinct from other populations studied, whereas Gorontalo-Bonebolango admixture and North Gorontalo were mixed with the PO population. This is due to the distribution pattern of the arrival of cattle to Gorontalo province, which starts from North Gorontalo, and then the incoming cattle will be selected. After that, the cattle will be distributed to other areas, such as Gorontalo and Bonebolango. Cattle that entered North Sulawesi province (before Gorontalo province separated from North Sulawesi province) were dominated by PO cattle. Then, in 2000 (UU No. 38 of 2000), when Gorontalo officially became a separate province from North Sulawesi, the province of Gorontalo was dominated by Bali cattle. This distribution pattern allows for differences between the cattle populations in North Gorontalo and other areas. The similarity in cattle between the populations of Gorontalo and Bonebolango can be due to the fact that the two regions are close together, which allows for inbreeding between livestock and causes the appearance of the same genetics.

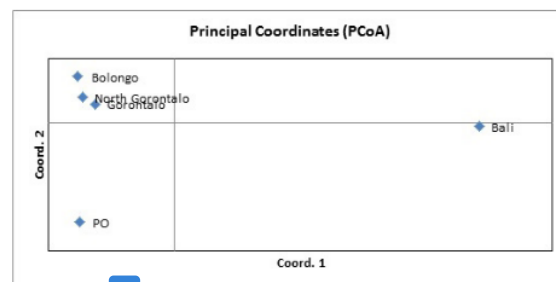


Figure 3: Principal coordinate analysis (PCoA) based on each population.

The populations of Bali and PO cattle form a different cluster. This is because Bali and PO cattle are different species; Bali cattle are included in *Bos sondaicus*, while PO cattle are in *Bos indicus*. The existence of PO cattle for more than two decades can cause a high share of genetic pool between PO cattle and local cattle in Gorontalo province. Samples of cattle in the populations of North Gorontalo, Gorontalo, and Bonebolango are local cattle in each of these

regions. The phenotypic appearance of the three cattle in the area has a dominant mixture of PO phenotype, a little Bali phenotype, and both cattle's phenotypes (Suyadi et al., 2014; Laya et al., 2020; Domili et al., 2021; Gobel et al., 2021). However, they are not said to be PO and Bali cattle (Figures 4, 5, and 6), but local cattle for each region. The study could serve as guidelines for future genetic studies on the development and maintenance of local cattle in Gorontalo Province, Indonesia.



Figure 4: Local cattle population of Gorontalo Regency.



Figure 5: Local cattle population of North Gorontalo.



Figure 6: Local cattle of the Bonebolango population.

CONCLUSIONS AND RECOMMENDATIONS

Three markers used were highly informative and polymorphic in investigating genetic diversity in three cattle populations in Gorontalo Province, i.e., Bonebolango, Gorontalo, and North Gorontalo. There are two main clusters: (1) Bali cattle, which are distinct from all other cattle populations; and (2) the PO population, which includes the North Gorontalo, Bonebolango, and Gorontalo subpopulations and closely reflects the breeding process state in the research area. This information will be useful for the future development and maintenance of local cattle in Gorontalo Province, Indonesia, and it is recommended to standardize local Gorontalo cattle as typical local Gorontalo cattle.

ACKNOWLEDGEMENTS

The authors thank the team of Department of Animal Husbandry, Faculty of Agriculture, Gorontalo University for supporting the data and the members of the Genomic and Proteomic Research Group, Faculty of Animal Science, Universitas Brawijaya for data analysis.

NOVELTY STATEMENT

1. Gorontalo cattle come from PO and Bali cattle which have been raised by the community for a long time.
2. Gorontalo local cattle are a new cluster resulting from a decrease in the genetic quality of PO and Bali cattle.

AUTHOR'S CONTRIBUTION

SD, SS, VMAN and GC idea and design. SD, NKL, SIG, AA and DW material sample collection and lab analysis. DW, SD and NKL write the manuscript. SD and SS: Revision.

CONFLICT OF INTEREST

The authors have declared no conflict of interest.

REFERENCES

- Abdullah MAN (2008). Karakterisasi genetik sapi Aceh menggunakan analisis keragaman fenotipik, daerah DLoop DNA mitokondria dan DNA mikrosatelit. Bogor Agriculture Institute, Bogor, Indonesia.
- Agung PP, Saputra F, Septian WA, Zein MSA, Sulandari S, Anwar S, Tappa B (2015). Study of genetic diversity among Simmental cross cattle in West Sumatra based on microsatellite markers. Asian-Aust. J. Anim. Sci., 29(2): 176-183. <https://doi.org/10.5713/ajas.15.0155>
- Agung PP, Saputra F, Zein MSA, Wulandari AS, Putra WPB,

- Said S, Jakaria J (2019). Genetic diversity of Indonesian cattle breeds based on microsatellite markers. *Asian Aust. J. Anim. Sci.*, 32(4): 467. <https://doi.org/10.5713/ajas.18.0283>
- Badan Pusat Statistik (2020). *Populasi Sapi Potong menurut Provinsi (Ekor) 2019-2021*. Jakarta: BPS RI.
- Chaudhari MV, Parmar SNS, Joshi CG, Bhong CD, Fatima S, Thakur MS, Thakur SS (2009). Molecular characterization of Kenkatha and Gaolao (*Bos indicus*) cattle breeds using microsatellite markers. *Anim. Biodiv. Conserv.*, 32: 71-78. <https://www.raco.cat/index.php/ABC/article/view/144327>. <https://doi.org/10.32800/abc.2009.32.0071>
- Demir E, Balcioglu MS (2019). Genetic diversity and population structure of four cattle breeds raised in Turkey using microsatellite markers. *Czech J. Anim. Sci.*, 64(10): 411-419. <https://doi.org/10.17221/62/2019-CJAS>
- Domili A, Laya NK, Dako S, Datau F, Fathan S (2021). Tampilan Kualitatif Dan Analisis Korelasi Ukuran Tubuh Sapi Bali Jantan. *Jambura J. Anim. Sci.*, 4(1): 46-52. <https://doi.org/10.35900/jjas.v4i1.11536>
- El-Sayed MA, Al-Soudy A, Teleb DF (2016). Assessment of genetic diversity among two Egyptian cattle populations (*Bos taurus*) based on autosomal microsatellite markers. *Egypt. J. Anim. Prod.*, 53(2): 65-73. https://journals.ekb.eg/article_93310_4ca3bc6030c15d26bbf2a457d960f10c.pdf. <https://doi.org/10.21608/egap.2016.93310>
- Gobel Z, Dako S, Laya NK (2021). Sifat Kualitatif Dan Kuantitatif Sapi Bali Betina. *Jambura J. Anim. Sci.*, 4(1): 66-72. <https://doi.org/10.35900/jjas.v4i1.11676>
- Gororo E, Makuza SM, Chatiza FP, Chidzwindo F, Sanyika TW (2018). Genetic diversity in Zimbabwean Sanga cattle breeds using microsatellite markers. *S. Afr. J. Anim. Sci.*, 48(1): 128-141. <https://doi.org/10.4314/sajas.v48i1.15>
- Government of Indonesia (2000). Law No. 38 of 2000 concerning the Establishment of the Gorontalo Province. State Secretariat of the Republic of Indonesia, Jakarta.
- Hard DL, Clark AG (2007). *Principles of population genetics*. Sinauer Associates. Sunderland, USA.
- Heryani LGSS, Wandia IN, Suarna IW, Puja IK, Susari NNW, Agustina KK (2019). Molecular characteristic of taro white cattle based on DNA microsatellite markers. *Biodiv. J. Biol. Divers.*, 20(3): 671-675. <https://doi.org/10.13057/biodiv/d200308>
- Iham F, Dako S, Rahim L, Rachman YAB, Dagong MIA (2016). Genetic polymorphisms of growth hormone (GH) gene in kacang goat population based on polymerase chain reaction-restriction fragment length polymorphism (PCR-RFLP) identification. *Livest. Res. Rural Dev.*, 28(9).
- Ilie DE, Cean A, Csiszter LT, Gavojdian D, Ivan A, Kusza S (2015). Microsatellite and mitochondrial DNA study of native eastern European cattle populations: The case of the Romanian Grey. *PLoS One*, 10(9): e0138736. <https://doi.org/10.1371/journal.pone.0138736>
- Karthickeyan SMK, Sivaselvam SN, Selvam R, Thangeraju P (2009). Microsatellite analysis of Kangayam cattle (*Bos indicus*). *Ind. J. Sci. Technol.*, 2: 38-40. <https://sciresol.s3.us-east-2.amazonaws.com/IJST/Articles/2009/Issue-10/Article10.pdf>. <https://doi.org/10.17485/ijst/2009/v2i10.11>
- Kramarenko AS, Gladyr EA, Kramarenko SS, Pidpala TV, Strikha LA, Zinovieva NA (2018). Genetic diversity and bottleneck analysis of the Red Steppe cattle based on microsatellite markers. *Ukrainian J. Ecol.*, 8(2): 12-17.
- Laya NK, Ibrahim D, Dako S, Datau F (2020). Analysis of the size and body weight characteristic of Ongole cattle that are kept with intensive and semi-intensive system. *J. Seybold Rep.*, 15(8): 2737-2747.
- Metta M, Kanginakudru S, Gudiseva N, Nagaraju J (2004). Genetic characterization of the Indian cattle breeds, Ongole and Deoni (*Bos Indicus*), using microsatellite markers a preliminary study. *BMC Genet.*, 5(16). <https://doi.org/10.1186/1471-2156-5-16>
- Mueller ML, Van Eenennaam AL (2022). Synergistic power of genomic selection, assisted reproductive technologies, and gene editing to drive genetic improvement of cattle. *CABI Agric. Biosci.*, 3(1): 1-29. <https://doi.org/10.1186/s43170-022-00080-z>
- Muladno (1994). DNA Marker for pig gene mapping. A thesis submitted to Faculty of Agriculture in fulfilment of the requirements for the degree of Doctor of Philosophy. The University of Sidney, Australia. pp. 201.
- Naskar S, Gowane GR, Chopra A, Paswan C, Prince LLL (2012). Genetic adaptability of livestock to environmental stresses. In: *Environmental stress and amelioration in livestock production*. Springer, Berlin, Heidelberg. pp. 317-378. https://doi.org/10.1007/978-3-642-29205-7_13
- Pribadi LW, Maylinda S, Nasich M, Suyadi S (2015). Reproductive efficiency of Bali cattle and its crosses with Simmental breed in the lowland and highland areas of West Nusa Tenggara Province, Indonesia. *Livest. Res. Rural Dev.*, 27(28). <http://www.lrrd.cipav.org.co/lrrd27/2/prib27028.htm>
- Rahal O, Aissaoui C, Ata N, Yilmaz O, Cemal I, Ameur AA, Gaouar SBS (2021). Genetic characterization of four Algerian cattle breeds using microsatellite markers. *Anim. Biotechnol.*, 32(6): 699-707. <https://doi.org/10.1080/10495398.2020.1746321>
- Rincon AMS, Montiel HP, Bracamonte GMP (2007). Assessment of genetic structure in Mexican charolais herds using microsatellite markers. *Mol. Biol. Genet.*, 10: 1-7. <https://doi.org/10.2225/vol10-issue4-fulltext-12>
- Sanarana Y, Visser C, Bosman L, Nephawe K, Maiwashe A, van Marle-Köster E (2016). Genetic diversity in South African Nguni cattle ecotypes based on microsatellite markers. *Trop. Anim. Health Prod.*, 48(2): 379-385. <https://doi.org/10.1007/s11250-015-0962-9>
- Sarbaini (2004). *Kajian keragaman karakteristik eksternal dan DNA mikrosatelit sapi pesisir Sumatra Barat*. Disertasi. Bogor Agriculture Institute, Bogor. Indonesia.
- Satriani N, Farajallah A, Muladno (2002). Keragaman genetic sapi Peranakan Ongole (PO) berdasarkan uji DNA mikrosatelit. *Media Petern.*, 25: 84-91. <https://repository.ipb.ac.id/handle/123456789/26136>
- Septian WA, Sumantri C (2015). Genetic diversity of Bali Cattle based on microsatellite marker in Indonesian breeding center. *Med. Petern.*, 38: 12-17. <https://doi.org/10.5398/medpet.2015.38.1.12>
- Simon DL, Buchenauer D (1993). Genetic diversity of European livestock breeds. Results of Monitoring by the EAAP Working Group on Animal Genetic Resources; EAAP Animal Genetic Data Bank, Institute of Animal Breeding and Genetics, School of Veterinary Medicine, Hannover, EAAP Publication, No. 66, Wageningen Pers, Wageningen, pp. 591.
- Smith O, Wang J. (2014). When can noninvasive samples provide sufficient information in conservation genetics studies?. *Molecular Ecology Resources*, 2014; 14(5), 1011-1023. <https://doi.org/10.1111/1755-0998.12250>

- Sun W, Chen H, Lei C, Lei X, Zhang Y (2008). Genetic variation in eight Chinese cattle breeds based on the analysis of microsatellite markers. *Genet. Sel. Evol.*, 40: 681-692. <https://doi.org/10.1186/1297-9686-40-6-681>
- Susilorini TE, Furqon A, Septian WA, Wulandari D, Suyadi S (2022). Polymorphism of kappa-casein gene (CSN3|Alw44I) and its effect on milk yield and compositions in indigenous senduro goat. *Adv. Anim. Vet. Sci.*, 10(6): 1333-1338. <https://doi.org/10.17582/journal.aavs/2022/10.6.1333.1338>
- Sutarno, Setyawan AD, Lymbery AJ (2015). Genetic diversity of five Indonesian native cattle breeds at microsatellite loci. *Asian J. Anim. Sci.*, 9(2): 57-64. <https://doi.org/10.3923/ajas.2015.57.64>
- Suyadi S, Hakim L, Wahjuningsih S, Nugroho H (2014). Reproductive performance of Peranakan Ongole (PO)- and Limousin× PO crossbred (Limpo) cattle at different altitude areas in East Java, Indonesia. *J. Appl. Sci. Agric.*, 9(11 Special): 81-85.
- Takezaki N, Nei M, Tamura K (2014). POPTREEW: Web version of POPTREE for constructing population trees from allele frequency data and computing some other quantities. *Mol. Biol. Evol.*, 31: 1622-1624. <https://doi.org/10.1093/molbev/msu093>
- Winaya A, Muladno, Tappa B (2007). Panel 16 lokus mikrosatelit untuk deteksi polimorfisme dan hubungan filogenetik pada genom sapi. *Media Petern.*, 24: 81-88. <https://repository.ipb.ac.id/handle/123456789/26078>.

Genetic Diversity of Gorontalo Local Cattle Based on Microsatellite DNA

ORIGINALITY REPORT

14%
SIMILARITY INDEX

10%
INTERNET SOURCES

11%
PUBLICATIONS

2%
STUDENT PAPERS

PRIMARY SOURCES

1 Mian Wang, Cong'an Xu, Yun Lin, Zhiyi Lu, Jinlong Sun, Guan Gui. "A Distributed Sensor System Based on Cloud-Edge-End Network for Industrial Internet of Things", Future Internet, 2023
Publication 1%

2 nanopdf.com
Internet Source 1%

3 webpac.lib.unideb.hu:8082
Internet Source 1%

4 www.jstage.jst.go.jp
Internet Source 1%

5 www.science.gov
Internet Source 1%

6 cabiagbio.biomedcentral.com
Internet Source 1%

7 www2.palomar.edu
Internet Source 1%

8

assets.researchsquare.com

Internet Source

1 %

9

Komal Shyamakant Pasi, W. S. Lakra, J. P. Bhatt, M. Goswami, A. Kr. Malakar. "Population structure of inferred from mitochondrial gene cytochrome ", Mitochondrial DNA, 2013

Publication

<1 %

10

"WAAP book of the year - 2005", Wageningen Academic Publishers, 2005

Publication

<1 %

11

Rekha Sharma, Avishek Maitra, Pramod Kumar Singh, Madhu Sudan Tantia. "Genetic diversity and relationship of cattle populations of East India: distinguishing lesser known cattle populations and established breeds based on STR markers", SpringerPlus, 2013

Publication

<1 %

12

www.lrrd.org

Internet Source

<1 %

13

A. K. Pandey. "Genetic diversity studies of Kherigarh cattle based on microsatellite markers", Journal of Genetics, 08/2006

Publication

<1 %

14

acikbilim.yok.gov.tr

Internet Source

<1 %

15	journal.unhas.ac.id Internet Source	<1 %
16	ternaktropika.ub.ac.id Internet Source	<1 %
17	Suyadi, T E Susilorini. "Conception Rate of 11 Months Old Dairy Heifer Following Artificial Insemination with Natural Estrus and PGF2α Treatment", IOP Conference Series: Earth and Environmental Science, 2019 Publication	<1 %
18	Baldomero Molina Flores, María Esperanza Camacho Vallejo, Juan Vicente Delgado Bermejo, Francisco Javier Navas González et al. "Do Pharaohs' cattle still graze the Nile Valley? Genetic characterization of the Egyptian Baladi cattle breed", Animal Biotechnology, 2021 Publication	<1 %
19	F Jaya, I Thohari, Kuswati, T E Susilorini, D R Asmara. "Microbiological properties of preparing facial mask cream from goat milk kefir", IOP Conference Series: Earth and Environmental Science, 2019 Publication	<1 %
20	Navarro-Martin, L.. "Balancing the effects of rearing at low temperature during early development on sex ratios, growth and	<1 %

maturation in the European sea bass
(Dicentrarchus labrax).", Aquaculture,
20091116

Publication

21

acta.fapz.uniag.sk

Internet Source

<1 %

22

dspace.akdeniz.edu.tr

Internet Source

<1 %

23

dspace.uok.edu.in

Internet Source

<1 %

24

research-repository.griffith.edu.au

Internet Source

<1 %

25

www.ijsr.in

Internet Source

<1 %

26

Deva Cahyasari, Ali Husni, Liman Liman, Arif Qisthon. "PERBANDINGAN KUALITAS KIMIA DAGING SAPI BRAHMAN CROSS DARI FEEDLOTTER DAN PETERNAKAN RAKYAT DI WILAYAH LAMPUNG", Jurnal Riset dan Inovasi Peternakan (Journal of Research and Innovation of Animals), 2022

Publication

<1 %

27

Farah Nuriessa Aputri, Laila Hanum, Rahmat Pratama, Yuanita Windusari. "Analysis of Mosquito Genetic with PCR-RAPD Approach", 2021 IEEE International Conference on Health,

<1 %

Instrumentation & Measurement, and Natural Sciences (InHeNce), 2021

Publication

28

Richard OSEI-AMPONSAH. "Genetic diversity of Forest and Savannah chicken populations of Ghana as estimated by microsatellite markers : GENETIC DIVERSITY OF GHANAIAN CHICKENS", Animal Science Journal, 05/12/2010

Publication

<1 %

29

www.agrojournal.org

Internet Source

<1 %

30

Climate Change Impact on Livestock Adaptation and Mitigation, 2015.

Publication

<1 %

31

Karan Veer Singh, Ramendra Das, Monika Sodhi, R. S. Kataria. "Genetic characterization and diversity assessment in 'Bhangor' indigenous swamp buffalo population using heterologous microsatellite markers", Animal Biotechnology, 2022

Publication

<1 %

32

Muralidhar Metta. Genome Biology, 2004

Publication

<1 %

33

journals.sagepub.com

Internet Source

<1 %

noa.gwlb.de

34

Internet Source

<1 %

35

ojs.uho.ac.id

Internet Source

<1 %

36

umu.diva-portal.org

Internet Source

<1 %

37

Widi Nugroho, Siska Aditya, Rahadi Swastomo, Aulanni'am Aulanni'am. "Productivity, absence of a bull and endoparasitic nematodiosis in beef cattle farms in an upland area of East Java, Indonesia", Veterinary World, 2020

Publication

<1 %

38

Alzira Regina Silva de Deus, Geice Ribeiro Silva, Luciano Silva Sena, Fábio Barros Britto et al. "Comparison of kinship estimates in Santa Inês sheep using microsatellite and genome-wide SNP markers", Small Ruminant Research, 2021

Publication

<1 %

Exclude quotes On

Exclude bibliography On

Exclude matches Off