

# **2nd Annual Applied Science and Engineering Conference (AASEC 2017)**

IOP Conference Series: Materials Science and Engineering  
Volume 288

Bandung, Indonesia  
24 August 2017

Part 1 of 2

## **Editors:**

**Ade Gafar Abdullah  
Asep Bayu Dani Nandiyanto  
Isma Widiaty**

ISBN: 978-1-5108-5687-5  
ISSN: 1757-8981

**Printed from e-media with permission by:**

Curran Associates, Inc.  
57 Morehouse Lane  
Red Hook, NY 12571



**Some format issues inherent in the e-media version may also appear in this print version.**

Copyright© (2017) by the Institute of Physics  
All rights reserved. The material featured in this book is subject to  
IOP copyright protection, unless otherwise indicated.

Printed by Curran Associates, Inc. (2018)

For permission requests, please contact the Institute of Physics  
at the address below.

Institute of Physics  
Dirac House, Temple Back  
Bristol BS1 6BE UK

Phone: 44 1 17 929 7481  
Fax: 44 1 17 920 0979

[techtracking@iop.org](mailto:techtracking@iop.org)

**Additional copies of this publication are available from:**

Curran Associates, Inc.  
57 Morehouse Lane  
Red Hook, NY 12571 USA  
Phone: 845-758-0400  
Fax: 845-758-2633  
Email: [curran@proceedings.com](mailto:curran@proceedings.com)  
Web: [www.proceedings.com](http://www.proceedings.com)

# TABLE OF CONTENTS

## PART 1

<b>GREEN CHEMISTRY PRINCIPLES: AN ALTERNATIVE APPROACH TO PRACTICE LABORATORY SAFETY AND HEALTH</b> .....	1
<i>A S Wahyuningsih, M T Multazam, A B D Nandiyanto, A G Abdullah, I Widiaty</i>	
<b>BIOACTIVITY OF ACETONE EXTRACT FROM SPIRULINA PLATENSIS</b> .....	6
<i>A D Djalil, Y Nurmareta, U Pribadi, W S Rahayu, P I Utami, Suwandri</i>	
<b>THE EFFORT TO ENHANCE STUDENTS' MATHEMATICS LEARNING OUTCOME IN THE TOPIC OF FRACTION ADDITION BY USING DRAWING MEDIA</b> .....	11
<i>D G Asep, K Sobariah</i>	
<b>ANALYSIS OF BUS STATION SERVICES WITH IMPORTANCE-PERFORMANCE ANALYSIS: EMPIRICAL RESULTS OF GERBANGKERTOSUSILA REGION</b> .....	15
<i>A D Witjaksono, Suyatno, Soeparno</i>	
<b>IMPROVEMENT VALUE OF URBAN KAMPONG BASED ON COMMUNITY POTENTIAL IN AN ARCHITECTURAL PERSPECTIVE STUDY</b> .....	21
<i>A F Prajawisastro, D Hamid Z, L Yosita</i>	
<b>ON THE DESIGN OF ARRAY MICROSTRIP ANTENNA WITH S-BAND FREQUENCY FOR RADAR COMMUNICATION</b> .....	28
<i>A Faroqi, F Zaelani, R Kariadinata, M A Ramdhani</i>	
<b>DESIGN OF MODERATOR NEUTRON FOR BORON NEUTRON CAPTURE THERAPY IN KARTINI NUCLEAR REACTOR USING MONTE CARLO N PARTICLE 5 SIMULATION</b> .....	35
<i>D Wahyuningsih, A Jufriadi, H D Ayu, M I Muslih</i>	
<b>CHEMOPREVENTIVE ACTIVITY OF KOLA (COLA ACCUMINATA) SEED ETHANOL EXTRACT IN MICE INDUCED BY CYCLOPHOSPHAMIDE</b> .....	46
<i>I Nugraha, A N Annisa, A T Wibowo, A M Kusuma</i>	
<b>FAULT DIAGNOSIS FOR DISTRIBUTION FEEDER BASE ON FUZZY LOGIC</b> .....	51
<i>A Nugroho, Y Mulyadi, A G Abdullah, A B D Nandiyanto</i>	
<b>DESIGN OF HYBRID POWER SYSTEM FOR REMOTE AREA</b> .....	61
<i>A R Syarifah, A G Abdullah, D L Hakim, A B D Nandiyanto</i>	
<b>EXPERT SYSTEM FOR DECIDING A SOLUTION OF MECHANICAL FAILURE IN A CAR USING CASE-BASED REASONING</b> .....	70
<i>A Rahman, C Slamet, W Darmalaksana, Y A Gerhana, M A Ramdhani</i>	
<b>SEVENTH GRADE STUDENTS' SCIENTIFIC CREATIVITY TEST: A PRELIMINARY-STUDY ON EARTH SCIENCE CONTEXT</b> .....	76
<i>A Samsudin, A H Setyadin, E Suhendi, D T Chandra, P Sahaan</i>	
<b>TENSILE STRENGTH IMPROVEMENT OF LLBC MATERIAL FOR LOW SPEED WIND TURBINE ROTOR BLADE BY VARYING COMPOSITE MATRIX</b> .....	80
<i>A Setiawan, M M Al Gifari, R H Putra</i>	
<b>EVODIA SUAVOLENSE'S REPELLENT ACTION AGAINST AEDES AEGYPTI FROM ENTERING A ROOM</b> .....	84
<i>A Sulianti, M A Ramdhani</i>	
<b>DHIKR TO MANAGE EPILEPTIFORM ACTIVITY IN A TEENAGER WITH DEPRESSIVE DISORDER</b> .....	89
<i>A Sulianti, Y Yulianti, R Riswanda, A D Amalia, R Anwar</i>	
<b>BIOPSYCHOLOGICAL APPROACH ON HEARING IMPAIRMENT CAUSED BY INSTRUMENTAL HEARING HABIT</b> .....	95
<i>A Sulianti, N Darojah, N G Rosalina, B N Wahid, M A Ramdhani</i>	
<b>CYBERWELLNESS LEARNING RESOURCES (CLR) ACCESS CONTENT FILTER AS DANGEROUS AND LEARNING NETWORK ON THE INTERNET</b> .....	101
<i>A Sumarno, S C Wibawa</i>	
<b>DESIGN OF SMART SYSTEM TO DETECT RIPENESS OF TOMATO AND CHILI WITH NEW APPROACH IN DATA ACQUISITION</b> .....	107
<i>A Taofik, N Ismail, Y A Gerhana, K Komarujaman, M A Ramdhani</i>	
<b>COMPARISON STUDY OF CLASS F AND CLASS C FLY ASHES AS CEMENT REPLACEMENT MATERIAL ON STRENGTH DEVELOPMENT OF NON-CEMENT MORTAR</b> .....	113
<i>A Wardhono</i>	

<b>PHYSICAL FITNESS DEVELOPMENT REGARDING MAXIMUM PULSE RATE: A CASE OF INDONESIAN ADOLESCENTS .....</b>	<b>119</b>
<i>A Wijaya, A Amrulloh</i>	
<b>POTENTIAL IMPROVEMENT OF CIHIDEUNG VILLAGE THROUGH LAYOUT MODIFICATION OF LOCAL HOUSING AND SETTLEMENT .....</b>	<b>123</b>
<i>A William, I Setiawan, L Yosita</i>	
<b>CLASSIFICATION OF GAMELAN TONES BASED ON FRACTAL ANALYSIS .....</b>	<b>130</b>
<i>A Wintarti, D Juniati, I N Wulandari</i>	
<b>ECONOMIC EVALUATION OF THE PRODUCTION ETHANOL FROM CASSAVA ROOTS.....</b>	<b>135</b>
<i>A B D Nandiyanto, A C Maulana, R Ragadhita, A G Abdullah</i>	
<b>FEASIBILITY STUDY ON THE PRODUCTION OF BIOGAS IN DAIRY FARMING .....</b>	<b>141</b>
<i>A B D Nandiyanto, R Ragadhita, A C Maulana, A G Abdullah</i>	
<b>ECONOMIC PERSPECTIVE IN THE PRODUCTION OF PRESERVED SOYBEAN (TAUCO) WITH VARIOUS RAW MATERIAL QUANTITIES .....</b>	<b>147</b>
<i>A B D Nandiyanto, R Ismiati, J Indrianti, A G Abdullah</i>	
<b>ECONOMIC ANALYSIS OF THE CONVENTIONAL PRODUCTION OF TRADITIONAL BREM FOOD .....</b>	<b>153</b>
<i>A B D Nandiyanto, J Indrianti, R Ismiati, A G Abdullah</i>	
<b>HOT LAB-BASED PRACTICUM GUIDE FOR PRE-SERVICE PHYSICS TEACHERS .....</b>	<b>159</b>
<i>A Malik, A Setiawan, A Suhandi, A Permanasari, S Sulasman</i>	
<b>DESIGN CONTROL SYSTEMS TO DETECT APPLIED GREASE MACHINE BASED ON PROGRAMMABLE LOGIC CONTROLLER IN MANUFACTURING INDUSTRY .....</b>	<b>166</b>
<i>A Ponco, A Palito F, S Ardi</i>	
<b>WORK ROTATION TO REDUCE THE EFFECT OF NOISE EXPOSURE FOR OPERATORS IN SUGAR FACTORY.....</b>	<b>174</b>
<i>Anizar, Erwin, R M Sari, K Syahputri, I Rizky</i>	
<b>BUILDING CHARACTER THROUGH SCIENCE LEARNING WITH SCIENTIFIC LITERACY BASED.....</b>	<b>180</b>
<i>B Rubini, A Permanasari, I Permana</i>	
<b>STABILIZATION OF OUTPUT VOLTAGE WITH FEEDBACK CIRCUIT AND FILTER ON 2 STAGES-STEP UP CONVERTER (24V TO 312V DC) .....</b>	<b>185</b>
<i>B Budiman, N Ismail, A Risdiyanto, B Susanto, M A Ramdhani</i>	
<b>WIRELESS SENSOR NETWORK BASED ATMEGA16 MICROCONTROLLER AS TEMPERATURE AND CURRENT MONITORING SYSTEM ON DISTRIBUTION NETWORK TRANSFORMATOR.....</b>	<b>191</b>
<i>B Suprianto, S Nidzom</i>	
<b>ADDITIONAL HALOGEN GROUP (F, CL, AND BR) TO 2-PHENYL- IMIDAZOLE[1,2A]PYRIDINE ON CORROSION INHIBITION PROPERTIES: A COMPUTATIONAL STUDY.....</b>	<b>199</b>
<i>C D D Sundari, S Setiadji, M A Ramdhani, A L Ivansyah, N I T Widhiasari</i>	
<b>GROWTH AND YIELD OF CHILI IN NUTRIENT FILM TECHNIQUE AT DIFFERENT ELECTRICAL CONDUCTIVITY .....</b>	<b>204</b>
<i>C Hidayat, M R Pahlevi, B F Taufiqqurahman, M A Ramdhani</i>	
<b>THE ANALYSIS OF TOTAL SOLAR ECLIPSE PICTURES ON AUGUST 21, 2017 AT WYOMING, USA .....</b>	<b>208</b>
<i>C P Asmoro, A R Achmad, A F C Wijaya, N D Ardi, S H Budisulistiorini</i>	
<b>BASIC PHYSICS CONCEPTS OF NEW RENEWABLE ENERGIES .....</b>	<b>211</b>
<i>C Rochman, D Nasrudin, Sulasman</i>	
<b>AUTOMATED TEXT SUMMARIZATION FOR INDONESIAN ARTICLE USING VECTOR SPACE MODEL .....</b>	<b>217</b>
<i>C Slamet, A R Atmadja, D S Maylawati, R S Lestari, W Darmalaksana, M A Ramdhani</i>	
<b>WEB SCRAPING AND NAÏVE BAYES CLASSIFICATION FOR JOB SEARCH ENGINE.....</b>	<b>223</b>
<i>C Slamet, R Andrian, D S Maylawati, Suhendar, W Darmalaksana, M A Ramdhani</i>	
<b>SOCIAL MEDIA-BASED IDENTIFIER FOR NATURAL DISASTER.....</b>	<b>230</b>
<i>C Slamet, A Rahman, A Sutedi, W Darmalaksana, M A Ramdhani, D S Maylawati</i>	
<b>DOES IT MATTER?.....</b>	<b>237</b>
<i>D A Nuswantara, D Nugrohoseno, S Iriani</i>	
<b>DEA OPTIMIZATION WITH NEURAL NETWORK IN BENCHMARKING PROCESS.....</b>	<b>240</b>
<i>D Abdullah, Tulus, S Suwilo, S Effendi, Hartono</i>	

<b>THE IMPLEMENTATION OF SPEECH RECOGNITION USING MEL-FREQUENCY CEPSTRUM COEFFICIENTS (MFCC) AND SUPPORT VECTOR MACHINE (SVM) METHOD BASED ON PYTHON TO CONTROL ROBOT ARM.....</b>	248
<i>D Anggraeni, W S M Sanjaya, M Y S Nurasyidiek, M Munawwaroh</i>	
<b>A MODERN VIBE: THE-REDESIGN OF TRADITIONAL MARKET .....</b>	258
<i>D Fitria, T Megayanti, I Surasetja</i>	
<b>PHYSICS PHENOMENA ON HOUSING ARCHITECTURE IN KAMPUNG NAGA .....</b>	263
<i>D Nasrudin, C Rochman, A Muhyiddin</i>	
<b>STORE IMAGE: MEDIATOR OF SOCIAL RESPONSIBILITY AND CUSTOMER PERCEIVED VALUE TO CUSTOMER TRUST FOR ORGANIC PRODUCTS .....</b>	270
<i>D P Alamsyah, D Syarifuddin</i>	
<b>EXPERIMENTAL STUDY OF INCORPORATING FINS ON THE ROTOR BLADES OF SAVONIUS WIND TURBINE .....</b>	276
<i>D Prabowo, D S Wijayanto, I Widiastuti</i>	
<b>SYSTEMATIC DESIGN OF EXPERT SYSTEM USING UNIFIED MODELLING LANGUAGE.....</b>	281
<i>D S Maylawati, W Darmalaksana, M A Ramdhani</i>	
<b>MODEL OF CYTATION NETWORK ANALYSIS USING SEQUENCE OF WORDS AS STRUCTURED TEXT REPRESENTATION .....</b>	288
<i>D S Maylawati, A Rahman, M I N Saputra, W Darmalaksana, M A Ramdhani</i>	
<b>IDENTIFICATION AND CALCULATION OF POLLUTANT LOAD IN CIWARINGIN WATERSHED, INDONESIA: DOMESTIC SECTOR.....</b>	294
<i>D S Wijaya, I Juwana</i>	
<b>COMPUTER VIRTUAL MEDIA-AIDED ACTIVE LEARNING STUDENT SHEETS (ALSS) TO IMPROVE STUDENTS' UNDERSTANDING ON PV, PT, VT, AND TS DIAGRAMS OF IDEAL GAS.....</b>	306
<i>D Saepuzaman, S Karim, M G Nugraha, A Zulfikar</i>	
<b>EXPANSION PARALLEL LIQUID REFRIGERANT ON A VAPOR COMPRESSION SYSTEMS WITH R-290.....</b>	313
<i>D Supriawan, E T Berman, M Komaro, Mutaufiq</i>	
<b>EMOJI: REPRESENTATIONS OF NONVERBAL SYMBOLS IN COMMUNICATION TECHNOLOGY .....</b>	319
<i>D Tandyonomanu, Tsuroyya</i>	
<b>IMPROVING STUDENTS' ARGUMENTATION BY PROVIDING ANALOGICAL MAPPING-BASED THROUGH LAB INQUIRY FOR SCIENCE CLASS.....</b>	326
<i>Diniya, D Rusdiana</i>	
<b>THE IMPLEMENTATION OF ALERT SYSTEM FOR LAN NETWORK MONITORING USING THE DUDE BASED EMAIL.....</b>	331
<i>E A Z Hamidi, L S Dzudin, A Faroqi, M A Ramdhani</i>	
<b>THE EFFECTIVENESS OF OINTMENT OF PATAH TULANG STEM'S (EUPHORBIA TIRUCALLI) ETHANOL EXTRACT FOR BURN WOUND HEALING ON WHITE RATS (RATTUS NORVEGICUS) .....</b>	339
<i>S Aisah, P I Utami, E Genatrika</i>	
<b>SELECTION OF OPTIMAL FACTOR LEVEL FROM PROCESS PARAMETERS IN PALM OIL INDUSTRY .....</b>	346
<i>E Ginting, M M Tambunan</i>	
<b>GENIUS LEARNING STRATEGY OF BASIC PROGRAMMING IN AN ADVENTURE GAME.....</b>	352
<i>E Junaeti, H Sutarno, R R Nurmallasari</i>	
<b>PLANT LEAF RECOGNITION USING COMPETITIVE BASED LEARNING ALGORITHM.....</b>	357
<i>E M Imah, Y S Rahayu, A Wintarti</i>	
<b>ENVIRONMENTAL PERFORMANCE MEASUREMENT OF THE SIMPLE URBAN HOUSING IN MARTUBUNG MEDAN .....</b>	366
<i>E Nababan, N Siahaan, P Bangun, E Rosmaini</i>	
<b>DESIGN AND DEVELOPMENT OF IMPACT LOAD SENSOR FOR DYNAMIC TESTING PURPOSES .....</b>	377
<i>E Permana, Yayat</i>	
<b>DETERMINE THE OPTIMAL SOLUTION FOR LINEAR PROGRAMMING WITH INTERVAL COEFFICIENTS .....</b>	386
<i>E R Wulan, M A Ramdhani, Indriani</i>	
<b>ECOLOGICAL APPROACH OF CAMPUS WASTEWATER TREATMENT USING CONSTRUCTED WETLAND .....</b>	392
<i>E T Winanti, E Rahmadyanti, I N Fajarwati</i>	

<b>MANIPULATIVE'S OF FUNCTION TRANSLATION</b> .....	400
<i>E Sudihartinih, T Purniati</i>	
<b>EVALUATION OF PERFORMANCE AN AIR CONDITIONING SYSTEMS USING T-JUNCTION FLASH GAS REFRIGERANT</b> .....	404
<i>E T Berman, A Setiawan, E S Arifianto, Mutaufiq</i>	
<b>STUDY OF ADJUSTMENT DELAY SCHEME ON IEEE 802.15.4 NETWORKS AT BEACON ENABLED MODE</b> .....	410
<i>E Yundra</i>	
<b>MPPT BASED ON FUZZY LOGIC CONTROLLER FOR PHOTOVOLTAIC SYSTEM USING PSIM AND SIMULINK</b> .....	418
<i>E N Yaqin, A G Abdullah, D L Hakim, A B D Nandiyanto</i>	
<b>PARENTAL DEFENCE ON THE OFFSPRING: MATHEMATICAL MODEL AND SIMULATION</b> .....	430
<i>F Ilahi, J Juariah, R Kariadinata</i>	
<b>AUGMENTED REALITY (AR) TECHNOLOGY ON THE ANDROID OPERATING SYSTEM IN CHEMISTRY LEARNING</b> .....	436
<i>F S Irwansyah, Y M Yusuf, I Farida, M A Ramdhani</i>	
<b>FINITE ELEMENT ANALYSIS ON THE UNLOADING ELASTIC MODULUS OF ALUMINUM FOAMS BY UNIT-CELL MODEL</b> .....	443
<i>F Triawan, B A Budiman, F B Juangsa, L A Prananto, M Aziz</i>	
<b>DYE SENSITIZED SOLAR CELLS (DSSC) PERFORMANCE REVIEWED FROM THE COMPOSITION OF TITANIUM DIOXIDE (TiO<sub>2</sub>)/ZINC OXIDE (ZNO)</b> .....	451
<i>H Aliah, B Bernando, F Puspitasari, A Setiawan, P Pitriana, B W Nuryadin, M A Ramdhani</i>	
<b>EFFECT OF BIODIESEL AND RADIATOR TUBE HEATER ON FUEL CONSUMPTION OF COMPRESSION IGNITION ENGINE</b> .....	456
<i>H Bisri, D S Wijayanto, Ranto</i>	
<b>ADVENTURE GAME APPLICATION AS A DIGITAL MEDIA TO INTRODUCE BATURRADEN FOLKLORE</b> .....	465
<i>H Mustafidah, S H Ramadhani</i>	
<b>METHOD COMPARISON OF 3D FACIAL RECONSTRUCTION CORESPONDING TO 2D IMAGE</b> .....	473
<i>H P A Tjahyaningtjas, P Puspitasari, Y Yamasari, L Anifah, Igp A Buditjahyanto</i>	
<b>A REVIEW OF SPENT LEAD-ACID BATTERY RECYCLING TECHNOLOGY IN INDONESIA: COMPARISON AND RECOMMENDATION OF ENVIRONMENT-FRIENDLY PROCESS</b> .....	480
<i>H Zakiyya, Y D Distya, R Ellen</i>	
<b>OPTIMIZATION MODEL OF K-MEANS CLUSTERING USING ARTIFICIAL NEURAL NETWORKS TO HANDLE CLASS IMBALANCE PROBLEM</b> .....	490
<i>Hartono, O S Sitompul, Tulus, E B Nababan</i>	
<b>BIOCOMPATIBLE HYDROGEL FILM OF POLYETHYLENE OXIDE-POLYETHYLENE GLYCOL DIMETACRYLATE FOR WOUND DRESSING APPLICATION</b> .....	499
<i>Haryanto, Fani, A Mahardian</i>	
<b>IMPROVING WORK SYSTEM DESIGN USING MACRO-ERGONOMICS APPROACH IN RUBBER PROCESSING PLANT</b> .....	506
<i>D Wahyuni, I Budiman, H Nasution, K Wijaya</i>	
<b>LEARNING MATERIAL OF CHEMISTRY IN HIGH SCHOOL USING MULTIPLE REPRESENTATIONS</b> .....	512
<i>I Farida, I Helsy, I Fitriani, M A Ramdhani</i>	
<b>ANALYSIS OF NEW STUDENT SELECTION USING CLUSTERING ALGORITHMS</b> .....	518
<i>I M Suartana, A I N Hidayat</i>	
<b>ECONOMIC VALUE OF PALM PLANTATION IN NORTH SUMATERA AND CONTRIBUTION TO PRODUCT DOMESTIC REGIONAL BRUTO</b> .....	524
<i>I Muda, H S Siregar, S A Sembiring, Ramli, H Manurung, Z Zein</i>	
<b>PERFORMANCE MEASUREMENT ANALYSIS OF PALM COOPERATIVE COOPERATION WITH USING BALANCED SCORECARD</b> .....	530
<i>I Muda, F Roosmawati, H S Siregar, Ramli, H Manurung, T Banuas</i>	
<b>INSTITUTIONAL FISHERMEN ECONOMIC DEVELOPMENT MODELS AND BANKING SUPPORT IN THE DEVELOPMENT OF THE INNOVATION SYSTEM OF FISHERIES AND MARINE AREA IN NORTH SUMATERA</b> .....	536
<i>I Muda, Rahmanta, Marhayanie, A S Putra</i>	

## PART 2

<b>HOW TO IMPROVE SERVICE QUALITY IN SCHOOL COUNSELLING SERVICES?</b> .....	542
<i>M Idat, A S Gina, M N Ardi</i>	
<b>CARDIORESPIRATORY ENDURANCE AND BALANCE OF ELDERLY DEMENTIA PATIENTS IN NURSING HOME</b> .....	549
<i>I N Arshintia, L A Fitriana, T Adikusuma, S Rohaedi, T P Putri</i>	
<b>COMPARISON OF PERIODIC REVIEW POLICY AND CONTINUOUS REVIEW POLICY FOR THE AUTOMOTIVE INDUSTRY INVENTORY SYSTEM</b> .....	553
<i>I Rizkya, K Syahputri, R M Sari, Anizar, I Siregar, E Ginting</i>	
<b>APPLICATION OF DESKTOP-BASED BATIK INFORMATION SYSTEM</b> .....	559
<i>I Widiaty, L S Riza, A G Abdullah, S R Mubaroq</i>	
<b>MATHROID APPLICATION DEVELOPMENT ON THREE-DIMENSIONAL GEOMETRY MATERIALS</b> .....	565
<i>J Juariah, A H Syaf, I Rohimah, H Sugilar, R Kariadinata</i>	
<b>THE TENSILE STRENGTH EVALUATION OF UNTREATED AGEL LEAF/JUTE/GLASS FIBER-REINFORCED HYBRID COMPOSITE</b> .....	572
<i>K A Ilman, Jamasri, Kusmono, H Hestiawan</i>	
<b>ANALYSIS OF CAUSES OF DEFECTS GLOVES AND BAR SOAP USING FAILURE MODE AND EFFECT ANALYSIS (FMEA) IN XYZ COMPANY</b> .....	578
<i>K Siregar, S F Siregar</i>	
<b>IMPROVING ASSEMBLY LINE BALANCING USING MOODIE YOUNG METHODS ON DUMP TRUCK PRODUCTION</b> .....	584
<i>K Syahputri, R M Sari, Anizar, I Rizkya, J Leviza, I Siregar</i>	
<b>MORPHOLOGICAL CHARACTERIZATION OF ETLINGERA ELATIOR (JACK) EXPLORED IN SUKABUMI, WEST JAVA, INDONESIA</b> .....	590
<i>L Chaidir, C Hidayat, A Supriadin, A Aina, Nuryan, M A Ramdhani</i>	
<b>IMPLEMENTATION OF AUTOMATION SYSTEM FOR HUMIDITY MONITORING AND IRRIGATION SYSTEM</b> .....	593
<i>L Kamelia, M A Ramdhani, A Faroqi, V Rifadiapriyana</i>	
<b>REVIEW OF SOME EXISTING WORK FOR SELF-RECOVERY FRAGILE WATERMARKING ALGORITHMS</b> .....	598
<i>L Rakhmawati, N Rochmawati</i>	
<b>THE IMPLEMENTATION OF FLOOR-AREA RATIO IN THE EASTERN CORRIDOR OF JALAN IR. H. DJUANDA BANDUNG</b> .....	605
<i>L Widaningsih, T Megayanti, R Minggra</i>	
<b>IMPROVEMENT OF CIBADUYUT HOUSING DISTRICT TO FACING CITY GROWTH PHENOMENA, BASED ON "SYSTEM APPROACH TO ARCHITECTURE" CONCEPT</b> .....	612
<i>L Yosita, Rr T Busono, D Ahdiat H</i>	
<b>OPTIMIZATION OF RECTILINEAR MOTION EXPERIMENTS USING TRACKER APPLICATION</b> .....	619
<i>M G Nugraha, K H Kirana, F Nugraha, E A Nurinsani, F N Sholihat</i>	
<b>EFFECT OF PRUNUS DULCIS EXTRACT AGAINST TOTAL CHOLESTEROL LEVEL IN MICE THAT GIVEN MONOSODIUM GLUTAMATE</b> .....	626
<i>M I Sari, N B Rahmat, D W Wijaya</i>	
<b>DESIGNING WEB DATABASE APPLICATION FOR LOCAL MEDICINAL PLANTS OF GORONTALO USING MVC ARCHITECTURE</b> .....	632
<i>M Latief, N Kandowangko, R Yusuf</i>	
<b>MICROENCAPSULATION OF DRAGON FRUIT (HYLOCEREUS POLYRHIZUS) PEEL EXTRACT USING MALTODEXTRIN</b> .....	640
<i>M N Handayani, I Khoerunnisa, D Cakrawati, A Sulastri</i>	
<b>E-RUBRIC: SCIENTIFIC WORK BASED ON ANDROID FOR EXPERIMENTAL PHYSIC</b> .....	647
<i>M N Hudha, S D Aji, C Huda</i>	
<b>DEVELOPMENT OF VOCATIONAL INTERACTIVE MULTIMEDIA BASED ON MOBILE LEARNING</b> .....	653
<i>M S Sumbawati, R C Wibawa, Munoto, S C Wibawa</i>	
<b>COMPETITIVE ADVANTAGE: MEDIATOR OF DIVERSIFICATION AND PERFORMANCE</b> .....	660
<i>M Sihite</i>	
<b>INCLUSION PROPERTIES OF ORLICZ SPACES AND WEAK ORLICZ SPACES GENERATED BY CONCAVE FUNCTIONS</b> .....	666
<i>M Taqiyuddin, A A Masta</i>	

<b>IMPLEMENTATION OF SHARING KNOWLEDGE MANAGEMENT IN INTERNSHIP PROGRAM USING WEB-BASED INFORMATION SYSTEM .....</b>	<b>671</b>
<i>M Somantri, A Djohar, A G Abdullah, A Juhana, S Aryadi</i>	
<b>ON THE DESIGN OF WATERING AND LIGHTING CONTROL SYSTEMS FOR CHRYSANTHEMUM CULTIVATION IN GREENHOUSE BASED ON INTERNET OF THINGS.....</b>	<b>680</b>
<i>N Fajrin, I Taufik, N Ismail, L Kamelia, M A Ramdhani</i>	
<b>INVESTORS PSYCHOLOGY: MEDIATOR OF CSR AND MARKET CAPITALIZATION .....</b>	<b>686</b>
<i>N H Rusdi, I Primiana, E T Sule, M F Cahyandito</i>	
<b>THE EFFECT OF AMPLITUDE MODULATION INDEX AND FREQUENCY MODULATION INDEX ON TOTAL HARMONIC DISTORTION IN 1-PHASE INVERTER.....</b>	<b>692</b>
<i>N Ismail, A Permadi, A Risdiyanto, B Susanto, M A Ramdhani</i>	
<b>PERFORMANCE OF PELTON TURBINE FOR HYDROELECTRIC GENERATION IN VARYING DESIGN PARAMETERS .....</b>	<b>698</b>
<i>N Kholifah, A C Setyawan, D S Wijayanto, I Widiastuti, H Saputro</i>	
<b>A RESPONSIVE WEB-BASED QR CODE FOR INVENTORY IN THE LABORATORY OF INFORMATICS, UNESA .....</b>	<b>703</b>
<i>N Rochmawati, I G P A Buditjahjanto, R E Putra, A Y Wicaksono</i>	
<b>PRELIMINARY STUDY OF FAILURE ANALYSIS ON TUBE MATERIAL BOILER BASED ON PRESSURE ASPECT.....</b>	<b>710</b>
<i>N S Drastiwati, H Zakiyya, F Y Utama, W D Kurniawan</i>	
<b>A MATHEMATICS MODEL FOR DETERMINATING THE VALUE OF IJARAH CONTRACT .....</b>	<b>716</b>
<i>N Sumarti</i>	
<b>PHYSIOLOGICAL DEMANDS OF PLAYING FIELD HOCKEY GAME AT SUB ELITE PLAYERS .....</b>	<b>722</b>
<i>N W Kusnanik, Y S Rahayu, B Rattray</i>	
<b>DETERMINATION OF SODIUM, POTASSIUM, MAGNESIUM, AND CALCIUM MINERALS LEVEL IN FRESH AND BOILED BROCCOLI AND CAULIFLOWER BY ATOMIC ABSORPTION SPECTROMETRY .....</b>	<b>727</b>
<i>Nerdy</i>	
<b>GREEN AWARENESS AND PURCHASE INTENTION FOR ORGANIC PRODUCTS.....</b>	<b>735</b>
<i>O I B Hariyanto</i>	
<b>FATTY ACID ANALYSIS OF LIPID EXTRACTED FROM RATS BY GAS CHROMATOGRAPHY-MASS SPECTROMETRY METHOD .....</b>	<b>740</b>
<i>P I Utami, W S Rahayu, I Nugraha, A N Rochana</i>	
<b>THE EMERGING WIRELESS BODY AREA NETWORK ON ANDROID SMARTPHONES: A REVIEW .....</b>	<b>744</b>
<i>P Puspitaningayu, A Widodo, E Yundra</i>	
<b>STUDY ON THE SEAWATER SURFACE ELEVATION THROUGH NUMERICAL MODELING APPROACH IN GULF OF MANADO .....</b>	<b>749</b>
<i>P T D Rompas, J D I Manongko</i>	
<b>MODIFIED POLYSULFONE ULTRAFILTRATION MEMBRANE FOR HUMIC ACID REMOVAL DURING PEAT WATER TREATMENT .....</b>	<b>756</b>
<i>P T P Aryanti, A M Noviyani, M F Kurnia, D A Rahayu, A Z Nisa</i>	
<b>SHORT TERM LOAD FORECASTING FOR WEEKENDS IN INDONESIA: COMPARISON OF THREE METHODS .....</b>	<b>765</b>
<i>E N Yaqin, A G Abdullah, D Chandra, T A Pratiwi, S Adhigunarto, A M Shidiq, A J Ramadhan, R P Putra, A F Alfaridzi, M F A Muttaqin, A B D Nandiyanto</i>	
<b>THE INFLUENCE OF BASE COURSE TYPES ON RIGID PAVEMENT CONCRETE STRENGTH.....</b>	<b>774</b>
<i>Purnawan, S Utami</i>	
<b>IMPLEMENTATION OF NEURAL NETWORK TO DETERMINE THE NEW COLLEGE STUDENTS .....</b>	<b>780</b>
<i>R E Putra, A I Nurhidayat, A Y Wicaksono</i>	
<b>THE ENACTMENT OF MATHEMATICS CONTENT KNOWLEDGE AND MATHEMATICS PEDAGOGICAL CONTENT KNOWLEDGE IN TEACHING PRACTICE OF RATIO AND PROPORTION: A CASE OF TWO PRIMARY .....</b>	<b>786</b>
<i>R Ekawati, F Lin, K Yang</i>	
<b>ISOLATION AND CHARACTERIZATION OF OIL-DEGRADING BACTERIA FROM ONE OF SOUTH SUMATERA'S OILFIELD.....</b>	<b>795</b>
<i>I A Purwasena, D I Astuti, R Fatmawati, Q Afinanisa</i>	
<b>SEQUENCING OF DUST FILTER PRODUCTION PROCESS USING DESIGN STRUCTURE MATRIX (DSM).....</b>	<b>802</b>
<i>R M Sari, A R Matondang, K Syahputri, Anizar, I Siregar, I Rizkya, C Ursula</i>	



<b>CROSSING RIVERS PROBLEM SOLUTION WITH BREADTH-FIRST SEARCH APPROACH</b> .....	808
<i>R Ratnadewi, E M Sartika, R Rahim, B Anwar, M Syahril, H Winata</i>	
<b>IMPLEMENTATION OF AUTOMATIC CLUSTERING ALGORITHM AND FUZZY TIME SERIES IN MOTORCYCLE SALES FORECASTING</b> .....	814
<i>Rasim, E Junaeti, R Wirantika</i>	
<b>PREPARATION OF CARBON-CHITOSAN-POLYVINYL CHLORIDE (CC-PVC) MATERIAL AND ITS APPLICATION TO ELECTROCHEMICAL DEGRADATION OF METHYLENE BLUE IN SODIUM CHLORIDE SOLUTION</b> .....	818
<i>Riyanto, A D Prawidha</i>	
<b>ELECTROCHEMICAL SYNTHESIS OF ETHANOL FROM CARBON DIOXIDE USING COPPER AND CARBON-POLYVINYL CHLORIDE (C-PVC) ELECTRODE</b> .....	827
<i>Riyanto, T A Afati</i>	
<b>DEVELOPMENT MATHEMATIC ASSESSMENT TO INCREASE MATHEMATICAL PREREQUISITE ABILITY ON THE STUDENT WITH LEARNING DISABILITIES IN INCLUSIVE ELEMENTARY SCHOOL</b> .....	836
<i>S T U Robiansyah, F Nanang, Hidayat</i>	
<b>CREATIVE DIGITAL WORKSHEET BASE ON MOBILE LEARNING</b> .....	843
<i>S C Wibawa, R Cholifah, A W Utami, A I Nurhidayat</i>	
<b>COMPUTER ANIMATION WITH ADOBE FLASH PROFESSIONAL CS6 IN NEWTON'S LAW</b> .....	852
<i>S D Aji, M N Hudha, C Huda, G Gufran</i>	
<b>PERFORMANCE 'S' TYPE SAVONIUS WIND TURBINE WITH VARIATION OF FIN ADDITION ON BLADE</b> .....	855
<i>S F Pamungkas, D S Wijayanto, H Saputro, I Widiastuti</i>	
<b>ANALYSIS OF RULES FOR ISLAMIC INHERITANCE LAW IN INDONESIA USING HYBRID RULE BASED LEARNING</b> .....	862
<i>S Khosyi'Ah, M Irfan, D S Maylawati, O S Mukhlas</i>	
<b>INVESTIGATION ON MUNICIPAL SOLID WASTE CHARACTERISTICS FROM COMMERCIAL SOURCES AND THEIR RECYCLING POTENTIAL IN PADANG CITY, INDONESIA</b> .....	868
<i>S Raharjo, Y Ruslinda, V S Bachtiar, R A Regia, M Fadhil, I Rachman, T Matsumoto</i>	
<b>EXTRA N-HEKSANA ANTIFUNGI CREAM ALPINIA GALANGA</b> .....	877
<i>S Rahmatullah, N Windayani, N N Fadilah</i>	
<b>CONVERSION OF CARBON DIOXIDE INTO ETHANOL BY ELECTROCHEMICAL SYNTHESIS METHOD USING CU-ZN ELECTRODE</b> .....	883
<i>Riyanto, S Ramadan, S Fariduddin, A R Aminudin, A K Hayatri</i>	
<b>MULTIMEDIA BASED ON SCIENTIFIC APPROACH FOR PERIODIC SYSTEM OF ELEMENT</b> .....	892
<i>S Sari, D M Aryana, C Z Subarkah, M A Ramdhani</i>	
<b>THEORETICAL INVESTIGATION OF INCLUSION COMPLEX BETWEEN OMEPRAZOLE ENANTIOMERS AND CARBOXYMETHYL-B-CYCLODEXTRIN</b> .....	898
<i>S Setiadji, C D D Sundari, M A Ramdhani, A B K Umam, A L Ivansyah</i>	
<b>NEEDS AND PROBLEMS OF POSBINDU PROGRAM: COMMUNITY HEALTH VOLUNTEERS PERSPECTIVE</b> .....	904
<i>S T Putri, S Andriyani</i>	
<b>ACCURATION OF TIME SERIES AND SPATIAL INTERPOLATION METHOD FOR PREDICTION OF PRECIPITATION DISTRIBUTION ON THE GEOGRAPHICAL INFORMATION SYSTEM</b> .....	909
<i>S Y J Prasetyo, K D Hartomo</i>	
<b>MUCOLYTIC ACTIVITY TEST OF SHALLOT EXTRACT (ALLIUM ASCALONICUM L) BY IN VITRO</b> .....	917
<i>D A Deswati, M A Dhina, S R Mubaroq</i>	
<b>THE CFD SIMULATION OF CYCLONE SEPARATOR WITHOUT AND WITH THE COUNTER-CONE IN THE GASIFICATION PROCESS</b> .....	922
<i>H Saputro, T Firdani, R Muslim, Y Estriyanto, D S Wijayanto, S Lasmini, Khaniffudin</i>	
<b>BIRD ON YOUR SMARTPHONE: HOW TO MAKE IDENTIFICATION FASTER?</b> .....	932
<i>T Hidayat, I S Kurniawan, F S Tapilow</i>	
<b>BUILDING COVERAGE RATIO AT THE EASTERN CORRIDOR OF JALAN IR. H. DJUANDA BANDUNG</b> .....	940
<i>T Megayanti, L Widaningsih, R Minggra, N I K Dewi</i>	
<b>THE CONCEPT OF THE RELATIONSHIP BETWEEN INFORMATION SYSTEM MATURITY AND INDUSTRY PERFORMANCE IN INDONESIA</b> .....	945
<i>V R Palilingan, T P Mario</i>	

<b>EFFECT OF WIND ANGLE DIRECTION ON CARBON MONOXIDE (CO) CONCENTRATION DISPERSION ON TRAFFIC FLOW IN PADANG CITY .....</b>	<b>954</b>
<i>V S Bachtiar, P Purnawan, R Afrianita, N Dahlia</i>	
<b>IMPLEMENTATION OF MAMDANI FUZZY METHOD IN EMPLOYEE PROMOTION SYSTEM.....</b>	<b>961</b>
<i>W B Zulfikar, Junadi, P K Prasetyo, M A Ramdhani</i>	
<b>IMPLEMENTATION OF STEAM EDUCATION TO IMPROVE MASTERY CONCEPT.....</b>	<b>966</b>
<i>W Liliawati, H Rusnayati, Purwanto, G Aristantia</i>	
<b>QIBLA FINDER AND SHOLAT TIMES BASED ON DIGITAL COMPASS, GPS AND MICROPROCESSOR.....</b>	<b>972</b>
<i>W S M Sanjaya, D Anggraeni, F I Nurrahman, W G Kresnadjaja, I P Dewi, Mira, H Aliah, L Marlina</i>	
<b>A POLYCHORIC CORRELATION TO IDENTIFY THE PRINCIPLE COMPONENT IN CLASSIFYING SINGLE TUITION FEE CAPABILITIES ON THE STUDENTS SOCIO- ECONOMIC DATABASE.....</b>	<b>981</b>
<i>W Yustanti, Y Anistiyasari</i>	
<b>THE PERFORMANCE OF CHROME-COATED COPPER AS METALLIC CATALYTIC CONVERTER TO REDUCE EXHAUST GAS EMISSIONS FROM SPARK-IGNITION ENGINE.....</b>	<b>990</b>
<i>Warju, S P Harto, Soenarto</i>	
<b>THE SYSTEM OF INVENTORY FORECASTING IN PT. XYZ BY USING THE METHOD OF HOLT WINTER MULTIPLICATIVE.....</b>	<b>1005</b>
<i>W Shaleh, Rasim, Wahyudin</i>	
<b>IMPLEMENTATION OF NEAREST NEIGHBOR USING HSV TO IDENTIFY SKIN DISEASE .....</b>	<b>1014</b>
<i>Y A Gerhana, W B Zulfikar, A H Ramdani, M A Ramdhani</i>	
<b>INTEGRATION HEAD MOUNTED DISPLAY DEVICE AND HAND MOTION GESTURE DEVICE FOR VIRTUAL REALITY LABORATORY.....</b>	<b>1019</b>
<i>Y A Rengganis, M Safrodin, S Sukaridhoto</i>	
<b>ANALYSIS IMPACT OF DISTRIBUTED GENERATION INJECTION TO PROFILE OF VOLTAGE AND SHORT-CIRCUIT FAULT IN 20 KV DISTRIBUTION NETWORK SYSTEM .....</b>	<b>1027</b>
<i>Y Mulyadi, T Sucita, M D Rahmawan</i>	
<b>FAST DEPICTION INVARIANT VISUAL SIMILARITY FOR CONTENT BASED IMAGE RETRIEVAL BASED ON DATA-DRIVEN VISUAL SIMILARITY USING LINEAR DISCRIMINANT ANALYSIS.....</b>	<b>1042</b>
<i>Y Wihardi, W Setiawan, E Nugraha</i>	
<b>GEOLOGICAL ENGINEERING CHARACTERISTICS OF THE RESIDUAL SOIL: IMPLEMENTATION FOR SOIL BEARING CAPACITY AT GAYUNGAN, SURABAYA, EAST JAVA .....</b>	<b>1047</b>
<i>Y Y Rukmana, M Ridwan</i>	
<b>THE ROLE OF TEAK LEAVES (TECTONA GRANDIS), RHIZOBIUM, AND VESICULAR- ARBUSCULAR MYCORRHIZAE ON IMPROVING SOIL STRUCTURE AND SOIL NUTRITION .....</b>	<b>1055</b>
<i>Yuliani, Y S Rahayu</i>	
<b>INTEGRATION TELEGRAM BOT ON E-COMPLAINT APPLICATIONS IN COLLEGE.....</b>	<b>1062</b>
<i>M A Rosid, A Rachmadany, M T Multazam, A B D Nandiyanto, A G Abdullah, I Widiaty</i>	
<b>THE EFFECTIVENESS OF FULL DAY SCHOOL SYSTEM FOR STUDENTS' CHARACTER BUILDING.....</b>	<b>1068</b>
<i>A Benawa, R Peter, S Makmun</i>	
<b>EFFECT OF GINGER DRINKS ON NAUSEA VOMITING IN THE FIRST TRIMESTER OF PREGNANCY.....</b>	<b>1074</b>
<i>P A Kusumawardani, S Cholifah, M T Multazam, A B D Nandiyanto, A G Abdullah, I Widiaty</i>	
<b>CLASSIFICATION OF INDONESIAN QUOTE ON TWITTER USING NAÏVE BAYES.....</b>	<b>1078</b>
<i>A Rachmadany, Y M Pranoto, Gunawan, M T Multazam, A B D Nandiyanto, A G Abdullah, I Widiaty</i>	
<b>THE IMPLEMENTATION OF BLENDED LEARNING USING ANDROID-BASED TUTORIAL VIDEO IN COMPUTER PROGRAMMING COURSE II.....</b>	<b>1083</b>
<i>C Huda, M N Hudha, N Ain, A B D Nandiyanto, A G Abdullah, I Widiaty</i>	
<b>THE DEVELOPMENT OF DISPATCHER TRAINING SIMULATOR IN A THERMAL ENERGY GENERATION SYSTEM.....</b>	<b>1089</b>
<i>D L Hakim, A G Abdullah, Y Mulyadi, B Hasan</i>	

**Author Index**

PAPER • OPEN ACCESS

## Designing Web Database Application for Local Medicinal Plants of Gorontalo Using MVC Architecture

To cite this article: M Latief *et al* 2018 *IOP Conf. Ser.: Mater. Sci. Eng.* **288** 012098

View the [article online](#) for updates and enhancements.

# Designing Web Database Application for Local Medicinal Plants of Gorontalo Using MVC Architecture

M Latief<sup>1\*</sup>, N Kandowangko<sup>2</sup> and R Yusuf<sup>1</sup>

<sup>1</sup>Department of Information Engineering, Faculty of Engineering, Universitas Negeri Gorontalo

<sup>2</sup>Department of Biology, Faculty of Mathematics and Natural Sciences, Universitas Negeri Gorontalo, Jl. Jendral Sudirman No.6, Kota Gorontalo, Postcode 96112

\*mukhlis@ung.ac.id

**Abstract.** There is a significant number of unpublished research by university lecturers and students about Gorontalo's local medicinal plants that have contributed to the insufficiency of information to the society regarding the benefits of local medicinal plants. Moreover, the public lacks digital backup and documentation of the medicinal plants referred. This research aims to create a web database of Gorontalo's local medicinal plant, by comprising waterfall method of software engineering approach. The waterfall method involves four steps. The first step is system requirement analysis through preliminary study and observation based on field study and library research. The second is system design, by context diagram and system architecture designs, i.e., use case diagram, class diagram, activity diagram, and database design. The third is coding using PHP programming language by OOP (object oriented programming) concept and MVC (model view controller) architecture. The last step is system test using the black-box testing method. The result shows that the web application designed is able to operate properly.

## 1. Introduction

Medicinal plants have long played important roles in the treatment of diseases all over the world [1]. World health organization (WHO) recently has published a strategic plan for the development and promotion of traditional medicine in 4 areas [2], including: Identification of traditional medicine, Development of research and education, Establishment of unity and cooperation between the employees of traditional and modern medicine and Development of cultivation of the needed herbs to prevent destruction of natural resources.

Gorontalo is among the regions where the use of medicinal plants remains popular. Apart from preserving tradition from ancestors, people value and study herbs, which enable them to possess excellent potential knowledge of the medicinal plant. Herbal medicine plays an important role in rural areas, and various locally produced drugs are still being used as household remedies for different ailments [3]. The increasing use of traditional therapies demands more scientifically sound evidence for the principles behind therapies and for effectiveness of medicines [4]. Herbal medicine is still the mainstay of about 75–80% of the world population, mainly in the developing countries, for primary health care because of better cultural acceptability, better compatibility with the human body, and lesser side effects [5]. Also, traditional knowledge is the most affordable and accessible method available for the treatment of various diseases. Forests represent an important resource for local inhabitants who gather and sell medicinal plants as part of their livelihood [6].



As cited in Regional Mid-term Development Plan of Gorontalo Province of 2013 – 2017, there is an increase of 3,9 percent production of medicinal plant per year [7]. The history of medicinal plants utilization started from a mix of herbs as traditional medicine. The timeline continued until today, where the herbal medicines are being modernized and mass-produced. Each region has its distinct medicinal plants, and the expertise of it is inherited from ancestors. As time passes by, more chemical medicines are manufactured, making the knowledge about medicinal plants utilization limited to particular groups of people [8].

Medicinal plants are a source for a wide variety of natural antioxidants and are used for the treatment of diseases throughout the world [9]. Some of these properties are antimicrobial [10], anti-cancer [11], anti-diabetic [12], anti-atherosclerosis [13], immunomodulatory [14], and even reno-protection or hepatoprotective effects [15,16]. Studies on medicinal plants by kandowanko, katili [17,18,19] shows that there are numerous varieties of medicinal plants in Gorontalo, and among the varieties, it is possible to combine one another to create more new varieties of medicinal plants. Nonetheless, this situation is not supported by the existence of complete data documentation and archiving of the medicinal plants. Information of medicinal plants utilization is not disseminated thoroughly to the society as a result of a deficiency of information technology in the form of database to file the medicinal plants. This will eventually lessen the efforts of medicinal plants preservation if the situation remains unchanged. Ultimately, the public needs a database system of information of varieties and utilization of medicinal plants in Gorontalo which provides ease of access to its users.

## 2. Literature review

### 2.1. Previous researches

The term medicinal plants are referred to plants with medicinal properties and used for disease healing and prevention. By having medicinal properties, it means that the plants contain active substances to cure certain diseases; or if the plants do not contain any active substances, they provide resultant or synergy effect of various curing substances consumed [20].

Indonesia has diverse kinds of medicinal plants with a different use. There are more than 1.000 species of medicinal plants in Indonesia; most remain scientifically unidentified. Almost all regions in Indonesia have their distinct medicinal plants which are empirically proven to be effective. Some plants are included in featured herbs, i.e., *chamberbitter*, cat's whiskers, *temulawak* (Javanese ginger), turmeric, ginger, *morinda*, green *chiretta*, bay cedar leaves, guava, *daun salam* (bay leaf), and long pepper [21].

Furthermore, the research result of [22] concerning on ethnobotany of medicinal plants by indigenous community of Kampung Dukuh, Garut, West Java shows that the Kampung Dukuh community has identified about 137 kinds of medicinal plants. The community utilises different parts of medicinal plants, i.e., roots, stems, seeds, fruits, flowers, leaves, rhizomes, and tubers, in which leaves are the most utilised part. Likewise, [23] has conducted an ethnobotanical study of medicinal plants in Samin indigenous community of Bojonegoro regency, East Java. The result identified and documented about 54 kinds of herbs which are generally used by the people. Concurrently, research by [8] has discovered that among 30 varieties of plants used daily, there are 24 kinds of medicinal plants utilised by people nearby Tangale natural reserve to cure diseases.

The studies are in line with a study of ethnobotany of medicinal plants in Bone Bolango regency, Gorontalo which discovered 20 species of medicinal plants which are well-known to the society. Moreover, [20] in her research has designed an information system plan of medicinal plants.

The previous research described that there are diverse kinds of medicinal plants in Indonesia. Particularly, in Gorontalo, there are still a small number of findings of medicinal plants. However, it does not rule out the possibility that more kinds of the medicinal plant will be discovered. Medicinal plants have a promising future because there are about half million plants around the world, and most of them their medical activities have not investigate yet, and their medical activities could be decisive in the treatment of present or future studies [24].

This deficiency of database of Gorontalo's medicinal plants is feared to cause the knowledge and interest of utilising the medicinal plant to decrease gradually. Given that, a database system is needed to archive and provides people with the availability of information regarding the kinds and utilisation of medicinal plants in Gorontalo. Also, the software is expected to give ease to the public and the stakeholders in classifying different kinds of herbs and recommending suitable plants to use to cure certain diseases.

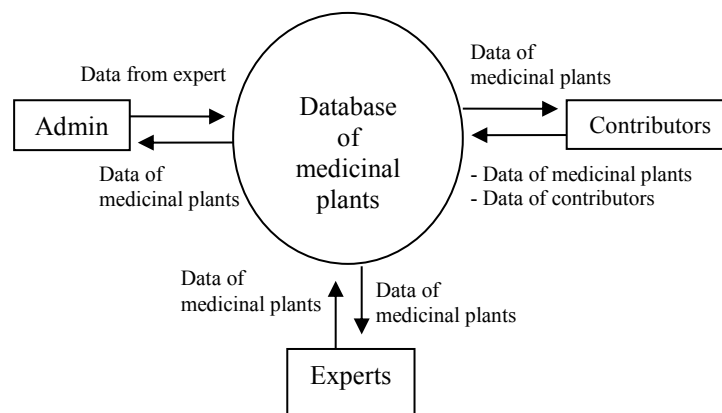
### 3. Methods

This study comprises software engineering approach by waterfall method. The waterfall model is a sequential, down-flow model often used in software development processes, it is called so because all the phases of Analysis, Design, Production/Implementation, Construction, Testing, and Maintenance are executed one by one and flow downwards like a waterfall [25] The main data needed in this research are data of medicinal plants varieties, each plant's utilisation, and images of medicinal plants varieties. The data are further processed and used as a reference in conducting experiments in the laboratory to achieve the purposes of this study. The research involves observation, library research, and documentation to acquire the data.

### 4. Results and discussion

#### 4.1. System analysis

This study engaged system analysis to collect information regarding needs of database system development of medicinal plants. An analysis was conducted to model a running business process and thus proposing a new one. The model uses context diagram model as in shown in Figure 1.

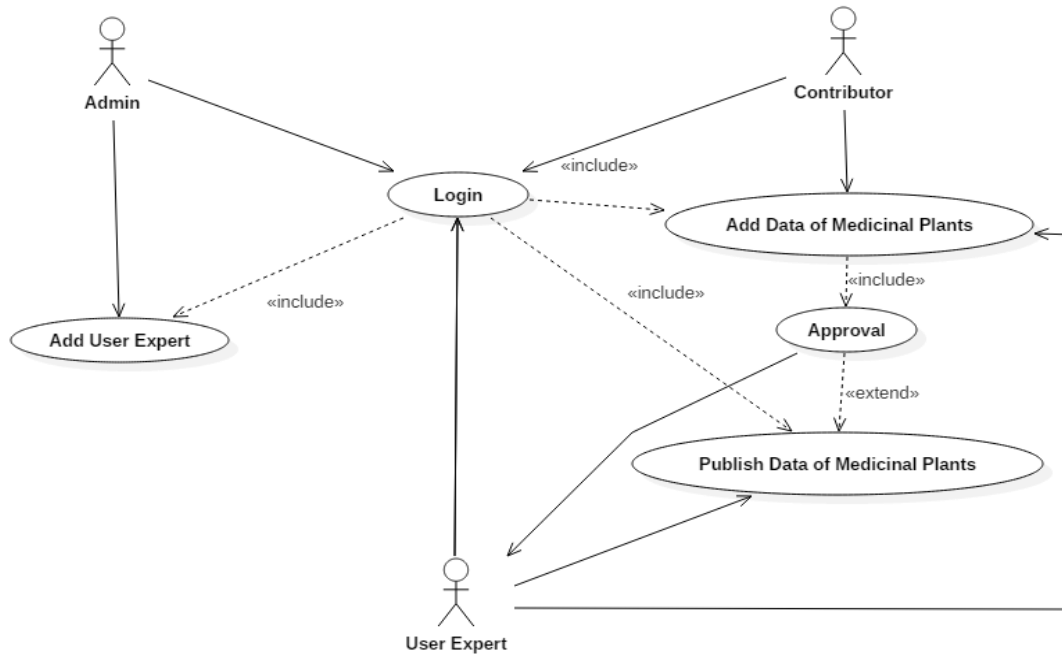


**Figure 1.** Context diagram of system proposed

From the Figure 1, this study formulated three functional system requirements, i.e.:

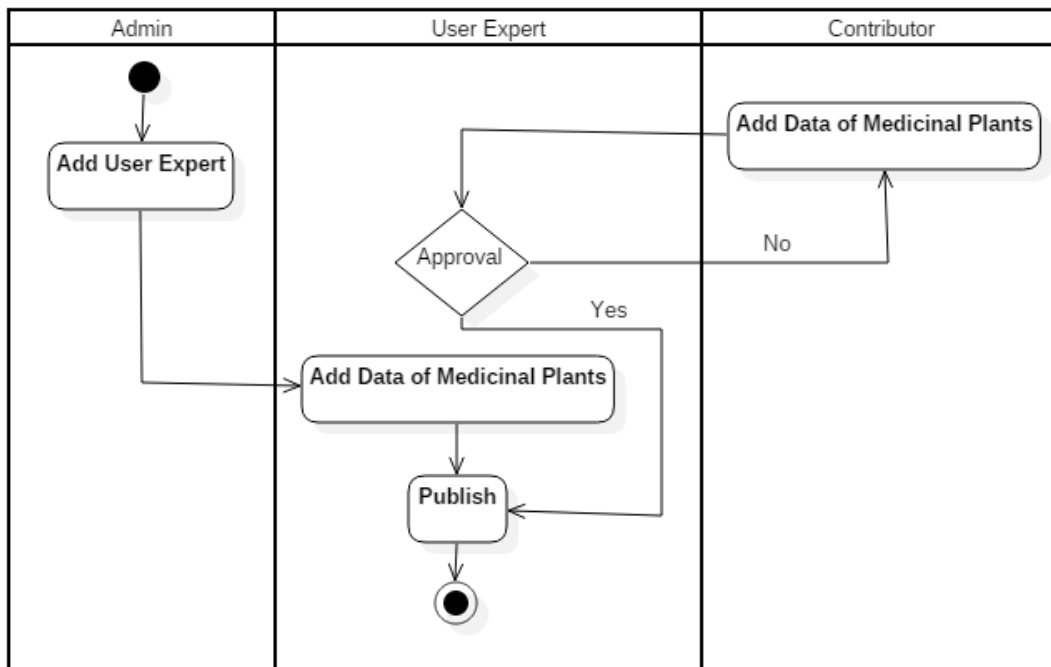
1. Administrator: an operator whose role is to input data from expert into descriptions of medicinal plants, not to modify the data of medicinal plant.
2. Contributor: Public who can register and log into the system to add and modify the data of medicinal plants
3. Expert: specialists and practitioners of medicinal plants registered by the administrator to add and modify the data of medicinal plants.

Furthermore, the previous functional were then elaborated into five functions which are related to system users (actor). The system is accessed by three actors, i.e. administrator, contributor, and expert. Every actor needs to log into the system before using it. The following Figure 2 displays the designed use case diagram.



**Figure 2.** Use case diagram of medicinal plants database

This study created an activity diagram of one of the functions of the program elaborated on use case diagram to get the details of the business process. It is showed in Figure 3 as follows.



**Figure 3.** Activity diagram of medicinal plants database

### 5. System design

This phase engaged process of designing the application architecture, the program in the form of a class diagram, data design (ERD), and the user interface.

#### 5.1. Application architecture

The study employed MVC architecture to design the web application of medicinal plants database by OOP (Object Oriented Programming) concept by PHP programming language and library JavaScript (jQuery). For the user interface, the study used HTML5 and Bootstrap 3 for responsive mobile. MVC architecture separates data (model), interface display (view), and how to process the two components (controller). When a user inputs a request to the system, the router identifies which controller and method to operate. Afterwards, the Controller finds the suitable data to be displayed by View to the user. MVC design pattern is very suitable for the development of web applications because they combine some of technology that’s usually divided into a set of layers [26]. The complete breakdown of MVC architecture in an application is elaborated in Figure 4 as follows:

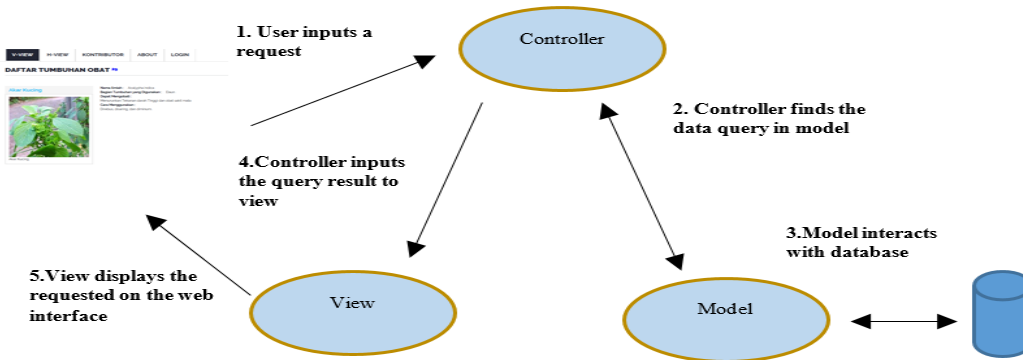


Figure 4. MVC Architecture in an application

#### 5.2. Class diagram

The class diagram is quite popular among web developers. It is a description of the hierarchy structure of a system. By class diagram, this study expected maximum result when designing system in a phase of implementation. Moreover, the attributes and functions of each class are detailed in the chart. Functions in each class have their tasks in accordance with the system requirements. The following Figure 5 presents the elaboration of class diagram.

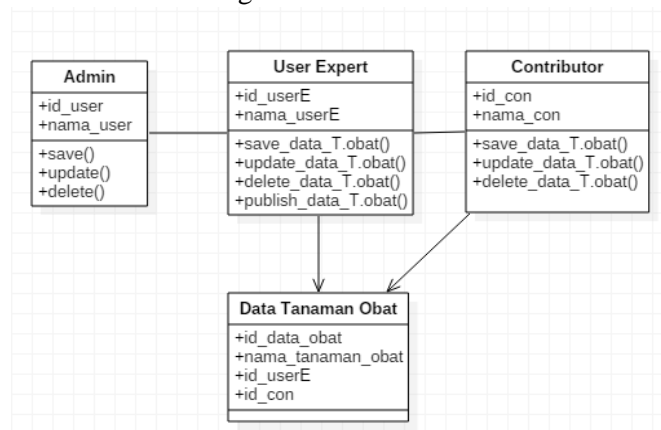


Figure 5. Class diagram of medicinal plants database



### 5.3. Database design

The phase began by arranging database structures based on an entity used and its connection with other entities. The connection between entities is displayed in an ERD representing data model in the system. Each table is related one another. The database of the application was entitled db\_tanamanobat\_sql which consists of a table of the user, medicinal plants, and picture detail. The detail is shown in Figure 6 as follows.

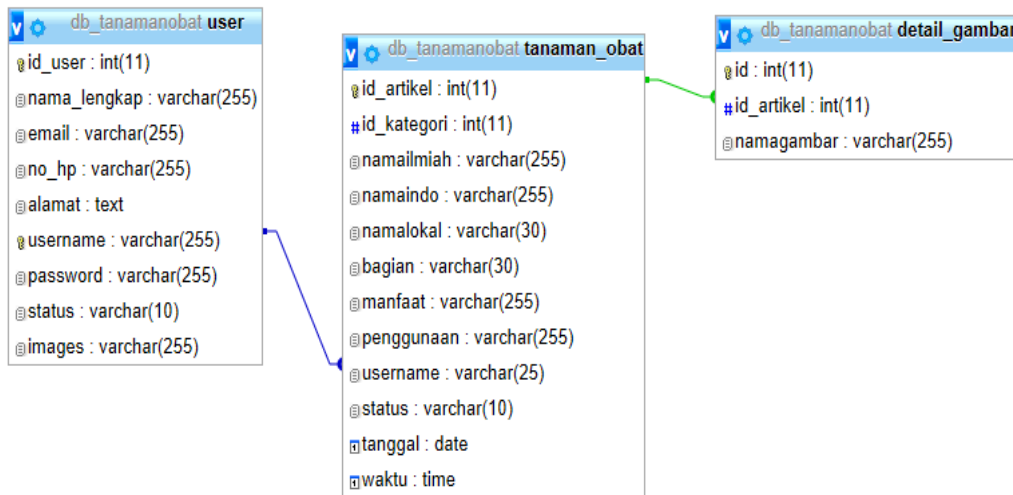


Figure 6. Design of medicinal plants database

### 6. Coding

This study created the system of the medicinal plant's database by PHP ver. 5.6.15 programming language, while the web server to run the programming was set up by using Apache ver. 2.4.17. Moreover, Database MySQL ver. 5.0 is used to store the data of the medicinal plants. The web application is accessible via browser with an internet connection by typing the web address <http://tanamanobat-gorontalo.id>. The following Figure 7 displays the main menu interface of the web application.

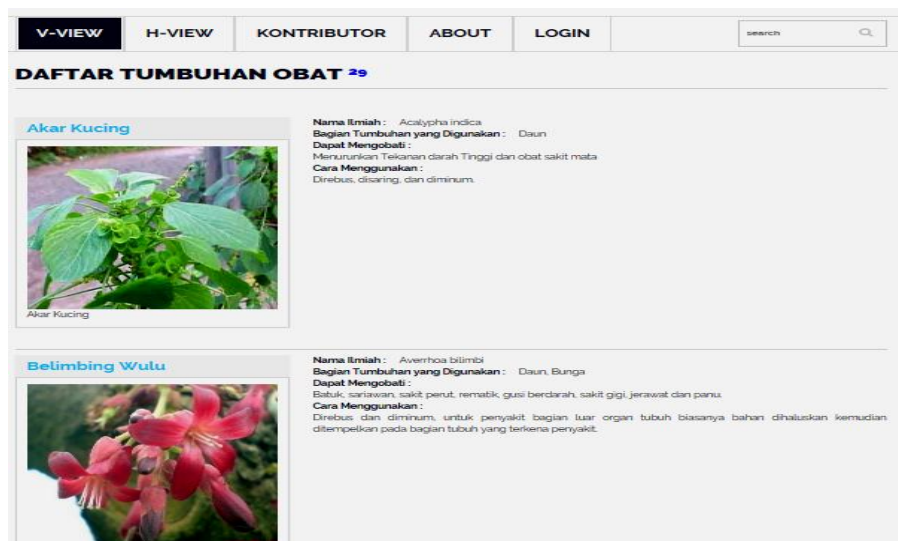


Figure 7. Interface of main menu page of the web application

## 7. System testing

In this phase, a thorough system testing of the web application was undergone to ensure that every part can operate properly. The system testing employed a black-box testing method, i.e. a testing method focusing at functional availability check of the application. The result showed that the system could meet the requirements set in the analysis phase. The full result of black-box testing is provided in Table 1.

**Table 1.** Black-box testing result of the application system

No	Use Case	Result
1	Use case log in	Checked and fulfilled
2	Register expert user	Checked and fulfilled
3	Add and modify data of medicinal plants	Checked and fulfilled
4	Publish data on medicinal plants	Checked and fulfilled
5	Approval	Checked and fulfilled

## 8. Conclusion

A web application of local medicinal plants database of Gorontalo has been successfully built to solve problems of the public regarding database of medicinal plants in Gorontalo. The system development engaged waterfall method which involves four phases, namely: analysis, design, coding, and testing. Most importantly, the system has features of seven main functional requirements and three actors, i.e. the admin, contributor, and expert user. Moreover, to build the web application, this study employed PHP programming language, while the system testing was undergone by using the black-box method with five tested items. Ultimately, the system testing resulted that the system has met the functional requirements as expected.

## References

- [1] Fallah Hoseini H, Fakhrzadeh H, Larijani B and Shikhsamani 2006 A. Review of anti-diabetic medicinal plant used in traditional medicine *J Med Plant* **5** 1–8
- [2] Naseri M 2004 Traditional Iranian medicine (TIM) and its promotion with guidelines of world health organization *Daneshvar Sci Res J Shahed Univ* **52** 53–66
- [3] Qureshi R A and Ghufuran M A 2005 *Medicinal value of some important roses and allied species of northern areas of Pakistan* in: Hashmi M, editor. Pakistan Rose Annual. Aabpara: Pictorial Printers (Pvt.) Ltd 24–29
- [4] Patwardhan B, Warude D, Pushpangadan P and Bhatt N 2005 Ayurveda and traditional Chinese medicine: a comparative overview. *Ecam.* **2** 465–473
- [5] Kamraj V P 2000 Herbal medicine *Curr Sci.* **78** 35–39
- [6] Adnan M and Holscher D 2011 Medicinal plants in old-growth, degraded and re-growth forests of NW Pakistan *For Ecoland Manag.* **261** 2105–2114
- [7] RPJMD Propinsi Gorontalo tahun 2012 – 2017. Bappeda Propinsi Gorontalo[Online] Available: [https://bappeda.gorontaloprov.go.id/file\\_share/rpjmd-prov-gorontalo-tahun-20122017\\_1\\_523.rar](https://bappeda.gorontaloprov.go.id/file_share/rpjmd-prov-gorontalo-tahun-20122017_1_523.rar)
- [8] Nurrani 2013 Pemanfaatan tradisional Tumbuhan alam berkhasiat obat oleh masyarakat di sekitar cagar alam tangae *Jurnal Info BPK Manado* **3** 1
- [9] Rafieian-Kopaei M and Baradaran A 2013 Plants antioxidants: From laboratory to clinic *J Nephropathology* **2** 2 152–153
- [10] Sharafati R, Sherafati F and Rafieian-kopaei M 2011 Biological characterization of Iranian walnut (*Juglans regia*) leaves *Turk J Biol* **35** 635–639
- [11] Shirzad H, Taji F, Pourgheysari B, Raisi S and Rafieian-Kopaei M 2012 Comparison of antitumour activities of heated and raw garlic extracts on fibrosarcoma in mice *J Babol Univ Med Sci* **14** 77–83

- [12] Kazemi S, Asgary S, Moshtaghian J, Rafieian M, Adelnia A and Shamsi F 2010 Liver-protective effects of hydroalcoholic extract of *allium hirtifolium* boiss. In rats with alloxan-induced diabetes mellitus *ARYA Atheroscler* **6** 11–15
- [13] Khosravi-Boroujeni H, Mohammadifard N, Sarrafzadegan N, Sajjadi F, Maghroun M and Khosravi A 2012 Potato consumption and cardiovascular disease risk factors among Iranian population *Int J Food Sci Nutr* **63** 913–920
- [14] Shirzad H, Shahrani M and Rafieian-Kopaei M 2009 Comparison of morphine and tramadol effects on phagocytic activity of mice peritoneal phagocytes in vivo. *Int Immunopharmacol* **9** 968–970
- [15] Rafieian-Kopaei M and Baradaran A 2013 Teucrium polium and kidney *J Ren Inj Prev* **2** 3–4
- [16] Baradaran A and Rafieian-Kopaei M 2013 Histopathological study of the combination of metformin and garlic juice for the attenuation of gentamicin renal toxicity in rat's *J Ren Inj Prev* **2** 15–21
- [17] Kandowanko N, Solang M and Ahmad J 2011 *Kajian Etnobotani Tanaman Obat Oleh Masyarakat Kabupaten Bonebolango Provinsi Gorontalo* Laporan penelitian pengembangan program studi Jurusan Biologi Fakultas MIPA Universitas Negeri Gorontalo
- [18] Lemlit Universitas Negeri Gorontalo 2012 *Riset khusus eksplorasi pengetahuan lokal etnomedisin dan tumbuhan obat di indonesia berbasis komunitas* Unpublished
- [19] Katili, Abubakar Sidik, Zainuddin Latare and Chandra Naouko 2015 Inventory of medicinal plants and local wisdom of Bune Ethnic in utilizing plant medicine in Pinogu, Bonebolango District, Gorontalo Province *Prosiding Seminar Nasional Masyarakat Biodiversitas Indonesia* **1** 1
- [20] Saraswati Henny 2012 *Rancang Bangun Sistem Informasi Tumbuhan Obat* Unpublished
- [21] Syarif, Pudjiati, Bambang Suryotomo and Hayati Soeprapto 2015 Diskripsi dan manfaat tanaman obat di pedesaan sebagai upaya pemberdayaan apotik hidup (studi kasus di Kecamatan Wonokerto) *Pena Jurnal Ilmu Pengetahuan Dan Teknologi* **21** 1
- [22] Santhyami, Sulistyawati E and Endah Sulistyawati 2009 Etnobotani Tumbuhan Obat oleh Masyarakat Adat Kampung Dukuh, Garut, Jawa Barat *Prosiding Seminar Nasional Etnobotani IV LIPI Cibinong*
- [23] Al-Susanti 2007 *Studi Etnobotani Tanaman Obat Pada Masyarakat Suku Samin di dusun Jepang, Desa Margomulyo, Kecamatan Margomulyo, Kabupaten Bojonegoro* Department of Biology Universitas Muhammadiyah Malang
- [24] Singh R 2015 Medicinal Plants: A Review *Journal of Plant Sciences. Special Issue: Medicinal Plants* **3** 1 50-55
- [25] Dubey Akshita, Amisha Jain and Aditi Mantri 2015 Comparative study: Agile VS Waterfall *International Journal of engineering science and research technology (IJESRT)* **4** 3 70 - 75
- [26] Badurowicz M 2011 *MVC Architectural Pattern in Web Applications, Actual Problems of Economics* 305-309