

# Proses Terbit Jurnal

## Latar Belakang

Publikasi di jurnal Internasional bereputasi ini di dasari keinginan meningkatkan level jurnal capaian yang sebelumnya telah dilakukan pada jurnal terindeks Scopus Q3 H-indeks 15 (2017).

Upaya dilakukan dengan memilih Journal Processes pada penerbit MDPI dan telah terindeks Thomson (Web of Science) & Scopus Q2, H-indeks 20 (2020). Dengan harapan jurnal berikutnya adalah terindeks Thomson dan Scopus Q1 sehingga aktifitas publikasi jurnal hanya berada pada segmen kuartil atau Q1, Q2, dan Q3.

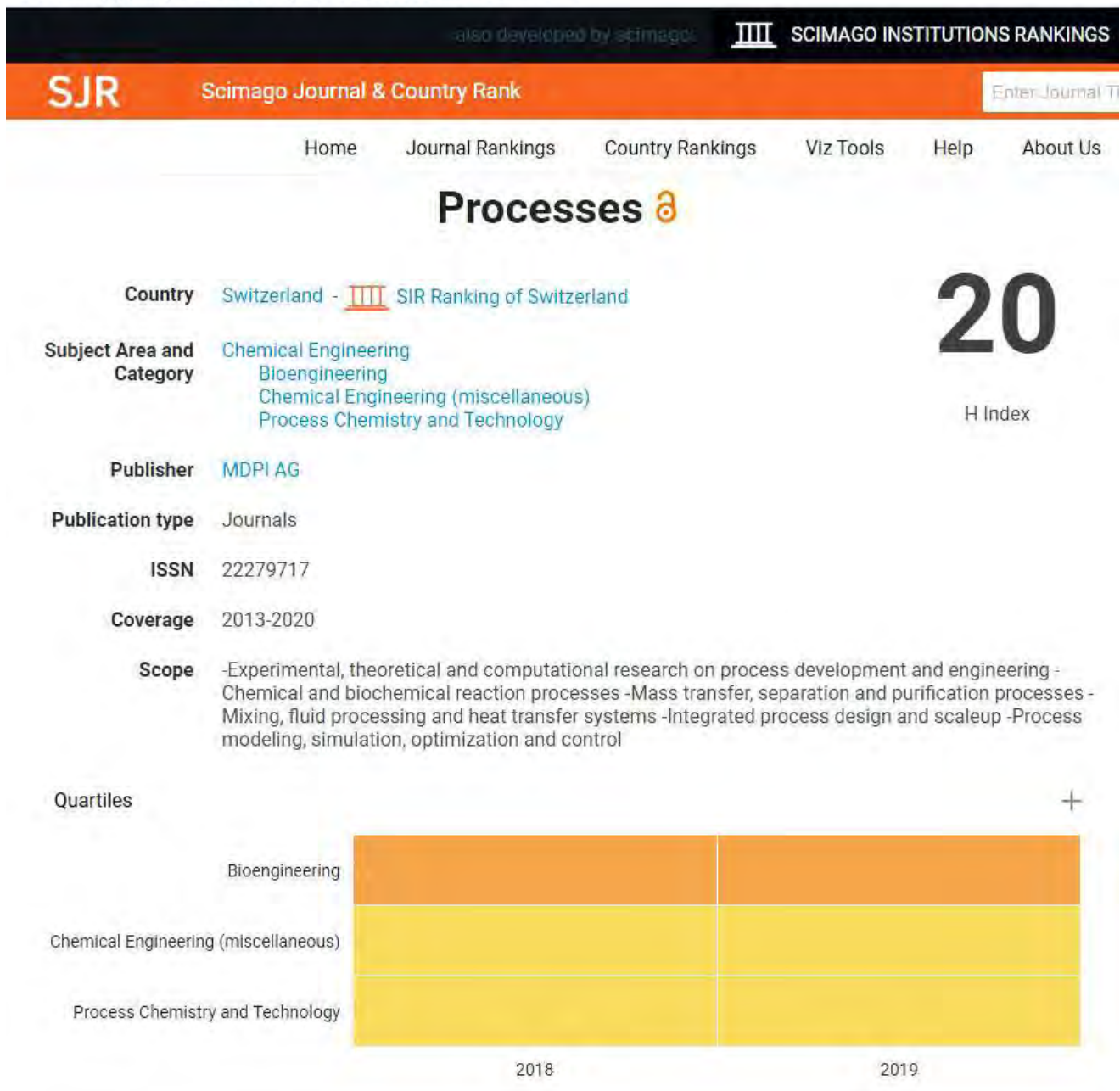
Berdasarkan bimbingan pemandu profesional, dan topik manuskrip maka dari sisi scope bersesuaian dengan JOURNAL PROCESSES.

Tahapan selanjutnya adalah menelusuri :

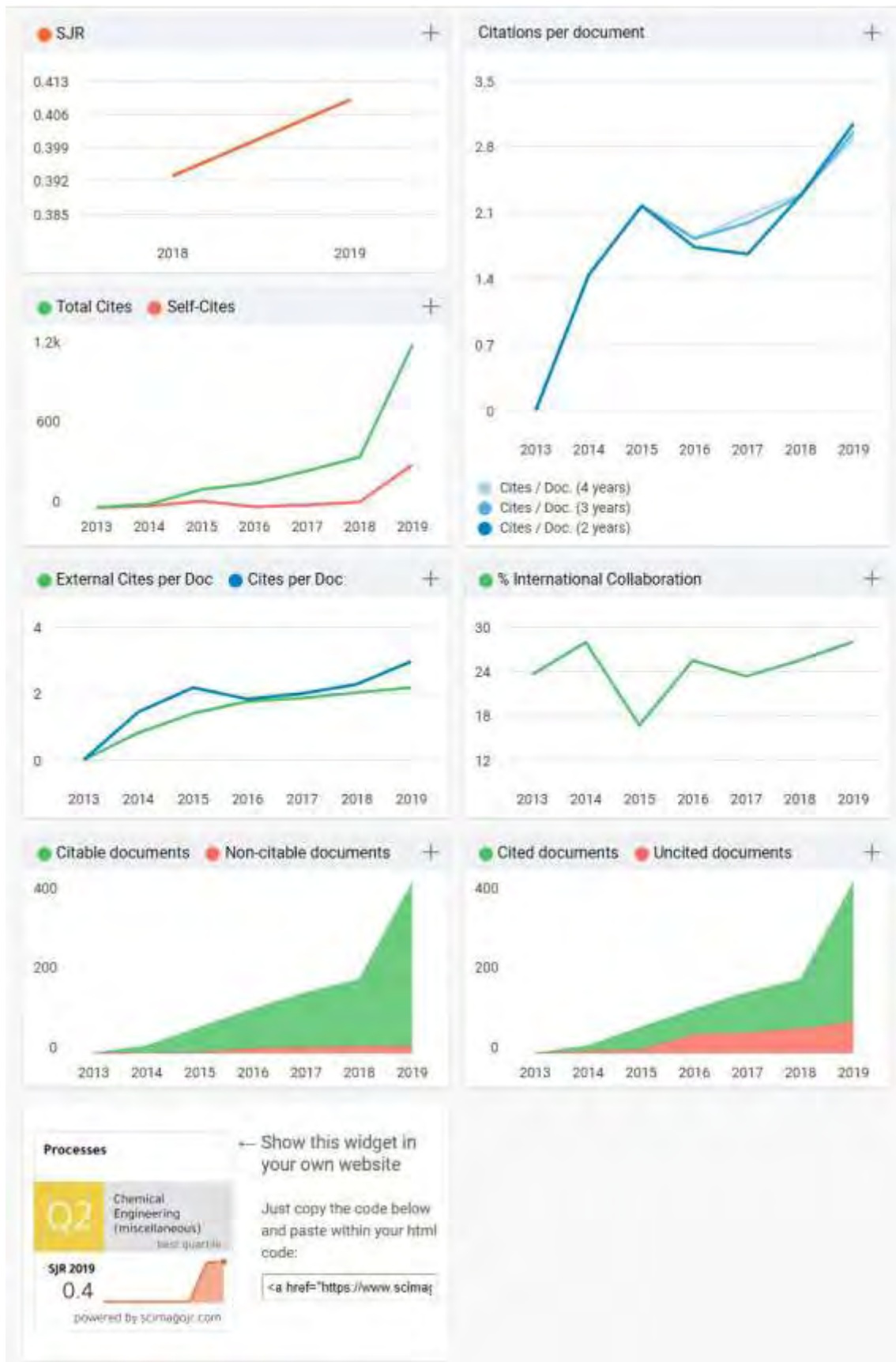
1. Menelusuri peringkat jurnal di SJR,
2. Menelusuri data indeks jurnal di scopus,
3. Menelusuri Laman jurnal dan buat akun,
4. Proses submit dengan terlebih dahulu melengkapi data, koneksi laman orchid author, memahami persyaratan lain seperti besaran article processing charge (APC).

Penelusuran di laman SJR, melihat indeks dan kuartil.

scimagojr.com/journalsearch.php?q=21100838131&tip=sid&clean=0



## Lanjutan Statistik Jurnal Processes



Author search Sources


## ISSN

Find sources

1 result

[Download Scopus Source List](#) [Learn more about Scopus Source List](#)

☐ All

View metrics for year: 2019 

Source Title (Medline sourced journals are indicated in Green)	E-ISSN	Active or Inactive	Coverage	2018 Cite Score	Source Title	Publisher's Name	Publisher's Country/Territory	Top level: Physical Sciences	1500 Chemical Engineering	2200 Engineering	2300 Engineering Sciences
31143											
31144											
31145											
31146											
31147											
31148											
31149											
31150	Procesamiento de Lenguaje Nat 1989/553	Active	2011-ongoing	0.64	Journal	Sociedad Española - Spain		Physical Sciences			
31151	Process Biochemistry	Active	1979-ongoing, 1973-153.06		Journal	Elsevier Applied Sci United Kingdom		Physical Sciences	Chemical Engineering		
31152	Process Control and Quality	Inactive	1990-1997		Journal	Elsevier BV Netherlands		Physical Sciences		Engineering	
31153	Process Control News (for the Pulp and Paper Industry)	Inactive	1998-2002		Trade Jour	Fadum Enterprises, United States		Physical Sciences	Chemical Engineering	Engineering	
31154	Process Engineering	Inactive	1999-2011, 1995-1996, 1978-1993		Trade Jour	Centaur Publishing United Kingdom		Physical Sciences	Chemical Engineering		
31155	Process Metallurgy	Inactive	2002, 1999-2000		Book Ser	Elsevier BV Netherlands		Physical Sciences		Engineering	
31156	Process Safety and Environment 17443598	Active	1990-ongoing	0.60	Journal	Institution of Chemical Engineers United Kingdom		Physical Sciences	Chemical Engineering	Engineering	En
31157	Process Safety Progress 15475913	Active	1993-ongoing	0.54	Journal	John Wiley & Sons United States		Physical Sciences	Chemical Engineering	Engineering	
31158	Process Systems Engineering	Inactive	2006-2006, 1999-2002		Book Ser	Academic Press Inc United States		Physical Sciences		Engineering	
31159	Process Technol	Inactive	1996, 1985, 1972-1973		Book Ser	Elsevier BV Netherlands		Physical Sciences	Chemical Engineering	Engineering	
31160	Processes 22279117	Active	2017-ongoing	2.05	Journal	MDPI AG Switzerland		Physical Sciences	Chemical Engineering		
31161	Processing and Application of 124051034	Active	2014-ongoing	1.14	Journal	University of Novi Sad Serbia		Physical Sciences			

**ACUAN BIDANG KUANTIL**

## Proses submit manuskrip di laman jurnal setelah punya akun

← → ↺ susy.mdpi.com/user/manuscripts/upload/3a2d061dcd99016a93c79156... 🔍 ☆ 📄 🚫 ⚙️ 🏠 🌐 🧩 🔄

MDPI Journals A-Z Information & Guidelines Initiatives About muhtahir@ung.ac.id My Profile Logout Submit

▼ User Menu ⓘ

■ Home

■ Manage Accounts

■ Change Password

■ Edit Profile

■ Logout

▼ Submissions Menu ⓘ

■ **Submit Manuscript**

■ Display Submitted Manuscripts

■ Display Co-Authored Manuscripts

■ English Editing

■ Discount Vouchers

■ Invoices

■ LaTeX Word Count

■ Help

▼ Reviewers Menu ⓘ

■ Volunteer Preferences

### New Submission

#### New Submission

\* Used template? ☐ Yes ☐ No

Please confirm you have used the MDPI journal template for your submission. You are encouraged to use the journal template to prepare the manuscript. You can use [MDPI LaTeX templates](#) and Microsoft Word templates are available on the individual journals' [Instructions for Authors](#) pages. The submission system will extract and pre-fill manuscript and authors' information from the files you upload.

\* Manuscript (Word/ZIP)  No file chosen

Please only upload the main text file. Do not add the supplementary file into the compressed package.

\* denotes required fields.

## Submit manuskrip berdasarkan template yang disediakan

MDPI Journals A-Z Information & Guidelines Initiatives About

muhtahir@ung.ac.id My Profile

User Menu

Home

Manage Accounts

Change Password

Edit Profile

Logout

Submissions Menu

Submit Manuscript

Display Submitted Manuscripts

Display Co-Authored Manuscripts

English Editing

Discount Vouchers

Invoices

LaTeX Word Count

Help

Reviewers Menu

Volunteer Preferences

Manuscript ID

Status

DOI

Publication Certificate

Website Links

Article type

Title

Journal

Volume

Issue

Section

Special Issue

Abstract

processes-685112

Website online

10.3390/pr8020204

Download Publication Certificate (PDF)

[Abstract](#) [HTML version](#) [PDF version](#) [Manuscript](#)

Article

Performance of Smokehouse Designed for Smoking Fish with the Indirect Method

Processes

8

2

Green Processes

Emerging Technologies for Biorefining, Food and Environmental Applications

Recently, studies about smoked food tend to identify harmful compounds that potentially appear within the smoking process. The process, conducted in a smokehouse, closely corresponds with the design and method. This paper presents a smokehouse designed by integrating a biomass furnace, a heat exchanger, a cyclone separator, and a smoking chamber. The design target was to obtain a smoking system that produces clean smoked fish. The design and construction phase and the performance tests phase are discussed in this paper. The energy source used was coconut shells, fed into the furnace at predetermined amounts, to achieve the desired temperature. The performance tests were done using skipjack fish, whose weight ranged from 0.7–1.0 kg/head. The results showed that the smoking system was able to complete the smoking process of the fish in 13 h with 20.1% moisture reduction. The temperature of the smoking chamber varied from 70 °C to 108 °C and the internal fish temperature during the cooking phase ranged from 71 °C to 80 °C. The temperature performance was supported by a heat exchanger with an effectiveness of 0.63 and a cyclone separator, which channeled the smoke–heat flow, separated fly ash with particle sizes between 0.2–600 µm and tar. Based on the test results, the indirect smoking system developed and tested in this study is shown to be able to perform the smoking fish process satisfactorily and produce clean smoked fish.

Keywords

integrated design; smoking system; fly ash separation; smoked fish

 **data**

Data is of paramount importance to scientific progress, yet most research data drowns in supplementary files or remains private. Enhancing the transparency of the data processes will help to render scientific research results reproducible and thus more accountable. Co-submit your methodical data processing articles or data descriptors for a linked data set in *Data* journal to make your data more citable and reliable.

- Deposit your data set in an online repository, obtain the DOI number or link to the deposited data set.
- Download and use the Microsoft Word template or LaTeX template to prepare your data article.
- Upload and send your data article to the *Data* journal here.

[Submit To Data](#)



# Melengkapi data manuskrip

## Author Information

Submitting Author	Wahyu Caesarendra
Corresponding Authors	Muh. Tahir, Wahyu Caesarendra
Author #1	Muh. Tahir
Affiliation	1. Department of Food Science and Technology, Universitas Negeri Gorontalo, Kota Gorontalo 96128, Indonesia
E-Mail	muhtahir@ung.ac.id
Author #2	S. Salengke
Affiliation	2. Department of Agricultural Engineering, Hasanuddin University, Makassar 90245, Indonesia
E-Mail	ssalengke@yahoo.co.id
Author #3	Mursalim
Affiliation	2. Department of Agricultural Engineering, Hasanuddin University, Makassar 90245, Indonesia
E-Mail	mursalim61@unhas.ac.id
Author #4	Metusalach
Affiliation	3. Department of Fisheries Science, Hasanuddin University, Makassar 90245, Indonesia
E-Mail	mminanga@hotmail.com
Author #5	Wahyu Caesarendra
Affiliation	4. Department of Mechanical Engineering, Diponegoro University, Jl. Prof.H. Soedarto S.H., Semarang 50275, Indonesia 5. Faculty of Integrated Technologies, Universiti Brunei Darussalam, Jalan Tungku Link, Gadong BE1410, Brunei
E-Mail	wahyu.caesarendra@ubd.edu.bn

## Informasi manuskrip dan proses reviewnya

### Manuscript Information

Received Date	18 December 2019
Revised Date	23 January 2020
Accepted Date	27 January 2020
Published Date	6 February 2020
Submission to First Decision (Days)	15
Submission to Publication (Days)	49
Round of Revision	2
Size of PDF	1891 KB
Word Count	5057
Page Count	12
Figure Count	5
Table Count	2
Reference Count	26

### Editor Decision

Decision	Accept in current form
Decision Date	27 January 2020

### Review Report

Reviewer 1	<a href="#">Review Report (Round 1)</a>	
Reviewer 2	<a href="#">Review Report (Round 1)</a>	<a href="#">Review Report (Round 2)</a>
Reviewer 3	<a href="#">Review Report (Round 1)</a>	<a href="#">Review Report (Round 2)</a>

### APC information

Journal APC:	1,200.00 CHF
--------------	--------------

# Proses review round 1, Reviewer 1 & Respon Author

## Authors' Responses to Reviewer's Comments (Reviewer 1)

Author's Notes Dear reviewer,

Thank you for giving us the positive comment and suggestion to improve the manuscript.

The paper presents performance of smokehouse designed for smoking fish with indirect method.

**Point 1:** An interesting theme that can be developed with the identification and quantification of the volatile compounds that each technique leaves in the fish.

**Response 1:** The theme indeed is an old one and up to now the studies of smokehouse design that adheres to primary smoke appear to be few. In recent studies, one of which is more towards the identification and quantification of volatile compounds left in fish so that with this design, it is very possible for further studies in the same theme. One of them to be measured within the experiment is phenol with the concentration of 61,32  $\mu\text{g/g}$  and undesired PAH compound; *benzo[a]pyrene* is 1,29  $\mu\text{g/kg}$ . *Benzo[a]pyrene* is a harmful compound that given notice from FAO/WHO to control less than 2,0  $\mu\text{g/kg}$ . Unfortunately that these data projected to present on other paper as nutrition aspect.

**Point 2:** Maybe is a very technical theme, so more than 60 % of the references are over than 5 years old!

**Response 2:** I am sorry about the references correlated with studies for smokehouse that adheres to primary smoke and it was very rare. I also have updated some references to make it better and it was done based on your suggestion to improve the introduction section. Please kindly check in line 86, 238.

**Point 3:** Specific comments.

**Response 3:** All has been corrected. Because of proof-reading service, the line number has changed. Please kindly check in column 'Corrected in'.

Line	Where is	Should be	Corrected in
28	70oC to 108oC	70 °C to 108 °C	Line 27
29	71oC to 80oC	71 °C to 80 °C	Line 28
32	0.2-600 $\mu\text{m}$	0.2-600 mm	Line 30
153	KX-2*0.4mm.	KX-2*0.4 mm.	Line 151
158	0-9999kWh for the voltage of 80-260VAC	0-9999 kWh for the voltage of 80-260 V AC	Line 156
Fig 4	300 gr; 400 gr; 500 gr	300 g; 400 g; 500 g	Line 192, Fig 4
309	0.3-300mm	0.3-300 mm	Line 300
311	0.2-5mm, cyclone fly ash for 2-100mm, and grate fire ash for 10-30.000mm	0.2-5 mm, cyclone fly ash for 2-100 mm, and grate fire ash for 10-30.000 mm	Line 302
315	0.2-600mm	0.2-600 mm	Line 304

These responses are refer to the revised manuscript entitled "processes-685112 proof-reading revised for reviewer 1.docx" as attached below.

Thank you very much.

Report Notes

# Proses review round 1, Reviewer 1 & Respon Author

## Review Report Form

- English language and style
- ☐ Extensive editing of English language and style required
  - ☐ Moderate English changes required
  - ☐ English language and style are fine/minor spell check required
  - ☒ I don't feel qualified to judge about the English language and style

	Yes	Can be improved	Must be improved	Not applicable
Does the introduction provide sufficient background and include all relevant references?	<input type="checkbox"/>	<input checked="" type="checkbox"/>	<input type="checkbox"/>	<input type="checkbox"/>
Is the research design appropriate?	<input checked="" type="checkbox"/>	<input type="checkbox"/>	<input type="checkbox"/>	<input type="checkbox"/>
Are the methods adequately described?	<input checked="" type="checkbox"/>	<input type="checkbox"/>	<input type="checkbox"/>	<input type="checkbox"/>
Are the results clearly presented?	<input checked="" type="checkbox"/>	<input type="checkbox"/>	<input type="checkbox"/>	<input type="checkbox"/>
Are the conclusions supported by the results?	<input checked="" type="checkbox"/>	<input type="checkbox"/>	<input type="checkbox"/>	<input type="checkbox"/>

Comments and Suggestions for Authors

An interesting theme that can be developed with the identification and quantification of the volatile compounds that each technique leaves in the fish

Maybe is a very technical theme, so more than 60 % of the references is over than 5 years old

peer-review-5978273.v1.docx

Submission Date 18 December 2019

Date of this review 27 Dec 2019 13:49:37

## Proses review round 1, Reviewer 2 & Respon Author

### Authors' Responses to Reviewer's Comments (Reviewer 2)

Author's Notes Dear reviewer,

Thank you for giving us the positive comment and suggestion to improve the manuscript.

The paper presents performance of smokehouse designed for smoking fish with indirect method.

**Point 1:** The whole manuscript needs proof-reading for grammatical errors.

**Response 1:** The whole manuscript has been processed with proof-reading. I want and hope that the manuscript has a standard in grammatical to fulfil the requirement for publishing.

**Point 2:** The article is quite lengthy. It should be shortened to avoid repetitions. It is hard to make a direct connection between some of the conclusions, discussion, and results.

**Response 2:** I have read the article over and over, and found that several sentences have the same meaning. I have omitted it and hope that the whole article to become shorter. some pictures seem to take up space in this article so that the number of pages does not decrease. Several repetitions in the conclusion, results and discussion sections have been removed. Please kindly check in line 267-268, 313-314 and 321-322, 325-326, 328, 330-331, 339-340 (conclusions section), and also line 351-352 (acknowledgments).

Thank you very much.

These responses are refer to the revised manuscript entitled "processes-685112 proof-reading revised for reviewer 2.docx" as attached below.

Author's Notes File Report Notes

# Proses review round 1, Reviewer 2 & Respon Author

## Review Report Form

- English language and style
- ☒ Extensive editing of English language and style required
  - ☐ Moderate English changes required
  - ☐ English language and style are fine/minor spell check required
  - ☐ I don't feel qualified to judge about the English language and style

	Yes	Can be improved	Must be improved	Not applicable
Does the introduction provide sufficient background and include all relevant references?	<input type="radio"/>	<input type="radio"/>	<input checked="" type="radio"/>	<input type="radio"/>
Is the research design appropriate?	<input type="radio"/>	<input type="radio"/>	<input checked="" type="radio"/>	<input type="radio"/>
Are the methods adequately described?	<input checked="" type="radio"/>	<input type="radio"/>	<input type="radio"/>	<input type="radio"/>
Are the results clearly presented?	<input type="radio"/>	<input checked="" type="radio"/>	<input type="radio"/>	<input type="radio"/>
Are the conclusions supported by the results?	<input type="radio"/>	<input type="radio"/>	<input checked="" type="radio"/>	<input type="radio"/>

Comments and Suggestions for Authors: The whole manuscript needs proof-reading for grammatical errors. The article is quite lengthy. It should be shortened to avoid repetitions. It is hard to make a direct connection between some of the conclusions, discussion, and the results.

Submission Date: 18 December 2019

Date of this review: 30 Dec 2019 06:53:21

## Proses review round 2, Reviewer 2 & Respon Author

### Authors' Responses to Reviewer's Comments (Reviewer 2)

#### Author's Notes

#### Response to Reviewer 2 Comments

Dear reviewer,

Thank you for giving us the positive comment and suggestion to improve the manuscript.

The paper presents performance of smokehouse designed for smoking fish with indirect method.

**Point 1:** The updated version is much better but with a few grammatical errors.

**Response 1:** Unfortunately, there is no tracking from the results of the intended reviews. A few grammatical errors have been revised throughout the entire manuscript. Please kindly check in line 3, 23, 52, 73, 75, 86 (Table 1), 91, 92, 99-100, 109, 112, 125, 131, 139, 144-145, 152-154, 156-157, 164, 166-167, 169-170, 229, 235, 238, 253-254, 259, 261, 275, 286, 298-299, 307, 315, 319-322, 325-326, 333, 337, 344, 351, 354, 362, 365-367, 369, 386, 397, and 408.

**Point 2:** Are the results clearly presented? (Can be improved).

**Response 2:** I have improved it for several aspects. I have omitted the phrase like repetition in line 223-228, add a phrase in line 242-249, to describe some parameters of quality from smoked fish that resulted through the smokehouse design. Also, I added a phrase in line 264-266, to describe the capacity of fish smoking in one batch, related to the chart line in figure 4, and the possibility of fish smoking for the maximum capacity.

**Point 3:** Are the conclusions supported by the results? (Can be improved).

**Response 3:** In the conclusion section, I have added sentences to make a relationship between results and its conclusion. Please kindly check in line 351-354, besides of connected the performance of the temperature with the capacity of fish smoking, it also connected the moisture of fish resulted as a quality required to fulfill the standard stated by the SNI i.e. < 60%.

## Proses review round 2, Reviewer 2 & Respon Author

### Review Report Form

- English language and style
- ☐ Extensive editing of English language and style required
  - ☐ Moderate English changes required
  - ☒ English language and style are fine/minor spell check required
  - ☐ I don't feel qualified to judge about the English language and style

	Yes	Can be improved	Must be improved	Not applicable
Does the introduction provide sufficient background and include all relevant references?	<input checked="" type="checkbox"/>	<input type="checkbox"/>	<input type="checkbox"/>	<input type="checkbox"/>
Is the research design appropriate?	<input checked="" type="checkbox"/>	<input type="checkbox"/>	<input type="checkbox"/>	<input type="checkbox"/>
Are the methods adequately described?	<input checked="" type="checkbox"/>	<input type="checkbox"/>	<input type="checkbox"/>	<input type="checkbox"/>
Are the results clearly presented?	<input type="checkbox"/>	<input checked="" type="checkbox"/>	<input type="checkbox"/>	<input type="checkbox"/>
Are the conclusions supported by the results?	<input type="checkbox"/>	<input checked="" type="checkbox"/>	<input type="checkbox"/>	<input type="checkbox"/>

Comments and Suggestions for Authors    The updated version is much better but with a few grammatical errors

Submission Date    18 December 2019  
 Date of this review    16 Jan 2020 20:53:54

# Proses review round 1, Reviewer 3 & Respon Author

## Authors' Responses to Reviewer's Comments (Reviewer 3)

Author's Notes Dear reviewer,

Thank you for giving us the positive comment and suggestion to improve the manuscript.

The paper presents performance of smokehouse designed for smoking fish with indirect method.

Point 1: Authors must improve English writing.

**Response 1:** This article has been prepared through a proof-reading service, thank you for your suggestion to make it better.

Point 2: Do not use first person ("I", "we", "us", etc) in formal writing.

**Response 2:** The word "us" was found in the article and I have omitted it. Please kindly check in line 43.

Point 3: Abstract says "... study can produce healthier smoked fish compared to the conventional ..." how was this measured? To conclude this, parameters related to nutritional composition of the fish must be measured and compared to a traditional smoked fish.

**Response 3:** I am sorry with the statement that it was as un measurement something. It has been rephrased as "Based on the test results, the indirect smoking system developed and tested in this study is shown to be able to perform the smoking fish process satisfactorily and produce clean smoked fish". It implies the impact of the heat exchanger and cyclon separator within this design. Please kindly check in line 30-33.

Point 4: It must be "foodborne" instead of "food borne"

**Response 4:** It has changed to "foodborne". Please kindly check line 71.

Point 5: Any bacteria must be written in *italics*.

**Response 5:** There were two names of bacteria found and it has written in *italics*. Please kindly check in line 71.

Point 6: Figures must be mentioned in order, in this case, Figure 3 is mentioned in the text before Figure 1, this must be corrected.

**Response 6:** The word "Figure 3" was omitted to mention the number sequentially throughout the entire text. The correction has done as shown in line 74-76.

Point 7: Add the aim of the study at the end of the introduction.

**Response 7:** It is already done. Thank you very much and please kindly check in line 104-106

## Proses review round 1, Reviewer 3 & Respon Author

**Point 8:** The authors must specify the type and grade of steel and aluminium used to construct the smokehouse.

**Response 8:** For this prototype and the initial measurement purposes, the smokehouse was built of mild steel and aluminum alloy which has food-grade specifications. A phrase has been added as shown in line 113-116.

**Point 9:** What is the maximum capacity of the smokehouse and what is the minimum load it can handle?

**Response 9:** The maximum capacity of the smokehouse is 50 kg of fish. Base the measurement, the difference of temperature level between the inner and outer in the smoking chamber was small so that the authors suspect the possibility of doubling the smoking cylinder in series. Therefore, the capacity can be increased to 100 kg. The minimum load that can be handled is about 20 kg with consideration of the level of fuel efficiency and electric power for the blower.

**Point 10:** How was the "good quality" measured in the samples used?

**Response 10:** The quality of smoked fish produced within the experiment is good enough and for the detailed will be presented on other paper. Some of the parameter measured were moisture, protein, fat and ash for 52.9%, 40.11%, 8.5% and 4.3% respectively. For the same smoked fish, measured by Isamu et al., 2012 were 65.6%, 29.7%, 2.6% and 1.4%. Fuentes et al., 2010 with the same family of smoked fish were 58.6-66.2%, 15.4-31.5%, 1.4-3.8% and 6.1-7.5% for the moisture, protein, fat and ash. The contain of phenol within the product was 61.32 µg/g while the harmful compound of benzo(a)pyrene was 1.29 µg/kg (< 2.0 µg/kg as a limit in food).

**Point 11:** What is the x-axis of Figure 3?

**Response 11:** The x-axis is the time period (hour). Figure 3 has been corrected.

**Point 12:** Add label Calculations to design the smokehouse must be presented – Momentum, mass and heat transfer calculations. This is apart and previous to the measurements done to show that it worked.

**Response 12:** As the same as the nutrition aspect, all calculation in the design of smokehouse will present on other paper. For example, the separation process of the ash particle used within this design was presented detail in "Design and Performance of a Cyclone Separator Integrated with Heat Exchanger for Smoked Fish Production" that it has been published. I try to make a narration about the performance of this indirect smokehouse accordingly with the name of the journal "Processes".

**Point 13:** There are two different "Table 1"

**Response 13:** It has been corrected for "Table 2". Please kindly check in line 264 & 269.

**Point 14:** The conclusions are too long.

**Response 14:** I have been made it more shortly, more simply by prevent repetitions and improve it by a proof-reading service. Several repetitions in the conclusion, results and discussion sections have been removed. Please kindly check in line 319-320, 323-324, 326-329, 337-338 (conclusions section).

Thank you very much.

These responses are refer to the revised manuscript entitled "processes-685112 proof-reading revised for reviewer 3.docx" as attached below.

# Proses review round 1, Reviewer 3 & Respon Author

## Review Report Form

- English language and style
- ☒ Extensive editing of English language and style required
  - ☐ Moderate English changes required
  - ☐ English language and style are fine/minor spell check required
  - ☐ I don't feel qualified to judge about the English language and style

	Yes	Can be improved	Must be improved	Not applicable
Does the introduction provide sufficient background and include all relevant references?	<input type="checkbox"/>	<input checked="" type="checkbox"/>	<input type="checkbox"/>	<input type="checkbox"/>
Is the research design appropriate?	<input type="checkbox"/>	<input type="checkbox"/>	<input checked="" type="checkbox"/>	<input type="checkbox"/>
Are the methods adequately described?	<input type="checkbox"/>	<input type="checkbox"/>	<input checked="" type="checkbox"/>	<input type="checkbox"/>
Are the results clearly presented?	<input type="checkbox"/>	<input type="checkbox"/>	<input checked="" type="checkbox"/>	<input type="checkbox"/>
Are the conclusions supported by the results?	<input type="checkbox"/>	<input type="checkbox"/>	<input checked="" type="checkbox"/>	<input type="checkbox"/>

Comments and Suggestions for Authors

Authors must improve English writing Do not use first person ("I", "we", "us", etc) in formal writing Abstract says "... study can produce healthier smoked fish compared to the conventional ..." how was this measured? To conclude this, parameters related to nutritional composition of the fish must be measured and compared to a traditional smoked fish It must be "foodborne" instead of "food borne" Any bacteria must be written in *italics* Figures must be mentioned in order, in this case Figure 3 is mentioned in the text before Figure 1, this must be corrected Add the aim of the study at the end of the introduction The authors must specify the type and grade of steel and aluminium used to construct the smokehouse What is the maximum capacity of the smokehouse and what is the minimum load it can handle? How was the "good quality" measured in the samples used? What is the x-axis of Figure 3? Add label Calculations to design the smokehouse must be presented – Momentum, mass and heat transfer calculations. This is apart and previous to the measurements done to show that it worked There are two different "Table 1" The conclusions are too long

Submission Date 18 December 2019

Date of this review 02 Jan 2020 09:16:36

## Proses review round 2, Reviewer 3 & Respon Author

### Authors' Responses to Reviewer's Comments (Reviewer 3)

#### Author's Notes

#### Response to Reviewer 3 Comments

Dear reviewer,

Thank you for giving us the positive comment and suggestion to improve the manuscript.

The paper presents performance of smokehouse designed for smoking fish with indirect method.

**Point 1:** Write the aim in past tense – “The aim of this study **was** ...” I suggest modifying the aim and use “to develop” instead of “to obtain”.

**Response 1:** Thank you, I have revised based your suggestion. Please kindly check in line 103-105.

**Point 2:** Please add the capacity to the manuscript.

**Response 2:** I have added a phrase in line 133-135, to describe the capacity of fish smoking in one batch and the possibility of full load for the maximum capacity of the smoking process. (This phrase added, also to improve the method section).

**Point 3:** Add the explanation about the “good quality” criteria of the samples in the manuscript.

**Response 3:** I am sorry to have a miswriting “good quality” in line 143. I have revised it to become “fresh quality”. As a raw material, “fresh quality” of skipjack fish is like a “good quality”. It also describes the principle of “Garbage in, garbage out” in food production.

In line 242-249, a phrase has been added to explain some parameters of quality from smoked fish that resulted through the smokehouse design. Added a sentence to describe a correlation between moisture and protein, and the slowly increased temperature to support the yield of protein. Benzo[a]pyrene as a harmful compound in high concentration that regulated in each country to make it lower than 2 ppm, also implied through these lines.

Author's Notes File

[Report Notes](#)

## Proses review round 2, Reviewer 3 & Respon Author

### Review Report Form

- English language and style
- ☐ Extensive editing of English language and style required
  - ☐ Moderate English changes required
  - ☒ English language and style are fine/minor spell check required
  - ☐ I don't feel qualified to judge about the English language and style

	Yes	Can be improved	Must be improved	Not applicable
Does the introduction provide sufficient background and include all relevant references?	<input checked="" type="radio"/>	<input type="radio"/>	<input type="radio"/>	<input type="radio"/>
Is the research design appropriate?	<input type="radio"/>	<input checked="" type="radio"/>	<input type="radio"/>	<input type="radio"/>
Are the methods adequately described?	<input type="radio"/>	<input checked="" type="radio"/>	<input type="radio"/>	<input type="radio"/>
Are the results clearly presented?	<input checked="" type="radio"/>	<input type="radio"/>	<input type="radio"/>	<input type="radio"/>
Are the conclusions supported by the results?	<input checked="" type="radio"/>	<input type="radio"/>	<input type="radio"/>	<input type="radio"/>

Comments and Suggestions for Authors: Write the aim in past tense – "The aim of this study **was** . " I suggest modifying the aim and use "to develop" instead of "to obtain" Please add the capacity to the manuscript Add the explanation about the "good quality" criteria of the samples in the manuscript

Submission Date: 18 December 2019

Date of this review: 17 Jan 2020 05:02:24

## Article

# Performance of Smokehouse Designed for Smoking Fish with the Indirect Method

Muh. Tahir <sup>1,\*</sup>, Sastri-Salengke <sup>2</sup>, Mursalim <sup>2</sup>, Metusalach <sup>3</sup>, and Wahyu Caesarendra <sup>4,5,\*</sup>

<sup>1</sup> Department of Food Science and Technology, Universitas Negeri Gorontalo, Kota Gorontalo 96128, Indonesia

<sup>2</sup> Department of Agricultural Engineering, Hasanuddin University, Makassar [post code 90245](#), Indonesia; [s-salengke@yahoo.com](mailto:s-salengke@yahoo.com) (S.S.); [mursalim61@unhas.ac.id](mailto:mursalim61@unhas.ac.id) (M.)

<sup>3</sup> Department of Fisheries Science, Hasanuddin University, Makassar [post code 90245](#), Indonesia; [mmminanga@hotmail.com](mailto:mmminanga@hotmail.com) (M.)

<sup>4</sup> Department of Mechanical Engineering, Diponegoro University, Jl. Prof.H.Soedarto S.H, Semarang 50275, Indonesia

<sup>5</sup> Faculty of Integrated Technologies, Universiti Brunei Darussalam, Jalan Tungku Link, Gadong BE1410, Brunei

\* Correspondence: [muhtahir@ung.ac.id](mailto:muhtahir@ung.ac.id) (M.T.); [wahyu.caesarendra@ubd.edu.bn](mailto:wahyu.caesarendra@ubd.edu.bn) (W.C.); Tel.: [+62-852-1111-7291](tel:+62-852-1111-7291) (Muh. Tahir)

Received: 18 December 2019; Accepted: 27 January 2020; Published: date

**Abstract:** Recently, studies about smoked food tend to identify harmful compounds that potentially appear within the smoking process. The process, conducted in a smokehouse, closely corresponds with the design and method. This paper presents a smokehouse designed by integrating a biomass furnace, a heat exchanger, a cyclone separator, and a smoking chamber. The design target was to obtain a smoking system that produces clean smoked fish. The design and construction phase and the performance tests phase are discussed in this paper. The energy source used was coconut shells, fed into the furnace at predetermined amounts, to achieve the desired temperature. The performance tests were done using skipjack fish, whose weight ranged from 0.7–1.0 kg/head. The results showed that the smoking system was able to complete the smoking process of the fish in 13 h with 20.1% moisture reduction. The temperature of the smoking chamber varied from 70 °C to 108 °C and the internal fish temperature during the cooking phase ranged from 71 °C to 80 °C. The temperature performance was supported by a heat exchanger with an effectiveness of 0.63 and a cyclone separator, which channeled the smoke–heat flow, separated fly ash with particle sizes between 0.2–600 µm and tar. Based on the test results, the indirect smoking system developed and tested in this study is shown to be able to perform the smoking fish process satisfactorily and produce clean smoked fish.

**Keywords:** integrated design; smoking system; fly ash separation; smoked fish

## 1. Introduction

Smoking is a process of imparting flavor to the fish or meat by the use of smoke. This process is done by using a device that can expose the surface of the fish or meat to smoke. Smoked products can be made not only from fish and meat, but also from a broad range of raw materials such as eggplants; some traditional cakes are also smoked. Different methods of smoking are also found around the world because smoking of foods is known to have developed along with various human cultures. In that context, the Torry kiln in 1939 brought a significant revolution to smokehouse design that provided a modern way of smoking foods such as meat [1].

In several designs and methods, smokehouses use natural air circulation and are often open to the environment. These characteristics have some weaknesses, such as longer smoking times due to

**Comment [M1]:** Please carefully check the accuracy of names and affiliations.

**Comment [M2]:** Please check the author's name, it different with susy. Please confirm which one is correct.

**Comment [M3]:** Please provide post code.

**Formatted:** Default Paragraph Font, Font: Palatino Linotype, 9 pt

**Comment [M4]:** Please provide post code.

**Formatted:** Default Paragraph Font, Font: Palatino Linotype, 9 pt, Font color: Auto

**Comment [M5]:** Please provide the owner of the telephone number.

low airflow that passes through the smoked product, especially in multiple chambers smokehouses. Therefore, the structural design of this slow airflow is generally arranged in vertical pathways to direct the updraft forces of combustion. The addition of any devices for certain purposes within the vertical pathways will affect the airflow velocity and circulation. One example is the use of wire mesh to reduce contaminants such as fly ash, fine charcoal, soot (black carbon), and tar fractions [2]. The airflow also moves in a certain path that tends to reach the product in the smoking chamber non-uniformly. In several references, smokehouse structures are categorized as long and short path smoke. The short path smoke structure is similar to natural air circulation in a simple structure of the smokehouse's chamber. The long path smoke structure generally uses a fan or blower to create a forced-air circulation within ducting, baffles or through multiple chambers [3].

The characteristics and quality of smoked products are affected by several factors, one of which is smoking temperature. The temperature of the smoking process is divided into three categories i.e., cold, warm, and hot. The cold smoking process is generally conducted at temperatures of 12–25 °C [4], or below 30 °C. This process can take several hours to several days depending on the product being processed [5]. In warm smoking, the process is carried out for 4–48 h at 23–45 °C [4,6] with a relative humidity of 70–80%. It results in smoke penetration and moisture reduction restricted mainly to the outer layers of the product. The smoked products resulted from this process are usually processed further by cooking or baking before being consumed [6]. In hot smoking, products are often heated at 40–50 °C for about 30 min without smoke which causes pre-drying on the surface of the product. The pre-heating is then followed by several stages of smoking with dense and hot smoke at temperatures reaching 85 °C [6] or 80–100 °C [5]. The process is maintained at this temperature for about 25 min, the internal temperature reaching 68–72 °C to make the product cooked without any further heating [6].

In the hot smoking process, three common and important factors that affect product characteristics and quality are salt, smoke, and heat. Proper salting and cooking are required to prevent the growth of foodborne pathogens such as *Clostridium botulinum*, *Escherichia coli*, and others [5,6]. Hot smoking of fish requires two sequential processes, i.e., smoking followed by cooking. The length of smoking depends on the desired flavor and moisture level of the smoked product, while the length of the cooking phase depends on the smoke temperature. In reference [7], the typical internal fish and oven temperatures during the smoking cycle can be used as a guideline. As the temperature within the smoking chamber increases slowly from the ambient temperature at the beginning of the smoking process to about 82.2 °C in 6 h, the internal temperature of fish also increases to about 60 °C. After about 6 to 8 h of smoking, the temperature within the smoking chamber must be increased to 85 °C or higher so that the internal temperature of fish reaches 68 to 72 °C. This peak cooking temperature should be held for at least 30 min to ensure that the fish is cooked thoroughly. Once the fish is cooked, the temperature can be decreased to about 40–50 °C to achieve the desired flavor and moisture level [7]. Through thermal treatment, the smoking process also increases the concentration of some basic nutrients and reduced the water, fat, and mineral contents in fish meat [8].

According to a brief literature study, the different smokehouse designs can be explained by their advantages and disadvantages, as presented in Table 1.

**Table 1.** A comparison of smokehouse designs.

Ref.	Brief Descriptives	Advantages	Disadvantages
[1]	Torry kiln smokehouse	- uses electric fans to drive smoke/airflow	- high electricity consumption
		- expandable room for smoking chamber meaning higher capacity	- relatively complex design
		- uses auxiliary heater (electric)	- multi-room burning consumes more biomass
			- high contamination of burning outcome

[2]	Modified traditional kiln using a charcoal filter	<ul style="list-style-type: none"><li>- uses a natural flow of smoke or hot airflow</li><li>- no need for electricity</li><li>- low contamination of burning residue</li></ul>	<ul style="list-style-type: none"><li>- relatively low capacity due to fish stacks resists the smoke flow.</li></ul>
[7]	Home smoker	<ul style="list-style-type: none"><li>- Portable smoker for home device</li></ul>	<ul style="list-style-type: none"><li>- relatively low capacity</li><li>- needs an independent heater to raise the temperature</li></ul>
[229]	Cross-flow fish smoker	<ul style="list-style-type: none"><li>- The direct smoking system utilizes upward force flow</li></ul>	<ul style="list-style-type: none"><li>- the residue of biomass burning contaminates the fish</li><li>- smoked fish has a high moisture</li></ul>
[2310]	Cabinet-type smoker	<ul style="list-style-type: none"><li>- Portable due to small size.</li></ul>	

The heat and smoke source is one of the key factors that affect the hot fish smoking process. Coconut shell, one source that is available locally, is a biomass fuel that can be used because it has a high heating value and good smoke quality (lower ash content) [4011]. However, the rate of feeding of the coconut shell into the combustion process needs to be determined accurately to achieve the desired temperature and smoke level. High temperatures can be achieved from the combustion process if the biomass is burned completely. On the other hand, high smoke density can be achieved through incomplete combustion of biomass. Another important fact in the smoking process is that the tar carried by smoke from the burned biomass tends to be high, as smoke density is high under incomplete combustion. The solid particles of fly ash, soot, and tar with the possibility of harmful compounds in the smoke must be separated by certain mechanisms and devices.

According to the literature studies above, it is important to develop a new design of smokehouse that uses biomass fuel as heat and smoke sources. It was also important to assess the performance characteristics of the smoking process within the design. The observed characteristics of smokehouse generally include temperature and humidity within the smoking chamber, the moisture of smoked product, heat exchanger effectiveness, and the overall collection efficiency of the fly ash, soot, and tar separation from the smoke reaching the smoking chamber. The study aimed to develop a smoking system capable of producing clean smoked fish.

2. Materials and Methods

2.1. Smokehouse

The smokehouse is the unit to be tested in a smoking process of skipjack fish with a certain amount of weight. The smokehouse is constructed of several units such as a furnace, heat exchanger, cyclone separator, and smoking chamber as an integrated design. Within this design, the smokehouse can be divided into the smoke-heat generator and the smoking chamber, as shown in Figure 1. For prototype purposes, smokehouses are constructed of mild steel and food-grade aluminum alloys. Aluminum sheets, sized 240 × 120 mm, with a thickness of 2.0 mm, are only intended to coat the inside of the smoking cylinder made of mild steel. Other constructions are made of mild steel and have an average thickness of 2.0 mm that are intended to run the initial measurement.

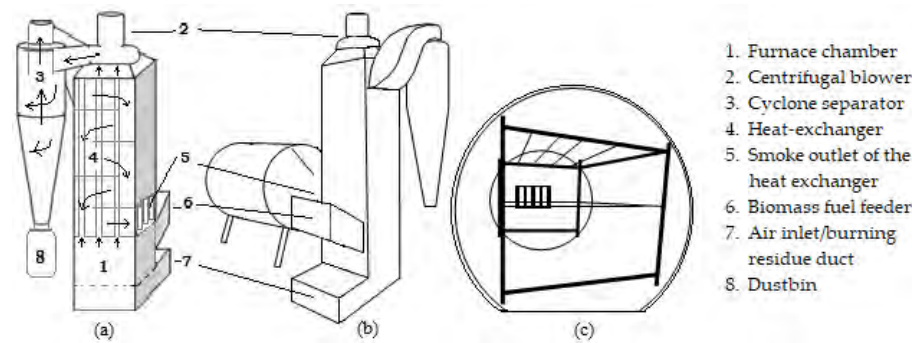
**Comment [M6]:** incorrect ref order, 22 detected after 8. You jumped the numbers in between.

Please carefully check the citation of the reference. Please reorder the references so that they appear in a sequential order, like "1,2,3~"

Please check the whole text and correct the them.

**Comment [M7]:** incorrect ref order, 23 detected after 8. You jumped the numbers in between.

**Comment [M8]:** incorrect ref order, 10 detected after 8. You jumped the numbers in between.



**Figure 1.** Smokehouse (a) schematic diagram of the smoke–heat generator; (b) integrated design; (c) the smoking chamber.

## 2.2. Smoke–Heat Generator

The smoke–heat generator is a construction integrating the units of a biomass furnace, heat exchanger, and cyclone separator (Figure 1a). The “shell and tube” heat exchanger type is used within this design, but to prevent misunderstanding with the ‘shell’ as in ‘coconut shell’, the term “heat exchanger inlet and outlet” is used in this research. The heat exchanger unit was built up from a bundle of 52 tubes, which connected the furnace chamber and the cyclone separator inlet through a centrifugal blower. The centrifugal blower with a capacity of 282 m<sup>3</sup>/h and 0.65 kPa was installed between the bundle of tubes and the cyclone separator inlet to provide the smoke–heat flow. The cyclone separator is a device used to separate the solid particles from the biomass combustion and flying within the smoke–air flow so that the smoke–heat flow that passes through the cyclone and enters the heat exchanger inlet is clean. The clean smoke–heat air is then reheated inside the heat exchanger wall with five baffles before reaching the fish hung in the smoking chamber.

## 2.3. Smoking Chamber and Fish Hanger

The smoking chamber is made of mild steel in the shape of a cylinder and overlaid inside with aluminum sheet. The dimension is 0.75 m in diameter with 0.9 m in horizontal length. The fish are hung on the hanger with a crossed arrangement to optimize the smoke–heat air contact. About 30 kg of skipjack fish were set up in the smoking chamber for one batch of the fish smoking process. A medium-load was set up to make easy the installment of the thermocouples and a stick for the smoke–air velocity measurement. The maximum-capacity with a narrow gap between fishes occurred when loaded for about 50 kg in one batch. The smoking chamber with fish hanger can be seen in Figure 1c.

## 2.4. Pre-Treatment of Skipjack Fish

The raw material used was skipjack, which is commonly used for making smoked fish in Gorontalo. The fish used must be of fresh quality and weigh about 0.7–1.0 kg/head, directly taken from the nearest fish auction site. The fish was prepared by splitting and then thoroughly cleaning the gills, stomach, slime, and blood. The fish was then soaked in 15% brine for about 40 min, drained and arranged at the hanger before set into the smoking chamber.

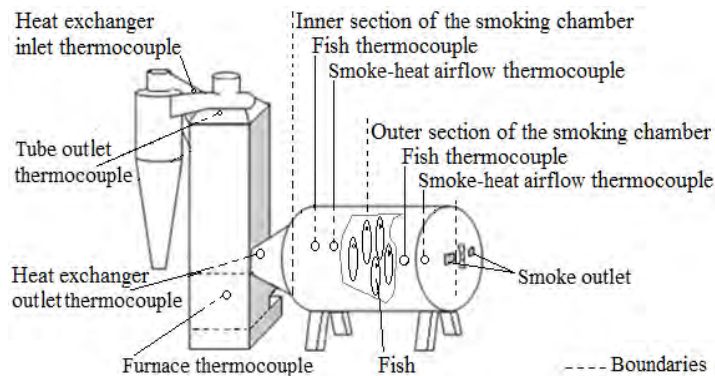
## 2.5. Instrumentation and Measurements

On the schematic diagram of the smokehouse (Figure 2), the thermocouples were set up at the furnace (burning chamber) before the inlet tube of the heat exchanger, outlet tube, the heat exchanger inlet, and the heat exchanger outlet to the smoking chamber. In the smoking chamber, the

**Comment [JD9]:** Please confirm meaning has been retained

**Response:** I have read a revised sentence and I confirmed that the meaning is retained.

thermocouple was installed both at the inner and outer sections of that chamber and at the fish core both at the inner and outer sections of that chamber. The K type thermocouple is used in the test to measure the temperature, especially in the burning chamber. The specification of the thermocouple was K type teflon cable, model of KX-2  $\times$  0.4 mm. The smoke velocity in the outlet-smoking chamber was measured by a digital anemometer, while the static pressure is measured by a Hiyoshi model AP110 thermal anemometer. This model supports dual-function measurement of static pressure in mmH<sub>2</sub>O and velocity in low and high scale measurements of m/s. The electricity consumed by the blower along the process of smoking fish was measured by Wh-meter with a measurement range of 0–9999 kWh for the voltage of 80–260 V AC.



**Figure 2.** Spot diagram of thermocouples on the smokehouse integrated design.

## 2.6. The Biomass Fuel of Coconut Shell

The coconut shell is one of the biomass materials generally used to generate smoke–heat through a combustion process. Initially, 200 g of coconut shell and husk were burned together to start the fire. To avoid excessive temperature in the smoking chamber, amounts of 300 g, 400 g, and 500 g were fed incrementally to obtain the desired temperature. In the combustion process, some parameters have to be managed such as weight increment, maximum weight, and the frequency of feeding the coconut shell to obtain appropriate temperature fluctuations. The coconut shell must be fed into the furnace when the embers are still available. The temperature panel of the smoking chamber is also provided to observe while feeding the coconut shell to obtain the desired temperature pattern of the smoking. The temperature pattern of the fish smoking process as the procedure refers to one of the references [7]. The hot-smoked fish requires two sequential processes, smoking followed by cooking. The length of smoking time will depend on the desired flavor and moisture level. The fish smoke first for up to 2 h at around 60 °C in the smoking chamber, then the heat is increased until the fish (core) reaches a temperature of at least 66 °C, or preferably 71 °C. At that temperature, the fish cooks for at least 30 min and it is important to measure the product temperature to prevent the variation of the fish under the smoke circulation. The smoking chamber should be at least 104 °C to provide a temperature of 66–71 °C at the internal fish (core). After that, the temperature of the smoking chamber can be decreased gradually along with the desired moisture level of the fish.

## 2.7. Heat Exchanger and Cyclone Separator

The design of the cyclone separator integrated with a heat exchanger is new, with dual functions. The heat exchanger of the “shell and tubes” type functioned to transfer the heat from inside tubes to outside but still within the outer wall structure. Meanwhile, the cyclone separator functioned to separate solid particles flying with the smoke–heat flow, thus avoiding contamination

to the smoked fish product. The effectiveness ( $\epsilon$ ) of heat being transferred was calculated by Equation (1) since  $C_{min} = C_h$ ; the particle size distribution of fly ash was analyzed by CILAS 1190 LIQUID, also calculating the overall collection efficiency.

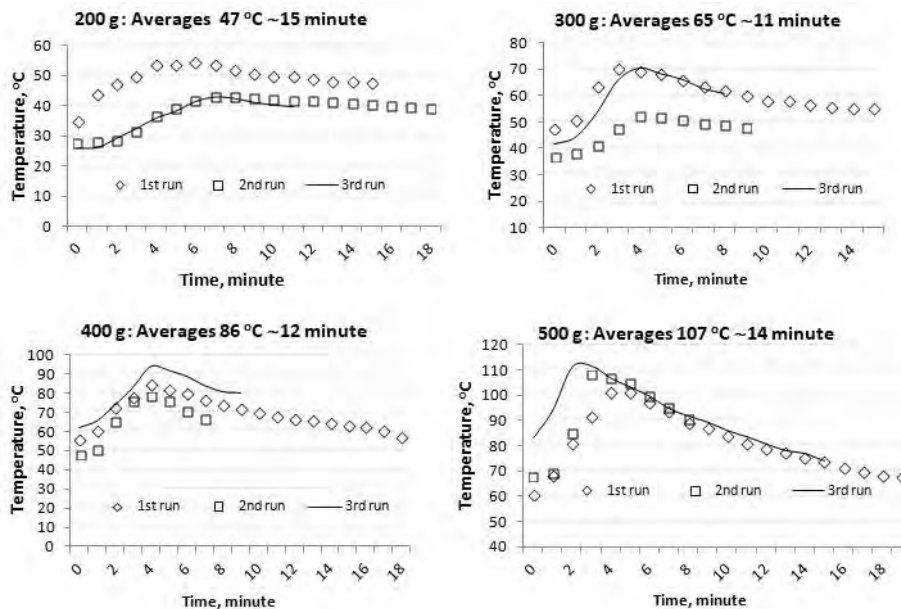
$$\epsilon = \frac{(T_{hi} - T_{ho})}{(T_{hi} - T_{ci})} = \frac{q}{q_{max}} = \frac{q}{C_{min}(T_{hi} - T_{ci})} \quad (1)$$

where  $C_{min}$  is the minimum value,  $C_h$  is heat capacity rate of the hot fluid,  $W/^\circ C$ ;  $q$  is rate of heat transfer,  $q_{max}$  is maximum heat transfer,  $W$ ;  $T_{hi}$  is temperature of the smoke-heat entering the tubes from furnace,  $^\circ C$ ;  $T_{ho}$  is temperature of the smoke-heat exiting the heat exchanger outlet,  $^\circ C$ , and  $T_{ci}$  is the temperature of the smoke-heat entering the heat exchanger inlet,  $^\circ C$ .

### 3. Results and Discussion

#### 3.1. The Biomass Fuel of Coconut Shell

Different amounts of coconut shell, 200 g, 300 g, 400 g, and 500 g were fed into the combustion chamber incrementally, to obtain the peak temperatures on each mass. The pattern describing the minimum–maximum temperature for each mass for three series of burning can be seen in Figure 3.



**Figure 3.** Profile of smoking chamber temperature with 200 g, 300 g, 400 g, and 500 g mass of coconut shell.

Figure 3 shows that there are ranges of temperature in the smoking chamber created by each mass of the coconut shell burned down in the furnace. Through the three series of coconut shell burning, 200 g has the temperature range of 42–55 °C, 300 g has a range of 52–70 °C, 400 g has a range of 78–93 °C, and 500 g has a range of 100–110 °C. The length of time of combustion of each mass of coconut shell was also diverse, with 200 g of coconut shell burning for 11–18 min, 300 g 8–15 min, 400 g 7–18 min, and 500 g 8–19 min. The averages of peak temperatures during combustion for each mass were: 200 g resulting in 47 °C for 15 min, 300 g resulting in 65 °C for 11 min, 400 g resulting in 86 °C for 12 min, and 500 g resulting in 107 °C for 14 min. These data were used to

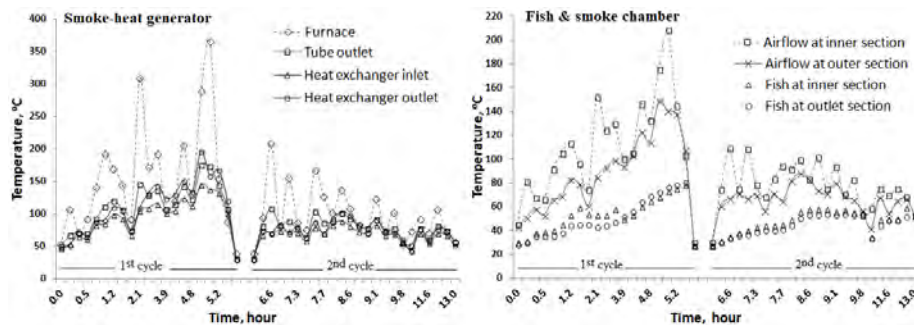
**Comment [JD10]:** Please confirm meaning has been retained

**Response:** I have read a revised sentence and I confirmed to add a word “of”.

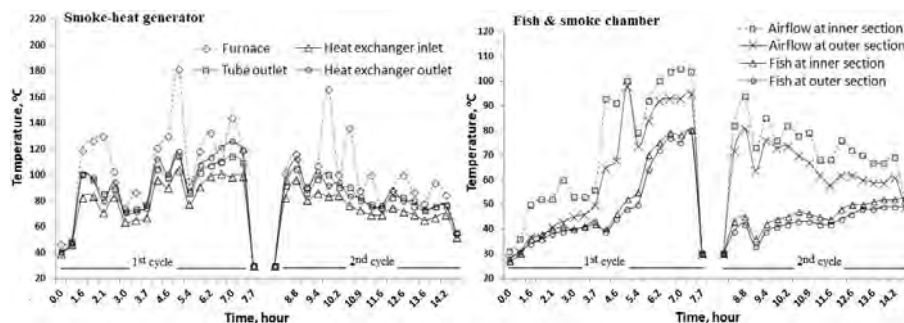
predict the temperatures within the smoking chamber by feeding the coconut shell into the furnace. The incremental amount of the coconut shell was intended to avoid excessive temperature and obtain the desired pattern of temperature. The weight of 500 g of the biomass fed into the combustion chamber, as shown in Figure 3, had sufficient heat for the ideal internal fish temperature based on the procedure mentioned above.

### 3.2. The Smoking Performance

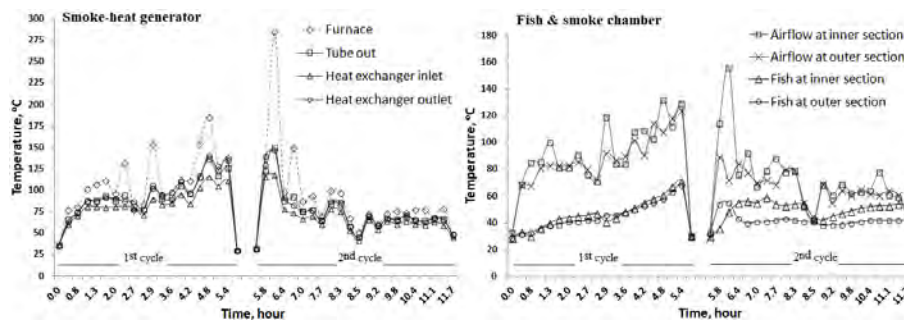
Three batches of skipjack were smoked using this smokehouse design and temperatures captured of the smoke–heat generators and the fish within the smoking chamber. In one batch of the smoking process, the fish was smoked in two cycles whose total time varied between 11.6 to 14.7 h. The charts of temperatures for the three tests, as seen in Figure 4, have the same trend both on the smoke–heat generator and the fish in the smoking chamber. The trend of temperatures for the first cycle of fish smoking, for example, increased slowly to the highest temperature at 68–80 °C, correlating with the temperature increment of the smoke–heat generated in the furnace. The temperature increment of the combustion chamber within the furnace for all three tests has contributed directly to the fish core temperatures achieved in the smoking chamber. This crucial stage was the cooking process of the skipjack, which is in line with the aim of the hot-smoking method.



(a) The 1st testing



(b) The 2nd testing



(c) The 3rd testing

**Figure 4.** The temperature profile of the (a) 1st, (b) 2nd, (c) 3rd test of fish smoking.

At this stage, the skipjack fish was already cooked but still had a high water content of more than 60% (higher than allowed by the Indonesian National Standard (SNI) [44,42]). Thus, a further stage of smoking was required to decrease the moisture content of fish. The second cycle resulted in a water content of 50.5–57.6%, fulfilling the requirements of SNI for smoked fish products [44,42]. Besides the moisture of the fish as one of the quality criteria, the other parameter also showed a satisfying rate of value. The content of protein and fat was relatively high because of the low ratio of moisture. This was also caused by the temperature being increased slowly, which prevents the protein denaturation of the skipjack fish. The increasing of this temperature can be seen through the fish thermocouple within the three tests of fish smoking (Figure 4). Another quality was related to the harmful compound, benzo[a]pyrene as the marker of polycyclic aromatic hydrocarbons, regulated by BPOM RI [25,13] was found less than 2.0 ppm. This level was also appropriately with regulation for Europe [26,14] and FAO/WHO [24,15].

In the charts of Figure 4, a typical temperature fluctuation appeared from the combustion of biomass ‘coconut shell’ as seen on the smoke–heat generator temperature and the smoking chamber temperature. The differences occurred with the temperature of the fish core that moves stably and tended to follow the pattern of temperatures needed. The internals of the fish (core) for the three tests reached the temperatures of 80 °C, 80 °C, and 71 °C, respectively. Several references stated that in the hot smoking method, the temperature should be maintained at the proper range of 68–80 °C for at least 20–30 min [6,9,16]. In this method, the fish is completely cooked so that consumers can consume the product without further cooking. The minimum internal temperature of 63 °C should be reached for 30 min as a recommendation from health regulatory agencies [3], and the product should be stored below 3 °C following the smoking [42,17,24,18]. Through the test, the average temperature of the smoking chamber had fluctuated up to 108 °C. For a certain purpose by this smoke–heat generator, the temperature capacity can be increased to the highest temperature up to 208 °C, which is more than adequate to fulfill the minimum temperature needed. A slight difference in temperatures was shown by the chart line for fish hung at inner and outer sections within the smoking chamber. It indicates that the weight of 30 kg of skipjack fish in one batch smoking could be increased to 50 kg skipjack fish as a maximum capacity.

The humidity of the smoking chamber was also recorded to observe the movement pattern along with the temperature fluctuation. The moisture of fish was the major source of relative humidity. Figure 5a shows the different patterns between the smoking chamber humidity with humidity of the ambient air. The humidity of the smoking chamber tends to go down since the temperature was high (opposites). The humidity range that is higher than the ambient air humidity indicates the moment where moisture is released from the fish. The smoke–heat flow was another factor influenced by the smoking chamber humidity. The velocity of the smoke was about 0.19 m/s which affected the changing humidity dynamically within the smoking chamber. This level of velocity is rather low, assumed to support the condition to make the components of the smoke

**Comment [JD11]:** Please confirm meaning has been retained

**Response:** I have read a revised sentence and I confirmed that the meaning is retained.

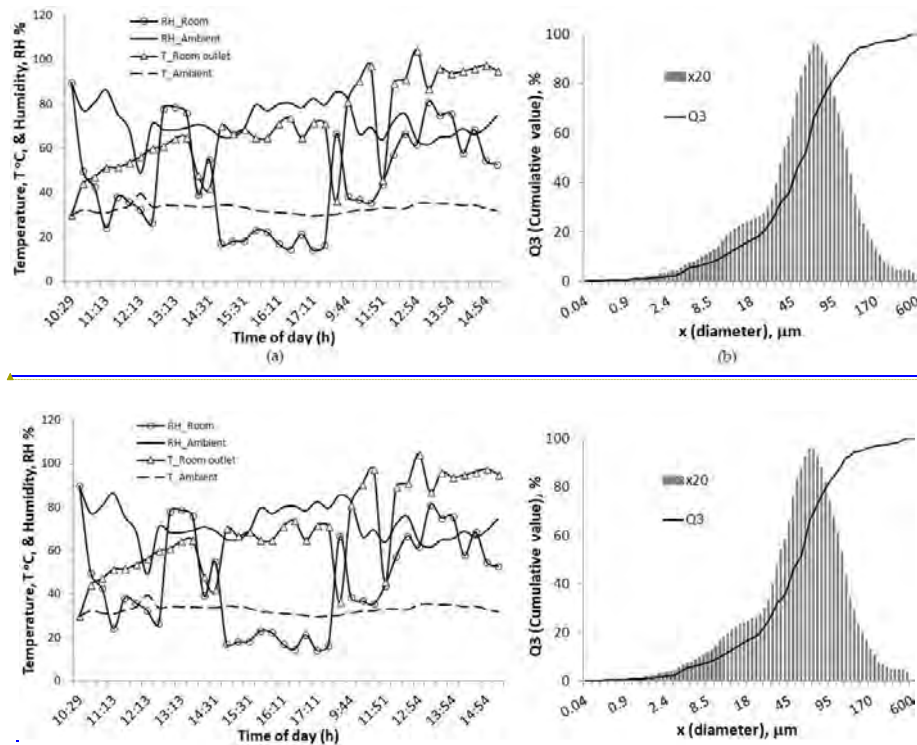
**Comment [M12]:** incorrect ref order, 25 detected after 11. You jumped the numbers in between.

**Comment [M13]:** incorrect ref order, 26 detected after 11. You jumped the numbers in between.

**Comment [M14]:** incorrect ref order, 21 detected after 11. You jumped the numbers in between.

**Comment [M15]:** incorrect ref order, 24 detected after 12. You jumped the numbers in between.

provide the desired flavor as much as possible into the flesh of the fish. Both the smoke velocity and the static pressure of the smoking chamber influenced how the flavor was absorbed by the fish.



Formatted: Font: Palatino Linotype, No underline, Font color: Black

**Figure 5.** (a) Temperature and humidity of the smoking chamber and the ambient air, (b) particle size distribution.

**Comment [M16]:** There is no subfigure (a) and (b) in the figure.

**Response:** I have revised it and add subfigure (a) and (b) in the figure.

Data calculation of the smoking performance is summarized in Table 2 from the three measurements. Specific energy consumption (SEC) can be defined as the total energy required to evaporate the amount of water content from the smoked fish product. The lowest SEC is from the first test equal to 23.99 MJ/kg, indicating that the fish was smoked with a sufficient reduction of moisture.

**Table 2.** Data of three measurement.

Components	Unit	1st	2nd	3rd
Coconut shell mass	kg	17.81	22.11	17.18
Feed rate	kg/h	1.37	1.51	1.43
Moisture	%	15.8 ± 1.5	15.2 ± 0.6	13.3 ± 0.7
Long-time	h	13.0	14.67	12.0
Coconut shell energy	MJ	327.50	406.58	315.82
Electricity	MJ	8.4	10.1	4.6
Fish mass	kg	31.2	33.0	29.3
Evaporated water	kg	14.0	15.0	11.0
SEC *	MJ/kg	23.99	27.78	29.13

\* Specific Energy Consumption.

### 3.3. Performances of the Heat Exchanger and the Cyclone Separator

The heat-exchanger is a unit supported by a biomass furnace set up at the bottom part. An aspirated type of biomass burning furnace was adopted to access the airflow from the surrounding environment as a source of oxygen for the combustion process [43,19]. The furnace was equipped by a manual biomass fuel feeder (part 6) separate from the air/burning residue duct (part 7), as seen in Figure 1.

The design of the heat exchanger, integrated with cyclone separator, has several impacts apart from the main function as heat transfer and separating the fly ash into the dustbin. The other impacts were reduced heat effect to the centrifugal blower that aspirates and pushes the smoke–heat flow, reduced tar fraction by the smoke friction inside the cyclone, and friction of the smoke to the crisscross of tubes within the shell of the heat exchanger. Additionally, the cyclone separator functions to turn back the smoke–heat flow and keep the temperature stable.

The effectiveness of heat exchanger ( $\epsilon$ ) is defined as the actual temperature change divided by the maximum possible change. The effectiveness calculated as the average value from three tests was 0.63. Several factors that influenced the effectiveness of this design were the smoke velocity, the baffle cut, and the five baffles in the one-meter length of the heat exchanger. The baffle cut was 25.4% of the total length of 0.378 m inside the shell, and the average of the rate of the air mass entering the shell was about 0.073 kg/s. The experiment based on the shell and tubes heat exchanger had reported the influences of using baffles with various distances. An increment of the effectiveness of the heat transfer within that experiment was obtained with the decreasing of the baffles spacing to a certain value with the maximum efficiency of 0.51 [44,20]. The air mass flow rate was another factor that was reported to influence efficiency and shared the pressure drop of the shell side of the heat exchanger. Another typical design to exchange the heat which is similar to the type of shell and tube heat exchanger had an effectiveness value of 0.9. The higher effectiveness of that was used in this design, caused by the high surface area and sufficient turbulence airflow to support its performance [45,21].

The performance of the cyclone separating the fly ash showed that the size range of particles was between 0.2–600  $\mu\text{m}$ , as presented in Figure 5b. The particle sizes of 10%, 50%, and 90% accumulation were dominated by the sizes of 10.97  $\mu\text{m}$ , 53.91  $\mu\text{m}$ , and 116.47  $\mu\text{m}$ , respectively. Observation of particle size distribution of coconut shell powder, which was obtained by another method (laser diffraction), was also reported in the range of 0.3–300  $\mu\text{m}$  with a mean of 34.2  $\mu\text{m}$  [46,22]. The particle sizes of ash obtained from the combustion of sawdust and shredded wood are also reported as filter ash of 0.2–5  $\mu\text{m}$ , cyclone fly ash of 2–100  $\mu\text{m}$ , and grate fire ash of 10–30,000  $\mu\text{m}$ . The grate fire ash is the fraction formed by contamination of minerals, such as sand, earth, and stones [47,23]. The particle sizes ranged between 0.2–600  $\mu\text{m}$  separated through the performance of the cyclone separator indicating a broader range than those of filter ash, cyclone fly ash, and grate fire ash. This fact can be considered as beneficial due to the changing of temperature along the smoking process that affects the physical properties of particles. The calculation of the overall collection efficiency based on particle size distribution was analyzed using CILAS 1190 LIQUID and showed the value of 94.7% [48,24]. This level of collection efficiency, according to the summary of hot gas particulate cleanup technology, was categorized in a conventional type of cyclone [49,25,20,26]. In the overall design, the heat exchanger and the cyclone separator were two units that held the important roles in this smokehouse design. The real beneficial impact was the cleanliness of the smoke to produce healthier smoked fish due to the removal of the solid particles such as fly ash and tar formed in semi-liquid. The effect of smoke and heat flow generated by this design was also according to the conditions recommended for smoked fish production [24,15].

## 4. Conclusions

The integrated design of the smokehouse has been tested to smoke the skipjack with the indirect method. The smoking performances from three measurements were conducted to observe temperatures of both the furnace chamber and the smoking chamber with skipjack fish smoking processed, coconut shell material as the fuel consumption, and moisture and water evaporation of fish. The amount of coconut shell mass burned in the furnace was incrementally given at 200 g, 300

**Comment [JD17]:** Please confirm meaning has been retained

**Response:** I have read a revised sentence and I confirmed that the meaning is retained.

g, 400 g, and 500 g to achieve the temperature needed in the smoking chamber. The internal temperature of the fish within the three tests reached 71–80 °C, with the temperature achieved in the smoking chamber about 108 °C. This temperature was able to smoke and cook the skipjack fish for 30 kg and estimated up to 50 kg for the full capacity. The first test has the lowest specific energy consumption of 23.99 MJ/kg to create a 20.1% moisture reduction during the smoking process. The skipjack with a moisture level of less than 60% indicates a satisfactory smoked fish product. The design of cyclone separator integrated with the heat exchanger holds an important role to return the smoke–heat flow after separating the fly ash, soot, and tar fraction into the dustbin. The particle size distribution of the separation by the cyclone separator ranged between 0.2 to 600 µm. The lowest value of the range indicates fly ash that was generally filtered in the separation process. Meanwhile, the highest value of the range was broader than the cyclone fly ash criterion. Since the value of the heat exchanger effectiveness was about 0.63, both the cyclone separator and the heat exchanger remain as in the conventional type. On the overall performances of the integrated design, smoked fish produced by this indirect smokehouse was healthier due to fly ash, soot, and tar being removed rather than the fish being smoked directly.

**Author Contributions:** Conceptualization, M.T. and M. (Mursalim); methodology, M.T. and S.S.; validation, M.T., M. (Mursalim) and M. (Metusalach) writing—original draft preparation, M.T. and S.S.; writing—review and editing, M.T., S.S., and W.C.; visualization, M.T., M. (Mursalim) and W.C.; supervision, S.S., M. (Mursalim) and M. (Metusalach); funding acquisition, W.C.

**Funding:** This research was funded by The Ministry of Research and Technology, Higher Education, of the Republic of Indonesia, grant number 484/UN47.D/PL/2017 addendum 1320/UN.47.D/PL/2017 and The APC was funded by Dr. Wahyu Caesarendra.

**Acknowledgments:** We gratefully acknowledge the funding from The Ministry of Research and Technology, Higher Education, of the Republic of Indonesia.

**Conflicts of Interest:** The authors declare no conflict of interest.

## References

1. Forever, G. Torrey Kiln Smokehouse: The First Smoking Device in Smoking History. Available online: <http://grillsforever.com> (accessed on 8 April 2017).
2. Essumang, D.K.; Dodoo, D.K.; Adjei, J.K. Effective reduction of PAH contamination in smoke cured fish products using charcoal filters in a modified traditional kiln. *Food Control* **2014**, *35*, 1, 85–93.
3. Hilderbrand, K.S. *Fish Smoking Procedures for Forced Convection Smokehouses*; Oregon State University Extension Service: Corvallis, OR, USA, 2001.
4. Sikorski, Z.E.; Sinkiewicz, I. Smoking Traditional. In *Encyclopedia of Meat Sciences*, 2nd ed.; Academic Press: Oxford, UK, 2014; pp. 321–327.
5. Ahmad, J.I. Smoked Foods Applications of Smoking. In *Encyclopedia of Food Sciences and Nutrition*, 2nd ed.; Academic Press: Oxford, UK, 2003; pp. 5309–5316.
6. Sikorski, Z.E.; Kolakowski, E. Smoking. In *Handbook of Meat Processing*, 1st ed.; Toldrá, F., Ed.; Wiley-Blackwell: Ames, IA, USA, 2010; pp. 231–245.
7. Rasco, B. Smoking Fish at Home Safely, PNW238. Pacific Northwest Extension publications—Washington State University Extension. 2009. Available online: <http://www.uaf.edu> (accessed on 21 September 2017).
8. Kiczorowska, B.; Samolińska, W.; Grela, E.R.; Bik-Małodzińska, M. Nutrient and Mineral Profile of Chosen Fresh and Smoked Fish. *Nutrients* **2019**, *11*, 1448.
9. Oyerinde, A.S.; Ogunlowo, A.S.; Olukunle, O.J. Development of a Cross-Flow Fish Smoking Kiln Fired by Biomass Material. *IJAST* **2013**, *3*, 531–541.
10. Royani, D.S.; Marasabessy, I.; Santoso, I.; Nurimala, M. The Engineering of the fish smoking tool of cabinet type, (in Indonesian). *J. Apl. Teknol. Pangan* **2015**, *4*, 74–78.
11. Tsai, W.T.; Lee, M.K.; Chang, Y.M. Fast pyrolysis of rice straw, sugarcane bagasse and coconut shell in an induction-heating reactor. *J. Anal. Appl. Pyrolysis* **2006**, *76*, 230–237.
12. Standar Nasional Indonesia. SNI No. 2725.1 Part 1: Quality Requirements of Smoked Fish. Revised with SNI 2725:2013—Smoked Fish with Hot Smoking Method; BSN: Jakarta, Indonesia, 2009; pp. 1–5.

**Comment [JD18]:** Please confirm meaning has been retained

**Response:** I have read a revised sentence and I confirmed that the meaning is retained.

13. [Badan Pengawasan Obat & Makanan \(BPOM\). Head Regulation of BPOM about benzo\[\*a\*\]pyrene; KBPOM RI No HK.03.1.23.11.11.09657 Tahun 2011. Available online: <http://www.jdih.pom.go.id> \(accessed on 5 August 2018\).](#)
14. [European Commission. Commission Regulation \(EC\) No. 208/2005 Amending Regulation \(EC\) No. 466/2001 as Regards Polycyclic Aromatic Hydrocarbons. Off. J. Eur. Union L/34. Available Online: <http://eur-lex.europa.eu> \(accessed on 24 April 2018\)](#)
- 14-15. [FAO/WHO. Report of the Second Session of the Codex Committee on Contaminants in Foods; Joint FAO/WHO Food Standards Programme, Codex Alimentarius Commission: Hague, The Netherlands, 2008, pp. 1–30.](#)
- 15-16. [Arason, S.; Nguyen, M.V.; Thorarinsdottir, K.A.; Thorkelsson, G. Preservation of Fish by Curing. In \*Seafood Processing\*, 1st ed.; Bozariis, I.S., Ed.; John Wiley & Sons Ltd: Hoboken, NJ, USA, 2014; pp. 129–160.](#)
- 16-17. [Flick, G.J., Jr. Smoked fish—old product with new appeal offers enhanced taste, shelf life. \*Glob. Aquac. Advocate\* \*\*2010\*\*, \*13\*, 35–36.](#)
- 17-18. [Granata, L.A.; Flick, G.J., Jr.; Martin, R.E. \*The Seafood Industry: Species, Products, Processing, and Safety\*, 2nd ed.; John Wiley & Sons: West Sussex, UK, 2012; pp. 105–426.](#)
- 18-19. [Tahir, M. Design of Solar and Biomass Energy Dryer System with Temperature Controlling on Stemmed Corn Drying. \*IJAT\* \*\*2009\*\*, \*4\*, 11–16.](#)
- 19-20. [Handoyo, E.A. The effect of using baffles on the shell and tubes heat exchanger \(in Indonesian\). \*ITM\* \*\*2001\*\*, \*3\*, 19–23.](#)
- 20-21. [Tahir, M.; Kasim, R.; Bait, Y. Performance Test of the Integrated Design of Biomass Furnace and Heat Exchanger. \*J. Agritech\* \*\*2013\*\*, \*33\*, 219–225.](#)
- 21-22. [Liyanage, C.D.; Pieris, M. A Physico-Chemical Analysis of Coconut Shell Powder. \*Procedia Chem.\* \*\*2015\*\*, \*16\*, 222–228.](#)
- 22-23. [Van Alkemade, I.; Loo, S.; Sulilatu, W. Exploratory Investigations into the Possibilities of Processing Ash Produced in the Combustion of Reject Wood. Available Online: \[www.ieabcc.nl\]\(http://www.ieabcc.nl\) \(accessed on 4 February 2017\).](#)
- 23-24. [Tahir, M.; Mursalin; Salengke; Metusalach. Design and Performance of a Cyclone Separator Integrated with Heat Exchanger for Smoked Fish Production. \*ARPN J. Eng. Appl. Sci.\* \*\*2017\*\*, \*12\*, 5396–5404.](#)
- 24-25. [Seville, J.P.K.; Clift, R. \*Gas Cleaning in Demanding Applications\*, 1st ed.; Springer Science & Business Media: Birmingham, UK, 1997; pp. 1–13.](#)
- 25-26. [Woolcock, P.J.; Brown, R.C. A review of cleaning technologies for biomass-derived syngas. \*Biomass Bioenergy\* \*\*2013\*\*, \*52\*, 54–84.](#)
26. [Arason, S.; Nguyen, M.V.; Thorarinsdottir, K.A.; Thorkelsson, G. Preservation of Fish by Curing. In \*Seafood Processing\*, 1st ed.; Bozariis, I.S., Ed.; John Wiley & Sons Ltd: Hoboken, NJ, USA, 2014; pp. 129–160.](#)
27. [Tsai, W.T.; Lee, M.K.; Chang, Y.M. Fast pyrolysis of rice straw, sugarcane bagasse and coconut shell in an induction heating reactor. \*J. Anal. Appl. Pyrolysis\* \*\*2006\*\*, \*76\*, 230–237.](#)
28. [Standar Nasional Indonesia. SNI No. 2725-1 Part 1: Quality Requirements of Smoked Fish, Revised with SNI 2725:2013 Smoked Fish with Hot Smoking Method; BSN: Jakarta, Indonesia, 2009; pp. 1–5.](#)
29. [Flick, G.J., Jr. Smoked fish—old product with new appeal offers enhanced taste, shelf life. \*Glob. Aquac. Advocate\* \*\*2010\*\*, \*13\*, 35–36.](#)
30. [Tahir, M. Design of Solar and Biomass Energy Dryer System with Temperature Controlling on Stemmed Corn Drying. \*IJAT\* \*\*2009\*\*, \*4\*, 11–16.](#)
31. [Handoyo, E.A. The effect of using baffles on the shell and tubes heat exchanger \(in Indonesian\). \*ITM\* \*\*2001\*\*, \*3\*, 19–23.](#)
32. [Tahir, M.; Kasim, R.; Bait, Y. Performance Test of the Integrated Design of Biomass Furnace and Heat Exchanger. \*J. Agritech\* \*\*2013\*\*, \*33\*, 219–225.](#)
33. [Liyanage, C.D.; Pieris, M. A Physico-Chemical Analysis of Coconut Shell Powder. \*Procedia Chem.\* \*\*2015\*\*, \*16\*, 222–228.](#)
34. [Van Alkemade, I.; Loo, S.; Sulilatu, W. Exploratory Investigations into the Possibilities of Processing Ash Produced in the Combustion of Reject Wood. Available Online: \[www.ieabcc.nl\]\(http://www.ieabcc.nl\) \(accessed on 4 February 2017\).](#)
35. [Tahir, M.; Mursalin; Salengke; Metusalach. Design and Performance of a Cyclone Separator Integrated with Heat Exchanger for Smoked Fish Production. \*ARPN J. Eng. Appl. Sci.\* \*\*2017\*\*, \*12\*, 5396–5404.](#)

**Comment [M19]:** Newly changed information, please confirm.

**Response:** I have read that sentence and confirmed that the newly changed information is an improvement.

**Formatted:** Indent: Left: 0.75 cm, No bullets or numbering

36. Seville, J.P.K.; Clift, R. *Gas Cleaning in Demanding Applications*, 1st ed.; Springer Science & Business Media: Birmingham, UK, 1997; pp. 1–13.
37. Woolecock, P.J.; Brown, R.C. A review of cleaning technologies for biomass derived syngas. *Biomass Bioenergy* **2013**, *52*, 54–84.
38. FAO/WHO. *Report of the Second Session of the Codex Committee on Contaminants in Foods*; Joint FAO/WHO Food Standards Programme, Codex Alimentarius Commission: Hague, The Netherlands, 2008; pp. 1–20.
39. Oyerinde, A.S.; Ogunlowo, A.S.; Olukunle, O.J. Development of a Cross Flow Fish Smoking Kiln Fired by Biomass Material. *JAST* **2013**, *2*, 531–541.
40. Royani, D.S.; Maracabesey, I.; Santoso, J.; Nuzimala, M. The Engineering of the fish smoking tool of cabinet type, (in Indonesian). *J. Apl. Teknol. Pangan* **2015**, *4*, 74–78.
41. Cranata, L.A.; Flick, G.J., Jr.; Martin, R.E. *The Seafood Industry: Species, Products, Processing, and Safety*, 2nd ed.; John Wiley & Sons: West Sussex, UK, 2012; pp. 105–126.
42. Badan Pengawasan Obat & Makanan (BPOM). Head Regulation of BPOM about benzo[a]pyrene; KBPOM RI No HK.03.1.23.11.11.09657 Tahun 2011. Available online: <http://www.jdih.pom.go.id> (accessed on 5 August 2018).
43. European Commission. Commission Regulation (EC) No. 208/2005 Amending Regulation (EC) No. 466/2001 as Regards Polycyclic Aromatic Hydrocarbons. *Off. J. Eur. Union* **L/34**. Available Online: <http://eur-lex.europa.eu> (accessed on 24 April 2018).



© 2020 by the authors. Submitted for possible open access publication under the terms and conditions of the Creative Commons Attribution (CC BY) license (<http://creativecommons.org/licenses/by/4.0/>).

**Comment [M20]:** Newly changed information, please confirm.

**Response:** I have read that sentence and confirmed that the newly changed information is an improvement



Mas [redacted] Fifi Proof Reader



Tahir-proofreading.docx

DOCX • 1 MB

01:37

1/11/2020

Selamat malam pak

01:38

Berikut saya kirimkan hasil proofreadingnya

01:38

Total ada 4704 kata, jadi total biayanya Rp 823.200. Mohon agar ditransfer ke rekening BCA No. 7610572050 atas nama [redacted] Krishna [redacted] Terima kasih sebelumnya.

01:40

Ok pak.

07:02 ✓✓



Muh. Tahir

Teknologi Pangan, Fakultas Pertanian  
Universitas Negeri Gorontalo, Gorontalo 96128  
Indonesia

# INVOICE

MDPI  
St. Alban-Anlage 66  
4052 Basel  
Switzerland  
Tel.: +41 61 683 77 34  
Fax: +41 61 302 89 18  
E-Mail: [billing@mdpi.com](mailto:billing@mdpi.com)  
Website: [www.mdpi.com](http://www.mdpi.com)  
VAT nr. CHE-115.694.943

Date of Invoice: 27 January 2020  
Manuscript ID: processes-685112  
Invoice Number: 685112  
Your Order: by e-mail ([muhtahir@ung.ac.id](mailto:muhtahir@ung.ac.id)) on 18 December 2019  
Article Title: "Performance of Smokehouse Designed for Smoking Fish with the Indirect Method"  
Name of co-authors: Muh. Tahir, Sastri Salengke, Mursalim Mursalim, Metusalach Metusalach and Wahyu Caesarendra  
[Additional Author Information](#)  
Terms of payment: 5 days  
Due Date: 1 February 2020  
License: CC BY

Description	Currency	Amount
Article Processing Charges	CHF	1 200.00
Subtotal without VAT	CHF	0.00
VAT (0%)	CHF	0.00
<b>Total with VAT</b>	<b>CHF</b>	<b>0.00</b>

## Accepted Payment Methods

### 1. Online Payment by Credit Card in Swiss Francs (CHF)

Please visit <https://payment.mdpi.com/624588> to pay by credit card. We accept payments in Swiss Francs (CHF) made through VISA, MasterCard, Maestro, American Express, Diners Club, Discover and China UnionPay.

### 2. Paypal in Swiss Francs (CHF)

Please visit <https://www.mdpi.com/paypal> and enter the payment details. Note that the fee for using Paypal is 5% of the invoiced amount.

### 3. Wire Transfer in Swiss Francs (CHF)

Important: **Please provide the Manuscript ID (processes-685112) when transferring the payment**

Payment in CHF must be made by wire transfer to the MDPI bank account. Banks fees must be paid by the customer for both payer and payee so that MDPI can receive the full invoiced amount.

IBAN: CH48 0483 5160 4356 5100 0  
Beneficiary's Name: MDPI AG  
Beneficiary's Address: St. Alban-Anlage 66, CH-4052 Basel, Switzerland  
Bank Account Number (CHF, Swiss Francs Account for MDPI): 0060-1604356-51  
Bank Name: Credit Suisse  
Bank Address: Credit Suisse, St. Alban-Graben 1-3, Postfach 2560, CH-4002 Basel, Schweiz  
SWIFT code (Wire Transfer Address): CRESCH280A  
Clearing number: 4835

For detailed payment instruction, or for more alternative payment methods, visit the website at <https://www.mdpi.com/about/payment>.