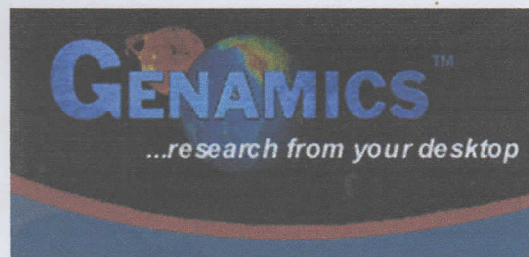
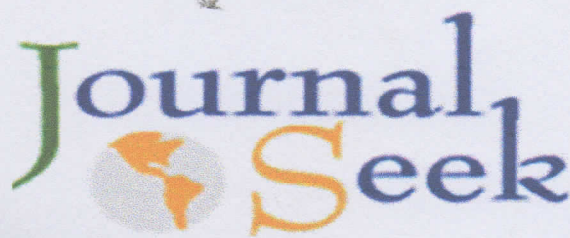


The Internasional Journal Of Social Sciences



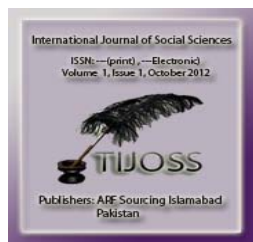
Publishers: ARF Publication Sourcing, Islamabad, Pakistan

Publication abstracting/indexing





Visualizing Social Science Research


[Home](#)
[About us](#)
[Editorial board](#)
[Volumes](#)
[Submit Paper](#)
[Subscribe](#)
[Contact us](#)

[Review process](#)
[Fee payment](#)
[Indexing](#)
[Author Guidelines](#)
[Fields of social Sciences](#)

Editorial board

Senior Editor

Professor (Dr.) Nawab Ali Khan

Department of Human Resource Management, College of Business Administration, Salman Bin Abdulaziz University, K.S.A

Editorial Board

Dr. Shamsuddin Ahmed.

Professor, Graduate School of Business, USP, Fiji

Dr. Amer Hamzah Jantan

Head, Executive Program Unit, Faculty of Economics and Management, University Putra Malaysia

Dr. Madhubala Bava Harji

Director of Foundation Programs and Extension Education, Multimedia University, Malaysia

Dr. Walid Hassane SARKIS

Ph.D. in Clinical Psychology, Professor at the Faculty of Humanities of Notre Dame University, Lebanon.

Mehvash Ali

American University of Sharjah, Clinical Psychology, Sharjah, UAE

Dr. P. Govindaraju

Professor and Head, Department of Communication, Manonmaniam Sundaranar University, India.

Dr. Dileep Kumar.

Graduate School of Business (OYA-GSB), Universiti Utara Malaysia, Malaysia

Prof. Dr. Viktor Jakupec

Honorary Professor, Faculty of Economics and Social Sciences, University of Potsdam, Germany

Dr. Ravi Saxena

Assistant Professor, Political Science, Institute of Law, Nirma University, Ahmedabad, India

Dr. Zakaryya Mohamed Abdel-Hady

Associate Professor of Islamic Thought & Culture, Department of Dawa & Islamic Culture, College of sharia & Islamic Studies, Qatar University, Qatar.

Professor DR. Parimal H. Vyas

Dean, Department of Commerce & Business Management, The Maharaja Sayajirao University of Baroda, India

Dr. B. Nishantha,

Faculty of Management & Finance, University of Colombo, Sri Lanka

Lingam Govinda Ishwar

Senior Lecturer in Education, School of Education, USP

Dr. Mesake Rawaikela Dakuidreketi

The University of the South Pacific, School of Education, Suva.

- Anthropology
- Business studies
- Communication studies
- Criminology
- Demography
- Development studies
- Economics
- Education
- Geography
- History
- Industrial relations
- Law
- Linguistics
- Media studies
- Political science
- Psychology
- Public administration
- Sociology
- Legal Management
- Paralegal studies
- International studies
- Library Science
- Information Science

Subscribe : Newsletter

Name

Email



Prof. (Mrs.) Role Kanchan Head of
Department of Geography, The M.S.University of Baroda, Gujarat, India

Prof. Lavinia Tiko
School of Education, Faculty of Professions, UNE, Armidale, Australia

Dr. Pranam Dhar
Associate Professor, Department of Commerce & Management, West Bengal
State University, India.

Dr. Christina Gitsaki Associate Academic Dean of English (linguistics)
Dubai,UAE

Prof Y. G. Tharakan
Head of Department – Masters Programme & Allied Hospitality
Studies,Manipal University, Karnataka State. India

Dr. Abdul Rahim Abdul Samad
Faculty of Economics & Management, University Putra Malaysia, Malaysia

Prof Priyanka Sharma
CSE Department, Institute of Technology, Nirma University, Ahmedabad,
India

Dr. Punita Punia Tata Institute of Fundamental Research, India.

Dr.Ekta Sharma Asst. Professor, Ahmedabad University India

D.N. Sansanwal
Professor of education, Head and Dean, Devi Ahilya Vishwavidyalaya

Dr. Azlina Md. Yassin Senior Lecturer,Faculty of Management
Technology,University Tun Hussein Onn Malaysia.

Dr.Alaa-Aldin Abdul Rahim a. al Athmay
Associate Professor, Department of Management, Marketintg & Public
Administration,College of Business,University of Sharjah.

Dr. Christopher Sudhaker
Dean, MCON, Mangalore, Manipal University,India

Dr.Siba Charan Subudhi
Asst. professor , Department of education, North-eastern hill university, tura
campus, Tura

Dr Islam Elgammal
Assistant Professor at Faculty of Tourism and Hotel Management, Suez Canal
University, Egypt.

Dr. Wycliffe Amukowa
Senior lecturer at Mount Kenya University in Kenya.

Dr.Munivenkatappa
Head, Department of Commerce and Management, Smt. VHD Central Institute
of Home Science, Bengaluru, India.

Dr. Siti Suriani Binti Othman
Lecturer, Faculty of leadership and management , University of Sains Islam
Malaysia.

Dr. Lakshman Wedikkarage
Senior Lecturer, Department of Social Science Education, Faculty of Education,
University of Colombo,Sri Lanka.

Dr. Pradeep Kumar Choudhury
Assistant Professor, Institute for Studies in Industrial Development (ISID), New
Delhi, India.

JITBM Marketing Team:

1. Mohamad Fajar Farazi

Informatics Management, Politeknik Piksi Ganesha , Indonesia


[Home](#)
[About us](#)
[Editorial board](#)
[Volumes](#)
[Submit Paper](#)
[Subscribe](#)
[Contact us](#)
[Review process](#)
[Fee payment](#)
[Indexing](#)
[Author Guidelines](#)


September 2017 Volume 55th. Number 1. ISSN :2305-4557

Subscribe : Newsletter

Name

Email

The International Journal of Social Sciences	
Title	MULTICULTURAL LEARNING FOR STRENGTHENING THE COMMUNITY'S LEARNING
Author	Dr Masri Kudrat Umar, Ir. Yuniarti Koniyo, Dr Drs. Sukarman Kamuli, Prof. Dr Ir. Nelson Pomalingo,
Source	International Journal of Social Sciences pp 001-006 Vol 55. No. 1 -- 2017
Abstract	<p>In many references, it is proposed that the big theme of multiculturalism is the gap on things related to race, religion and ethnicity. The impact is the rise of conflicts among society which lead to radicalism, disputes, even violence. In a different perspective, multiculturalism can be defined as more than race, religion, and ethnicity, but also things related to human needs. Adopting the theme developed by Bennet (2003) on multiculturalism learning, community needs aspect becomes a part that needs to be regarded in designing multiculturalism learning. The efforts to prevent multicultural-related problems in the community will be comprehensive if the causing effects can be well defined. This was not only limited to an issue related to race, religion, and ethnicity, but also to variation and differences in community needs. According to Maslow, human needs are physiological needs, safety needs, love/belonging needs, esteem needs, and self-actualisation needs. These requirements become critical elements in designing multicultural learning for strengthening the community learning. The community should be strong to deter and anticipate various social threats, and learning is one of the ways to protect the community from these treats.</p>
Keyword	multicultural learning, community's learning.
	Click here for full view of the paper

The International Journal of Social Sciences	
Title	DEVELOPMENT OF RESEARCH-BASED LEARNING TO INCREASE STUDENTS' LEARNING ABILITY
Author	Rustam I. Husain, Zulaecha Ngiu, Masri Kudrat Umar
Source	International Journal of Social Sciences pp 001-010 Vol 55. No. 1 -- 2017
Abstract	<p>Within the perspective of education technology, learning needs innovations to ensure its easiness and quality. Learning innovation can be within the lesson material, lesson management, and lesson delivery. This means that learning innovation can be developed to suit the needs. Development of learning model becomes one of the significant choice to bring innovation needed for learning itself. Learning innovation needs sources that can directly support its development. learning innovation to develop the lesson materials used research outputs as part of the solution to provide up to date sources. It also indicates that research outputs which have been published in articles, books, and papers are new innovations that should be included in learning materials. Research-based learning model is an idea to be investigated to find the best model, its implementation, and the dissemination of the model. In its implementation, lecturers' and students' output will be included. Therefore, its implementation involves lecturers and students as the owners of the innovation and students as the objects of learning and as learners. Research-</p>

	based learning model empowers various sources of learning such as, research outputs that are not currently being used to increase the quality of learning. Through this model, learning process will always be updated by using research outputs as the main component of this learning model
Keyword	Research-Based, Learning
	Click here for full view of the paper

 The International Journal of Social Sciences	
Title	THE LEADERSHIP OF JAWARA ON POLITICAL OFFICIALS IN THE PREPARATION OF LOCAL REVENUE AND EXPENDITURE OF BANTEN PROVINCE
Author	Tubagus RegiasaFajar
Source	International Journal of Social Sciences pp 011-016 Vol 55. No. 1 -- 2017
Abstract	<p><i>The background of this research is the existence of a pattern of cultural identity of Jawara in Banten province and most of the leaders in Banten is a jawarawhich their leadership style is affect the preparation of local revenue and expenditure in Banten Province.</i></p> <p><i>This research use the descriptive method with qualitative approach and supported with quantitative data (descriptive statistics) from interviewees which choosen based on snowball technique and also validity and reability test with triangulation,interview,observation,documentationstudy, the descriptive technique of analysis and also the presentation of the result in formal and informal way.</i></p> <p><i>Conclusion (1) there are six strategic issues. Those strategic issues can be a series of strategies that can be set in the maximization of the leadership of jawara in the preparation of local revenue and expenditure in Banten Province (2)the impact of the leadership of jawaraon political officials in the preparation of local revenue and expenditure of Banten province for the allocation,distribution,stabilization,and coordination, the problem are often found in distribution. (3) the leadership models that should be owned by Jawara especially in the preparation of local revenue and expenditure in Banten province is SEKAMAR (Strengths,Ethice,Knowledge,Aspirative,Mistic,Action,and Religious)</i></p> <p><i>Suggestion (1) necessity of pay an attention to ASOCA in the strategies to harmonize the better cultural identity of jawara in the maximization of the preparation of budgeting and use thepower (2)the necessity of study in the distribution of budget to district in Banten province so there is no inequality in budget distribution (3) SEKAMAR pattern(Strengths,Ethice,Knowledge,Aspirative,Mistic,Action,and Religious) can be used as a guide for the leadership of Jawara in Banten province according to the characteristic of Banten.</i></p>
Keyword	
	Click here for full view of the paper

 The International Journal of Social Sciences	
Title	THE SUFFICIENCY OF POLICY ABOUT THE DELEGATION OF SOME AUTHORITY FROM THE REGANT TO THE SUBDISTRICT HEAD IN IMPROVING THE QUALITY OF WASTE MANAGEMENT IN TANGERANG, BANTEN PROVINCE
Author	Aziz Gunawan
Source	International Journal of Social Sciences pp 017-024 Vol 55. No. 1 -- 2017
Abstract	<p><i>The existence of the policy about the delegation of some authority from the regent to the head of the subdistrict in improving the quality of waste management in Tangerang, Banten Province. according to the regulation no 14 year 2014 are not able to fulfillthe sufficiency of the policy. so there is a research about the conditions and the model of the sufficiency of the policy about the handover of some authority from the regant to the subdistrict's head in improving the service quality of waste management in Tangerang. in order to know and to analyze the sufficiency of those handover of some authority and also to find out the model of those sufficiency of the policy. This research use the descriptive method with qualitative approach and supported by quantitative data (descriptive statistics) from interviewees which choosen based on snowball technique and also validity and reliability test with triangulation technique, collecting the data through the interview,observation and documentation study and also the data analysis with descriptive technique.</i></p> <p><i>The result of the research can concluded that (1) the sufficiency of policy about the delegatiin of some authority from the regant to the head of the subdistrict in improving the quality of waste management in Tangerang,Banten province with permanent effectiveness,reduced or stable cost,increases of effectiveness (2) models of the sufficiency of the policy about the delegation of</i></p>

	<p><i>some authority from the regant to the head of the subdistrict in improving the qualaity of waste management in Tangerang ,Banten Province is the change on the cost because of the cost efficiency and the change of the effectiveness because the motivation from people. suggestion that should be noted : (a) the level of the cost efficiency should be concern to the awareness of the people,quickness,accuracy,and the ease of coordination within the society; (b)the effectiveness with the benefit of motivation in Tangerang ; (c) the implementing of the model through the socialization in the society so they will understand about the implementation.</i></p>
Keyword	
	Click here for full view of the paper

DEVELOPMENT OF RESEARCH-BASED LEARNING TO INCREASE STUDENTS' LEARNING ABILITY

¹Rustam I. Husain, ²Zulaecha Ngiu, ³Masri Kudrat Umar ¹Faculty of Education, Gorontalo State University, Indonesian, ²Faculty of Social Science, Gorontalo State University, Indonesian, ³Faculty of mathematics and natural sciences, Gorontalo State University, Indonesian **E-mail:** ¹rustam.husain@ung.ac.id; ²zulaecha.ngiu@ung.ac.id; ³masrikudrat@ung.ac.id

ABSTRACT

Within the perspective of education technology, learning needs innovations to ensure its easiness and quality. Learning innovation can be within the lesson material, lesson management, and lesson delivery. This means that learning innovation can be developed to suit the needs. Development of learning model becomes one of the significant choice to bring innovation needed for learning itself. Learning innovation needs sources that can directly support its development. Learning innovation to develop the lesson materials used research outputs as part of the solution to provide up to date sources. It also indicates that research outputs which have been published in articles, books, and papers are new innovations that should be included in learning materials. Research-based learning model is an idea to be investigated to find the best model, its implementation, and the dissemination of the model. In its implementation, lecturers' and students' output will be included. Therefore, its implementation involves lecturers and students as the owners of the innovation and students as the objects of learning and as learners. Research-based learning model empowers various sources of learning such as, research outputs that are not currently being used to increase the quality of learning. Through this model, learning process will always be updated by using research outputs as the main component of this learning model

KEYWORDS: Research-Based, Learning

INTRODUCTION

Learning should be kept updated through various improvements. This improvement is most probably done through incorporation of research outputs. It is a well-known fact that many of the research outputs are still unused to enrich the learning. In university level, research products and outputs are made into various documents, such as; proceeding, research report, and other scientific writings.

Usage of these research outputs become the basis for the research-based learning model. It is expected that this model will not only be a model but also it will be well implemented by learning practitioners.

The obstacle in the development of this learning model is the availability of research documents. Easiness in accessing research information has guided us to obtain this research information in electronic forms and from the internet. This option is appropriate to overcome the current problem of limited access to quickly access the research outputs.

A research in the University of Missouri in Mentioned that, "the importance of using research-based practices to support the needs of all learners in general education settings

and to provide teachers with strategies for obtaining research-based practices. Students with diverse learning needs require that teachers utilize more effective and efficient practices in their teaching given that many are already behind academically, socially, or both", [2].

Scarcity of research output documents available should be become part of the job and commitment of the academics to resolve it.

Support staff should be valued and they need to be valued through their ability to be academic administrators, academic secretaries and academic technicians. In other words, recruiting support staff should not merely be a matter of transferring an individual from another large organization because the role in a university should be highly distinctive and specialized and, crucially, valued [5]

RESULTS DISCUSSION

It has to be admitted that the gap in education is partly due to the research outputs that are often segregated from learning activities [5] Research from academic world often just become the science learn by those who has specific interest on that

field, and unknown to the academic community in general where it was founded.

Research-based learning has been done by some experts such as; Kloser, Brownell, Shavelson, and Fukami, where their laboratory assignments were based on research to produce different results for the students' interest and motivation [4]. Research-based learning provides authentic research experience within the learning activity for the students. It significantly influences students' understanding on ability to effectively design research and interpret experiment data.

Usage of research-based learning in children's education is evident in study conducted by Kazura, K., and Tuttle, H. that "Students enjoyed making the connections between course content and children's behavior in a natural setting [3]. They recommended that future students would enjoy conducting research and advised them to utilize time-management skills to promote success in the course".

Research-based learning can be a trend to update learning which expected to have impact on the increase of lesson plan/learning administration (learning media).

This study used development method. The result of the study written in this article is the output of the research-based learning conceptual model. This conceptual learning model was derived from various literatures and the results of students and lecturers' works.

Out of 60 scientific writings made by students and lecturers, 80% were identified to discuss learning practices and the rest discussed science that support the learning. In addition, in-depth interviews were also held with teachers and lecturers.

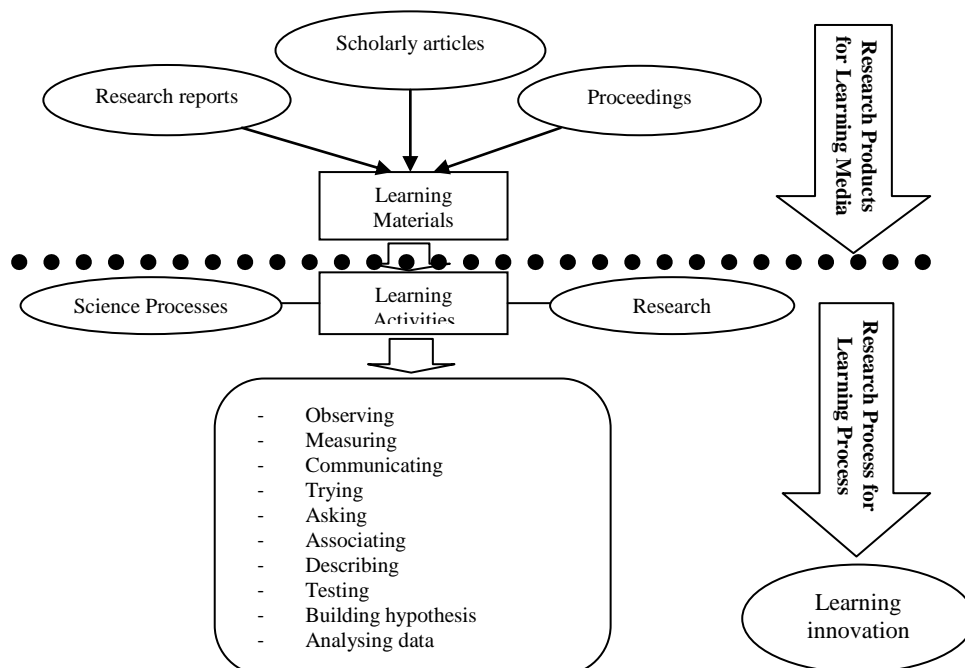
Three times Focus Group Discussions were held with teachers, lecturers, and students. The final findings were presented in a seminar and the results were written in this article.

Research based-learning encompasses two important items, namely; utilization of research.

These three research outputs become the main element in designing lesson plan. The content of the lesson plan becomes more actual, even it is more appropriate with the learning objectives and needs. In research-based learning, research products enhance the preparation in learning activities. Through a complete learning material, learning media will be readier to use.

The next activity is to use the core research activities in learning and science process in learning. Thus, learning activity incorporates research activities on learners. There are several research activities, such as; observing, measuring, communicating, trying, asking, associating, describing, testing, building hypothesis, analyzing the data, concluding, and presenting.

In general, research-based learning is presented in the following scheme.



Description of Research-Based Learning

Based on the above scheme, it is clear that the stages of research-based learning are: (1) implementation of research outputs in designing learning media, and (2) implementation of research activities within the learning process.

Implementation of research outputs in designing the learning media consists of; (a) developing syllabus, (b) developing the lesson plan implementation, (c) selection of method, strategy, and learning approach, (d) developing the learning material, (e) developing students' worksheet, (f) learning media selection, and (g) assessment of the learning result. These documents should be supported with related research outputs.

Implementation of research outputs in learning process is carried out through the following stages; (1) introduction; (facts + knowledge) presenting research facts creates various perception, various interpretations that demand answers through learning activities, (2) Core, (observation + knowledge + skill) conducts activities that involve senses, correlates with prior knowledge, and models the intended activities, and (3) Closing (knowledge and attitude) concludes the discussion related to the topic, skill needed and its attitude.

In learning at university level, learning activities can be broadened by adapting several research activities adopted from supervised research writing activities, such as; Functional, Enculturation, Critical Thinking, Emancipation, and Relationship development [1]). In detail, approach to supervise research writings is presented below:

	Functional	Enculturation	Critical Thinking	Emancipation	Relationship development
Supervisor's activity	Rational progression through tasks	Gatekeeping	Evaluation challenge	Monitoring and supporting constructivism	Accessing digital documents within the internet network.
	Consultation	Introduction to people and exemplars of high quality work	Enquiry-based learning		by experience developing a relationship
Supervisor's knowledge & skills	Directing	Diagnosis of deficiencies	Argument	Facilitation	Emotional intelligence
	Negotiating project management	Coaching	Analysis synthesis	Reflection	Managing conflict
Possible Student Reaction	Obedience	Role modelling	Constant inquiry, fight or flight	Personal growth, reframing	Emotional intelligence.
	Negotiation	Apprenticeship			

CONCLUSIONS

Research-based learning is an implementation of various research products in learning. The important steps in implementation of this research-based learning are; (1) implementation of research outputs in designing the learning media; and (2) implementation of research activities within the learning process.

Implementation of research outputs in designing the learning media consists of; (a) developing syllabus, (b) developing the lesson plan implementation, (c) selection of method, strategy, and learning approach, (d) developing the learning material, (e) developing students' worksheet, (f) learning media selection, and (g) assessment of the learning result. These documents should be supported with related research outputs.

Implementation of research outputs in learning process is carried out through the following stages; (1) introduction; (facts + knowledge) presenting research facts creates various perception, various interpretations that demand answers through learning activities, (2) Core, (observation + knowledge + skill) conducts activities that involve senses, correlates with prior knowledge, and models the intended activities, and (3) Closing (knowledge and attitude) concludes the discussion related to the topic, skill and attitude needed.

Gathering documents as reference in designing the research-based learning material has to become part of the co-commitment. Commitments among academics people also needed in ensuring the availability of these research result documents, easiness in accessing those documents, and to make accessing these research outputs documents as easy as accessing digital documents within the internet network.

REFERENCES

- [1] Anne, L., and Murray R. Supervising Writeng: Helping Postgraduate Students Develop as Research. *Innovations in Education and Teaching International*. Vol. 52. No. 5.558-570, 2015
- [2] Lembke, E.S., And Stormont, M. Using Research-Based Practices To Support Students With Diverse Needs In General Education Settings. *Psychology in the Schools*, Vol. 42(8), 2005.
- [3] Kazura, K., and Tuttle, H. Research Based Learning Approach: Students Perspective of Skills Obtained. *Journal of Instructional Psychology*, Vol. A good team member

- [4] Kloser, M. J., Brownell, S.E., Shavelson, R.J. and Fukami, T. Effects of a Research-Based Ecology Lab Course: A Study of Non volunteer Achievement, Self-Confidence, and Perception of Lab Course Purpose. Journal of College Science Teaching.
- [5] Smith, P., and Rust C. The Potential Of Research-Based Learning For The Creation Of Truly Inclusive Academic Communities Of Practice. Innovations in Education and Teaching International Vol. 48, No. 2, May 2011.