

Proses Revisi Pertama

Sulastri Arsad, S.Pi, M.Sc, M.Si <sulastriarsad@ub.ac.id> 19 février 2019 à 09:14 À : NEPT Journal
<contact@neptjournal.com>

Dear Editorial Team of NEPT Journal,

Thank you for your correction. Here in the file attached I send you our manuscript revision regarding the method of chlorophyll-a determination.

<https://mail.google.com/mail/u/0?ik=c79bb87756&view=pt&search=all&permthid=thread-f%3A1623980985589112262&simpl=msg-f%3A1623980...> 1/8

9/7/21, 1:49 PM Messagerie Universitas Brawijaya - RE: submit paper - neptjournal.com

Kind regards,

Sulastri

ARSAD

Lecturer and Researcher
Faculty of Fisheries & Marine
Science Universitas Brawijaya
Malang, Indonesia 65145

[Texte des messages précédents masqué]



Horizontal distribution of Chlorophyll-a in the Gorontalo bay rev.docx
1100K

Horizontal distribution of chlorophyll- α in the Gorontalo Bay

Miftahul Khair Kadim¹, Nuralim Pasisingi¹ and Sulastrisarsad²

¹ Department of Aquatic Resources Management, Fisheries and Marine Science Faculty,
Universitas Negeri Gorontalo, Gorontalo 96128, Indonesia

² Department of Aquatic Resources Management, Fisheries and Marine Science Faculty,
Universitas Brawijaya, Malang 65145, Indonesia

Email: khairkadim@gmail.com, pasisinginuralim@gmail.com, sulastrisarsad@ub.ac.id

Abstract

The concentration of chlorophyll- α in the Gorontalo Bay is necessary to be observed since it could describe the condition of water richness. The semi-enclosed Gorontalo Bay morphology causes the status of water fertility to be largely determined by the input of inorganic or organic materials originating from the mainland. This study aimed to figure out the concentration and horizontal distribution pattern of the chlorophyll- α then further to decide the relationship between the concentration of chlorophyll- α and the nutrient in the Gorontalo Bay. There were fifteen sub sampling sites selected based on coastal and ecological characteristics. Results showed that the distribution pattern of chlorophyll- α in the Gorontalo Bay in June and July 2017 was dissimilar and its concentration ranged from 0.984 to 3.744 mg m⁻³. In addition, there was a positive and substantial relationship between chlorophyll- α and phosphate ($p < 0.01$). Nonetheless, there was no significant correlation between chlorophyll- α and nitrate ($p > 0.01$) and ammonia ($p > 0.01$).

Keywords: *ammonia, bay, chlorophyll- α distribution, nitrate, phosphate*

Introduction

Bay ecosystems are very dynamic due to the influence from the mainland and human impacts (Madin et al. 2016; Österblom et al. 2017). Physical, chemical, and biological conditions depending on inputs which derived from land activities. Ecosystem balance and sustainability of aquatic biota of bay become an essential aspect that must be maintained. Water fertility is one point that contributes greatly in ensuring the balance of the marine ecosystem. The distribution of chlorophyll- α on the water surface is an indicator which can be used to estimate water fertility.

Geographically Gorontalo Bay is a part of Tomini Bay, morphologically Gorontalo Bay is semi-enclosed waters then likely that the profile of surface chlorophyll- α distribution in these waters is local in type and different from the distribution of chlorophyll- α in Tomini Bay in general. The two main points that underlie the importance of studying the distribution of chlorophyll-a in the Gorontalo Bay are ecological and economic roles. Ecologically, the Gulf of Gorontalo is still semi-encircled waters to enable inputs from terrestrial activities that carry organic or inorganic materials are very decisive for water fertility. Human activities in the mainland around the waters of Gorontalo Bay relatively varied. Output and waste from human activities containing organic or inorganic materials flow into the waters through rivers and streams during rain (Cloern et al. 2016).

Gorontalo Bay has an economical purpose as this bay is a strategic zone for fishing by local fishermen. Local people whose main livelihoods are fishermen depend severely on catches. The availability of the abundant and varied fish of the bay is meanderingly influenced by the availability of diet. Phytoplankton, the autotrophic part of the plankton community, is a key element in oceanic ecosystems and in biogeochemical cycling (Beltran-Heredia et al. 2017). The presence of it as the food of fish is determined by the water fertility aspect that can be reflected from the distribution of chlorophyll-a.

The purpose of this study was to determine the concentration and horizontal distribution pattern of chlorophyll- α and to figure out the correlation between chlorophyll- α and nutrient concentrations in the Gorontalo Bay.

Materials and Methods

Water samples were carried out twice in June and July 2017. Water samples were collected on five stations with dissimilar in land use. In the main land near from site 1, there are rare resident settlements; near, from site 2 there are no human activities yet because of a steep cliff presence. Moreover, land use near from the site 3 is Bone River estuary. In the site 4 there is an oil port and in the site 5 there are densely populated settlements. Sampling at each station was performed out on 3 sub-stations by dragging the line-transect to the offshore as presented on the sampling map on the Figure1.

The samples for analysis of chlorophyll- α and nutrient concentration were collected from fifteen different points then compiled into five sample bottles and taken at Hydrobiology Laboratory, Environment and Waters Biotechnology division, Universitas Brawijaya referring to APHA standard procedure. The surface water samples collected with phytoplankton net by performing a horizontal towing of the plankton net (Tuney & Maroulakis 2014). The net was held by the side of the boat (while the boat was moving slowly) for approximately 1.5 minutes. A slight turn performed with the boat so that the net was towed from the inner side of the turn to avoid drifting the net under the boat.

The spectrophotometric method was used for the determination of chlorophyll- α concentration (Rice et al. 2014). The absorbance 664 used to determine the chlorophyll- α concentration in the extract through the calculation by inserting the corrected optical densities in the following equations:

$$\text{Chlorophyll} - \alpha = 11.85 (\text{absorbance } 664) - 1.54 (\text{absorbance } 674) - 0.08 (\text{absorbance } 630)$$

where:

absorbance 664, 647, and 630 = corrected optical densities (with a 1-cm light path) at the wavelength.

After determining the concentration of pigment the extract, the amount of pigment per unit volume was calculated as follows:

$$\text{Chlorophyll} - \alpha, \text{ mg/m}^3 = \frac{C_a \times \text{extract volume, L}}{\text{Volume of sample, m}^3}$$

Data Analysis

Data were analyzed by statistical software SPSS and Microsoft office Excel 2010. Data were subjected by correlate and bi-variety test to find significant relationship between chlorophyll- α and nutrient concentration, while t-test to find significant distinction between nutrients concentration during sampling ($p < 0.05$) considered being significantly different. In addition, the distribution of chlorophyll- α concentrations were visualized by *ArcGIS* version.10 software with spatial interpolation technique.

Results and Discussions

Concentration and distribution of chlorophyll-a in the Gorontalo Bay

The concentration of chlorophyll- α among the five stations was varied ranged from 0.984 to 3.740 mg m^{-3} during two sampling times, June and July (Fig. 2). Averagely, the concentration of Chlorophyll- α recorded during sampling was higher in July than that in June. Furthermore, the value of chlorophyll- α in the station 4 in July was the highest with the number of 3.744 mg m^{-3} , on the other hand the lowest concentration was in the station 5 in June with the number of 0.9844 mg m^{-3} .

The chlorophyll- α surface concentration in the Gorontalo Bay in June was higher than that of chlorophyll- α in July. This is because a day before the sampling in July there was rain, therefore the inorganic materials that are the source of food for phytoplankton come in the bay waters through run-off. It is generally accepted that phytoplankton biomass can be reflected by concentration of chlorophyll-a (Larsson et al. 2017).

Being the predominant pigment in phytoplankton cells, chlorophyll- α has been long used as a proxy for estimating the standing stocks of phytoplankton biomass in the water column. The latter is of major importance, as phytoplankton plays a central role in the structure and functioning of aquatic ecosystems, while its abundance reflects the tropic status of a water body (Mandalakis et al. 2017). Moreover, Figure 3 depicts that chlorophyll- α in June 2017 was different from that of July 2017.

Based on the visualization results of horizontal distribution of chlorophyll- α (Fig. 3), it showed that the chlorophyll- α distributed highly in the western area of the bay in June 2017 and in the eastward revealed low concentration. Furthermore, different trend was shown in July 2017 as there was a change in the horizontal distribution

pattern of chlorophyll- α . In July the eastern part of the waters has a high concentration of chlorophyll- α , while in the west it has low chlorophyll-a value. This fact indirectly indicates that the tropic status on the west and east part of Gorontalo Bay in these two months is altered.

The main factor suspected to cause this spreading pattern distribution is a seasonal reversing wind season. Local fishermen informed that in June 2017 it was the end of west season where the local wind moves from eastward to westward. Otherwise, in July it was the east wind season where the wind blows from westward to eastward. Allahdadi et al. (2017) identified that coastal current and its spatial distribution were significantly affected by open boundary conditions. Wind controls the movement of water in semi-enclosed bay of large shallow Lake Taihu, China (Li et al. 2017). The movement of wind causes a water mass transfer in the semi-enclosed Gorontalo bay which has chlorophyll- α .

Relationship between chlorophyll-a and nutrient concentrations in the Gorontalo Bay

The concentrations of ammonia, nitrate and phosphate in the waters of Gorontalo Bay in June and July of 2017 are relatively various. In the Gulf of Gorontalo in June and July, the ammonia concentration was $0.116 \pm 0.213 \text{ mg m}^{-3}$ with the least value of 0.035 mg m^{-3} and the greatest value of 0.336 mg m^{-3} . Nitrate concentration was $0.091 \pm 0.074 \text{ mg m}^{-3}$ with the lowest number of 0.042 mg m^{-3} and the highest number of 0.146 mg m^{-3} . The concentration of phosphate was $0.047 \pm 0.095 \text{ mg m}^{-3}$ with the smallest concentration of 0.003 mg m^{-3} and the highest value of 0.137 mg m^{-3} . Phosphate concentrations in waters are lower than nitrogen (ammonia and nitrate). This is because the phosphorus has been considered a key limiting nutrient in marine systems (Redfield 1958).

The relationship between chlorophyll- α concentration with nutrient, ammonia, nitrate, and phosphate is presented in Figure 4. It can be seen from that figures that there is a negative correlation between chlorophyll- α and ammonia and nitrate. Although based on t-test results in the data showed no significant correlation of chlorophyll- α concentrations to ammonia and nitrate. The determination coefficient between chlorophyll- α and ammonia and nitrate was 40% and 21% respectively. Balali et al.

(2013) stated that there is a significant negative correlation between chlorophyll- α and nitrate ($R^2 = 26.1\%$) and ammonia ($R^2 = 11\%$) as the amount of chlorophyll- α was high the amounts of nitrate and ammonia were in the lowest.

Otherwise, a positive correlation is indicated by the relationship between chlorophyll- α concentration and phosphate concentration in the waters of the Gorontalo Bay with a coefficient of determination of 94%. Furthermore, there is a positive correlation between chlorophyll- α and phosphate in the waters (Magumba et al. 2013; Hakanson & Eklund 2010; Davis & Cornwell 1991).

Conclusions

There was a positive and significant relationship between chlorophyll- α and phosphate ($p < 0.01$) but there was no significant correlation between chlorophyll- α and nitrate ($p > 0.01$) and ammonia ($p > 0.01$) in the Gorontalo Bay in June and July 2017. In addition, the chlorophyll- α concentration in the Gorontalo Bay in June and July 2017 ranged from 0.984 to 3.744 mg L⁻¹.

References

- Allahdadi MN, Jose F, D'Sa EJ, Ko DS (2017) Effect of wind, river discharge, and outer-shelf phenomena on circulation dynamics of the Atchafalaya Bay and shelf. *Ocean Engineering* 129:567-580. <https://doi.org/10.1016/j.oceaneng.2016.10.035>
- Balali S, Hoseini SA, Ghorbani R, Kordi H (2013) Relationships between Nutrients and Chlorophyll a Concentration in the International Alma Gol Wetland, Iran. *J Aquac Res Development* 4:173. doi:10.4172/2155-9546.1000173
- Beltrán-Heredia E, Aksnes DL, Cao FJ (2017) Phytoplankton size scaling with nutrient concentration. *Marine Ecology Progress Series* 571:59-64. <https://doi.org/10.3354/meps12132>

- Cloer JE, Abreu PC, Carstensen J, Chauvaud L, Elmgren R, Grall J, Greening H, Johansson JOR, Kahru M, Sherwood ET, Xu J, Yin K (2016) Human activities and climate variability drive fast-paced change across the world's estuarine-coastal ecosystems. *Global Change Biology* 22: 513–529. doi: 10.1111/gcb.13059
- Davis ML and Cornell DA (1991) *Introduction to Environmental Engineering*. Second edition. Mc-Graw-Hill, Inc., New York. 822 p.
- Hakanson L and Eklund JM (2010) Relationships between chlorophyll, salinity, phosphorus, and nitrogen in lakes and marine areas. *Journal of Coastal Research* 263: 412–423. doi: <http://dx.doi.org/10.2112/08-1121.1>
- Larsson ME, Ajani PA, Rubio AM, Guise K, McPherson RG, Brett SJ, Davies KP, Doblin MA (2017) Long-term perspective on the relationship between phytoplankton and nutrient concentrations in a southeastern Australian estuary. *Marine Pollution Bulletin* 114(1): 227-238. <https://doi.org/10.1016/j.marpolbul.2016.09.011>
- Li Y, Jalil A, Du W, Gao X, Wang J, Luo L, Li H, Dai S, Hashim S, Yu Z, Acharya K (2017) Wind induced reverse flow and vertical profile characteristics in a semi-enclosed bay of large shallow Lake Taihu, China. *Ecological Engineering* 102: 224-233. <https://doi.org/10.1016/j.ecoleng.2017.02.022>
- Madin EMP, Dill LM, Ridlon AD, Heithaus MR, Warner RR (2016) Human activities change marine ecosystems by altering predation risk. *Global Change Biology* 22: 44–60. doi:10.1111/gcb.13083
- Magumba D, Maruyama A, Takagaki M, Kato A, Kikuchi M (2013) Relationships between Chlorophyll-a, Phosphorus and Nitrogen as Fundamentals for Controlling Phytoplankton Biomass in Lakes. *Environmental Control in Biology* 51(4):179-185. doi: 10.2525/ecb.51.179

Mandalakis M, Stravinskaitė A, Lagaria A (2017) Ultrasensitive and high-throughput analysis of chlorophyll-a in marine phytoplankton extracts using a fluorescence microplate reader. *Anal Bioanal Chem* 409:4539–4549. <https://doi.org/10.1007/s00216-017-0392-9>

Österblom H, Crona BI, Folke C, Nystrom M, Troell M (2017) Marine Ecosystem Science on an Intertwined Planet. *Ecosystems* 20: 54-61. <https://doi.org/10.1007/s10021-016-9998-6>

Redfield AC (1958) The biological control of chemical factors in the environment. *Am Sci* 46: 205-221

Rice EW, Baird RB, Eaton AD, Clesceri LS. (2012). APHA (American Public Health Association): Standard Method for The Examination of Water and Wastewater 22th ed. Washington DC (US): AWWA (American Water Works Association) and WEF (Water Environment Federation)

Tuney I and Maroulakis M. (2014). *Phytoplankton Sampling Methods: Technical Assistance for Capacity Building on Water Quality Monitoring*. Ege University, Department of Biology, Turkey ENVECO S.A., Greece.

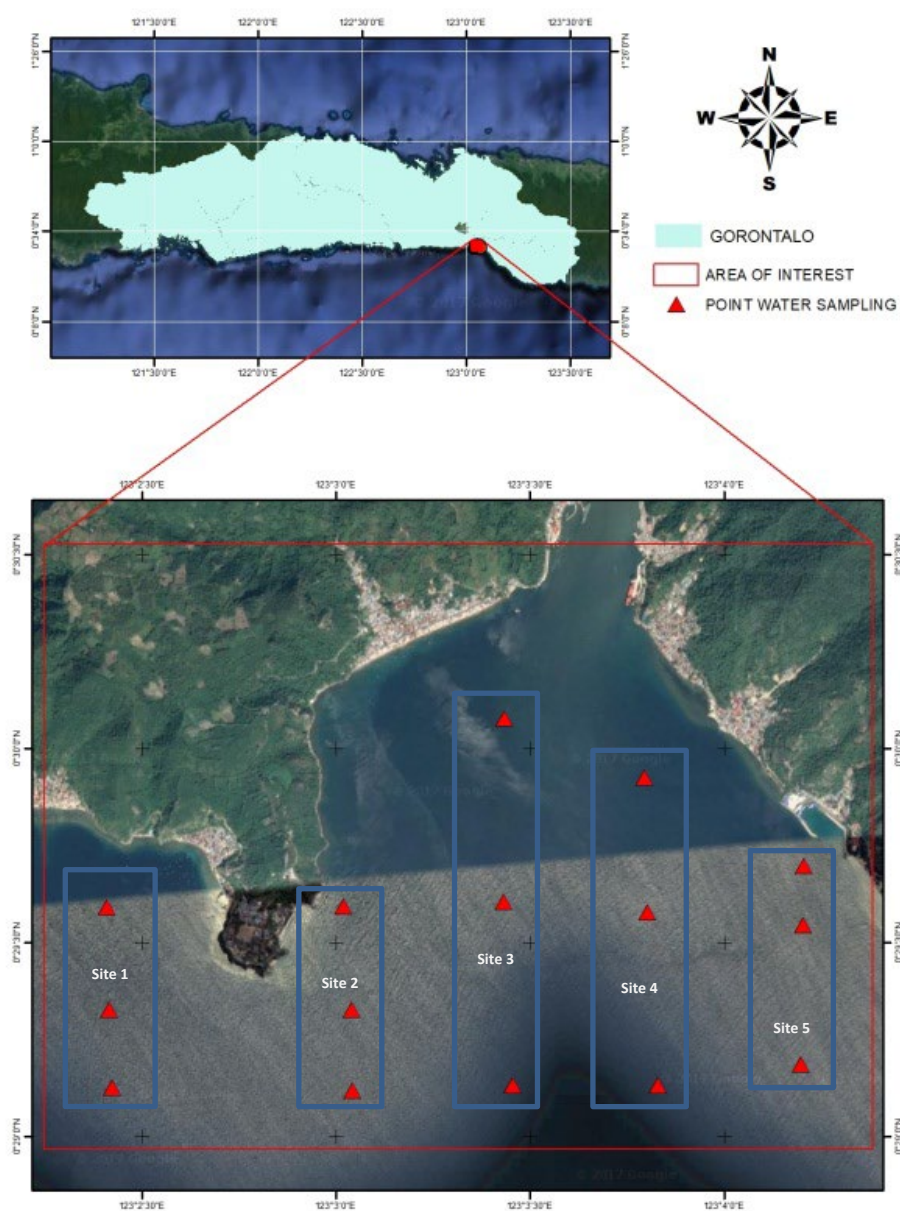


Figure1. Sampling Sites in the Gorontalo Bay

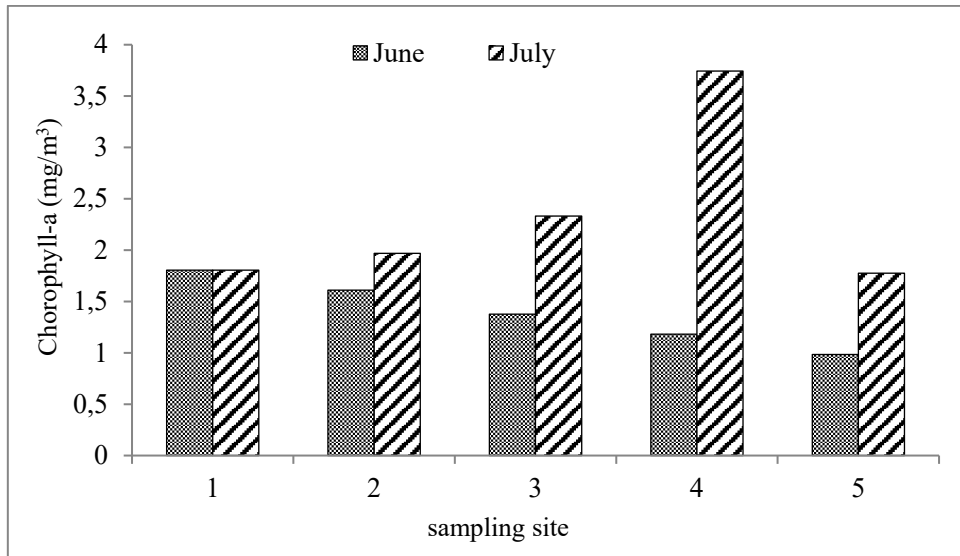


Figure 2. Chlorophyll-a in the Gorontalo Bay at five sampling sites between June and July ($p < 0.05$)

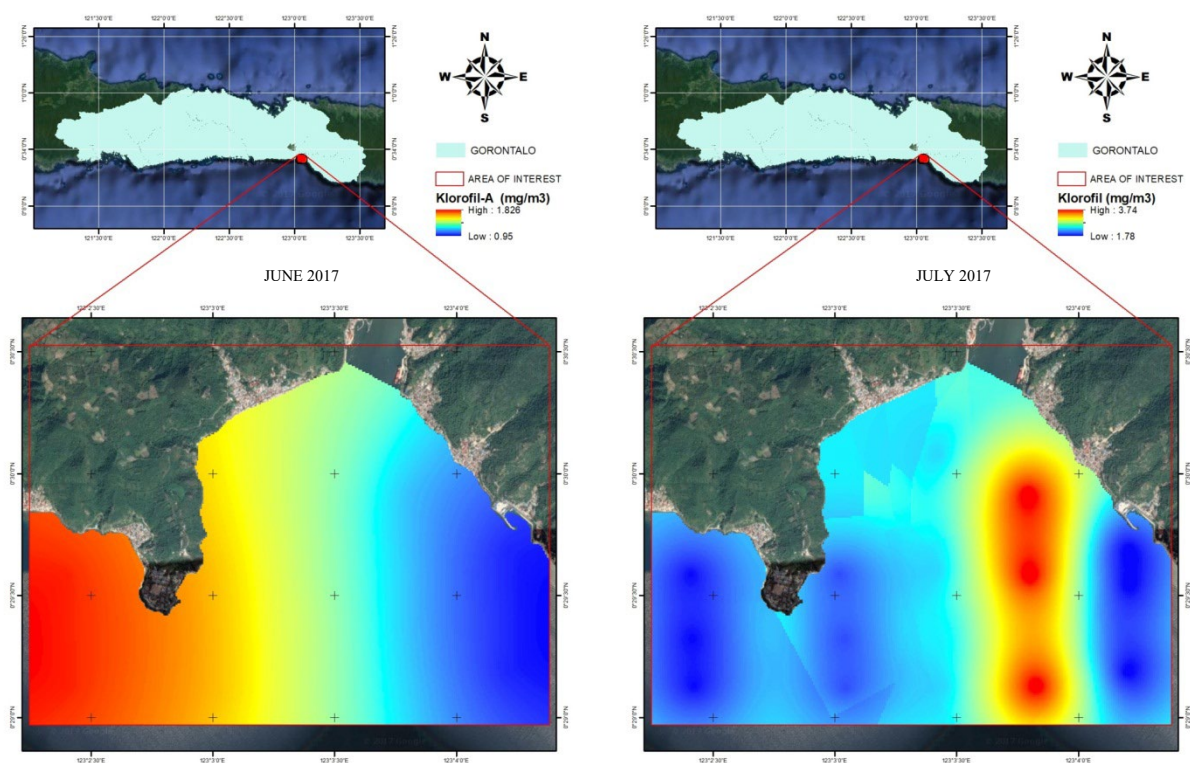
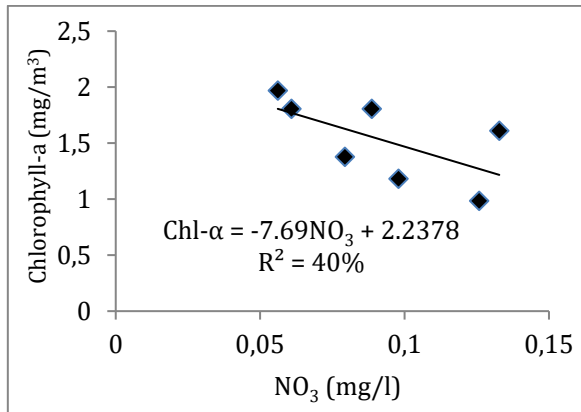
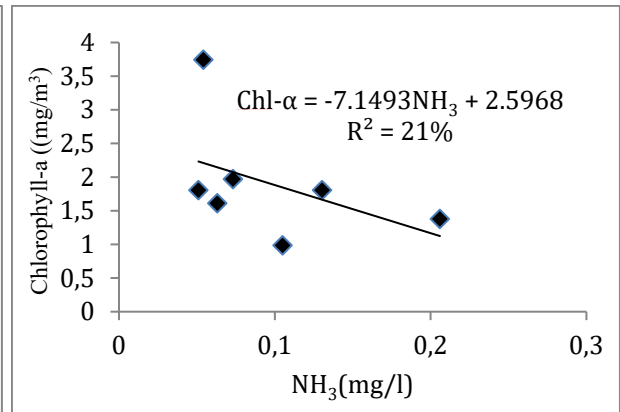


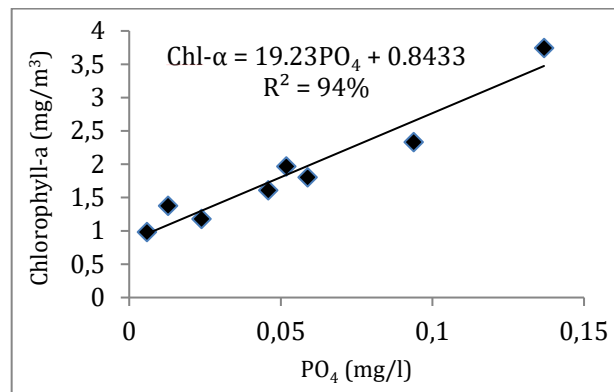
Figure 3. Horizontal distribution of chlorophyll-a in the Gorontalo Bay in June and July 2017



(i)



(ii)



(iii)

Figure 4. Simple correlation between chlorophyll-a and (i) NO_3 (ii) NH_3 and PO_4 (iii) concentration in the Gorontalo Bay

NEPT Journal <contact@neptjournal.com> 19 février 2019 à 15:07 À : "Sulastri Arsad,S.Pi,M.Sc,M.Si"
<sulastriarsad@ub.ac.id>

Dear Sir/Madam,

We have received your paper entitled "Horizontal distribution of chlorophyll- α in the Gorontalo Bay" for publication in the journal Nature Environment and Pollution Technology. Its paper No. is D-928, which may please be quoted in all future correspondence. Without paper number, queries may not be answered. The preliminary scrutiny of the paper showed that the scientific contents are within the scope of the journal and the paper is suitable for publication. The paper will not be rejected now, but authors may be asked for modifications/corrections, if any, after the final review process, which may take about 2-3 months. The final publication of the paper may take about nine months to one year. Please maintain the trail of the e-mail so as to keep a track on the full correspondence.

Sincerely,

P. K.

Goel

Editor

Nature Environment and Pollution

Technology E-mail :

contact@neptjournal.com

Website:

www.neptjournal.com Mob.

+91-9890248152

[Texte des messages précédents masqué]

Sulastri Arsad,S.Pi,M.Sc,M.Si <sulastriarsad@ub.ac.id> 19 février 2019 à 15:15 À : Khair Kadim
<khairkadim@gmail.com>

----- Forwarded message -----

From: **NEPT Journal**

<contact@neptjournal.com> Date: Tue, 19 Feb
2019 14:07

Subject: RE: submit paper - neptjournal.com

To: Sulastri Arsad,S.Pi,M.Sc,M.Si <sulastriarsad@ub.ac.id>

[Texte des messages précédents masqué]

Dear Sir/Madam,

We are sending herewith the **Initial Acceptance Letter** of your paper **D-928**. Please deposit the publication charges in our bank, the details of which are specified in the letter. While depositing the amount, please mention the paper number. Please intimate us immediately with bank receipt after depositing the amount in our bank A/c so that we can check and process your paper further. In case of non-intimation your deposit may go unnoticed. The **Final Acceptance Letter** indicating the Vol. No., Issue No. and year in which your paper is likely to be appearing will be sent after receiving the publication charges.

P. K.

Goel

(Editor)

<https://mail.google.com/mail/u/0?ik=c79bb87756&view=pt&search=all&permthid=thread-f%3A1623980985589112262&simpl=msg-f%3A1623980...> 2/8

9/7/21, 1:49 PM Messagerie Universitas Brawijaya - RE: submit paper - neptjournal.com

From: NEPT Journal [<mailto:contact@neptjournal.com>]

Sent: 19 February 2019 12:38

To: 'Sulastri Arsad,S.Pi,M.Sc,M.Si'

Subject: RE: submit paper - neptjournal.com

Dear Sir/Madam,

We have received your paper entitled "Horizontal distribution of chlorophyll- α in the Gorontalo Bay" for publication in the journal Nature Environment and Pollution Technology. Its paper No. is D-928, which may please be quoted in all future correspondence. Without paper number, queries may not be answered. The preliminary scrutiny of the paper showed that the scientific contents are within the scope of the journal and the paper is suitable for publication. The paper will not be rejected now, but authors may be asked for modifications/corrections, if any, after the final review process, which may take about 2-3 months. The final publication of the paper may take about nine months to one year. Please maintain the trail of the e-mail so as to keep a track on the full correspondence.

Sincerely,

P. K.

Goel

Editor

Nature Environment and Pollution

Technology E-mail :

contact@neptjournal.com

Website:

www.neptjournal.com Mob.

+91-9890248152

From: Sulastri Arsad,S.Pi,M.Sc,M.Si [<mailto:sulastrisad@ub.ac.id>]

Sent: Tuesday, February 19, 2019 6:44 AM

To: NEPT Journal

Subject: Re: submit paper - neptjournal.com

Dear Editorial Team of NEPT Journal,

[Texte des messages précédents

masqué] [Texte des messages

précédents masqué]



Initial Acceptance-D-928.pdf

26K

Sulastri Arsad,S.Pi,M.Sc,M.Si <sulastriarsad@ub.ac.id> 12 juin 2019 à 20:31 À : NEPT Journal
<contact@neptjournal.com>

Dear Editor,

Finally we have already make a payment for the publication of our article..You could confirm with your bank

agent.. Thank you.

Co-author

S.Arsad

[Texte des messages précédents masqué]

recieipt payment kadim et al.pdf
1157K



NEPT Journal <contact@neptjournal.com> 14 juin 2019 à 15:28 À : "Sulastri Arsad,S.Pi,M.Sc,M.Si"
<sulastriarsad@ub.ac.id>

Dear Sir,

Payment received. Sending the final acceptance letter for the paper D-928.

P.K.Goel

[Texte des messages précédents masqué]

Final Acceptance-D-928.pdf
24K



Sulastri Arsad,S.Pi,M.Sc,M.Si <sulastriarsad@ub.ac.id> 14 juin 2019 à 20:27 À : miftahulkhairkadim@ung.ac.id

Congratz...

----- Forwarded message -----

From: **NEPT Journal** <contact@neptjournal.com>

[Texte des messages précédents

masqué] [Texte des messages

précédents masqué]



Final Acceptance-D-928.pdf
24K

Nature Environment and Pollution Technology

(AN INTERNATIONAL OPEN ACCESS JOURNAL ON DIVERSE ASPECTS OF ENVIRONMENT SINCE 1994)
ISSN 0972-6268(PRINT); ISSN 2395-3454(ONLINE)

A UGC Approved and Scopus Indexed Journal

Published by

Technoscience Publications and Technoscience Knowledge Communications

A-504, Bliss Avenue, Opp. SKP Campus, Balewai, Pune-411 045, Maharashtra, India

Mob: 9890248152, e-mail: contact@neptjournal.com, journalnept@gmail.com

Date: 14/6/2019

1. NAAS Rating of the Journal (2019) = 3.85
2. Scopus H-Index = 7
3. Scopus SJR (2017 = 0.193)
4. Cites per Doc. (2Yr) 2017 equivalent to Impact Factor™ = 0.74
5. Index Copernicus = 109.45 (2016)
6. ISI Journal Impact Factor (2018) = 2.236

Final Acceptance Letter

Paper No. D-928

To,

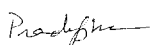
Miftahul Khair Kadim, NuralimPasisingi and Sulastris Arsad
Department of Aquatic Resources Management, Fisheries and Marine Science Faculty,
Universitas Negeri Gorontalo, Gorontalo 96128, Indonesia

Dear Sir/Madam

We are happy to inform you that your paper entitled **“Horizontal distribution of chlorophyll-a in the Gorontalo Bay”** has been accepted for publication in the scientific journal *Nature Environment and Pollution Technology* [ISSN 0972-6268 (Print), ISSN 2395-3454 (Online)]. The paper is likely to come in Vol. 18, No. 4 (December), Year 2019.

Thanking you,

Yours sincerely,



P. K. Goel
Editor

For full papers of current and old issues, Online submission of the research papers, Sample copy of the journal and literature survey visit our website:

www.neptjournal.com

Proses Revisi ke-2

(Proof read)

Sulastri Arsad, S.Pi, M.Sc, M.Si <sulastriarsad@ub.ac.id> 25 novembre 2019 à 09:45 À : NEPT Journal
<contact@neptjournal.com>
Cc : miftahulkhairkadim@ung.ac.id

Dear Editorial Team of NEPT

Journal,

We are very sorry for our previous email. In file attached we send you the revision of our Figure (graph) in word format and redactional revision of units in pdf

format. Thank you for correcting our paper.

Warm regards,
Authors.

Sulastri ARSAD
Lecturer and Researcher
Faculty of Fisheries & Marine Science
Universitas Brawijaya
Malang, Indonesia 65145

<https://mail.google.com/mail/u/0?ik=c79bb87756&view=pt&search=all&permthid=thread-f%3A1623980985589112262&simpl=msg-f%3A1623980...> 7/8

9/7/21, 1:49 PM Messagerie Universitas Brawijaya - RE: submit paper - neptjournal.com

[Texte des messages précédents masqué]

2 pièces jointes



D-928-Miftahul Khair Kadim et al 2019.docx
375K



D-928-Miftahul Khair Kadim et al 2019.pdf
977K



Horizontal Distribution of Chlorophyll- α in the Gorontalo Bay

Miftahul Khair Kadim*, Nuralim Pasingi* and Sulastri Arsad**

*Department of Aquatic Resources Management, Fisheries and Marine Science Faculty, Universitas Negeri Gorontalo, Gorontalo 96128, Indonesia

**Department of Aquatic Resources Management, Fisheries and Marine Science Faculty, Universitas Brawijaya, Malang 65145, Indonesia

Nat. Env. & Poll. Tech.
Website: www.neptjournal.com

Received: 19-02-2019

Accepted:

Key Words:

Ammonia
Gorontalo Bay
Chlorophyll- α distribution
Nitrate
Phosphate

ABSTRACT

The concentration of chlorophyll- α in the Gorontalo Bay is necessary to be observed since it could describe the condition of water richness. The semi-enclosed Gorontalo Bay morphology causes the status of water fertility to be largely determined by the input of inorganic or organic materials originating from the mainland. This study aimed to figure out the concentration and horizontal distribution pattern of the chlorophyll- α then further to decide the relationship between the concentration of chlorophyll- α and the nutrients in the Gorontalo Bay. There were fifteen sub-sampling sites selected based on coastal and ecological characteristics. Results showed that the distribution pattern of chlorophyll- α in the Gorontalo Bay in June and July 2017 was dissimilar and its concentration ranged from 0.984 to 3.744 mg.m⁻³. In addition, there was a positive and substantial relationship between chlorophyll- α and phosphate ($p < 0.01$). Nonetheless, there was no significant correlation between chlorophyll- α and nitrate ($p > 0.01$) and ammonia ($p > 0.01$).

INTRODUCTION

Bay ecosystem is very dynamic because of the influence of the mainland and human impacts (Madin et al. 2016, Österblom et al. 2017). Physical, chemical, and biological conditions depend on inputs which are derived from land activities. Ecosystem balance and sustainability of aquatic biota of bay become an essential aspect that must be maintained. Water fertility is one point that contributes greatly in ensuring the balance of the marine ecosystem. The distribution of chlorophyll- α on the water surface is an indicator which can be used to estimate water fertility.

Geographically Gorontalo Bay is a part of Tomini Bay, morphologically Gorontalo Bay is semi-enclosed waters then likely that the profile of surface chlorophyll- α distribution in these waters is local in type and different from the distribution of chlorophyll- α in Tomini Bay. The two main points that underlie the importance of studying the distribution of chlorophyll- α in the Gorontalo Bay are ecological and economic roles. Ecologically, the **Gulf of Gorontalo** is still semi-encircled waters to enable inputs from terrestrial activities that carry organic or inorganic materials which are very decisive for water fertility. Human activities in the mainland around the waters of Gorontalo Bay are relatively varied. Output and waste from human activities containing organic or inorganic materials flow into the waters through rivers and streams during rain (Cloern et al. 2016).

Gorontalo Bay has an economical purpose as this bay is a strategic zone for fishing by local fishermen. Local people whose main livelihoods are fishermen depend mainly on catches. The availability of the abundant and varied fish of the bay is meanderingly influenced by the availability of diet. Phytoplankton, the autotrophic part of the plankton community, is a key element in oceanic ecosystems and in biogeochemical cycling (Beltran-Heredia et al. 2017). The presence of it as the food of fish is determined by the water fertility aspect that can be reflected from the distribution of chlorophyll- α .

The purpose of this study was to determine the concentration and horizontal distribution pattern of chlorophyll- α and to figure out the correlation between chlorophyll- α and nutrient concentrations in the Gorontalo Bay.

MATERIALS AND METHODS

Water samples were carried out twice in June and July 2017. Water samples were collected from five stations dissimilar in land use. In the mainland near the site 1, there are rare resident settlements; near, from site 2 there are no human activities yet because of a steep cliff presence. Moreover, land use near the site 3 is Bone River estuary. In the site 4 there is an oil port and in the site 5 there are densely populated settlements. Sampling at each station was performed

out on 3 sub-stations by dragging the line-transect to the offshore as presented on the sampling map on the Fig. 1.

The samples for analysis of chlorophyll- α and nutrient concentration were collected from fifteen different points then compiled into five sample bottles and taken at Hydrobiology Laboratory, Environment and Waters Biotechnology division, Universitas Brawijaya. Analysis of water samples was made referring to APHA standard procedures (APHA 1989). The water samples were collected in the column water horizontally by using plankton net (Tuney & Maroulakis 2014). The net was held by the side of the boat (while the boat was moving slowly) for approximately 1.5 minutes. A slight turn performed with the boat so that the net was towed from the inner side of the turn to avoid drifting the net under the boat.

The pigment form (chlorophyll- α) concentration was estimated by using spectrophotometer (Rice et al. 2014). The absorbance at 664 nm was used to determine the chlorophyll- α concentration in the extract through the calculation by inserting the corrected optical densities in the following equations:

$$\text{Chlorophyll} - \alpha = 11.85 (\text{absorbance } 664 \text{ nm}) - 1.54 (\text{absorbance } 674 \text{ nm}) - 0.08 (\text{absorbance } 630 \text{ nm}) \dots (1)$$

Where, absorbance 664, 647 and 630 nm = corrected

optical densities (with a 1cm light path) at the wavelength.

After determining the concentration of the pigment extract, the amount of pigment per unit volume was calculated as follows:

$$\text{Chlorophyll} - \alpha, \frac{\text{mg}}{\text{m}^3} = \frac{C_a \times \text{extract volume, L}}{\text{Volume of sample, m}^3} \dots (2)$$

DATA ANALYSIS

Data were analysed by statistical software SPSS and Microsoft Office Excel 2010. Data were subjected to correlate and bi-variety test to find significant relationship between chlorophyll- α and nutrient concentration, while *t*-test to find significant distinction between nutrients concentration during sampling ($p < 0.05$) considered being significantly different. In addition, the distribution of chlorophyll- α concentrations were visualized by *ArcGIS* version.10 software with spatial interpolation technique.

RESULTS AND DISCUSSION

Concentration and Distribution of Chlorophyll- α in the Gorontalo Bay

The concentration of chlorophyll- α among the five stations was varied from 0.984 to 3.740 $\text{mg} \cdot \text{m}^{-3}$ during the two sampling times, June and July (Fig. 2). Averagely, the concentration of chlorophyll- α recorded during sampling was

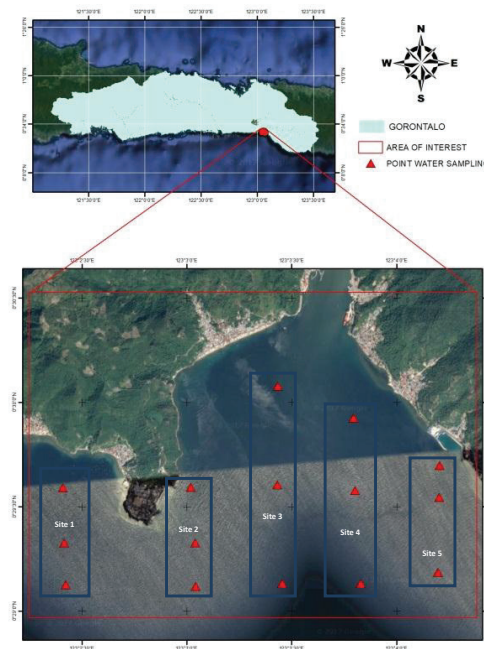


Fig.1: Sampling sites in the Gorontalo Bay.

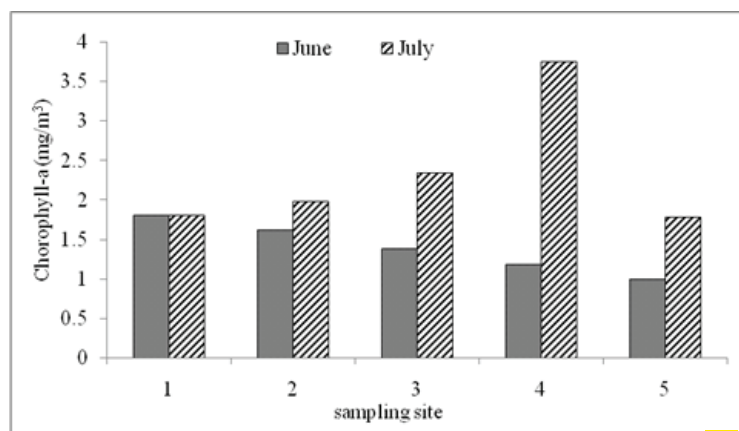


Fig. 2: Chlorophyll- α in the Gorontalo Bay at five sampling sites between June and July ($p < 0.05$).

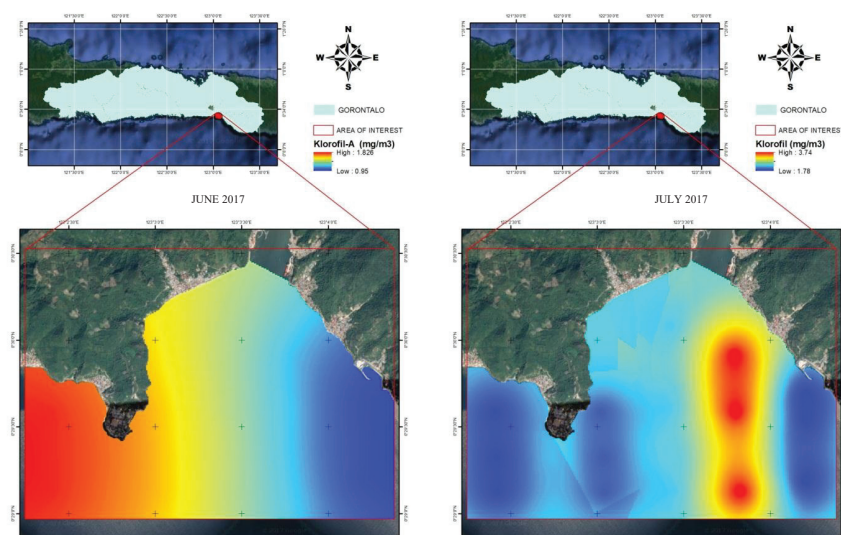


Fig. 3: Horizontal distribution of chlorophyll- α in the Gorontalo Bay in June and July 2017.

higher in July than that in June. Furthermore, the value of chlorophyll- α in the station 4 in July was the highest with the number of $3.744 \text{ mg} \cdot \text{m}^{-3}$, on the other hand the lowest concentration was in the station 5 in June with the chlorophyll of $0.9844 \text{ mg} \cdot \text{m}^{-3}$.

The chlorophyll- α surface concentration in the Gorontalo Bay in June was higher than that of chlorophyll- α in July. This is because a day before the sampling in July there was rain, therefore the inorganic materials that are the source of food for phytoplankton came in the bay waters through run-off. It is generally accepted that phytoplankton biomass can be reflected by concentration of chlorophyll- α (Larsson

et al. 2017).

Being the predominant pigment in phytoplankton cells, chlorophyll- α has been long used as a proxy for estimating the standing stocks of phytoplankton biomass in the water column. The latter is of major importance, as phytoplankton plays a central role in the structure and functioning of aquatic ecosystems, while its abundance reflects the trophic state of a water body (Mandalakis et al. 2017). Moreover, Fig. 3 depicts that chlorophyll- α in June 2017 was different from that of July 2017.

Based on the visualization results of horizontal distribution of chlorophyll- α (Fig. 3), it showed that the chlo-

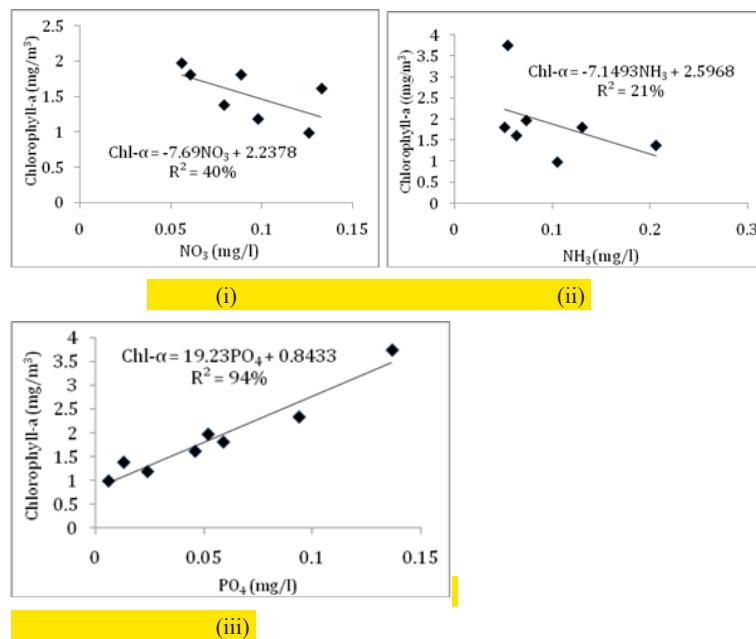


Fig. 4: Simple correlation between chlorophyll- α and (i) NO₃ (ii) NH₃ and PO₄ (iii) concentration in the Gorontalo Bay.

rophyll- α distributed highly in the western area of the bay in June 2017 and in the eastward revealed low concentration. Furthermore, different trend was shown in July 2017 as there was a change in the horizontal distribution pattern of chlorophyll- α . In July the eastern part of the waters has a high concentration of chlorophyll- α , while in the west it has low chlorophyll- α value. This fact indirectly indicates that the trophic status on the west and east parts of Gorontalo Bay in these two months is altered.

The main factor suspected to cause this spreading pattern distribution is a seasonal reversing wind season. Local fishermen informed that in June 2017, it was the end of wet season where the local wind moves from eastward to westward. Otherwise, in July it was the east wind season where the wind blows from westward to eastward. Allahdadi et al. (2017) identified that coastal current and its spatial distribution were significantly affected by open boundary conditions. Wind controls the movement of water in semi-enclosed bay of large shallow Lake Taihu, China (Li et al. 2017). The movement of wind causes a water mass transfer in the semi-enclosed Gorontalo bay which has chlorophyll- α .

Relationship Between Chlorophyll- α and Nutrient Concentrations in the Gorontalo Bay

The concentrations of ammonia, nitrate and phosphate in the waters of Gorontao Bay in June and July of 2017 were

relatively different. In the Gulf of Gorontalo in June and July, the ammonia concentration was $0.116 \pm 0.213 \text{ mg.m}^{-3}$ with the least value of 0.035 mg.m^{-3} and the greatest value of 0.336 mg.m^{-3} . Nitrate concentration was $0.091 \pm 0.074 \text{ mg.m}^{-3}$ with the lowest value of 0.042 mg.m^{-3} and the highest of 0.146 mg.m^{-3} . The concentration of phosphate was $0.047 \pm 0.095 \text{ mg.m}^{-3}$ with the lowest concentration of 0.003 mg.m^{-3} and the highest of 0.137 mg.m^{-3} . Phosphate concentrations in waters are lower than nitrogen (ammonia and nitrate). This is because the phosphorus has been considered a key limiting nutrient in marine systems (Redfield 1958).

The relationship between chlorophyll- α concentration with nutrients, ammonia, nitrate, and phosphate is presented in Fig. 4. It can be seen from the figure that there is a negative correlation between chlorophyll- α and ammonia and nitrate. Although based on *t*-test results the data showed no significant correlation of chlorophyll- α concentrations to ammonia and nitrate. The determination coefficient between chlorophyll- α and ammonia and nitrate was 40% and 21% respectively. Balali et al. (2013) stated that there is a significant negative correlation between chlorophyll- α and nitrate ($R^2 = 26.1\%$) and ammonia ($R^2 = 11\%$) as the amount of chlorophyll- α was high when the amounts of nitrate and ammonia were the lowest.

Otherwise, a positive correlation is indicated by the relationship between chlorophyll- α concentration and phosphate concentration in the waters of the Gorontalo Bay with

a coefficient of determination of 94%. Furthermore, there is a positive correlation between chlorophyll- α and phosphate in the waters (Magumba et al. 2013, Hakanson & Eklund 2010, Davis & Cornwell 1991).

CONCLUSIONS

There was a positive and significant relationship between chlorophyll- α and phosphate ($p < 0.01$) but no significant correlation between chlorophyll- α and nitrate ($p > 0.01$) and ammonia ($p > 0.01$) in the Gorontalo Bay in June and July 2017. In addition, the chlorophyll- α concentration in the Gorontalo Bay in June and July 2017 ranged from 0.984 to 3.744 mg.L⁻¹.

REFERENCES

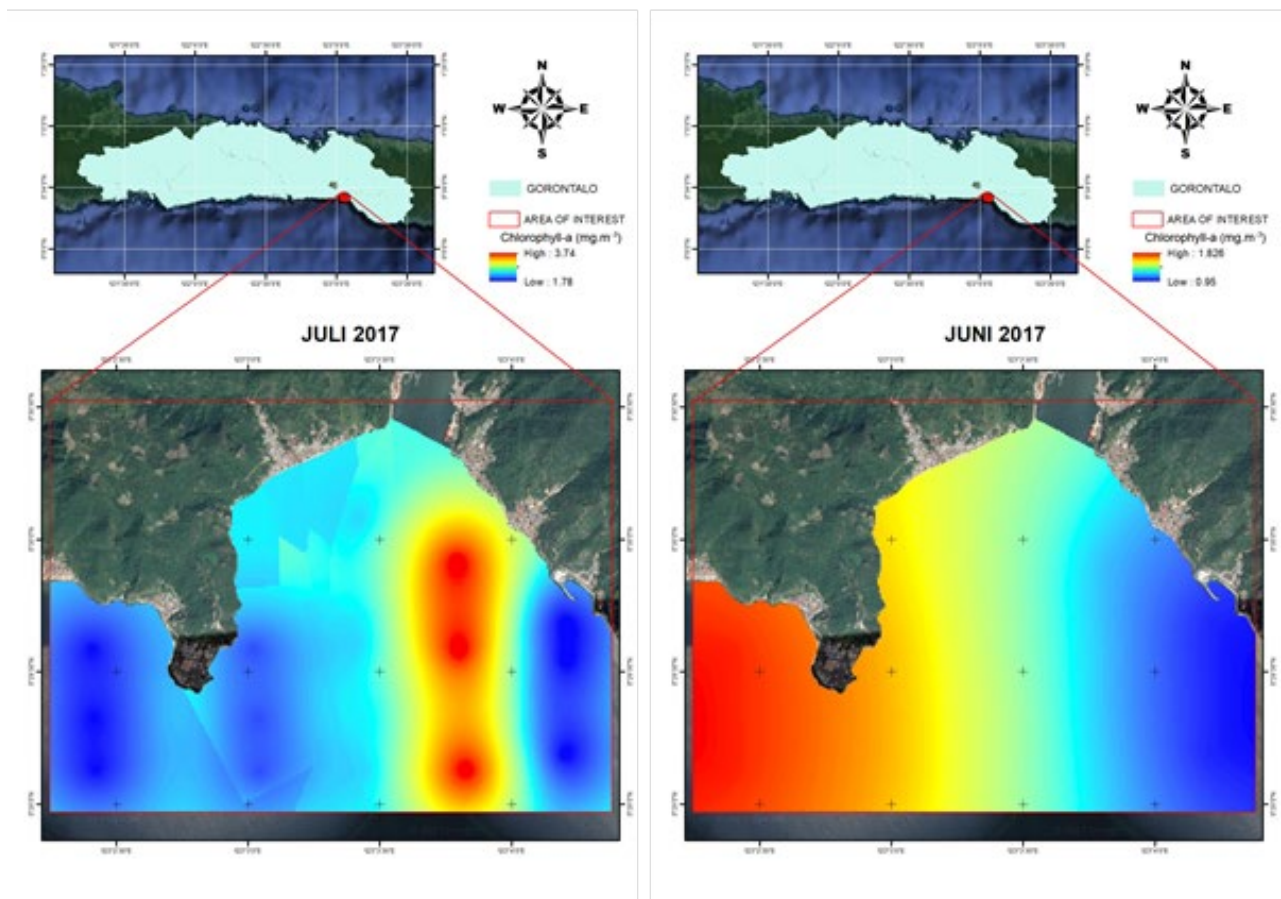
- Allahdadi, M.N., Jose, F., D'Sa E.J. and Ko, D.S. 2017. Effect of wind, river discharge, and outer-shelf phenomena on circulation dynamics of the Atchafalaya Bay and shelf. *Ocean Engineering*, 129: 567-580.
- APHA 1989. Standard methods for the Examination of Water and Wastewater. American Public Health Association (APHA), American Water Works Association (AWWA) and Water Pollution Control Federation (WPCF). 17th ed., Washington, pp. 1193.
- Balali, S., Hoseini, A., Ghorbani, R., Kordi, H. and Khozani, E.A. 2013. Relationships between nutrients and chlorophyll *a* concentration in the international Alma Gol Wetland, Iran. *International Journal of Aquatic Biology*, 1(2): 68-75.
- Beltrán-Heredia, E., Aksnes, D.L. and Cao, F.J. 2017. Phytoplankton size scaling with nutrient concentration. *Marine Ecology Progress Series*, 571: 59-64.
- Cloer, J.E., Abreu, P.C., Carstensen, J., Chauvaud, L., Elmgren, R., Grall, J., Greening, H., Johansson, J.O.R., Kahru, M., Sherwood, E.T., Xu, J. and Yin, K. 2016. Human activities and climate variability drive fast-paced change across the world's estuarine-coastal ecosystems. *Global Change Biology*, 22: 513-529.
- Davis, M.L. and Cornwell, D.A. 1991. *Introduction to Environmental Engineering*. Second edition. Mc-Graw-Hill, Inc., New York, pp. 822.
- Hakanson, L. and Eklund, J.M. 2010. Relationships between chlorophyll, salinity, phosphorus, and nitrogen in lakes and marine areas. *Journal of Coastal Research*, 263: 412-423.
- Larsson, M.E., Ajani, P.A., Rubio, A.M., Guise, K., McPherson, R.G., Brett, S.J., Davies, K.P. and Doblin, M.A. 2017. Long-term perspective on the relationship between phytoplankton and nutrient concentrations in a southeastern Australian estuary. *Marine Pollution Bulletin*, 114(1): 227-238.
- Li, Y., Jalil, A., Du, W., Gao, X., Wang, J., Luo, L., Li, H., Dai, S., Hashim, S., Yu, Z. and Acharya, K. 2017. Wind induced reverse flow and vertical profile characteristics in a semi-enclosed bay of large shallow Lake Taihu, China. *Ecological Engineering*, 102: 224-233.
- Madin, E.M.P., Dill, L.M., Ridlon, A.D., Heithaus, M.R. and Warner, R.R. 2016. Human activities change marine ecosystems by altering predation risk. *Global Change Biology*, 22: 44-60.
- Magumba, D., Maruyama, A., Takagaki, M., Kato, A. and Kikuchi, M. 2013. Relationships between chlorophyll- α , phosphorus and nitrogen as fundamentals for controlling phytoplankton biomass in lakes. *Environmental Control in Biology*, 51(4): 179-185.
- Mandalakis, M., Stravinskaitė, A. and Lagaria, A. 2017. Ultrasensitive and high-throughput analysis of chlorophyll- α in marine phytoplankton extracts using a fluorescence microplate reader. *Anal. Bioanal. Chem.*, 409: 4539-4549.
- Österblom, H., Crona, B.I., Folke, C., Nystrom, M. and Troell, M. 2017. Marine ecosystem science on an intertwined planet. *Ecosystems*, 20: 54-61.
- Redfield, A.C. 1958. The biological control of chemical factors in the environment. *Am. Sci.*, 46: 205-221.
- Rice, E.W., Baird, R.B., Eaton, A.D. and Clesceri, L.S. 2012. APHA (American Public Health Association): Standard Method for The Examination of Water and Wastewater, 22th ed. Washington DC (US): AWWA (American Water Works Association) and WEF (Water Environment Federation).
- Tuney, I. and Maroulakis, M. 2014. *Phytoplankton Sampling Methods: Technical Assistance for Capacity Building on Water Quality Monitoring*. Ege University, Department of Biology, Turkey ENVECO S.A., Greece.

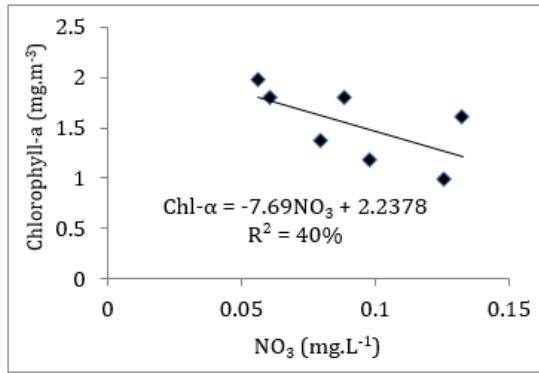
Equation 1:

$$\text{Chlorophyll} - \alpha \text{ (mg. L}^{-1}\text{)} = 11.85 \text{ (absorbance 664)} - 1.54 \text{ (absorbance 674)} - 0.08 \text{ (absorbance 630)}$$

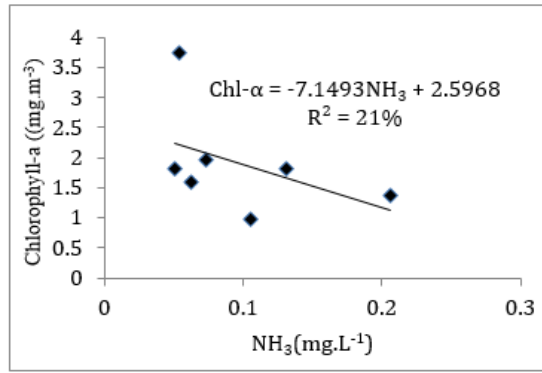
Equation 2:

$$\text{Chlorophyll} - \alpha \text{ (mg. m}^{-3}\text{)} = \frac{\text{Chlorophyll} - \alpha \text{ (mg. L}^{-1}\text{)} \times \text{extract volume (L)}}{\text{Volume of sample (m}^3\text{)}}$$

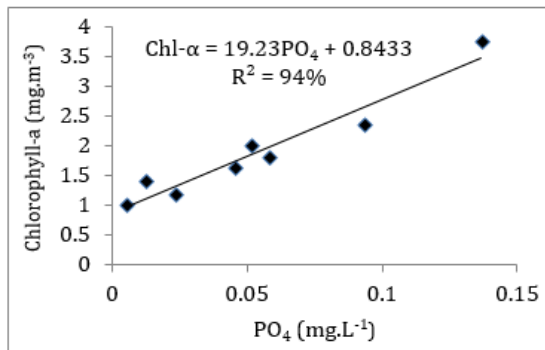




(i)



(ii)



(iii)

