

## **Perintah perbaikan dari Reviewer**



Sulastrisad, S.Pi, M.Sc, M.Si &lt;sulastrisad@ub.ac.id&gt;

---

**RE: submit paper - neptjournal.com**

21 messages

**NEPT Journal** <contact@neptjournal.com>

29 janvier 2019 à 16:02

À : sulastrisad@ub.ac.id

Dear Sir/Madam,  
Please give the original reference and formula for chlorophyll determination in methods. The corrected paper may please be sent directly at this e-mail. Please maintain the trail of the correspondence so as to keep the track on the earlier correspondence.  
P.K. Goel

-----Original Message-----

From: Webmaster [mailto:[Do\\_Not\\_reply@neptjournal.com](mailto:Do_Not_reply@neptjournal.com)]

Sent: Sunday, January 27, 2019 1:11 PM

To: [contact@neptjournal.com](mailto:contact@neptjournal.com)Subject: submit paper - [neptjournal.com](http://neptjournal.com)Subject : submit paper - [neptjournal.com](http://neptjournal.com)-----  
Name of Author : Sulastrisad-----  
Residential Address : Fakultas Perikanan dan Ilmu Kelautan Universitas

Brawijaya Jl. veteran

City : Malang

State : East Java

Pincode : 65145

country : Indonesia

Tel No. : +62-341-553512

Mobile : -8524041326

Email Id : [sulastrisad@ub.ac.id](mailto:sulastrisad@ub.ac.id)-----  
Title of Paper : Horizontal distribution of chlorophyll-a in the  
Gorontalo BayAuthors of the paper in sequence as in paper : Miftahul Khair Kadim, Nuralim  
Pasingi, and SulastrisadInstitution where the work has been carried out : Universitas Negeri  
Gorontalo-----  
Paper URL : [http://www.neptjournal.com/attach/Horizontal](http://www.neptjournal.com/attach/Horizontal%20distribution%20of%20Chlorophyll-a%20in%20the%20Gorontalo%20bay.docx) distribution of  
Chlorophyll-a in the Gorontalo bay.docx-----  
IP Address : 125.166.119.222Browser : Mozilla/5.0 (Windows NT 10.0; Win64; x64) AppleWebKit/537.36  
(KHTML, like Gecko) Chrome/71.0.3578.98 Safari/537.36

---

**Sulastrisad, S.Pi, M.Sc, M.Si** <sulastrisad@ub.ac.id>

29 janvier 2019 à 16:06

À : miftahulhairkadim@ung.ac.id, Khair Kadim &lt;khairkadim@gmail.com&gt;

# **Instruksi Proof reading**

Dear Sir/Madam,

We are sending your paper **D-928** for proof reading in pdf format. Please correct the proof carefully. You may give special attention to authors' names and affiliations, and to see that all the Tables, Figures and References are properly quoted in the text. You can make the proof reading by "sticky notes" or any other editing tool directly on the pdf file only. Please do not make major corrections in the text as they will be difficult to incorporate. The final layout of the paper shall be made only after proof corrections. If the corrections are provided in WORD file, mark them with red colour so as to identify them. Please send the corrected proof immediately so as to avoid the delay in release of the journal.

P.K.Goel

<https://mail.google.com/mail/u/0?ik=c79bb87756&view=pt&search=all&permthid=thread-f%3A1623980985589112262&simpl=msg-f%3A1623980...> 4/8

9/7/21, 1:49 PM Messagerie Universitas Brawijaya - RE: submit paper - neptjournal.com

Editor

---

**From:** NEPT Journal [mailto:contact@neptjournal.com]

**Sent:** 14 June 2019 12:58

**To:** 'Sulastris Arsad,S.Pi,M.Sc,M.Si'

**Subject:** RE: submit paper - [neptjournal.com](https://mail.google.com/mail/u/0?ik=c79bb87756&view=pt&search=all&permthid=thread-f%3A1623980985589112262&simpl=msg-f%3A1623980...)

Dear Sir,

Payment received. Sending the final acceptance letter for the paper D-

928. P.K.Goel

**From:** Sulastris Arsad,S.Pi,M.Sc,M.Si [mailto:[sulastrisarsad@ub.ac.id](mailto:sulastrisarsad@ub.ac.id)]

**Sent:** 12 June 2019 18:01

[Texte des messages précédents

masqué] [Texte des messages

précédents masqué]



**D-928-Proof.pdf**

938K



# Horizontal Distribution of Chlorophyll- $\alpha$ in the Gorontalo Bay

Miftahul Khair Kadim\*, Nuralim Pasingi\* and Sulastris Arsad\*\*

\*Department of Aquatic Resources Management, Fisheries and Marine Science Faculty, Universitas Negeri Gorontalo, Gorontalo 96128, Indonesia

\*\*Department of Aquatic Resources Management, Fisheries and Marine Science Faculty, Universitas Brawijaya, Malang 65145, Indonesia

Nat. Env. & Poll. Tech.  
Website: [www.neptjournal.com](http://www.neptjournal.com)

Received: 19-02-2019

Accepted:

## Key Words:

Ammonia  
Gorontalo Bay  
Chlorophyll- $\alpha$  distribution  
Nitrate  
Phosphate

## ABSTRACT

The concentration of chlorophyll- $\alpha$  in the Gorontalo Bay is necessary to be observed since it could describe the condition of water richness. The semi-enclosed Gorontalo Bay morphology causes the status of water fertility to be largely determined by the input of inorganic or organic materials originating from the mainland. This study aimed to figure out the concentration and horizontal distribution pattern of the chlorophyll- $\alpha$  then further to decide the relationship between the concentration of chlorophyll- $\alpha$  and the nutrients in the Gorontalo Bay. There were fifteen sub-sampling sites selected based on coastal and ecological characteristics. Results showed that the distribution pattern of chlorophyll- $\alpha$  in the Gorontalo Bay in June and July 2017 was dissimilar and its concentration ranged from 0.984 to 3.744 mg.m<sup>-3</sup>. In addition, there was a positive and substantial relationship between chlorophyll- $\alpha$  and phosphate ( $p < 0.01$ ). Nonetheless, there was no significant correlation between chlorophyll- $\alpha$  and nitrate ( $p > 0.01$ ) and ammonia ( $p > 0.01$ ).

## INTRODUCTION

Bay ecosystem is very dynamic because of the influence of the mainland and human impacts (Madin et al. 2016, Österblom et al. 2017). Physical, chemical, and biological conditions depend on inputs which are derived from land activities. Ecosystem balance and sustainability of aquatic biota of bay become an essential aspect that must be maintained. Water fertility is one point that contributes greatly in ensuring the balance of the marine ecosystem. The distribution of chlorophyll- $\alpha$  on the water surface is an indicator which can be used to estimate water fertility.

Geographically Gorontalo Bay is a part of Tomini Bay, morphologically Gorontalo Bay is semi-enclosed waters then likely that the profile of surface chlorophyll- $\alpha$  distribution in these waters is local in type and different from the distribution of chlorophyll- $\alpha$  in Tomini Bay. The two main points that underlie the importance of studying the distribution of chlorophyll- $\alpha$  in the Gorontalo Bay are ecological and economic roles. Ecologically, the Gulf of Gorontalo is still semi-encircled waters to enable inputs from terrestrial activities that carry organic or inorganic materials which are very decisive for water fertility. Human activities in the mainland around the waters of Gorontalo Bay are relatively varied. Output and waste from human activities containing organic or inorganic materials flow into the waters through rivers and streams during rain (Cloern et al. 2016).

Gorontalo Bay has an economical purpose as this bay is a strategic zone for fishing by local fishermen. Local people whose main livelihoods are fishermen depend mainly on catches. The availability of the abundant and varied fish of the bay is meanderingly influenced by the availability of diet. Phytoplankton, the autotrophic part of the plankton community, is a key element in oceanic ecosystems and in biogeochemical cycling (Beltran-Heredia et al. 2017). The presence of it as the food of fish is determined by the water fertility aspect that can be reflected from the distribution of chlorophyll- $\alpha$ .

The purpose of this study was to determine the concentration and horizontal distribution pattern of chlorophyll- $\alpha$  and to figure out the correlation between chlorophyll- $\alpha$  and nutrient concentrations in the Gorontalo Bay.

## MATERIALS AND METHODS

Water samples were carried out twice in June and July 2017. Water samples were collected from five stations dissimilar in land use. In the mainland near the site 1, there are rare resident settlements; near, from site 2 there are no human activities yet because of a steep cliff presence. Moreover, land use near the site 3 is Bone River estuary. In the site 4 there is an oil port and in the site 5 there are densely populated settlements. Sampling at each station was performed

out on 3 sub-stations by dragging the line-transect to the offshore as presented on the sampling map on the Fig. 1.

The samples for analysis of chlorophyll- $\alpha$  and nutrient concentration were collected from fifteen different points then compiled into five sample bottles and taken at Hydrobiology Laboratory, Environment and Waters Biotechnology division, Universitas Brawijaya. Analysis of water samples was made referring to APHA standard procedures (APHA 1989). The water samples were collected in the column water horizontally by using plankton net (Tuney & Maroulakis 2014). The net was held by the side of the boat (while the boat was moving slowly) for approximately 1.5 minutes. A slight turn performed with the boat so that the net was towed from the inner side of the turn to avoid drifting the net under the boat.

The pigment form (chlorophyll- $\alpha$ ) concentration was estimated by using spectrophotometer (Rice et al. 2014). The absorbance at 664 nm was used to determine the chlorophyll- $\alpha$  concentration in the extract through the calculation by inserting the corrected optical densities in the following equations:

$$\begin{aligned} \text{Chlorophyll} - \alpha &= 11.85 (\text{absorbance } 664 \text{ nm}) \\ &- 1.54 (\text{absorbance } 674 \text{ nm}) - 0.08 (\text{absorbance } 630 \text{ nm}) \\ &\dots(1) \end{aligned}$$

Where, absorbance 664, 647 and 630 nm = corrected

optical densities (with a 1cm light path) at the wavelength.

After determining the concentration of the pigment extract, the amount of pigment per unit volume was calculated as follows:

$$\text{Chlorophyll} - \alpha, \frac{\text{mg}}{\text{m}^3} = \frac{C_a \times \text{extract volume, } L}{\text{Volume of sample, } \text{m}^3} \dots(2)$$

## DATA ANALYSIS

Data were analysed by statistical software SPSS and Microsoft Office Excel 2010. Data were subjected to correlate and bi-variety test to find significant relationship between chlorophyll- $\alpha$  and nutrient concentration, while *t*-test to find significant distinction between nutrients concentration during sampling ( $p < 0.05$ ) considered being significantly different. In addition, the distribution of chlorophyll- $\alpha$  concentrations were visualized by *ArcGIS* version.10 software with spatial interpolation technique.

## RESULTS AND DISCUSSION

### Concentration and Distribution of Chlorophyll- $\alpha$ in the Gorontalo Bay

The concentration of chlorophyll- $\alpha$  among the five stations was varied from 0.984 to 3.740  $\text{mg} \cdot \text{m}^{-3}$  during the two sampling times, June and July (Fig. 2). Averagely, the concentration of chlorophyll- $\alpha$  recorded during sampling was

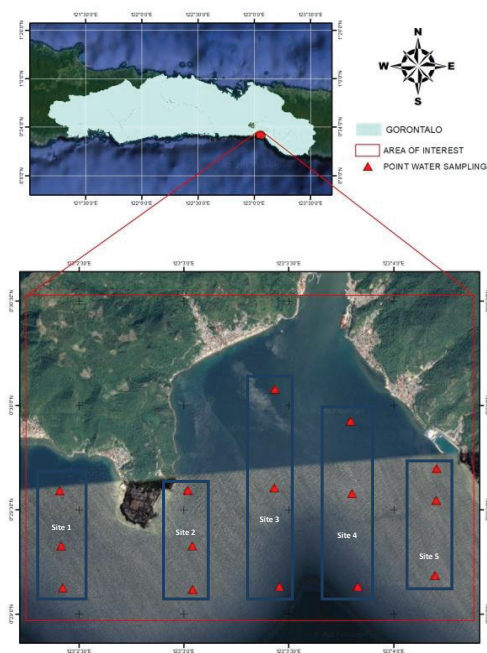


Fig.1: Sampling sites in the Gorontalo Bay.

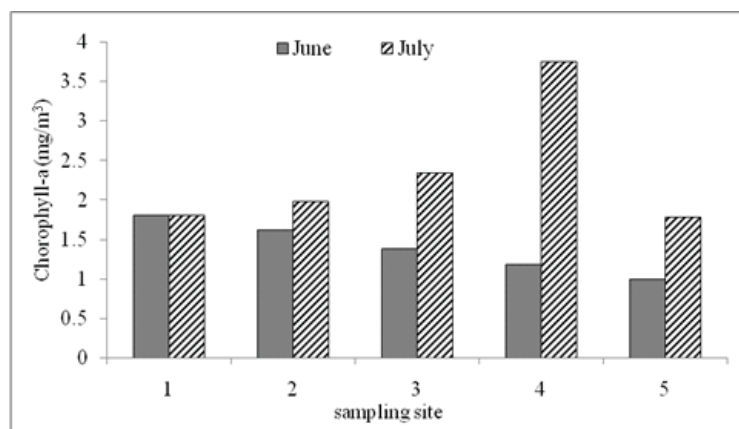


Fig. 2: Chlorophyll- $\alpha$  in the Gorontalo Bay at five sampling sites between June and July ( $p < 0.05$ ).

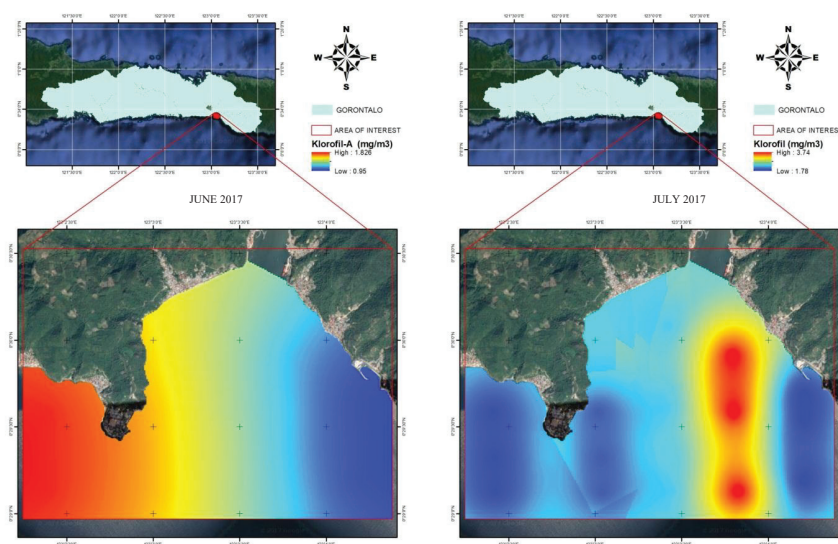


Fig. 3: Horizontal distribution of chlorophyll- $\alpha$  in the Gorontalo Bay in June and July 2017.

higher in July than that in June. Furthermore, the value of chlorophyll- $\alpha$  in the station 4 in July was the highest with the number of  $3.744 \text{ mg} \cdot \text{m}^{-3}$ , on the other hand the lowest concentration was in the station 5 in June with the chlorophyll of  $0.9844 \text{ mg} \cdot \text{m}^{-3}$ .

The chlorophyll- $\alpha$  surface concentration in the Gorontalo Bay in June was higher than that of chlorophyll- $\alpha$  in July. This is because a day before the sampling in July there was rain, therefore the inorganic materials that are the source of food for phytoplankton came in the bay waters through run-off. It is generally accepted that phytoplankton biomass can be reflected by concentration of chlorophyll- $\alpha$  (Larsson

et al. 2017).

Being the predominant pigment in phytoplankton cells, chlorophyll- $\alpha$  has been long used as a proxy for estimating the standing stocks of phytoplankton biomass in the water column. The latter is of major importance, as phytoplankton plays a central role in the structure and functioning of aquatic ecosystems, while its abundance reflects the trophic state of a water body (Mandalakis et al. 2017). Moreover, Fig. 3 depicts that chlorophyll- $\alpha$  in June 2017 was different from that of July 2017.

Based on the visualization results of horizontal distribution of chlorophyll- $\alpha$  (Fig. 3), it showed that the chlo-

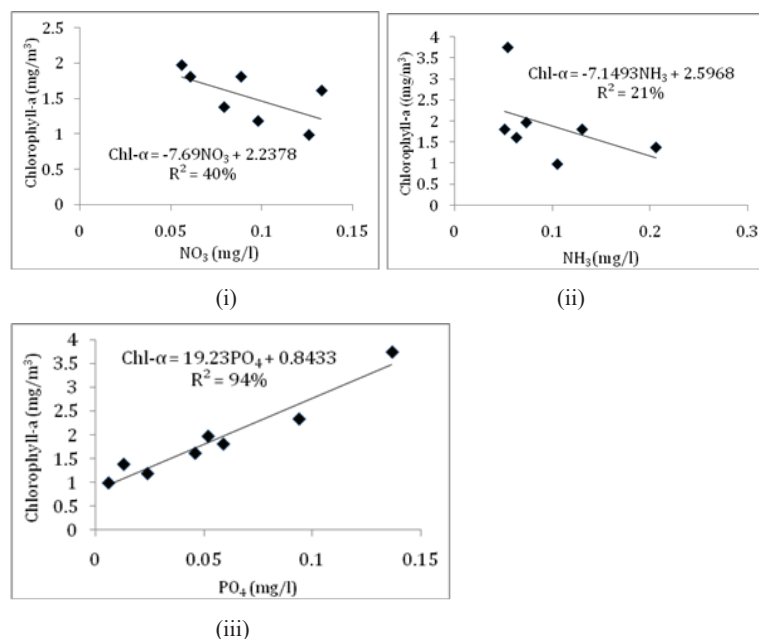


Fig. 4: Simple correlation between chlorophyll- $\alpha$  and (i) NO<sub>3</sub> (ii) NH<sub>3</sub> and PO<sub>4</sub> (iii) concentration in the Gorontalo Bay.

rophyll- $\alpha$  distributed highly in the western area of the bay in June 2017 and in the eastward revealed low concentration. Furthermore, different trend was shown in July 2017 as there was a change in the horizontal distribution pattern of chlorophyll- $\alpha$ . In July the eastern part of the waters has a high concentration of chlorophyll- $\alpha$ , while in the west it has low chlorophyll- $\alpha$  value. This fact indirectly indicates that the trophic status on the west and east parts of Gorontalo Bay in these two months is altered.

The main factor suspected to cause this spreading pattern distribution is a seasonal reversing wind season. Local fishermen informed that in June 2017, it was the end of wet season where the local wind moves from eastward to westward. Otherwise, in July it was the east wind season where the wind blows from westward to eastward. Allahdadi et al. (2017) identified that coastal current and its spatial distribution were significantly affected by open boundary conditions. Wind controls the movement of water in semi-enclosed bay of large shallow Lake Taihu, China (Li et al. 2017). The movement of wind causes a water mass transfer in the semi-enclosed Gorontalo bay which has chlorophyll- $\alpha$ .

### Relationship Between Chlorophyll- $\alpha$ and Nutrient Concentrations in the Gorontalo Bay

The concentrations of ammonia, nitrate and phosphate in the waters of Gorontalo Bay in June and July of 2017 were

relatively different. In the Gulf of Gorontalo in June and July, the ammonia concentration was  $0.116 \pm 0.213 \text{ mg.m}^{-3}$  with the least value of  $0.035 \text{ mg.m}^{-3}$  and the greatest value of  $0.336 \text{ mg.m}^{-3}$ . Nitrate concentration was  $0.091 \pm 0.074 \text{ mg.m}^{-3}$  with the lowest value of  $0.042 \text{ mg.m}^{-3}$  and the highest of  $0.146 \text{ mg.m}^{-3}$ . The concentration of phosphate was  $0.047 \pm 0.095 \text{ mg.m}^{-3}$  with the lowest concentration of  $0.003 \text{ mg.m}^{-3}$  and the highest of  $0.137 \text{ mg.m}^{-3}$ . Phosphate concentrations in waters are lower than nitrogen (ammonia and nitrate). This is because the phosphorus has been considered a key limiting nutrient in marine systems (Redfield 1958).

The relationship between chlorophyll- $\alpha$  concentration with nutrients, ammonia, nitrate, and phosphate is presented in Fig. 4. It can be seen from the figure that there is a negative correlation between chlorophyll- $\alpha$  and ammonia and nitrate. Although based on *t*-test results the data showed no significant correlation of chlorophyll- $\alpha$  concentrations to ammonia and nitrate. The determination coefficient between chlorophyll- $\alpha$  and ammonia and nitrate was 40% and 21% respectively. Balali et al. (2013) stated that there is a significant negative correlation between chlorophyll- $\alpha$  and nitrate ( $R^2 = 26.1\%$ ) and ammonia ( $R^2 = 11\%$ ) as the amount of chlorophyll- $\alpha$  was high when the amounts of nitrate and ammonia were the lowest.

Otherwise, a positive correlation is indicated by the relationship between chlorophyll- $\alpha$  concentration and phosphate concentration in the waters of the Gorontalo Bay with



a coefficient of determination of 94%. Furthermore, there is a positive correlation between chlorophyll- $\alpha$  and phosphate in the waters (Magumba et al. 2013, Hakanson & Eklund 2010, Davis & Cornwell 1991).

## CONCLUSIONS

There was a positive and significant relationship between chlorophyll- $\alpha$  and phosphate ( $p < 0.01$ ) but no significant correlation between chlorophyll- $\alpha$  and nitrate ( $p > 0.01$ ) and ammonia ( $p > 0.01$ ) in the Gorontalo Bay in June and July 2017. In addition, the chlorophyll- $\alpha$  concentration in the Gorontalo Bay in June and July 2017 ranged from 0.984 to 3.744 mg.L<sup>-1</sup>.

## REFERENCES

- Allahdadi, M.N., Jose, F., D'Sa E.J. and Ko, D.S. 2017. Effect of wind, river discharge, and outer-shelf phenomena on circulation dynamics of the Atchafalaya Bay and shelf. *Ocean Engineering*, 129: 567-580.
- APHA 1989. Standard methods for the Examination of Water and Wastewater. American Public Health Association (APHA), American Water Works Association (AWWA) and Water Pollution Control Federation (WPCF). 17th ed., Washington, pp. 1193.
- Balali, S., Hoseini, A., Ghorbna, R., Kordi, H. and Khozani, E.A. 2013. Relationships between nutrients and chlorophyll *a* concentration in the international Alma Gol Wetland, Iran. *International Journal of Aquatic Biology*, 1(2): 68-75.
- Beltrán-Heredia, E., Aksnes, D.L. and Cao, F.J. 2017. Phytoplankton size scaling with nutrient concentration. *Marine Ecology Progress Series*, 571: 59-64.
- Cloer, J.E., Abreu, P.C., Carstensen, J., Chauvaud, L., Elmgren, R., Grall, J., Greening, H., Johansson, J.O.R., Kahru, M., Sherwood, E.T., Xu, J. and Yin, K. 2016. Human activities and climate variability drive fast-paced change across the world's estuarine-coastal ecosystems. *Global Change Biology*, 22: 513-529.
- Davis, M.L. and Cornell, D.A. 1991. Introduction to Environmental Engineering. Second edition. Mc-Graw-Hill, Inc., New York, pp. 822.
- Hakanson, L. and Eklund, J.M. 2010. Relationships between chlorophyll, salinity, phosphorus, and nitrogen in lakes and marine areas. *Journal of Coastal Research*, 263: 412-423.
- Larsson, M.E., Ajani, P.A., Rubio, A.M., Guise, K., McPherson, R.G., Brett, S.J., Davies, K.P. and Doblin, M.A. 2017. Long-term perspective on the relationship between phytoplankton and nutrient concentrations in a southeastern Australian estuary. *Marine Pollution Bulletin*, 114(1): 227-238.
- Li, Y., Jalil, A., Du, W., Gao, X., Wang, J., Luo, L., Li, H., Dai, S., Hashim, S., Yu, Z. and Acharya, K. 2017. Wind induced reverse flow and vertical profile characteristics in a semi-enclosed bay of large shallow Lake Taihu, China. *Ecological Engineering*, 102: 224-233.
- Madin, E.M.P., Dill, L.M., Ridlon, A.D., Heithaus, M.R. and Warner, R.R. 2016. Human activities change marine ecosystems by altering predation risk. *Global Change Biology*, 22: 44-60.
- Magumba, D., Maruyama, A., Takagaki, M., Kato, A. and Kikuchi, M. 2013. Relationships between chlorophyll- $\alpha$ , phosphorus and nitrogen as fundamentals for controlling phytoplankton biomass in lakes. *Environmental Control in Biology*, 51(4): 179-185.
- Mandalakis, M., Stravinskaitė, A. and Lagaria, A. 2017. Ultrasensitive and high-throughput analysis of chlorophyll- $\alpha$  in marine phytoplankton extracts using a fluorescence microplate reader. *Anal. Bioanal. Chem.*, 409: 4539-4549.
- Österblom, H., Crona, B.I., Folke, C., Nystrom, M. and Troell, M. 2017. Marine ecosystem science on an intertwined planet. *Ecosystems*, 20: 54-61.
- Redfield, A.C. 1958. The biological control of chemical factors in the environment. *Am. Sci.*, 46: 205-221.
- Rice, E.W., Baird, R.B., Eaton, A.D. and Clesceri, L.S. 2012. APHA (American Public Health Association): Standard Method for The Examination of Water and Wastewater, 22th ed. Washington DC (US): AWWA (American Water Works Association) and WEF (Water Environment Federation).
- Tuney, I. and Maroulakis, M. 2014. Phytoplankton Sampling Methods: Technical Assistance for Capacity Building on Water Quality Monitoring. Ege University, Department of Biology, Turkey ENVECO S.A., Greece.

---

**Sulastri Arsad,S.Pi,M.Sc,M.Si** <sulastriarsad@ub.ac.id> 21 novembre 2019 à 09:55 À : NEPT Journal  
<contact@neptjournal.com>  
Cc : miftahulhairkadim@ung.ac.id

Dear Editorial Team of NEPT

Journal,

Thank you for your email. We have already checked and have confirmed our manuscript, there are minor revisions (in yellow highlight) on pdf manuscript (file attached).

<https://mail.google.com/mail/u/0?ik=c79bb87756&view=pt&search=all&permthid=thread-f%3A1623980985589112262&simpl=msg-f%3A1623980...> 5/8

9/7/21, 1:49 PM Messagerie Universitas Brawijaya - RE: submit paper - neptjournal.com

Thank you for such collaboration.

Kind  
regards,  
Authors.

Sulastri ARSAD  
Lecturer and Researcher  
Faculty of Fisheries & Marine  
Science Universitas Brawijaya  
Malang, Indonesia 65145

[Texte des messages précédents masqué]

---

**D-928-Proof1.pdf**  
957K



---

**NEPT Journal** <contact@neptjournal.com> 21 novembre 2019 à 15:53 À : "Sulastri Arsad,S.Pi,M.Sc,M.Si"  
<sulastriarsad@ub.ac.id>

Received the corrected proof.

[Texte des messages précédents masqué]

---

**NEPT Journal** <contact@neptjournal.com> 22 novembre 2019 à 11:54 À : "Sulastri Arsad,S.Pi,M.Sc,M.Si"  
<sulastriarsad@ub.ac.id>

Dear Sir,

Please again check the equations 1 and 2 again. Eq. 1 does not have unit of Chlorophyll-a. The corrections in Eq. 2 also seem to be doubtful. Please check whether it is  $\text{mg.m}^3$  or  $\text{mg.mL}$  or  $\text{mg.L}$ . Please send the correct equations in WORD urgently.

P.K., Goel

[Texte des messages précédents masqué]

---

**Sulastri Arsad,S.Pi,M.Sc,M.Si** <sulastriarsad@ub.ac.id> 22 novembre 2019 à 13:00 À :  
miftahulhairkadim@ung.ac.id

----- Forwarded message -----

From: **NEPT Journal** <contact@neptjournal.com>

[Texte des messages précédents  
masqué] [Texte des messages  
précédents masqué]

---

**Sulastri Arsad,S.Pi,M.Sc,M.Si** <sulastriarsad@ub.ac.id> 23 novembre 2019 à 15:18 À : NEPT Journal  
<contact@neptjournal.com>  
Cc : miftahulhairkadim@ung.ac.id

Dear Editorial Team of NEPT

Journal,

The unit of Chlorophyll is according to standard method of APHA (mg. m<sup>-3</sup>). Thank you.

Kind  
regards,  
Authors.

Sulastri ARSAD  
Lecturer and Researcher  
Faculty of Fisheries & Marine  
Science Universitas Brawijaya

<https://mail.google.com/mail/u/0?ik=c79bb87756&view=pt&search=all&permthid=thread-f%3A1623980985589112262&simpl=msg-f%3A1623980...> 6/8

9/7/21, 1:49 PM Messagerie Universitas Brawijaya - RE: submit paper - neptjournal.com

Malang, Indonesia 65145

[Texte des messages précédents masqué]



---

**D-928-Proof1.pdf**  
981K