

BUKTI KORESPONDENSI

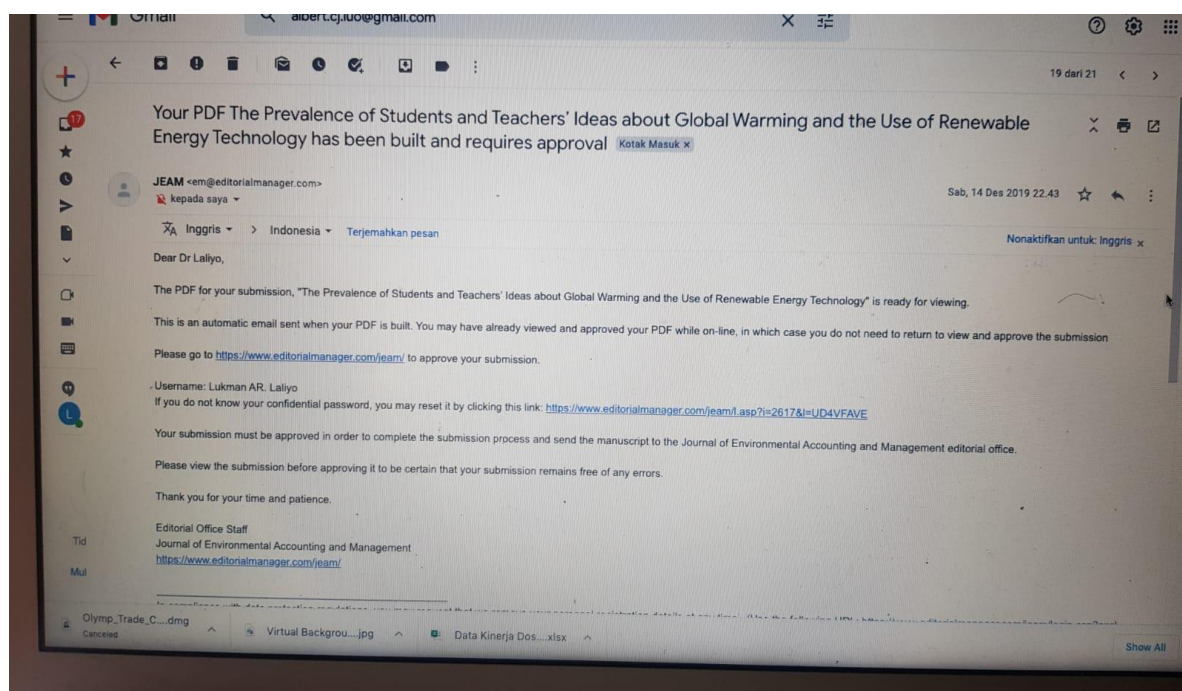
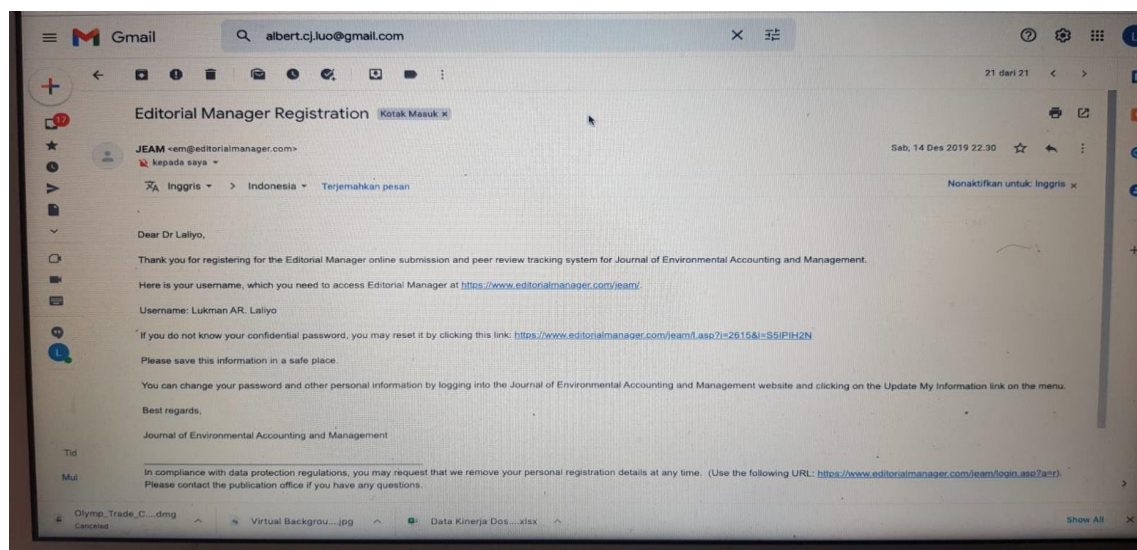
Judul : The Prevalence of Students and Teachers' Ideas about Global Warming and the Use of Renewable Energy Technology

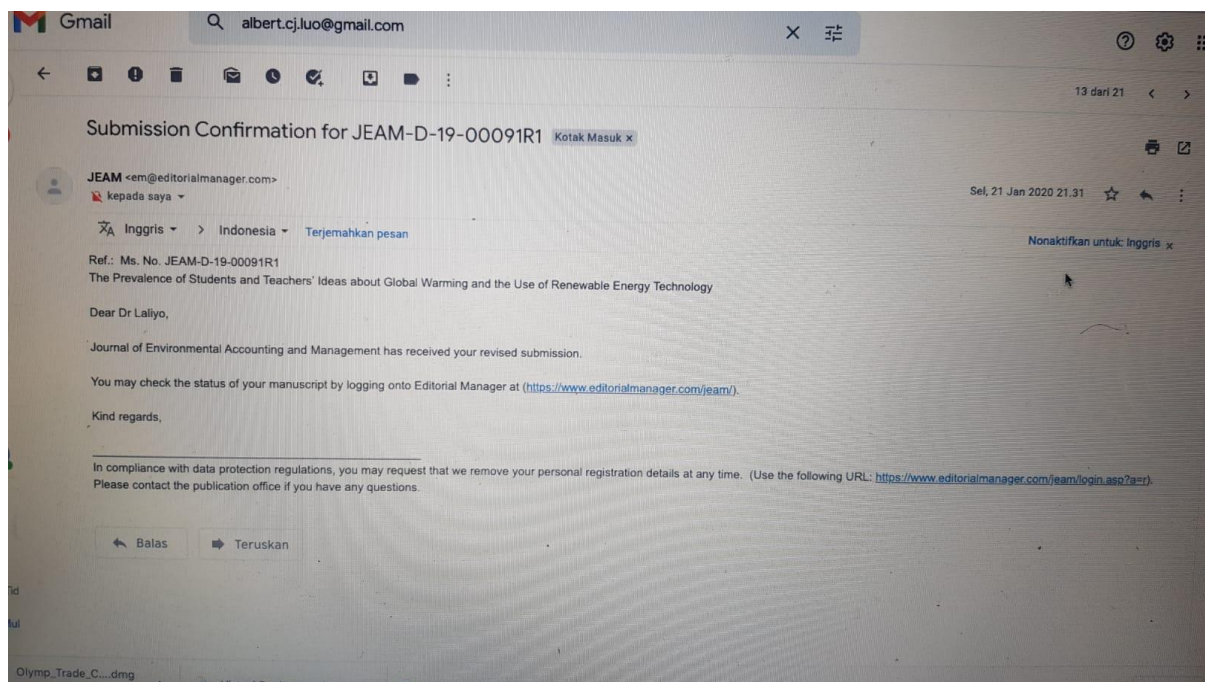
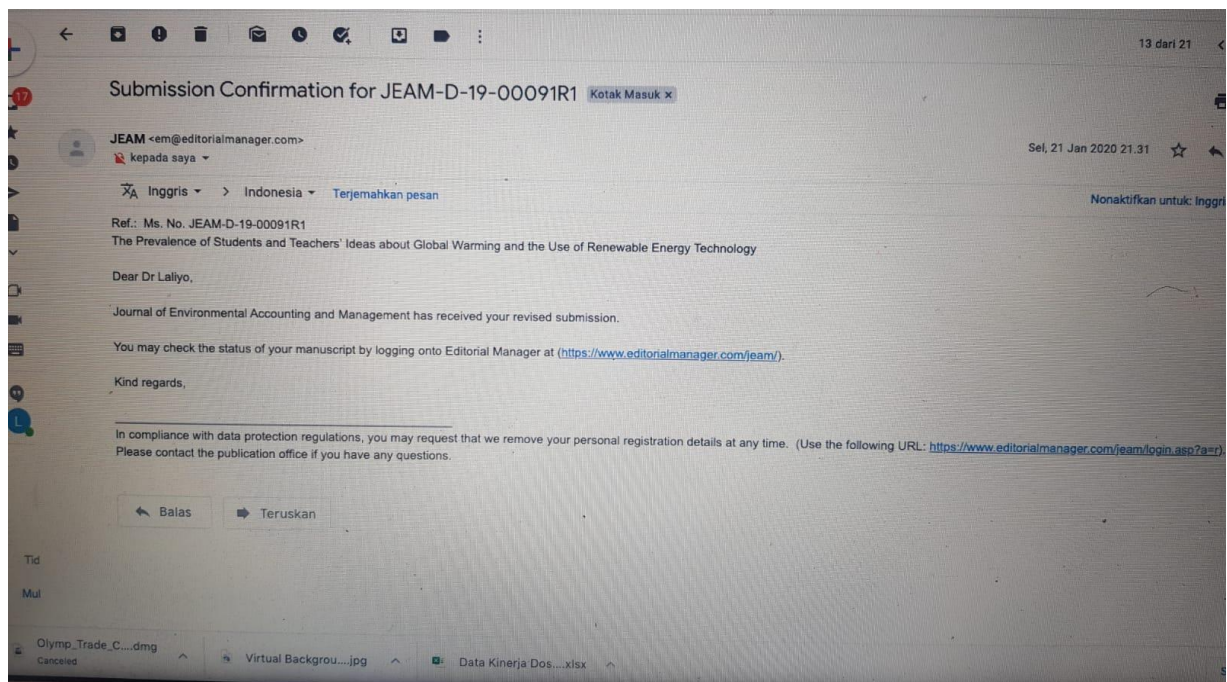
**Jurnal : Journal of Environmental Accounting and Management 8(3) (2020) 243-256.
DOI:10.5890/JEAM.2020.09.003**

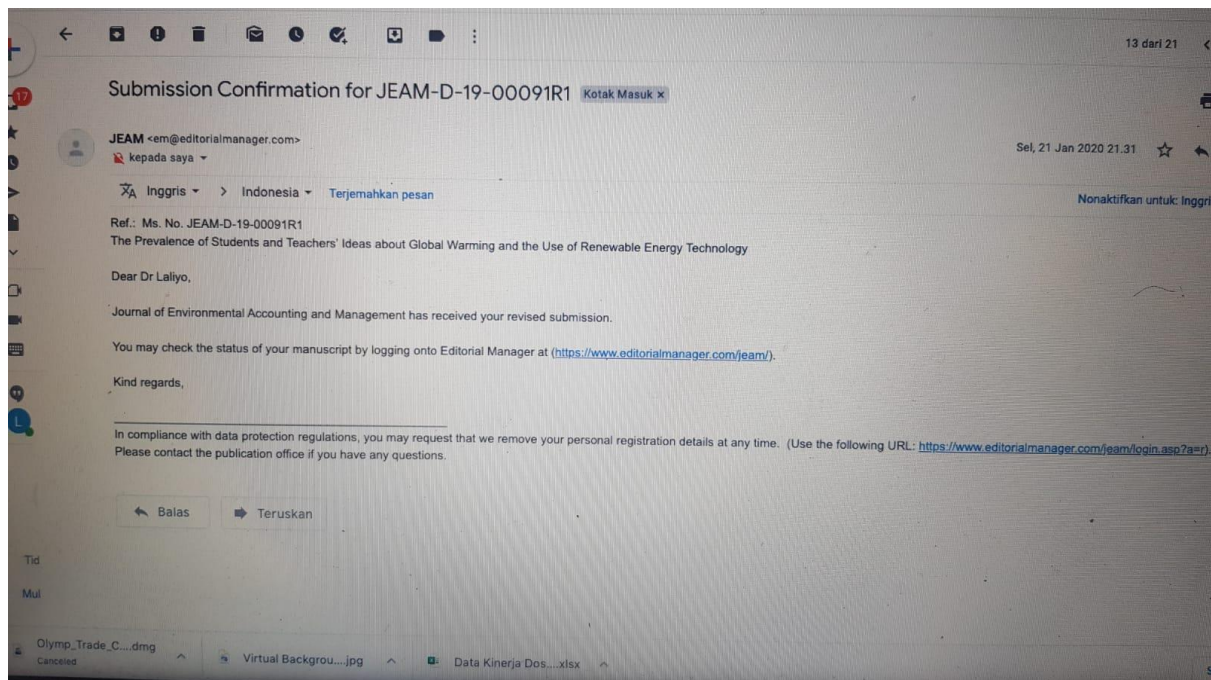
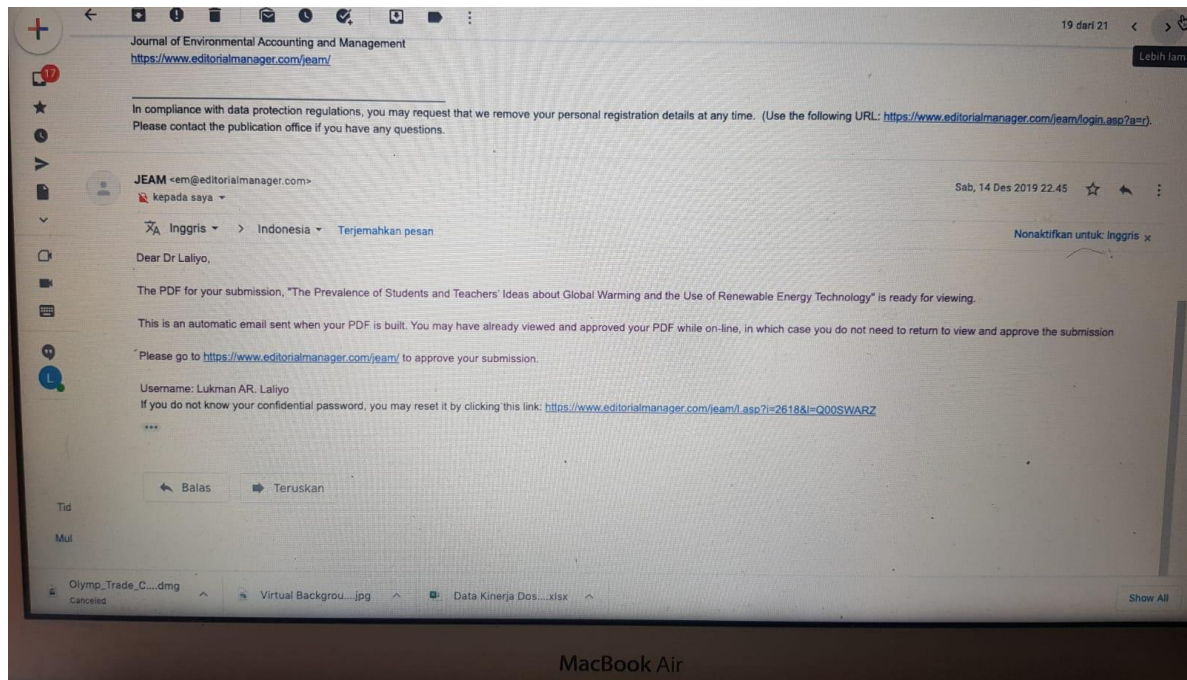
KORESPONDEN EMAIL BY SISTEM EMANAGER WEBSITE

The Prevalence of Students and Teachers' Ideas about Global Warming and the Use of Renewable Energy Technology

Lukman Abdul Rauf Laliyo, Fenty U. Puluhalawa, Sunarty Eraku, Yuszda K. Salimi







JOURNAL OF ENVIRONMENTAL ACCOUNTING AND MANAGEMENT Editorial Manager

HOME • LOGOUT • HELP • REGISTER • UPDATE MY INFORMATION • JOURNAL OVERVIEW
MAIN MENU • CONTACT US • SUBMIT A MANUSCRIPT • INSTRUCTIONS FOR AUTHORS • PRIVACY

Role: Author Username: Lukman AR, Laliyo

Submissions with an Editorial Office Decision for Author Lukman Abdul Rauf Laliyo, Doctoral

Page: 1 of 1 (1 total completed submissions) Display 10 results per page.

Action	Manuscript Number	Title	Initial Date Submitted	Status Date	Current Status	Date Final Disposition Set	Final Disposition
Action Link	JEAM-D-19-00091	The Prevalence of Students and Teachers' Ideas about Global Warming and the Use of Renewable Energy Technology	Dec 14, 2019	Feb 09, 2020	Completed Accept	Feb 09, 2020	Accept

Page: 1 of 1 (1 total completed submissions) Display 10 results per page.

<< Author Main Menu

You should use the free Adobe Reader 10 or later for best PDF Viewing results.

Get ADOBE READER

Your Time: 10:39, 20 October • Site Time: 22:39, 19 October

Olymp_Trade_C...dmg Cancel Virtual Backgrou...jpg Data Kinerja Dos...xlsx Show All

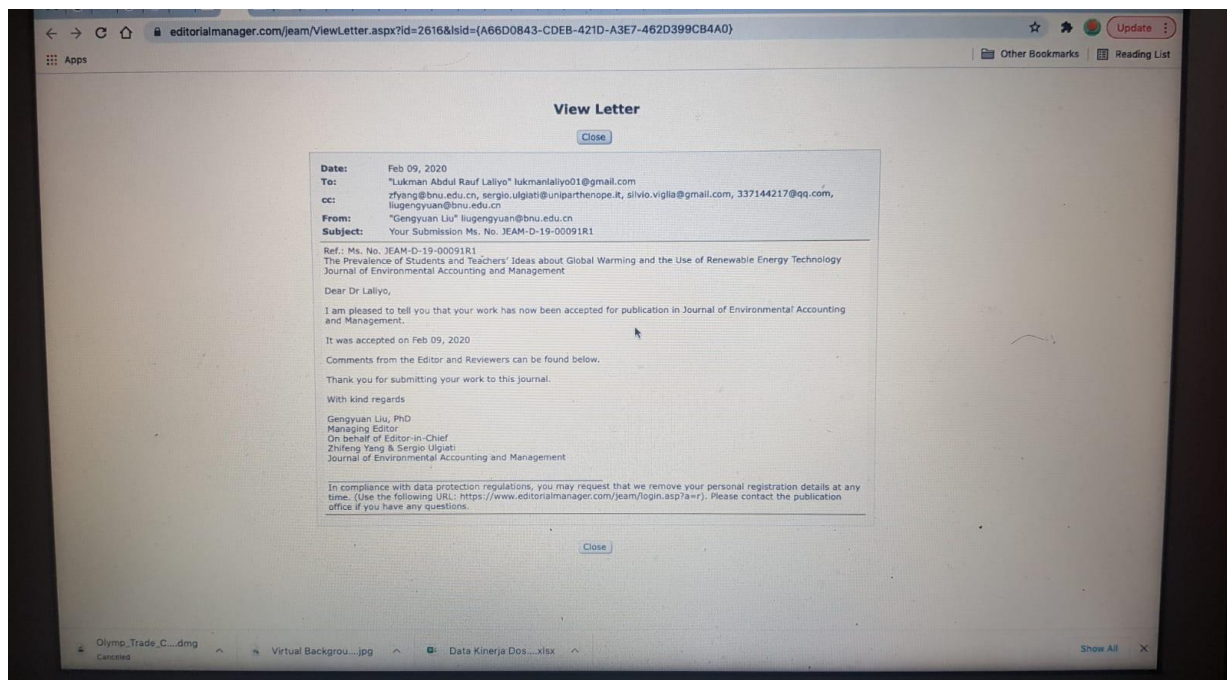
...091_R1

AutoSave OFF

JEAM-D-19-00091_R1 (2) - conv

Home Insert Draw Design Layout References Mailings Review View

Paste Arial 16 A⁺ A⁻ Aa A₁ A₂ A₃ A₄ A₅ A₆ A₇ A₈ A₉ A₁₀ A₁₁ A₁₂ A₁₃ A₁₄ A₁₅ A₁₆ A₁₇ A₁₈ A₁₉ A₂₀ A₂₁ A₂₂ A₂₃ A₂₄ A₂₅ A₂₆ A₂₇ A₂₈ A₂₉ A₃₀ A₃₁ A₃₂ A₃₃ A₃₄ A₃₅ A₃₆ A₃₇ A₃₈ A₃₉ A₄₀ A₄₁ A₄₂ A₄₃ A₄₄ A₄₅ A₄₆ A₄₇ A₄₈ A₄₉ A₅₀ A₅₁ A₅₂ A₅₃ A₅₄ A₅₅ A₅₆ A₅₇ A₅₈ A₅₉ A₆₀ A₆₁ A₆₂ A₆₃ A₆₄ A₆₅ A₆₆ A₆₇ A₆₈ A₆₉ A₇₀ A₇₁ A₇₂ A₇₃ A₇₄ A₇₅ A₇₆ A₇₇ A₇₈ A₇₉ A₈₀ A₈₁ A₈₂ A₈₃ A₈₄ A₈₅ A₈₆ A₈₇ A₈₈ A₈₉ A₉₀ A₉₁ A₉₂ A₉₃ A₉₄ A₉₅ A₉₆ A₉₇ A₉₈ A₉₉ A₁₀₀ A₁₀₁ A₁₀₂ A₁₀₃ A₁₀₄ A₁₀₅ A₁₀₆ A₁₀₇ A₁₀₈ A₁₀₉ A₁₁₀ A₁₁₁ A₁₁₂ A₁₁₃ A₁₁₄ A₁₁₅ A₁₁₆ A₁₁₇ A₁₁₈ A₁₁₉ A₁₂₀ A₁₂₁ A₁₂₂ A₁₂₃ A₁₂₄ A₁₂₅ A₁₂₆ A₁₂₇ A₁₂₈ A₁₂₉ A₁₃₀ A₁₃₁ A₁₃₂ A₁₃₃ A₁₃₄ A₁₃₅ A₁₃₆ A₁₃₇ A₁₃₈ A₁₃₉ A₁₄₀ A₁₄₁ A₁₄₂ A₁₄₃ A₁₄₄ A₁₄₅ A₁₄₆ A₁₄₇ A₁₄₈ A₁₄₉ A₁₅₀ A₁₅₁ A₁₅₂ A₁₅₃ A₁₅₄ A₁₅₅ A₁₅₆ A₁₅₇ A₁₅₈ A₁₅₉ A₁₆₀ A₁₆₁ A₁₆₂ A₁₆₃ A₁₆₄ A₁₆₅ A₁₆₆ A₁₆₇ A₁₆₈ A₁₆₉ A₁₇₀ A₁₇₁ A₁₇₂ A₁₇₃ A₁₇₄ A₁₇₅ A₁₇₆ A₁₇₇ A₁₇₈ A₁₇₉ A₁₈₀ A₁₈₁ A₁₈₂ A₁₈₃ A₁₈₄ A₁₈₅ A₁₈₆ A₁₈₇ A₁₈₈ A₁₈₉ A₁₉₀ A₁₉₁ A₁₉₂ A₁₉₃ A₁₉₄ A₁₉₅ A₁₉₆ A₁₉₇ A₁₉₈ A₁₉₉ A₂₀₀ A₂₀₁ A₂₀₂ A₂₀₃ A₂₀₄ A₂₀₅ A₂₀₆ A₂₀₇ A₂₀₈ A₂₀₉ A₂₁₀ A₂₁₁ A₂₁₂ A₂₁₃ A₂₁₄ A₂₁₅ A₂₁₆ A₂₁₇ A₂₁₈ A₂₁₉ A₂₂₀ A₂₂₁ A₂₂₂ A₂₂₃ A₂₂₄ A₂₂₅ A₂₂₆ A₂₂₇ A₂₂₈ A₂₂₉ A₂₃₀ A₂₃₁ A₂₃₂ A₂₃₃ A₂₃₄ A₂₃₅ A₂₃₆ A₂₃₇ A₂₃₈ A₂₃₉ A₂₄₀ A₂₄₁ A₂₄₂ A₂₄₃ A₂₄₄ A₂₄₅ A₂₄₆ A₂₄₇ A₂₄₈ A₂₄₉ A₂₅₀ A₂₅₁ A₂₅₂ A₂₅₃ A₂₅₄ A₂₅₅ A₂₅₆ A₂₅₇ A₂₅₈ A₂₅₉ A₂₆₀ A₂₆₁ A₂₆₂ A₂₆₃ A₂₆₄ A₂₆₅ A₂₆₆ A₂₆₇ A₂₆₈ A₂₆₉ A₂₇₀ A₂₇₁ A₂₇₂ A₂₇₃ A₂₇₄ A₂₇₅ A₂₇₆ A₂₇₇ A₂₇₈ A₂₇₉ A₂₈₀ A₂₈₁ A₂₈₂ A₂₈₃ A₂₈₄ A₂₈₅ A₂₈₆ A₂₈₇ A₂₈₈ A₂₈₉ A₂₉₀ A₂₉₁ A₂₉₂ A₂₉₃ A₂₉₄ A₂₉₅ A₂₉₆ A₂₉₇ A₂₉₈ A₂₉₉ A₃₀₀ A₃₀₁ A₃₀₂ A₃₀₃ A₃₀₄ A₃₀₅ A₃₀₆ A₃₀₇ A₃₀₈ A₃₀₉ A₃₁₀ A₃₁₁ A₃₁₂ A₃₁₃ A₃₁₄ A₃₁₅ A₃₁₆ A₃₁₇ A₃₁₈ A₃₁₉ A₃₂₀ A₃₂₁ A₃₂₂ A₃₂₃ A₃₂₄ A₃₂₅ A₃₂₆ A₃₂₇ A₃₂₈ A₃₂₉ A₃₃₀ A₃₃₁ A₃₃₂ A₃₃₃ A₃₃₄ A₃₃₅ A₃₃₆ A₃₃₇ A₃₃₈ A₃₃₉ A₃₄₀ A₃₄₁ A₃₄₂ A₃₄₃ A₃₄₄ A₃₄₅ A₃₄₆ A₃₄₇ A₃₄₈ A₃₄₉ A₃₅₀ A₃₅₁ A₃₅₂ A₃₅₃ A₃₅₄ A₃₅₅ A₃₅₆ A₃₅₇ A₃₅₈ A₃₅₉ A₃₆₀ A₃₆₁ A₃₆₂ A₃₆₃ A₃₆₄ A₃₆₅ A₃₆₆ A₃₆₇ A₃₆₈ A₃₆₉ A₃₇₀ A₃₇₁ A₃₇₂ A₃₇₃ A₃₇₄ A₃₇₅ A₃₇₆ A₃₇₇ A₃₇₈ A₃₇₉ A₃₈₀ A₃₈₁ A₃₈₂ A₃₈₃ A₃₈₄ A₃₈₅ A₃₈₆ A₃₈₇ A₃₈₈ A₃₈₉ A₃₉₀ A₃₉₁ A₃₉₂ A₃₉₃ A₃₉₄ A₃₉₅ A₃₉₆ A₃₉₇ A₃₉₈ A₃₉₉ A₄₀₀ A₄₀₁ A₄₀₂ A₄₀₃ A₄₀₄ A₄₀₅ A₄₀₆ A₄₀₇ A₄₀₈ A₄₀₉ A₄₁₀ A₄₁₁ A₄₁₂ A₄₁₃ A₄₁₄ A₄₁₅ A₄₁₆ A₄₁₇ A₄₁₈ A₄₁₉ A₄₂₀ A₄₂₁ A₄₂₂ A₄₂₃ A₄₂₄ A₄₂₅ A₄₂₆ A₄₂₇ A₄₂₈ A₄₂₉ A₄₃₀ A₄₃₁ A₄₃₂ A₄₃₃ A₄₃₄ A₄₃₅ A₄₃₆ A₄₃₇ A₄₃₈ A₄₃₉ A₄₄₀ A₄₄₁ A₄₄₂ A₄₄₃ A₄₄₄ A₄₄₅ A₄₄₆ A₄₄₇ A₄₄₈ A₄₄₉ A₄₅₀ A₄₅₁ A₄₅₂ A₄₅₃ A₄₅₄ A₄₅₅ A₄₅₆ A₄₅₇ A₄₅₈ A₄₅₉ A₄₆₀ A₄₆₁ A₄₆₂ A₄₆₃ A₄₆₄ A₄₆₅ A₄₆₆ A₄₆₇ A₄₆₈ A₄₆₉ A₄₇₀ A₄₇₁ A₄₇₂ A₄₇₃ A₄₇₄ A₄₇₅ A₄₇₆ A₄₇₇ A₄₇₈ A₄₇₉ A₄₈₀ A₄₈₁ A₄₈₂ A₄₈₃ A₄₈₄ A₄₈₅ A₄₈₆ A₄₈₇ A₄₈₈ A₄₈₉ A₄₉₀ A₄₉₁ A₄₉₂ A₄₉₃ A₄₉₄ A₄₉₅ A₄₉₆ A₄₉₇ A₄₉₈ A₄₉₉ A₅₀₀ A₅₀₁ A₅₀₂ A₅₀₃ A₅₀₄ A₅₀₅ A₅₀₆ A₅₀₇ A₅₀₈ A₅₀₉ A₅₁₀ A₅₁₁ A₅₁₂ A₅₁₃ A₅₁₄ A₅₁₅ A₅₁₆ A₅₁₇ A₅₁₈ A₅₁₉ A₅₂₀ A₅₂₁ A₅₂₂ A₅₂₃ A₅₂₄ A₅₂₅ A₅₂₆ A₅₂₇ A₅₂₈ A₅₂₉ A₅₃₀ A₅₃₁ A₅₃₂ A₅₃₃ A₅₃₄ A₅₃₅ A₅₃₆ A₅₃₇ A₅₃₈ A₅₃₉ A₅₄₀ A₅₄₁ A₅₄₂ A₅₄₃ A₅₄₄ A₅₄₅ A₅₄₆ A₅₄₇ A₅₄₈ A₅₄₉ A₅₅₀ A₅₅₁ A₅₅₂ A₅₅₃ A₅₅₄ A₅₅₅ A₅₅₆ A₅₅₇ A₅₅₈ A₅₅₉ A₅₆₀ A₅₆₁ A₅₆₂ A₅₆₃ A₅₆₄ A₅₆₅ A₅₆₆ A₅₆₇ A₅₆₈ A₅₆₉ A₅₇₀ A₅₇₁ A₅₇₂ A₅₇₃ A₅₇₄ A₅₇₅ A₅₇₆ A₅₇₇ A₅₇₈ A₅₇₉ A₅₈₀ A₅₈₁ A₅₈₂ A₅₈₃ A₅₈₄ A₅₈₅ A₅₈₆ A₅₈₇ A₅₈₈ A₅₈₉ A₅₉₀ A₅₉₁ A₅₉₂ A₅₉₃ A₅₉₄ A₅₉₅ A₅₉₆ A₅₉₇ A₅₉₈ A₅₉₉ A₆₀₀ A₆₀₁ A₆₀₂ A₆₀₃ A₆₀₄ A₆₀₅ A₆₀₆ A₆₀₇ A₆₀₈ A₆₀₉ A₆₁₀ A₆₁₁ A₆₁₂ A₆₁₃ A₆₁₄ A₆₁₅ A₆₁₆ A₆₁₇ A₆₁₈ A₆₁₉ A₆₂₀ A₆₂₁ A₆₂₂ A₆₂₃ A₆₂₄ A₆₂₅ A₆₂₆ A₆₂₇ A₆₂₈ A₆₂₉ A₆₃₀ A₆₃₁ A₆₃₂ A₆₃₃ A₆₃₄ A₆₃₅ A₆₃₆ A₆₃₇ A₆₃₈ A₆₃₉ A₆₄₀ A₆₄₁ A₆₄₂ A₆₄₃ A₆₄₄ A₆₄₅ A₆₄₆ A₆₄₇ A₆₄₈ A₆₄₉ A₆₅₀ A₆₅₁ A₆₅₂ A₆₅₃ A₆₅₄ A₆₅₅ A₆₅₆ A₆₅₇ A₆₅₈ A₆₅₉ A₆₆₀ A₆₆₁ A₆₆₂ A₆₆₃ A₆₆₄ A₆₆₅ A₆₆₆ A₆₆₇ A₆₆₈ A₆₆₉ A₆₇₀ A₆₇₁ A₆₇₂ A₆₇₃ A₆₇₄ A₆₇₅ A₆₇₆ A₆₇₇ A₆₇₈ A₆₇₉ A₆₈₀ A₆₈₁ A₆₈₂ A₆₈₃ A₆₈₄ A₆₈₅ A₆₈₆ A₆₈₇ A₆₈₈ A₆₈₉ A₆₉₀ A₆₉₁ A₆₉₂ A₆₉₃ A₆₉₄ A₆₉₅ A₆₉₆ A₆₉₇ A₆₉₈ A₆₉₉ A₇₀₀ A₇₀₁ A₇₀₂ A₇₀₃ A₇₀₄ A₇₀₅ A₇₀₆ A₇₀₇ A₇₀₈ A₇₀₉ A₇₁₀ A₇₁₁ A₇₁₂ A₇₁₃ A₇₁₄ A₇₁₅ A₇₁₆ A₇₁₇ A₇₁₈ A₇₁₉ A₇₂₀ A₇₂₁ A₇₂₂ A₇₂₃ A₇₂₄ A₇₂₅ A₇₂₆ A₇₂₇ A₇₂₈ A₇₂₉ A₇₃₀ A₇₃₁ A₇₃₂ A₇₃₃ A₇₃₄ A₇₃₅ A₇₃₆ A₇₃₇ A₇₃₈ A₇₃₉ A₇₄₀ A₇₄₁ A₇₄₂ A₇₄₃ A₇₄₄ A₇₄₅ A₇₄₆ A₇₄₇ A₇₄₈ A₇₄₉ A₇₅₀ A₇₅₁ A₇₅₂ A₇₅₃ A₇₅₄ A₇₅₅ A₇₅₆ A₇₅₇ A₇₅₈ A₇₅₉ A₇₆₀ A₇₆₁ A₇₆₂ A₇₆₃ A₇₆₄ A₇₆₅ A₇₆₆ A₇₆₇ A₇₆₈ A₇₆₉ A₇₇₀ A₇₇₁ A₇₇₂ A₇₇₃ A₇₇₄ A₇₇₅ A₇₇₆ A₇₇₇ A₇₇₈ A₇₇₉ A₇₈₀ A₇₈₁ A₇₈₂ A₇₈₃ A₇₈₄ A₇₈₅ A₇₈₆ A₇₈₇ A₇₈₈ A₇₈₉ A₇₉₀ A₇₉₁ A₇₉₂ A₇₉₃ A₇₉₄ A₇₉₅ A₇₉₆ A₇₉₇ A₇₉₈ A₇₉₉ A₈₀₀ A₈₀₁ A₈₀₂ A₈₀₃ A₈₀₄ A₈₀₅ A₈₀₆ A₈₀₇ A₈₀₈ A₈₀₉ A₈₁₀ A₈₁₁ A₈₁₂ A₈₁₃ A₈₁₄ A₈₁₅ A₈₁₆ A₈₁₇ A₈₁₈ A₈₁₉ A₈₂₀ A₈₂₁ A₈₂₂ A₈₂₃ A₈₂₄ A₈₂₅ A₈₂₆ A₈₂₇ A₈₂₈ A₈₂₉ A₈₃₀ A₈₃₁ A₈₃₂ A₈₃₃ A₈₃₄ A₈₃₅ A₈₃₆ A₈₃₇ A₈₃₈ A₈₃₉ A₈₄₀ A₈₄₁ A₈₄₂ A₈₄₃ A₈₄₄ A₈₄₅ A₈₄₆ A₈₄₇ A₈₄₈ A₈₄₉ A₈₅₀ A₈₅₁ A₈₅₂ A₈₅₃ A₈₅₄ A₈₅₅ A₈₅₆ A₈₅₇ A₈₅₈ A₈₅₉ A₈₆₀ A₈₆₁ A₈₆₂ A₈₆₃ A₈₆₄ A₈₆₅ A₈₆₆ A₈₆₇ A₈₆₈ A₈₆₉ A₈₇₀ A₈₇₁ A₈₇₂ A₈₇₃ A₈₇₄ A₈₇₅ A₈₇₆ A₈₇₇ A₈₇₈ A₈₇₉ A₈₈₀ A₈₈₁ A₈₈₂ A₈₈₃ A₈₈₄ A₈₈₅ A₈₈₆ A₈₈₇ A₈₈₈ A₈₈₉ A₈₉₀ A₈₉₁ A₈₉₂ A₈₉₃ A₈₉₄ A₈₉₅ A₈₉₆ A₈₉₇ A₈₉₈ A₈₉₉ A₉₀₀ A₉₀₁ A₉₀₂ A₉₀₃ A₉₀₄ A₉₀₅ A₉₀₆ A₉₀₇ A₉₀₈ A₉₀₉ A₉₁₀ A₉₁₁ A₉₁₂ A₉₁₃ A₉₁₄ A₉₁₅ A₉₁₆ A₉₁₇ A₉₁₈ A₉₁₉ A₉₂₀ A₉₂₁ A₉₂₂ A₉₂₃ A₉₂₄ A₉₂₅ A₉₂₆ A₉₂₇ A₉₂₈ A₉₂₉ A₉₃₀ A₉₃₁ A₉₃₂ A₉₃₃ A₉₃₄ A₉₃₅ A₉₃₆ A₉₃₇ A₉₃₈ A₉₃₉ A₉₄₀ A₉₄₁ A₉₄₂ A₉₄₃ A₉₄₄ A₉₄₅ A₉₄₆ A₉₄₇ A₉₄₈ A₉₄₉ A₉₅₀ A₉₅₁ A₉₅₂ A₉₅₃ A₉₅₄ A₉₅₅ A₉₅₆ A₉₅₇ A₉₅₈ A₉₅₉ A₉₆₀ A₉₆₁ A₉₆₂ A₉₆₃ A₉₆₄ A₉₆₅ A₉₆₆ A₉₆₇ A₉₆₈ A₉₆₉ A₉₇₀ A₉₇₁ A₉₇₂ A₉₇₃ A₉₇₄ A₉₇₅ A₉₇₆ A₉₇₇ A₉₇₈ A₉₇₉ A₉₈₀ A₉₈₁ A₉₈₂ A₉₈₃ A₉₈₄ A₉₈₅ A₉₈₆ A₉₈₇ A₉₈₈ A₉₈₉ A₉₉₀ A₉₉₁ A₉₉₂ A₉₉₃ A₉₉₄ A₉₉₅ A₉₉₆ A₉₉₇ A₉₉₈ A₉₉₉ A₁₀₀₀ A₁₀₀₁ A₁₀₀₂ A₁₀₀₃ A₁₀₀₄ A₁₀₀₅ A₁₀₀₆ A₁₀₀₇ A₁₀₀₈ A₁₀₀₉ A₁₀₁₀ A₁₀₁₁ A₁₀₁₂ A₁₀₁₃ A₁₀₁₄ A₁₀₁₅ A₁₀₁₆ A₁₀₁₇ A₁₀₁₈ A₁₀₁₉ A₁₀₂₀ A₁₀₂₁ A₁₀₂₂ A₁₀₂₃ A₁₀₂₄ A₁₀₂₅ A₁₀₂₆ A₁₀₂₇ A₁₀₂₈ A₁₀₂₉ A₁₀₃₀ A₁₀₃₁ A₁₀₃₂ A₁₀₃₃ A₁₀₃₄ A₁₀₃₅ A₁₀₃₆ A₁₀₃₇ A₁₀₃₈ A₁₀₃₉ A₁₀₄₀ A₁₀₄₁ A₁₀₄₂ A₁₀₄₃ A₁₀₄₄ A₁₀₄₅ A₁₀₄₆ A₁₀₄₇ A₁₀₄₈ A₁₀₄₉ A₁₀₅₀ A₁₀₅₁ A₁₀₅₂ A₁₀₅₃ A₁₀₅₄ A₁₀₅₅ A₁₀₅₆ A₁₀₅₇ A₁₀₅₈ A₁₀₅₉ A₁₀₆₀ A₁₀₆₁ A₁₀₆₂ A₁₀₆₃ A₁₀₆₄ A₁₀₆₅ A₁₀₆₆ A₁₀₆₇ A₁₀₆₈ A₁₀₆₉ A₁₀₇₀ A₁₀₇₁ A₁₀₇₂ A₁₀₇₃ A₁₀₇₄ A₁₀₇₅ A₁₀₇₆ A₁₀₇₇ A₁₀₇₈ A₁₀₇₉ A₁₀₈₀ A₁₀₈₁ A₁₀₈₂ A₁₀₈₃ A₁₀₈₄ A₁₀₈₅ A₁₀₈₆ A₁₀₈₇ A₁₀₈₈ A₁₀₈₉ A₁₀₉₀ A₁₀₉₁ A₁₀₉₂ A₁₀₉₃ A₁₀₉₄ A₁₀₉₅ A₁₀₉₆ A₁₀₉₇ A₁₀₉₈ A₁₀₉₉ A₁₁₀₀ A₁₁₀₁ A₁₁₀₂ A₁₁₀₃ A₁₁₀₄ A₁₁₀₅ A₁₁₀₆ A₁₁₀₇ A₁₁₀₈ A₁₁₀₉ A₁₁₁₀ A₁₁₁₁ A₁₁₁₂ A₁₁₁₃ A₁₁₁₄ A₁₁₁₅ A₁₁₁₆ A₁₁₁₇ A₁₁₁₈ A₁₁₁₉ A₁₁₂₀ A₁₁₂₁ A₁₁₂₂ A₁₁₂₃ A₁₁₂₄ A₁₁₂₅ A₁₁₂₆ A₁₁₂₇ A₁₁₂₈ A₁₁₂₉ A₁₁₃₀ A₁₁₃₁ A₁₁₃₂ A₁₁₃₃ A₁₁₃₄ A₁₁₃₅ A₁₁₃₆ A₁₁₃₇ A₁₁₃₈ A₁₁₃₉ A₁₁₄₀ A₁₁₄₁ A₁₁₄₂ A₁₁₄₃ A₁₁₄₄ A₁₁₄₅ A₁₁₄₆ A₁₁₄₇ A₁₁₄₈ A₁₁₄₉ A₁₁₅₀ A₁₁₅₁ A₁₁₅₂ A₁₁₅₃ A₁₁₅₄ A₁₁₅₅ A₁₁₅₆ A₁₁₅₇ A₁₁₅₈ A₁₁₅₉ A₁₁₆₀ A₁₁₆₁ A₁₁₆₂ A₁₁₆₃ A₁₁₆₄ A₁₁₆₅ A₁₁₆₆ A₁₁₆₇ A₁₁₆₈ A₁₁₆



The Prevalence of Students and Teachers' Ideas about Global Warming and the Use of Renewable Energy Technology

Lukman Abdul Rauf Laliyo,^{a,*} Fenty U. Puluhulawa,^b Sunarty Eraku,^c Yuszda K. Salimi,^a

^aDepartment of Chemistry, Universitas Negeri Gorontalo, Indonesia

^bDepartment of Law, Universitas Negeri Gorontalo, Indonesia

^cDepartment of Geography, Universitas Negeri Gorontalo, Indonesia

*Corresponding author: Phone: +628114308449, E-mail: lukman.laliyo@ung.ac.id

ABSTRACT

This study aims to explore the prevalence of students' and teachers' ideas about global warming and the use of renewable energy technology in Gorontalo, Indonesia. Employing a non-experimental quantitative approach, the data were collected from 1522 respondents and analyzed with the WINSTEPS 3.73 Rasch software. This study reports that 97.6% and 76.08% of the respondents respectively understand the concepts of global warming and renewable energy from the internet (45%) and formal education (<40%). Respondents' level/status of education, gender, and hometown cause some differences in their ideas prevalence. High school students consider that utilizing renewable energy is not crucial; they also do not concern about global warming effects and the environment. Teachers and university students do not believe that using renewable energy can produce sustainable energy; they also question the safety of renewable energy technology. These findings indicate the needs for a renewable energy literacy program in formal education in Indonesia.

Keywords: prevalence, global warming, renewable energy

INTRODUCTION

The increase in global warming, largely due to the greenhouse effect, has begun to be considered as a real phenomenon over the past two decades (Kiliç, Stanisstreet, & Boyes, 2009). In line with this issue, people are also more aware of the effects of global warming on the global, social, and economic environment (Güven & Sulun, 2017). The latest information reported by the most authoritative source explains that some negative consequences of global warming have occurred; although the increase in greenhouse gas emissions in the atmosphere can be stabilized, these consequences are still difficult to avoid until today. A special report states that the effects of global warming have led to an increase in the earth's surface temperature by around 1.5°C (The Intergovernmental Panel on Climate Change, 2018). Accordingly, several political leaders in the developed countries, although they have different perspectives on certain cases, have admitted the truth and the urgent needs to reduce greenhouse gas emissions on a world scale (Güney, 2019; Kiliç et al., 2009; Ntona, Arabatzis, & Kyriakopoulos, 2015).

Most developed countries prefer to use energy from fossil fuel, such as petroleum and coal. In addition to the low price, the technology utilized to produce such energy has significantly improved in the last two centuries (Güven & Sulun, 2017). Nevertheless, the utilization of this fossil fuel has contributed to the increase in greenhouse gas concentrations,

e.g., CO₂, CH₄, CFCs, halon, N₂O, ozone, peroxyacetyl nitrate in the atmosphere which tends to be more alarming. Consequently, the earth's surface temperature has increased and caused negative effects on human health and environment, particularly air pollution, acid rain, global warming, and climate change (Panwar, Kaushik, & Kothari, 2011).

One of the largest contributions to the increasing CO₂ in the atmosphere is human activities, e.g., using conventional fuel for vehicle and electrical energy generation. Various studies reveal that CO₂ in the atmosphere has gone up to approximately 31 percent in 200 years; meanwhile, global gas emissions have increased by around 37 percent. Moreover, the world temperature has increased by averagely 0.7°C (Panwar et al., 2011; Worrell, Bernstein, Roy, Price, & Harnisch, 2009).

The issues arisen from the effects of global warming along with the world oil crisis in 1973 have motivated the developed countries to resolve it by developing two main strategies, including 1). Reducing greenhouse gas emissions produced by the utilization of fossil energy; 2). Developing technology to produce energy from non-carbon alternative sources (Acikgoz, 2011). This attempt is intended to produce energy from renewable and sustainable sources as well as being able to minimize waste, to decrease air pollution and greenhouse gas emissions, and protect forest and nature (Acikgoz, 2011).

The production of renewable energy, that can be sourced from the sun, wind, geothermal and hydraulic energy as clean energy sources, does not produce toxic greenhouse gas and not pollute the environment; it will always be used and renew itself naturally (Guardiola, Gabay, & Moskowitz, 2009). The developed countries have carried out the implementation of both strategies to decrease the effects of global warming. However, the developing countries, Indonesia, for instance, tend to face a big challenge, emerging from the investment, technology readiness, and community support in particular. This present study focuses on exploring the community support and participation, especially in terms of technology utilization driven by renewable energy sources.

As reported in some print media, Indonesia is the fourth largest population in the world, with an estimated population of 252 million; they are assumed to use fossil energy at 893 Mboe (barrel of oil equivalent) (Nugroho, Fei-Lu, & Firmansyah, 2017). In the Southeast Asia region, on the other hand, Indonesia is one of the countries with the largest energy consumers (Tondang, 2019a) and is trying to optimize the use of abundantly-available renewable energy resources (Adzikri, Notosudjono, & Suhendi, 2014). According to the World Bank 2019, the level of power use in Indonesia is around 812 kWh per capita (Tondang, 2019a). This number is higher than India and is predicted to continue to increase every year.

Indonesia geographically has the potentials for developing renewable energy. It is able to generate 716 GW of energy from solar photovoltaic (solar PV), hydropower, bioenergy, geothermal, ocean wave power, and wind (Tondang, 2019b). Nonetheless, Indonesia still needs to encounter a big challenge, specifically the limited open field for energy utilization from solar PV, high investment cost for new and renewable technology use, and little support and participation from the community. Community support and participation play an important role in the transition of the use of renewable energy technology. Regarding this, a study in Europe figures out that society provides good support for the further implementation of developing renewable energy technology (Kiliç et al., 2009; Wolsink, 2007). Indonesia, in contrast, finds it challenging to obtain scientific information related to community acceptance and support about the utilization of renewable energy. For this reason, a study on the extent to which students and teachers contribute to reducing global warming and their behavior towards the use of renewable energy should have been conducted (Daniel, Stanisstreet, & Boyes, 2004).

Several previous studies focus on the level of community acceptance and support towards the renewable energy utilization, e.g., people's needs for "green energy" and energy efficiency (Zarnikau, 2003), perception and behavior on the development of renewable energy

Commented [A1]: Looking the guideline in the website how to cited

Commented [A2]: The reason make clear and the connected with research direction

(Johansson & Laike, 2007), environmental concern and consumers' trust on renewable energy (Bang & Ellinger, 2000), energy conservation and awareness of renewable energy (Assali, Khatib, & Najjar, 2019), renewable energy and its sustainable development (Güney, 2019). Besides, a study related to students' and teachers' knowledge include the prospective teachers' knowledge and awareness of renewable energy (Guven & Sulun, 2017), students' trust on the benefits of nuclear and renewable energy (Skamp et al., 2019), students' ideas and viewpoint on renewable energy (Kılınç, Stanisstreet, & Boyes, 2008; Komendantova, Yazdanpanah, & Shafiei, 2018), students' knowledge, perception, and behavior towards renewable energy (Ntona et al., 2015; Zyadin, Puhakka, Ahponen, Cronberg, & Pelkonen, 2012), renewable energy education (Acikgoz, 2011). Furthermore, by adopting the method from the conducted study, the purpose of this present study is to explore the prevalence of ideas of students and teachers in Indonesia, as the consumer generation, educator, and decision-maker in the future towards the use of renewable energy.

Prevalence refers to the general viewpoint (Badan Pembinaan dan Pengembangan Bahasa, 2016). The prevalence of the idea of utilizing renewable energy can be defined as a general idea that is commonly understood, related to the use of renewable energy. Ideas are constructively formed by individuals who always learn. Their learning process of experience will determine the quality of the idea construction (Rahayu, 2017). If the idea construction of renewable energy use is obtained directly from the formal learning experience, students' and teachers' ideas will be more meaningful. It implies that they can understand well the characteristics of the utilization of renewable energy and to show holistic and interrelated viewpoint between technology and the use of renewable energy as well as the reduction of the bad effects of global warming on the environment. By exploring this idea, the readiness of students and teachers can be evaluated as an effort to explain the extent to which the level of acceptance and sustainability of the adoption of renewable energy technology will be achieved in the future. If the ideas tendency contradicts each other, it will raise a presumption that students and teachers understand the concept of renewable energy utilization and global warming in a partial way, not in a holistic way. This can also elaborate on the reason for students' and teachers' low concern on the environment.

This study is a significant part to "read" (learn about) the prevalence of ideas of renewable energy use among students and teachers as formal educators. The urgency is based on the needs to evaluate the readiness level of knowledge and comprehension of renewable energy and its utilization as a consumer, educator, and energy decision-maker in the future. The significance is that since formal education is a strategic medium to grow concern about and adoption of renewable energy technology, then the prevalence of ideas among students and teachers should have represented a positive tendency for the use of renewable energy.

The failure of applying renewable energy in any country is due to the low awareness of the community, unsuccessful policy, and market characteristics (Assali et al., 2019). The lack of community acceptance and willingness to utilize renewable energy can serve as the main barrier for renewable energy diffusion (Komendantova et al., 2018). Hence, it is crucial for the community in general, students and teachers in particular, to expand their basic understanding of the concept of energy and the ability to make a decision based on the information about the issues of renewable energy utilization (Sutter, Dauer, Kreuziger, Schubert, & Forbes, 2019). This is what the world of education and learning in schools are responsible for. Education plays a vital role in raising awareness of environment, skill, and behavior (The United Nations Conference on Environment and Development, 1992); University, in particular, contributes significantly to educating "future leaders" (Martin & Jucker, 2005).

A topic about energy has been learned in primary and high schools, even been introduced since children reach the age of 5 (Kandpal & Broman, 2014). A small part of this present study studies the insight of the high schools' students; it reveals that they generally

Commented [A3]: Proofreading make a good English

have limited knowledge of the main concept of energy (Bodzin, 2012; DeWaters & Powers, 2011; Rose & Barton, 2012). More than half of the students can define renewable energy accurately, and only 36.1% of the total students at grade VIII who can correctly identify natural gas as the renewable energy source. Moreover, less than half of the students can identify coal as abundant fossil fuel in the United States (Bodzin, 2012; DeWaters & Powers, 2011). A study reported by Rose and Barton (2012) concludes that high school students tend to present a complex thought and consider various perspectives if they are asked to state their decision about the use of power generation technology. They ultimately choose to agree with the social benefits of utilizing energy with a lower cost, compared to the effects of reducing carbon emissions drastically. In the context of education in Indonesia, it encounters a different reality; this encourages the idea of conducting this study in order to answer two questions, including a) how is the prevalence of students' and teachers' ideas about the use of renewable energy?; b) are there any significant differences in the prevalence of students' and teachers' ideas about the utilization of renewable energy based on their demographic differences (level of education, gender, and hometown)?.

Commented [A4]: Correction the cited

METHOD OF STUDY

Respondents

Employing a quantitative survey approach, this study used the prevalence of students' and teachers' ideas about the use of renewable energy as the variable measured by a questionnaire. It was conducted in March 2019 and applied the convenience sampling in selecting the sample; the respondents were directly given a questionnaire. Concerning ethical considerations, respondents' consent to participate in this present study was firstly asked before filling out the questionnaire. Participation was very voluntary and used anonymity. Respondents' demographic profile is presented in Table 1.

Table 1. Demographic Profile of Respondents (N=1522)

Demographics	Respondents	Percentage (%)
Gender		
Male	523	34.36
Female	999	65.64
Level of Education		
Junior High School Students	304	19.97
Senior High School Students	527	34.63
University Students	547	35.94
Teachers	147	9.66
Hometown		
Gorontalo	1011	66.43
Gorontalo Regency	214	14.06
Bone Bolango Regency	145	9.53
Boalemo Regency	57	3.75
North Gorontalo Regency	36	2.37
Pohuwato Regency	59	3.88

Instrument

A questionnaire with closed-ended questions was developed to measure the prevalence of respondents' (students and teachers) ideas about the utilization of renewable energy. In this present study, the prevalence of ideas was measured based on the aspects of knowledge, viewpoint, and behavior of the respondents about the concepts of global warming, the types of renewable energy resources, the characteristics of renewable energy, the advantages and disadvantages of using the technology of renewable energy. The majority of the questionnaire

contents (see Appendix A) was adapted from the instrument used by Kiliç et al. (2009); Yang, Tsou, Chen, Chan, and Chang (2011).

In the first section, the respondents were asked to fill out demographic questions, i.e., name, status/level of education, and hometown. Further, they were requested to answer four groups of items, including 1) a group of item functioned to identify the respondents' knowledge of the concepts of global warming, renewable energy, the types of renewable energy resources, renewable energy products, and the sources of the respondents recognize the term global warming and renewable energy at the first time; this group was started from item 1 to item 7; 2) a group of item intended to measure the respondents' knowledge of the characteristics of renewable energy as well as the advantages and disadvantages of using power generation technology from renewable energy sources; this group was started from item 8 to item 21. Respondents' responses had been provided, and they needed to select one of five options; strongly disagree (SD), disagree (D), neutral (N), agree (A), or strongly agree (SA); 3) a group of item used to measure students' viewpoint related to the importance of utilizing renewable energy technology. Viewpoint, in this context, reflects respondents' opinion (behavior) regarding renewable energy; this group was started from item 22 to item 29. Respondents chose one of four options provided; very unimportant (VU), unimportant (U), important (I), very important (VI).

Unlike the previous three groups of items, the fourth group of item measured the level of respondents' awareness of global warming effects on the environment; this group was started from item 30 to 33. The characteristics of each item were different from one another, initiated by the question of the extent to which they concerned about the effects of global warming on the environment. Four options provided to the respondents included really unconcerned (RU), a bit concerned (BC), concerned (C), and really concerned (RC). In addition, respondents' responses to how well they know about the effects of global warming were asked. Respondents selected one of four options of very unknowledgeable (VU), a bit knowledgeable (BK), knowledgeable (K), very knowledgeable (VK). The next question was about whether or not they always protect the environment, in which the provided responses consisted of not at all (NAA), once in a while (OW), sometimes (S), always (A). Lastly, the respondents were asked about their opinion about whether or not global warming recently occurs; the provided responses were I believe that global warming does not occur (IBGWDNO), I think that global warming does not occur (ITGWDNO), I do not know that global warming occurs (IDNKGWO), I think that global warming occurs (ITGWO), I believe that global warming occurs (IBGWO).

Prior to filling out the questionnaire, the respondents were explained the purpose of the procedure in filling out the questionnaire. They were also informed that the questionnaire was not a test nor collecting personal information; rather, it was intended to advance science and technology through this present study. The respondents should finish the questionnaire independently. Before being used for data collection, a small-scale trial was applied to 25 respondents in order to ensure the suitability of words, formats, and layouts. These respondents no longer involved in the data collection process.

After the actual data were collected, respondents' responses were divided into two data groups. The first group (responses for item 1-7) was analyzed employing the descriptive percentage method; the second group (responses for item 8-33) was tabulated into the Microsoft Excel format, and was analyzed using the WINSTEPS 3.73 version software as the Rasch measurement model. The validity and reliability of the instrument were obtained through the calibration of the levels of item difficulty and respondents' ability. WINSTEPS software mathematically transformed raw ordinal data (Likert-typed data), based on the response frequency that came up as a probability, to logit (log-odds) through logarithmic functions that

Commented [A5]: The instrument only 1??? Writing !!!

Commented [A6]:

assessed the suitability of the whole instrument and the respondents (Linacre, 2012; Bond & Fox, 2015).

The reliability value of the internal instrument is shown in Table 2 that was processed based on the data (see Appendix B). This value referred to the result of “summary of fit statistics” or reliability index in the form of logit measure, as the determinant of questionnaire quality and instrument psychometrics.

Commented [A7]: Correct the cited and looking the Guidelines

Table 2. Reliability of Person and Item

	Person (N=1522)	Item (N=26)
Mean	0.66	0.00
Deviation Standard	0.54	0.67
Separation index	1.70	19.75
Reliability index	0.74	1.00
Cronbach Alpha (KR-20)	0.77	-

Unidimensionality and Rating Scale Analysis

This questionnaire had a good unidimensionality measure (see Appendix C), in which the measurement result of raw variance data was 33.3%. It signifies that the unidimensionality requirement of minimally 20% was fulfilled (Fisher Jr., 2007), or in other words, the instrument was able to effectively measure the prevalence of respondents’ ideas about the use of renewable energy. Based on the rating scale analysis (see Appendix D), the respondents easily comprehended five types of rating scales (from item 8 to item 21, and item 33) and four types of rating scales (from item 22 to item 32) with the threshold rating scale of 1.4-5.0 (Fisher Jr., 2007).

Person Reliability and Item Reliability

Table 2 indicates that the Person Reliability Index (0.74) empirically showed pretty good consistency in respondents’ responses (Sumintono & Widhiarso, 2014), implying that the scale was able to discriminate respondents’ responses very well. It also applied to the Item Reliability Measure (1.00) that was categorized “very good” (Sumintono & Widhiarso, 2015), meaning that the respondents’ had a very high probability in responding to the questionnaire items. The estimation of the high value of the item reliability signified that the item greatly defined the latent variables (Bond & Fox, 2015). According to this measurement result of the Person and Item Reliability, the questionnaire was reliable to be used in various groups of respondents.

Cronbach Alpha

The coefficient value of *Cronbach Alpha* KR-20 (0.77) described a good interaction among 1522 respondents with 26 items (Sumintono & Widhiarso, 2015). It implied that the instrument was reliable for having excellent consistency in internal psychometrics.

Person and Item Separation Index

Respondents separation index (Person Separation Index) is an estimated value functioned to discriminate respondents’ ability, or in this case, is the latent characteristics (of the measured item). The higher the Person Separation Index, the higher the respondents’ probability in responding to those items accurately. Person Separation Index also indicated the item’s distribution, from the easiest to the most difficult items (Boone, Yale, & Staver, 2014); the broader the distribution, the better the items. Based on Table 2, the Person Separation Index (1.70) and Item Separation Index (19.75) showed fairly good distribution of questionnaire items to various respondents and items. The results of this criteria measurement asserted that

the used questionnaire was reliable and suitable to measure the prevalence of respondents' ideas in understanding the utilization of renewable energy.

Data Analysis

Respondents' data analysis in the first group of item (item 1-7) employed descriptive statistics and average value. On the contrary, respondents' data analysis in the second, third, and fourth groups (item 8-33) used the WINSTEP 3.73 version software as the Rasch measurement model. The average value in the Rasch measurement model was in the form of a logit scale that had been converted from the score of the Likert scale. The higher the logit value of the item, the higher the difficulty of the item; meaning that the item would be complicated for the respondents to work on. The Differential Item Functioning was intended to identify respondents' responses based on their demographic profile (gender, level of education, and hometown). This analysis would inform the acceptable items according to respondents' demographic characteristics. Thus, this analysis was the most suitable method to explain empirical facts as in line with the purpose of this study.

RESULTS

Knowledge of global warming and renewable energy

Figure 1 displays the graphics of respondents' responses over the questions “do you know the term global warming?” (item 1), “where did the first time you know about global warming?” (item 2), “do you know the term renewable energy?” (item 3), “where did the first time you know about renewable energy?” (item 4).

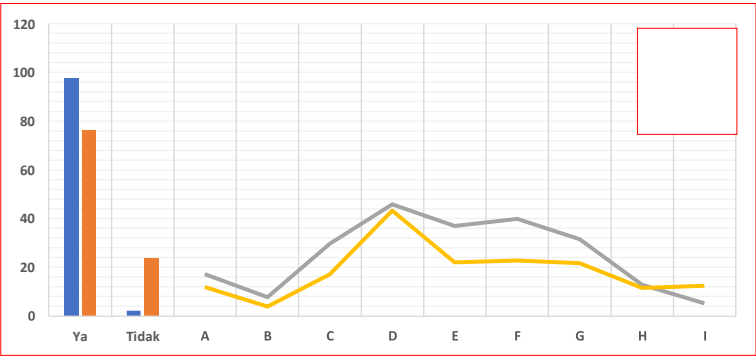


Figure 1 Respondents' knowledge of global warming and renewable energy. *Ya*= Yes, *Tidak*= No, A= Friend, B= Family, C= Print Media, D= Internet, E= Elementary School, F= Junior High School, G= Senior High School, H= University, I= Others.

Almost all respondents (97.6%) recognize the term global warming and only three-quarters of the total respondents (76.08%) who know the term renewable energy. They get those terms mostly from the internet (45%); less than 40% of the respondents know both terms from formal education, i.e., Junior High School, Senior High School, and University. Additionally, Figure 2 presents the graphics of respondents' responses over the definition of renewable energy (item 5), renewable energy sources (item 6), and renewable energy technology (item 7).

More than three-quarters of the respondents (81.08%) opine that renewable energy is energy that can be regenerated or renewable as its term; a small number of respondents (13.86%) cannot define renewable energy. The most widely known sources of renewable energy are sun (58.34%), wind (54.27%), river (36.79%), waves (25.43%), natural gas (22.60%), underground water (22.27%), biological waste (13.80%), ocean and sea (13.47%), Hydrogen (10.54%), and radioactive (4.86%). Nevertheless, some respondents still choose petroleum (24.44%), coal (20.83%), and fuel (12.09%) as renewable energy sources, implying that they do not understand the concept of renewable energy. Regarding the types of power generation from renewable energy sources, more than ten respondents mention sun (54.01%), water (48.23%), wind (44.09%), waves (27.79%), geothermal energy (23.06%), natural gas (22.60%), nuclear (15.18%), biomass (13.99%), and Hydrogen (7.10%).

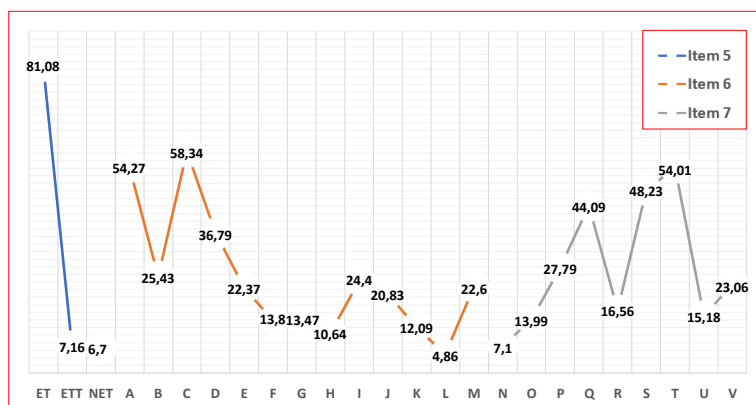


Figure 2 Respondents' responses over the definition of renewable energy (item 5), renewable energy sources (item 6), and renewable energy technology (item 7).

ET= renewable energy, ETT= non-renewable energy, NET= Others, A= wind, B= waves, C= sun, D= river, E= underground water, F= biological waste, G= ocean and sea, H= hydrogen, I= petroleum, J= coal, K= fuel, L= radioactive, M= natural gas; N= energy sources power generation (PLSE), Hydrogen, O= PLSE biomass, P= PLSE waves, Q= PLSE wind, R= PLSE thermal, S= PLSE water, T= PLSE sun, U= PLSE nuclear, and V= PLSE geothermal.

Students' and teachers' ideas about the characteristics of renewable energy

The second section of the questionnaire explored respondents' ideas about the characteristics of using the technology of renewable energy. The analysis encompassed two things; 1) item analysis used to identify respondents' ideas about the advantages of utilizing the technology of renewable energy (item 8, 9, 12, 14, 17, and 21); 2) item analysis functioned to identify respondents' knowledge of the disadvantages of using the technology of renewable energy (item 10, 11, 13, 15, 16, 18, 19, and 20). Their responses in the form of ordinal data were converted to interval data by applying the Rasch model. The results are shown in Figure 3 in the form of Wright Map (Person-Map-Item). This map presents distribution layouts of the

respondents' consent level (on the left side) and the difficulty level of the item consent (on the right side). The distribution of the respondents who easily agree and the item that is easily agreed is at the bottom of the map; the opposite is at the top of the map. The higher the logit value of the item is, the harder for the item to be agreed by the respondents will be, and the other way around.

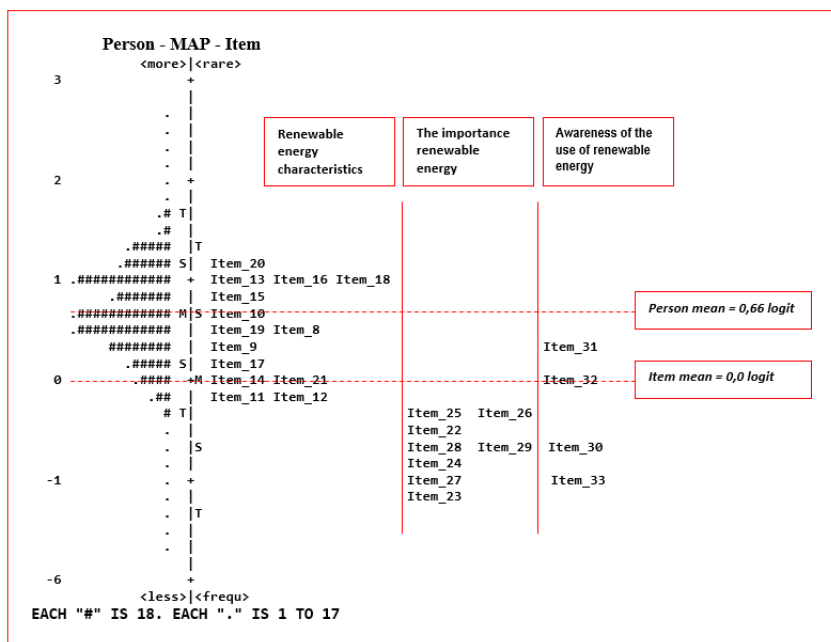


Figure 3. Wright Map, Person-Map-Item

Figure 3 reveals respondents' ideas about the advantages of using the technology of renewable energy, sorted by the increase in item logit measure; item 12 < item 21 < item 14 < item 17 < item 9 < item 8. This finding indicates that the respondents tend to more agree with the utilization of renewable energy technology that is safer (item 12), able to reduce the bad effects of global warming (item 21), able to suffice power consumption for all people (item 14), and able to provide energy all the time (item 17), and the respondents will be willing to pay extra fee if the power consumption in their house is generated from the shared technology of renewable energy generation (item 9 and 8). In this context, the respondents understand that using the technology of renewable energy is way safer than other technologies; however, they cannot go with the extra fee if the renewable energy generation is utilized.

From the perspective of respondents' ideas about the disadvantages of the renewable energy utilization, it is found that item 11 < item 19 < item 10 < item 15 < item 13 < item 18 < item 16 < item 20. The respondents find it easier to agree with item 11 (*creating power generation technology from renewable energy sources tends to be cheaper*), item 19 (*I do not know whether or not renewable energy generation will cause environmental issues in the future*) than item 10 (*I will not stay near the renewable energy generation*), item 15 (*the*

shutdown of renewable energy generation that had been used is costly), item 13 (*renewable energy generation endangers the surrounding animals*), item 16 (*renewable energy generation endangers surrounding people*), and item 20 (*using renewable energy generation is an illogical idea*).

This finding signifies that the respondents do not understand the concept of using renewable energy technology, whether or not it can lead to environmental issues in the future. They do not realize that living in a house near the renewable energy generation is trouble-free, and the generation can be shutdown with a low price after used. Interestingly, the respondents find it difficult to go with the idea that utilizing renewable energy is illogical and can damage the environment; meanwhile, other respondents more agree with the idea that they commonly have not heard of the use of renewable energy for the environment; they also assume that creating power generation technology from renewable energy sources is way more inexpensive. This brings up the fact that the prevalence of respondents' ideas is contradictory and tends to be partially comprehended.

Students' and teachers' viewpoint on the importance of using renewable energy technology

The third section of the questionnaire explored the respondents' viewpoint on the importance of the use of renewable energy from item 22 to item 29. The term "viewpoint" is defined as a "way of thinking" of the respondents based on information, perception, and observation regarding the utilization of renewable energy. Respondents who have a good structure of information will possibly present a contextual and logical way of thinking and viewpoint.

According to the Wright Map, Person-Map-Item (Figure 3), it shows that the item logit measure is $23 < 27 < 24 < 28 < 29 < 22 < 26 < 25$; it signifies the respondents' way of thinking (from left to right), stating that item 23 is way more important than item 27, 24, 28, 29, 22, 26, and 25. This finding indicates that 1) the respondents think that it is essential to use power generated from a safer technology of renewable energy generation (item 23), this technology does not endanger the surrounding people (item 27), and power consumption is available all the time (item 24); 2) respondents consider that the use of renewable energy technology is able to decrease the bad effects of global warming (item 28); 3) respondents believe that it is necessary to respect friends who concern about the environment (item 29), it is crucial to utilize a low-priced technology of renewable energy (item 22), and renewable energy technology is not dangerous to surrounding animals (item 26) and plants (item 25).

Students' and teachers' level of awareness of the use of renewable energy technology

The fourth section of the questionnaire explored the level of awareness of the respondents through item 30, 31, 32, and 33. According to the Wright Map, Person-Map-Item (Figure 3), it reveals that the item logit measure is $31 > 32 > 30 > 33$. This finding signifies that 1) respondents do not have adequate knowledge of global warming (item 31); 2) respondents rarely do the activities to protect the environment (item 32); 3) respondents do not concern about the effects of global warming on the environment (item 30); 4) respondents strongly believe that global warming is occurring now. It implies that the respondents have a low level of awareness related to the use of renewable energy technology. On the one hand, they strongly believe that global warming is taking place; on the other hand, they do not have an adequate understanding of global warming.

Demographic differences between students and teachers and the idea about using the technology of renewable energy

The second research question is “are there any significant differences between respondents’ demographic factors (status/level of formal education, gender, and hometown) and the prevalence of ideas in using the technology of renewable energy?”. This is elaborated using the analysis of Differential Item Functioning (DIF).

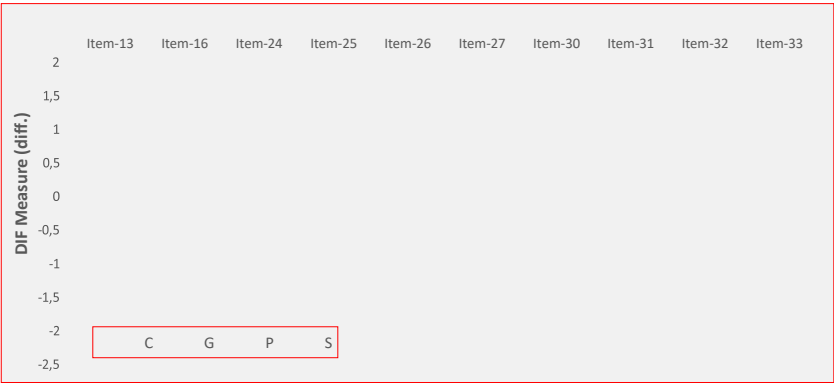


Figure 4. Person DIF plot based on Status/Level of Education.
Respondents: C = Junior High School Students, G = Teachers, P= University Students, S = Senior High School Students

Figure 4 displays the DIF plot based on the respondents’ status and level of formal education. In terms of this factor, nine items are identified having significant differences; 1) teachers as one of the groups of respondents, compared to other groups of respondents, tend to strongly disagree with item 13 (*using the technology of renewable energy can endanger surrounding animals*) and item 16 (*using the technology of renewable energy can endanger surrounding people*); 2) teachers, compared to other groups of respondents, find item 24 important (*the availability of power consumption all the time from the use of renewable energy technology*). Item 25 (*using the technology of renewable energy is not dangerous to plants*), item 26 (*using the technology of renewable energy is not dangerous to animals*), and item 27 (*using the technology of renewable energy is not dangerous to people*) are not that essential for junior high school students; 3) for item 30 (*concerning about the effects of global warming on the environment*), item 31 (*knowledge of global warming*), item 32 (*doing many activities to protect the environment*), and item 33 (*believing that global warming is now occurring*), it is revealed that junior and senior high school students do not concern about the effects of global warming on the environment, have limited knowledge of global warming, rarely do activities that can protect the environment, and do not believe that global warming is taking place today.

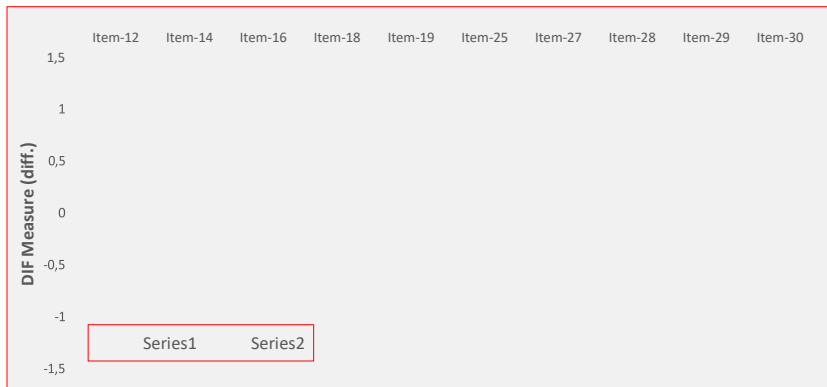


Figure 5. Person DIF plot based on Gender. Series1 = Female, Series2 = Male

Figure 5 shows the result of item DIF based on gender. Based on gender, there are 10 items identified having significant differences. Female respondents, compared to the male, find it difficult to agree with item 14 (*using the technology of renewable energy can suffice power consumption for everyone*), item 16 (*using the technology of renewable energy is not dangerous to surrounding people*), and item 18 (*using the technology of renewable energy is not dangerous to surrounding plants*). Nevertheless, it is way more difficult for male respondents, than the female, to go with item 19 (*using the technology of renewable energy will cause serious environmental issues in the future*). In contrast, male respondents, compared to the female, believe that item 25 (*using the technology of renewable energy is not dangerous to surrounding plants*), item 27 (*using the technology of renewable energy is not dangerous to surrounding people*), item 28 (*using the technology of renewable energy does not give bad effects on global warming*), and item 29 (*respecting friends who appreciate the environment*) are very important. Item 30 (*the effects of global warming on the environment*) gets more concern from male respondents than female respondents.

Figure 6 presents the graphics of nine items that have DIF based on respondents' hometown. Here is the detail; 1) respondents from Gorontalo cannot go with item 8 (*I am willing to pay extra free as long as renewable energy is used*), and only a few of them who understand the effects of global warming (item 31); 2) respondents from Gorontalo Regency do not take into account the danger of using renewable energy to the surrounding plants (item 25); 3) respondents from Boalemo Regency find it difficult to agree with item 19 (*I do not know whether or not the use of renewable energy will cause environmental issues in the future*) and item 21 (*I believe that the effects of global warming will be decreased by using the technology of renewable energy to produce power*); 4) respondents from North Gorontalo Regency strongly agree with item 8 and item 13 (*the use of renewable energy is dangerous to surrounding animals*), they also believe that global warming is now really occurring; 5) respondents from Pohuwato Regency find it very difficult to go with item 8 and tend to be not knowledgeable of the effects of global warming (item 31).

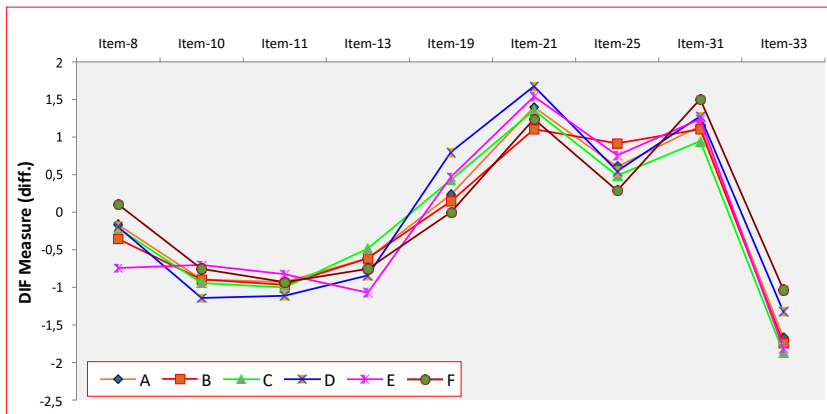


Figure 6. Person DIF plot based on the hometown of the respondents. A=Gorontalo, B=Gorontalo Regency, C=Bone Bolango Regency, D=Boalemo Regency, E=North Gorontalo Regency, F=Pohuwato Regency

DISCUSSION

The purpose of this study is to explore the prevalence of students' and teachers' ideas about renewable energy. It focuses on identifying the ideas generally comprehended by students and teachers, ensuring their knowledge as well as serving as the initial information regarding students' and teachers' knowledge of renewable energy. The main premise is that a strong idea about the advantages of renewable energy and its significance do influence one's resistance, acceptance, or enthusiasm for the advantages of renewable energy (Kiliç et al., 2009).

The first finding, regarding the advantages of using renewable energy, indicates that the safety factor is a priority; meanwhile, the willingness to pay an extra fee to utilize renewable energy is low. The second finding, related to the disadvantages of using renewable energy, shows that students and teachers assume that creating power generation technology from renewable energy sources is way more inexpensive; they also find it difficult to go with the idea that utilizing renewable energy is illogical and damages the environment. The third finding on the respondents' viewpoint on the importance of utilizing renewable energy reveals that the respondents consider it more essential to use power generated from a safer technology of renewable energy generation, it does not endanger the surrounding people, and power consumption is available all the time; compared to the factors of the cost and safety of using renewable energy, the respondents more agree with the importance of utilizing renewable energy as mentioned previously. The last finding reveals that students and teachers strongly believe the occurrence of global warming present day; yet, they admit that they have limited knowledge of global warming effects.

All findings above describe various aspects of respondents' contradictory understanding. For instance, a strong willingness to use the cheaper and safer technology of renewable energy. The respondents possibly do not understand that it requires a big investment of renewable energy technology to produce the all-time, safe, clean, and eco-friendly energy; this is what so called the misconception of the idea of renewable energy (Daniel et al., 2004). For this reason, respondents' factual ideas are that power generation technology driven by

Commented [A8]: Looking Guideline

renewable energy sources is way cheaper than other technologies. Consequently, most respondents do not consent to pay an extra fee for the use of renewable energy.

In addition, a large number of respondents believe that global warming is definitely occurring right now because there are lots of socialization about the effects of global warming. Unfortunately, this fact still has not taken their concern about the surrounding environment; they even rarely carry out activities that protect the environment. This tendency is unfavorable for the acceptance of the adoption of renewable energy technology in the future.

Other ideas that tend to be negatively understood are that the respondents do not know whether or not renewable energy will lead to serious environmental issues. In consequence, they believe that it is not safe to live around the technology of power generation driven from renewable energy sources; the cost for the shutdown is pretty expensive; this technology endangers the lives of animals, plants, and human. Human safety is placed at the last level compared to animals and plants. This indicates that students and teachers commonly get the use of renewable energy wrong.

In the context of global warming, students and teachers believe that it is happening; however, this trust is not supported by their awareness to take care or protect the environment. They even admit that they do not understand well global warming effects. Nevertheless, they are still aware of the significance of utilizing renewable energy to reduce the negative effects of global warming.

From the aspect of status/level of formal education differences, teachers are more knowledgeable than students, and they consider renewable energy is not dangerous to the surrounding animals and people. Moreover, teachers are very concerned about the availability of the all-time power supply sourced from renewable energy. Nonetheless, junior and senior high school students are not concerned about the idea that renewable energy can endanger the surrounding animals, plants, and humans. This fact asserts the next finding that junior and senior high school students do not worry about the effects of global warming on the environment. Further, they also acknowledge that they have limited insight into global warming, so that they rarely do activities that can protect the environment as well as do not know that global warming is now taking place.

From the aspect of gender differences, the prevalence of male and female respondents' ideas are significantly different. Male respondents opine that the use of renewable energy is safer, fulfills the needs of all people and plants. The female respondents, compared to male, tend to go with the thing that renewable energy will cause serious environmental issues in the future. Male respondents, on the other hand, are very concerned with the effects of global warming on the environment. This finding signifies that male respondents are more insightful than female respondents related to the utilization of renewable energy and global warming.

Based on the hometown differences, respondents from Gorontalo are objected to spending more money on power generation technology from renewable energy sources and do not know about the effects of global warming. This is understandable since this region commonly utilizes conventional power and the community has not yet experienced the effects of global warming, e.g., extreme weather, excessive heat, unexpected disasters. For areas outside the city, it is figured out that the respondents are not familiar to the characteristics of the use of renewable energy.

CONCLUSION

This study has reported that the students' and teachers' ideas about the use of renewable energy tend to be contradictive; this reflects a relatively low understanding of this concept. Junior and senior high school students consider that utilizing renewable energy is not essential, yet they concern about the effects of global warming. Thus, their concern about the environment tends to be apprehensive. In contrast, teachers doubt the use of renewable energy technology in producing sustainable energy that is relatively not dangerous to the surrounding people and environment. These findings, overall, show that the students and teachers lack of knowledge of the utilization of renewable energy technology. Nevertheless, this study has limitations and implications in which it is only conducted to students and teachers in Gorontalo as one of the city in Indonesia. It is believed that other provinces have a relatively different prevalence tendency due to the variety of culture and community habits. On that ground, Indonesia needs to develop a literacy education program of the use of renewable energy at various levels of formal education.

ACKNOWLEDGMENT

This research was partially funded by the Directorate of Research and Community Service of Directorate General of Research and Development Strengthening of Ministry of Research, Technology, and Higher Education of the Republic of Indonesia, and USAID through the SHERA program – Centre for Development of Sustainable Region (CDSR). In 2017-2019, CDSR is led by Centre for Energy Studies – Gadjah Mada University.

REFERENCES

- Acikgoz, C. (2011). Renewable energy education in Turkey. *Renewable Energy*, 36(2), 608–611. doi: <https://doi.org/10.1016/j.renene.2010.08.015>
- Adzikri, F., Notosudjono, D., & Suhendi, D. (2014). Strategi pengembangan energi terbarukan di Indonesia. *Jurnal Online Mahasiswa Program Studi Teknik Elektro, Fakultas Teknik Universitas Pakuan, Bogor*, 1–13.
- Assali, A., Khatib, T., & Najjar, A. (2019). Renewable energy awareness among future generation of Palestine. *Renewable Energy*, 254–263. doi: <https://doi.org/10.1016/j.renene.2019.01.007>
- Badan Pembinaan dan Pengembangan Bahasa. (2016). *Kamus Besar Bahasa Indonesia Online*. Retrieved from <https://kbbi.kemdikbud.go.id/>
- Bodzin, A. (2012). Investigating urban eighth-grade students' knowledge of energy resources. *International Journal of Science Education*, 34(8), 1255–1275. doi: <https://doi.org/10.1080/09500693.2012.661483>
- Boone, W. J., Yale, M. S., & Staver, J. R. (2014). Rasch analysis in the human sciences. *Springer Dordrecht Heidelberg London New York Library*. doi: <https://doi.org/10.1007/978-94-007-6857-4>
- Daniel, B., Stanisstreet, M., & Boyes, E. (2004). How can we best reduce global warming? School students' ideas and misconceptions. *International Journal of Environmental Studies*, 61(2), 211–222. doi: <https://doi.org/10.1080/0020723032000087907>
- DeWaters, J. E., & Powers, S. E. (2011). Energy literacy of secondary students in New York State (USA): A measure of knowledge, affect, and behavior. *Energy Policy*, 39(3), 1699–1710. doi: <https://doi.org/10.1016/j.enpol.2010.12.049>
- Fisher Jr., W. P. (2007). Rating scale instrument quality criteria. *Rasch Measurement Transactions*, 21(1), 1095.
- Guardiola, S., Gabay, G., & Moskowitz, H. R. (2009). Renewable energy; Tapping and typing the citizen's mind. *Humanomics*, 25(4), 254–267. doi: <https://doi.org/10.1108/08288660910997629>
- Güney, T. (2019). Renewable energy, non-renewable energy and sustainable development.

- International Journal of Sustainable Development and World Ecology*, 0(0), 1–9. doi: <https://doi.org/10.1080/13504509.2019.1595214>
- Güven, G., & Sulun, Y. (2017). Pre-service teachers' knowledge and awareness about renewable energy. *Renewable and Sustainable Energy Reviews*, 80(May), 663–668. doi: <https://doi.org/10.1016/j.rser.2017.05.286>
- Bang, H. K., & Ellinger, A. E. (2000). Consumer concern, knowledge, belief, and attitude toward renewable energy: An application of the reasoned action theory. *Psychol Market*, 17(6), 449–468. doi: [https://doi.org/10.1002/\(SICI\)1520-6793\(200006\)17:6<449::AID-MAR2>3.0.CO;2-8](https://doi.org/10.1002/(SICI)1520-6793(200006)17:6<449::AID-MAR2>3.0.CO;2-8)
- Johansson, M., & Laike, T. (2007). Intention to respond to local wind turbines: The role of attitudes and visual perception. *Wind Energy*, 10(5), 435–451. doi: <https://doi.org/10.1002/we.232>
- Kandpal, T. C., & Broman, L. (2014). Renewable energy education: A global status review. *Renewable and Sustainable Energy Reviews*, 34, 300–324. doi: <https://doi.org/10.1016/j.rser.2014.02.039>
- Kiliç, A., Stanisstreet, M., & Boyes, E. (2009). Incentives and disincentives for using renewable energy: Turkish students' ideas. *Renewable and Sustainable Energy Reviews*, 13(5), 1089–1095. doi: <https://doi.org/10.1016/j.rser.2008.03.007>
- Kiliç, A., Stanisstreet, M., & Boyes, E. (2008). Turkish students' ideas about global warming. *International Journal of Environmental & Science Education*, 3(2), 89–98.
- Komendantova, N., Yazdanpanah, M., & Shafiei, R. (2018). Studying young people' views on deployment of renewable energy sources in Iran through the lenses of social cognitive theory. *AIMS Energy*, 6(2), 216–228. doi: <https://doi.org/10.3934/energy.2018.2.216>
- Rose, L. S., & Barton, C. A. (2012). Should great lakes city build a new power plant? How youth navigate socioscientific issues. *Journal of Research in Science Teaching*, 49(5), 541–567. doi: <https://doi.org/10.1002/tea.21017>
- Linacre, J. M. (2012). A User's Guide to W I N S T E P S ® M I N I S T E P Rasch-Model Computer Programs Program Manual 3.75.0. ISBN 0-941938-03-4
- Martin, S., & Jucker, R. (2005). Educating earth-literate leaders. *Journal of Geography in Higher Education*, 29(1), 19–29. doi: <https://doi.org/10.1080/03098260500030298>
- Ntona, E., Arabatzis, G., & Kyriakopoulos, G. L. (2015). Energy saving: Views and attitudes of students in secondary education. *Renewable and Sustainable Energy Reviews*, 46, 1–15. doi: <https://doi.org/10.1016/j.rser.2015.02.033>
- Nugroho, H., Fei-Lu, S., & Firmansyah. (2017). Developing renewable energy in developing countries: A lesson from Indonesia. *Energy Sources, Part B: Economics, Planning and Policy*, 12(4), 318–325. doi: <https://doi.org/10.1080/15567249.2015.1072599>
- Panwar, N. L., Kaushik, S. C., & Kothari, S. (2011). Role of renewable energy sources in environmental protection: A review. *Renewable and Sustainable Energy Reviews*, 15(3), 1513–1524. doi: <https://doi.org/10.1016/j.rser.2010.11.037>
- Rahayu, S. (2017). Promoting the 21st century scientific literacy skills through innovative chemistry instruction (Vol. 020025, p. 020025). *AIP Conference Proceedings*, America: AIP Publishing. doi: <https://doi.org/10.1063/1.5016018>
- Skamp, K., Boyes, E., Stanisstreet, M., Rodriguez, M., Malandrakis, G., Fortner, R., & Yoon, H. G. (2019). Renewable and nuclear energy: An international study of students' beliefs about, and willingness to act, in relation to two energy production scenarios. *Research in Science Education*, 49(2), 295–329. doi: <https://doi.org/10.1007/s11165-017-9622-6>
- Sumintono, B., & Widhiarso, W. (2014). *Aplikasi model Rasch untuk penelitian ilmu-ilmu sosial*. In B. Trim (Ed.). Cimahi: Trim Komunitas Publishing House. Retrieved from <https://www.researchgate.net/publication/268688933%0AAplikasi>
- Sumintono, B., & Widhiarso, W. (2015). *Aplikasi pemodelan Rasch pada assessment*

- pendidikan. Cimahi: Trim Komunikata. Retrieved from <https://www.researchgate.net/publication/282673464%0AAplikasi>
- Sutter, A. M. K., Dauer, J. M., Kreuziger, T., Schubert, J., & Forbes, C. T. (2019). Sixth grade students' problematization of and decision-making about a wind energy socio-scientific issue. *International Research in Geographical and Environmental Education*, 0(0), 1–15. doi: <https://doi.org/10.1080/10382046.2019.1613586>
- The Intergovernmental Panel on Climate Change. (2018). *Global warming of 1,5°C: Special report*. Intergovernmental Panel on Climate Change, 2018. Retrieved from <https://www.ipcc.ch/sr15/>
- The United Nations Conference on Environment and Development. (1992). Environmentally sound management of solid wastes and sewage-related issues. *United Nations Sustainable Development*, (June), 254–266.
- Tondang, R. (2019a). *Akankah Indonesia terus bertahan dengan bahan bakar fosil ?*. Retrieved from <https://ekonomi.kompas.com/read/2018/09/06/104511326/akankah-indonesia-terus-bertahan-dengan-bahan-bakar-fosil> Kompas.com website:
- Tondang, R. (2019b). *Peningkatan energi terbarukan , tantangan besar bagi Indonesia*. Retrieved from <https://ekonomi.kompas.com/read/2018/08/28/160220126/peningkatan-energi-terbarukan-tantangan-besar-bagi-indonesia?page=all> Kompas.com website:
- Bond, T. G., Fox, C. M. (2015). *Applying the Rasch model: Fundamental measurement in the human sciences (third edition)*. New York and London: Routledge Taylor & Francis Group. Retrieved from <https://www.routledge.com/Applying-the-Rasch-Model-Fundamental-Measurement-in-the-Human-Sciences/Bond-Fox/p/book/9780415833424>
- Wolsink, M. (2007). Wind power implementation: The nature of public attitudes: Equity and fairness instead of “backyard motives.” *Renewable and Sustainable Energy Reviews*, 11(6), 1188–1207. doi: <https://doi.org/10.1016/j.rser.2005.10.005>
- Worrell, E., Bernstein, L., Roy, J., Price, L., & Harnisch, J. (2009). Industrial energy efficiency and climate change mitigation. *Energy Efficiency*, 2(2), 109–123. doi: <https://doi.org/10.1007/s12053-008-9032-8>
- Yang, S. C., Tsou, M. Y., Chen, E. T., Chan, K. H., & Chang, K. Y. (2011). Statistical item analysis of the examination in anesthesiology for medical students using the Rasch model. *Journal of the Chinese Medical Association*, 74(3), 125–129. doi: <https://doi.org/10.1016/j.jcma.2011.01.027>
- Zarnikau, J. (2003). Consumer demand for “green power” and energy efficiency. *Energy Policy*, 31(15), 1661–1672. doi: [https://doi.org/10.1016/S0301-4215\(02\)00232-X](https://doi.org/10.1016/S0301-4215(02)00232-X)
- Zyadin, A., Puhakka, A., Ahponen, P., Cronberg, T., & Pelkonen, P. (2012). School students' knowledge, perceptions, and attitudes toward renewable energy in Jordan. *Renewable Energy*, 45, 78–85. doi: <https://doi.org/10.1016/j.renene.2012.02.002>

Commented [A9]: Translate to English and looking guidelines

Appendix A: Questionnaire

1. Global Warming. Have you heard of or know this term?
2. Where did the first time you heard of the explanation about Global Warming?
3. What do you think about Global Warming?
4. Renewable Energy. Have you heard of or know this term?
5. Where did the first time you heard of the explanation about Renewable Energy?
6. What do you think about Renewable Energy?
7. Renewable energy sources are unlimited, clean, practical, economical, and eco-friendly. Which of the following are the Renewable Energy Sources? (Choosing more than one options is allowed).
8. Which of the following are the types of power generation that use renewable energy sources to produce electrical energy? (Choosing more than one options is allowed).
9. I will be willing to pay extra fee as long as the power consumption in my house is produced by power generation that uses renewable energy sources (river flow, wind, waves, and sun).
10. I will only be willing to pay extra fee to the power consumption in my house produced by power generation that uses renewable energy sources (river flow, wind, waves, and sun), if everyone does the same.
11. I will not be staying near the power generation that uses renewable energy sources (river flow, wind, waves, and sun).
12. I think that creating power generation that uses renewable energy sources (river flow, wind, waves, and sun) is way cheaper than other methods.
13. I believe that power generation from renewable energy sources (river flow, waves, and sun) is safer than the one from other energy sources.
14. I think that power generation from renewable energy sources (river flow, wind, waves, and sun) can endanger the surrounding animals.
15. I believe that power consumption will be sufficient for everyone only by utilizing renewable energy sources (river flow, wind, waves, and sun).
16. I assume that power generation from renewable energy sources (river flow, wind, waves, and sun) will spend higher cost in the shutdown than the power generation from other energy sources.
17. I think that power generation from renewable energy sources (river flow, wind, waves, and sun) can endanger the surrounding people.
18. I believe that power generation from renewable energy sources (river flow, wind, waves, and sun) can produce a continuous supply of electrical energy, available at all times.
19. I assume that power generation from renewable energy sources (river flow, wind, waves, and sun) can endanger the surrounding plants.
20. I do not know whether or not power generation from renewable energy sources (river flow, wind, waves, and sun) will cause serious environmental issues in the future.
21. I think that most teenagers have the same viewpoint that the idea about power consumption from renewable energy sources (river flow, wind, waves, and sun) is illogical and damages the environment.
22. I believe that global warming will be decreased if more power generations from renewable energy sources (river flow, wind, waves, and sun) are built.
23. How important is it to you if the power consumption in your house does not cost too much?
24. How important is it to you if the power generation in your house is considered safe?
25. How important is it to you if the power supply in your house can be reliable and you can get that supply all the time?
26. How important is it to you if the power generation in your house is not dangerous to the surrounding plants?
27. How important is it to you if the power generation in your house is not dangerous to the surrounding animals?
28. How important is it to you if the power generation in your house is not dangerous to the surrounding people?
29. How important is it to you that making the power consumption in your house will not worsen the global warming?
30. How important is it to you to get and hold respect from your friends?
31. How concerned are you about the effects of global warming on the environment?

32. How well do you know about global warming?
33. What do you think about “eco-friendly”? How well do you protect the environment with the things you always do?
34. Do you believe that global warming is really occurring now?

Appendix B Summary Statistics

SUMMARY OF 1522 MEASURED Person									
	TOTAL SCORE	COUNT	MEASURE	MODEL ERROR	INFIT		OUTFIT		
					MNSQ	ZSTD	MNSQ	ZSTD	
MEAN	83.1	26.0	.66	.25	1.01	-.2	1.01	-.2	
S.D.	8.7	.2	.54	.02	.49	1.8	.49	1.8	
MAX.	108.0	26.0	2.59	1.01	3.66	5.8	4.19	6.4	
MIN.	27.0	22.0	-5.11	.24	.12	-5.6	.13	-5.6	
REAL RMSE	.27	TRUE SD	.46	SEPARATION	1.70	Person	RELIABILITY	.74	
MODEL RMSE	.25	TRUE SD	.47	SEPARATION	1.91	Person	RELIABILITY	.78	
S.E. OF Person MEAN = .01									
Person RAW SCORE-TO-MEASURE CORRELATION = .99									
CRONBACH ALPHA (KR-20) Person RAW SCORE "TEST" RELIABILITY = .77									
SUMMARY OF 26 MEASURED Item									
	TOTAL SCORE	COUNT	MEASURE	MODEL ERROR	INFIT		OUTFIT		
					MNSQ	ZSTD	MNSQ	ZSTD	
MEAN	4865.8	1520.1	.00	.03	1.00	-.1	1.01	-.1	
S.D.	507.8	1.7	.67	.00	.17	4.8	.17	4.9	
MAX.	6210.0	1522.0	1.15	.04	1.44	9.9	1.45	9.9	
MIN.	3980.0	1516.0	-1.10	.03	.67	-9.9	.69	-9.9	
REAL RMSE	.03	TRUE SD	.67	SEPARATION	19.75	Item	RELIABILITY	1.00	
MODEL RMSE	.03	TRUE SD	.67	SEPARATION	20.36	Item	RELIABILITY	1.00	
S.E. OF Item MEAN = .13									
UMEAN=.0000 USCALE=1.0000									
Item RAW SCORE-TO-MEASURE CORRELATION = -.75									
39523 DATA POINTS. LOG-LIKELIHOOD CHI-SQUARE: 90226.45 with 37971 d.f. p=.0000									
Global Root-Mean-Square Residual (excluding extreme scores): .8011									

Appendix C Unidimensionality

Table of STANDARDIZED RESIDUAL variance (in Eigenvalue units)				
		-- Empirical --		Modeled
Total raw variance in observations	=	39.0	100.0%	100.0%
Raw variance explained by measures	=	13.0	33.3%	33.9%
Raw variance explained by persons	=	2.9	7.5%	7.6%
Raw Variance explained by items	=	10.1	25.8%	26.3%
Raw unexplained variance (total)	=	26.0	66.7%	100.0%
Unexplnd variance in 1st contrast	=	4.0	10.4%	15.6%
Unexplnd variance in 2nd contrast	=	2.5	6.5%	9.8%
Unexplnd variance in 3rd contrast	=	1.7	4.3%	6.5%
Unexplnd variance in 4th contrast	=	1.5	3.8%	5.7%
Unexplnd variance in 5th contrast	=	1.3	3.3%	5.0%

Appendix D Rating Scale Analysis

SUMMARY OF CATEGORY STRUCTURE. Model="R"
FOR GROUPING "A" Item NUMBERS: 1-14 26

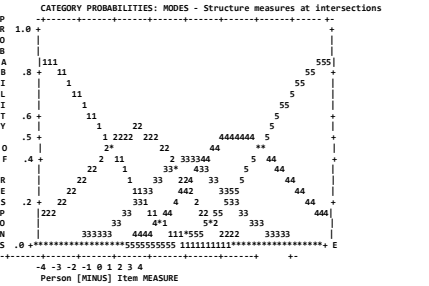
CATEGORY	OBSERVED	OBSVD SAMPLE	INFIT	OUTFIT	ANDRICH	CATEGORY		
LABEL	SCORE	COUNT %	AVRGE	EXPECT	MNSQ	MNSQ	THRESHOLD	MEASURE
1	1	929 .0	-.52	-.671	1.14	1.16	NONE	(-3.34) 1
2	2	5239 23	-.19	-.19	.98	.98	-2.12	-1.38 2
3	3	7272 32	.21	.19	1.10	1.14	-.33	.02 3
4	4	7801 32	.55	.59	1.07	1.00	.38	1.39 4
5	5	2065 9	1.02	1.05	1.08	1.08	2.07	(3.30) 5

MISSING	24	0	.53					

OBSERVED AVERAGE is mean of measures in category. It is not a parameter estimate.

CATEGORY	STRUCTURE	SCORE-TO-MEASURE	SQR CUM.	COHERENCE	ESTIM						
LABEL	MEASURE	S.E.	AT CAT.	---ZONE---	PROBABILITY	M->C	C->M	RMSR	DISCR		
1	NONE		(-3.34)	-INF	-2.46	66%	2%	1.7261	1		
2	-2.12	.04	-1.38	-2.46	-.62	-2.27	45%	21%	.9530	.95	2
3	-.33	.02	.02	-.62	.65	-.51	36%	67%	.5049	.92	3
4	.38	.02	1.39	.65	2.43	.55	48%	44%	.7671	.78	4
5	2.07	.02	(3.30)	2.43	+INF	2.23	53%	2%	1.3934	-.98	5

M->C = Does Measure imply Category?
C->M = Does Category imply Measure?



SUMMARY OF CATEGORY STRUCTURE. Model="R"
FOR GROUPING "B" Item NUMBERS: 15-25

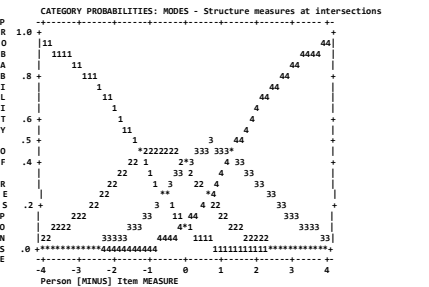
CATEGORY	OBSERVED	OBSVD SAMPLE	INFIT	OUTFIT	ANDRICH	CATEGORY		
LABEL	SCORE	COUNT %	AVRGE	EXPECT	MNSQ	MNSQ	THRESHOLD	MEASURE
1	1	422 3	.24	.19	1.04	1.08	NONE	(-2.53) 1
2	2	2509 15	.68	.78	.89	.86	-1.25	-.76 2
3	3	6824 41	1.10	1.14	.89	.90	-.04	-.74 3
4	4	6962 42	1.53	1.46	.89	.93	1.28	(2.55) 4

MISSING	25	0	.84					

OBSERVED AVERAGE is mean of measures in category. It is not a parameter estimate.

CATEGORY	STRUCTURE	SCORE-TO-MEASURE	SQR CUM.	COHERENCE	ESTIM					
LABEL	MEASURE	S.E.	AT CAT.	---ZONE---	PROBABILITY	M->C	C->M	RMSR	DISCR	
1	NONE		(-2.53)	-INF	-1.72	81%	3%	1.7776	1	
2	-1.25	.05	-.76	-1.72	-.01	-1.47	40%	12%	1.0000	.98
3	-.04	.02	.74	-.01	1.73	-.02	46%	86%	.3437	1.09
4	1.28	.02	(2.55)	1.73	+INF	1.49	73%	35%	.6601	1.45

M->C = Does Measure imply Category?
C->M = Does Category imply Measure?





The Prevalence of Students and Teachers' Ideas about Global Warming and the Use of Renewable Energy Technology

Lukman Abdul Rauf Laliyo^{1†}, Fenty U. Puluhalawa², Sunarty Eraku³, Yuszda K. Salimi¹

¹ Department of Chemistry, Universitas Negeri Gorontalo, Indonesia

² Department of Law, Universitas Negeri Gorontalo, Indonesia

³ Department of Geography, Universitas Negeri Gorontalo, Indonesia

Submission Info

Communicated by Theodore Endreny
Received 14 December 2019
Accepted 9 February 2020
Available online 1 October 2020

Keywords

Prevalence
Global warming
Renewable energy

Abstract

This study aims to explore the prevalence of students' and teachers' ideas about global warming and the use of renewable energy technology in Gorontalo, Indonesia. Employing a non-experimental quantitative approach, the data were collected from 1522 respondents and analyzed with the WINSTEPS 3.73 Rasch software. This study reports that 97.6% and 76.08% of the respondents respectively understand the concepts of global warming and renewable energy from the internet (45%) and formal education (<40%). Respondents' level/status of education, gender, and hometown cause some differences in their ideas prevalence. High school students consider that utilizing renewable energy is not crucial; they also do not concern about global warming effects and the environment. Teachers and university students do not believe that using renewable energy can produce sustainable energy; they also question the safety of renewable energy technology. These findings indicate the needs for a renewable energy literacy program in formal education in Indonesia.

©2020 L&H Scientific Publishing, LLC. All rights reserved.

1 Introduction

The increase in global warming, largely due to the greenhouse effect, has begun to be considered as a real phenomenon over the past two decades (Kiliç et al., 2009). In line with this issue, people are also more aware of the effects of global warming on the global, social, and economic environment (Guven and Sulun, 2017). According to The Intergovernmental Panel on Climate Change, 2018, the latest information reported by the most authoritative source explains that some negative consequences of global warming have occurred; although the increase in greenhouse gas emissions in the atmosphere can be stabilized, these consequences are still difficult to avoid until today. A special report states that the effects of global warming have led to an increase in the earth's surface temperature by around 1.5°C. According to Güney, 2019; Kiliç et al., 2009; Ntona et al., 2015. several political leaders in the developed countries, although they have different perspectives on certain cases, have admitted the truth and the urgent needs to reduce greenhouse gas emissions on a world scale.

[†]Corresponding author.

Email address: lukman.laliyo@ung.ac.id

According to Guven and Sulun, 2017, most developed countries prefer to use energy from fossil fuel, such as petroleum and coal. In addition to the low price, the technology utilized to produce such energy has significantly improved in the last two centuries. According to Panwar et al., 2011, nevertheless, the utilization of this fossil fuel has contributed to the increase in greenhouse gas concentrations, e.g., CO₂, CH₄, CFCs, halon, N₂O, ozone, peroxyacetyl nitrate in the atmosphere which tends to be more alarming. Consequently, the earth's surface temperature has increased and caused negative effects on human health and environment, particularly air pollution, acid rain, global warming, and climate change.

According to Panwar et al., 2011; Worrell et al., 2009, one of the largest contributions to the increasing CO₂ in the atmosphere is human activities, e.g., using conventional fuel for vehicle and electrical energy generation. Various studies reveal that CO₂ in the atmosphere has gone up to approximately 31 percent in 200 years; meanwhile, global gas emissions have increased by around 37 percent. Moreover, the world temperature has increased by averagely 0.7oC.

According to Acikgoz, 2011, the issues arisen from the effects of global warming along with the world oil crisis in 1973 have motivated the developed countries to resolve it by developing two main strategies, including 1). Reducing greenhouse gas emissions produced by the utilization of fossil energy; 2). Developing technology to produce energy from non-carbon alternative sources, this attempt is intended to produce energy from renewable and sustainable sources as well as being able to minimize waste, to decrease air pollution and greenhouse gas emissions, and protect forest and nature.

According to Guardiola et al., 2009, the production of renewable energy, that can be sourced from the sun, wind, geothermal and hydraulic energy as clean energy sources, does not produce toxic greenhouse gas and not pollute the environment; it will always be used and renew itself naturally. The developed countries have carried out the implementation of both strategies to decrease the effects of global warming. However, the developing countries, Indonesia, for instance, tend to face a big challenge, emerging from the investment, technology readiness, and community support in particular. This present study focuses on exploring the community support and participation, especially in terms of technology utilization driven by renewable energy sources.

As reported in some print media, Indonesia is the fourth largest population in the world, with an estimated population of 252 million; they are assumed to use fossil energy at 893 Mboe (barrel of oil equivalent) (Nugroho et al., 2017). According to Tondang, 2019a, in the Southeast Asia region, on the other hand, Indonesia is one of the countries with the largest energy consumers (Tondang, 2019a) and is trying to optimize the use of abundantly-available renewable energy resources (Adzikri et al., 2014). According to the World Bank 2019, the level of power use in Indonesia is around 812 kWh per capita. This number is higher than India and is predicted to continue to increase every year.

According to Tondang, 2019b, Indonesia geographically has the potentials for developing renewable energy. It is able to generate 716 GW of energy from solar photovoltaic (solar PV), hydropower, bioenergy, geothermal, ocean wave power, and wind. Nonetheless, Indonesia still needs to encounter a big challenge, specifically the limited open field for energy utilization from solar PV, high investment cost for new and renewable technology use, and little support and participation from the community. According to Kiliñç et al., 2009; Wolsink, 2007, Community support and participation play an important role in the transition of the use of renewable energy technology. Regarding this, a study in Europe figures out that society provides good support for the further implementation of developing renewable energy technology. Indonesia, in contrast, finds it challenging to obtain scientific information related to community acceptance and support about the utilization of renewable energy. According to Daniel et al., 2004, for this reason, a study on the extent to which students and teachers contribute to reducing global warming and their behavior towards the use of renewable energy should have been conducted.

According to Zarnikau, 2003, several previous studies focus on the level of community acceptance and support towards the renewable energy utilization, e.g., people's needs for "green energy" and energy efficiency, perception and behavior on the development of renewable energy (Johansson and Laike, 2007), environmental concern and consumers' trust on renewable energy (Bang and Ellinger, 2000), energy conservation and awareness of renewable energy (Assali et al., 2019), renewable energy and its sustainable development (Güney, 2019).

Besides, a study related to students' and teachers' knowledge include the prospective teachers' knowledge and awareness of renewable energy (Guven and Sulun, 2017), students' trust on the benefits of nuclear and renewable energy (Skamp et al., 2019), students' ideas and viewpoint on renewable energy (Kılınç et al., 2008; Komen-dantova et al., 2018), students' knowledge, perception, and behavior towards renewable energy (Ntona et al., 2015; Zyadin, Puhakka et al., 2012), renewable energy education (Acikgoz, 2011). Furthermore, by adopting the method from the conducted study, the purpose of this present study is to explore the prevalence of ideas of students and teachers in Indonesia, as the consumer generation, educator, and decision-maker in the future towards the use of renewable energy.

Prevalence refers to the general viewpoint (Badan Pembinaan dan Pengembangan Bahasa, 2016). The prevalence of the idea of utilizing renewable energy can be defined as a general idea that is commonly understood, related to the use of renewable energy. Ideas are constructively formed by individuals who always learn. According to T Rahayu, 2017, heir learning process of experience will determine the quality of the idea construction. If the idea construction of renewable energy use is obtained directly from the formal learning experience, students' and teachers' ideas will be more meaningful. It implies that they can understand well the characteristics of the utilization of renewable energy and to show holistic and interrelated viewpoint between technology and the use of renewable energy as well as the reduction of the bad effects of global warming on the environment. By exploring this idea, the readiness of students and teachers can be evaluated as an effort to explain the extent to which the level of acceptance and sustainability of the adoption of renewable energy technology will be achieved in the future. If the ideas tendency contradicts each other, it will raise a presumption that students and teachers understand the concept of renewable energy utilization and global warming in a partial way, not in a holistic way. This can also elaborate on the reason for students' and teachers' low concern on the environment.

This study is a significant part to "read" (learn about) the prevalence of ideas of renewable energy use among students and teachers as formal educators. The urgency is based on the needs to evaluate the readiness level of knowledge and comprehension of renewable energy and its utilization as a consumer, educator, and energy decision-maker in the future. The significance is that since formal education is a strategic medium to grow concern about and adoption of renewable energy technology, then the prevalence of ideas among students and teachers should have represented a positive tendency for the use of renewable energy.

According to Assali et al., 2019, the failure of applying renewable energy in any country is due to the low awareness of the community, unsuccessful policy, and market characteristics. The lack of community acceptance and willingness to utilize renewable energy can serve as the main barrier for renewable energy diffusion. According to Schubert and Forbes, 2019, hence, it is crucial for the community in general, students and teachers in particular, to expand their basic understanding of the concept of energy and the ability to make a decision based on the information about the issues of renewable energy utilization. This is what the world of education and learning in schools are responsible for. According to Martin and Jucker, 2005, education plays a vital role in raising awareness of environment, skill, and behavior (The United Nations Conference on Environment and Development, 1992); University, in particular, contributes significantly to educating "future leaders".

According to Kandpal and Broman, 2014, a topic about energy has been learned in primary and high schools, even been introduced since children reach the age of 5. A small part of this present study studies the insight of the high schools' students; it reveals that they generally have limited knowledge of the main concept of energy (Bodzin, 2012; DeWaters and Powers, 2011; Rose and Barton, 2012). More than half of the students can define renewable energy accurately, and only 36.1% of the total students at grade VIII who can correctly identify natural gas as the renewable energy source. Moreover, less than half of the students can identify coal as abundant fossil fuel in the United States. According to Bodzin, 2012; DeWaters and Powers, 2011, a study reported by Rose and Barton (2012) concludes that high school students tend to present a complex thought and consider various perspectives if they are asked to state their decision about the use of power generation technology. They ultimately choose to agree with the social benefits of utilizing energy with a lower cost, compared to the effects of reducing carbon emissions drastically. In the context of education in Indonesia, it encounters a different

Table 1 Demographic profile of respondents (N=1522).

Demographics	Respondents	Percentage (%)
Gender		
Male	523	34.36
Female	999	65.64
Level of Education		
Junior High School Students	304	19.97
Senior High School Students	527	34.63
University Students	547	35.94
Teachers	147	9.66
Hometown		
Gorontalo	1011	66.43
Gorontalo Regency	214	14.06
Bone Bolango Regency	145	9.53
Boalemo Regency	57	3.75
North Gorontalo Regency	36	2.37
Pohuwato Regency	59	3.88

reality; this encourages the idea of conducting this study in order to answer two questions, including

a) how is the prevalence of students' and teachers' ideas about the use of renewable energy?

b) are there any significant differences in the prevalence of students' and teachers' ideas about the utilization of renewable energy based on their demographic differences (level of education, gender, and hometown)?

2 Method of study

2.1 Respondents

Employing a quantitative survey approach, this study used the prevalence of students' and teachers' ideas about the use of renewable energy as the variable measured by a questionnaire. It was conducted in March 2019 and applied the convenience sampling in selecting the sample; the respondents were directly given a questionnaire. Concerning ethical considerations, respondents' consent to participate in this present study was firstly asked before filling out the questionnaire. Participation was very voluntary and used anonymity. Respondents' demographic profile is presented in Table 1.

2.2 Instrument

A questionnaire with closed-ended questions was developed to measure the prevalence of respondents' (students and teachers) ideas about the utilization of renewable energy. In this present study, the prevalence of ideas was measured based on the aspects of knowledge, viewpoint, and behavior of the respondents about the concepts of global warming, the types of renewable energy resources, the characteristics of renewable energy, the advantages and disadvantages of using the technology of renewable energy. The majority of the questionnaire contents (see Appendix A) was adapted from the instrument used by Kiliç et al. (2009); Yang, Tsou, Chen, Chan, and Chang (2011).

In the first section, the respondents were asked to fill out demographic questions, i.e., name, status/level of education, and hometown. Further, they were requested to answer four groups of items, including 1) a group of item functioned to identify the respondents' knowledge of the concepts of global warming, renewable energy, the types of renewable energy resources, renewable energy products, and the sources of the respondents recognize

Table 2 Reliability of person and item.

	Person (N=1522)	Item (N=26)
Mean	0.66	0.00
Deviation Standard	0.54	0.67
Separation index	1.70	19.75
Reliability index	0.74	1.00
Cronbach Alpha (KR-20)	0.77	-

the term global warming and renewable energy at the first time; this group was started from item 1 to item 7; 2) a group of item intended to measure the respondents' knowledge of the characteristics of renewable energy as well as the advantages and disadvantages of using power generation technology from renewable energy sources; this group was started from item 8 to item 21. Respondents' responses had been provided, and they needed to select one of five options; strongly disagree (SD), disagree (D), neutral (N), agree (A), or strongly agree (SA); 3) a group of item used to measure students' viewpoint related to the importance of utilizing renewable energy technology. Viewpoint, in this context, reflects respondents' opinion (behavior) regarding renewable energy; this group was started from item 22 to item 29. Respondents chose one of four options provided; very unimportant (VU), unimportant (U), important (I), very important (VI).

Unlike the previous three groups of items, the fourth group of items measured the level of respondents' awareness of global warming effects on the environment; this group was started from item 30 to 33. The characteristics of each item were different from one another, initiated by the question of the extent to which they concerned about the effects of global warming on the environment. Four options provided to the respondents included really unconcerned (RU), a bit concerned (BC), concerned (C), and really concerned (RC). In addition, respondents' responses to how well they know about the effects of global warming were asked. Respondents selected one of four options of very unknowledgeable (VU), a bit knowledgeable (BK), knowledgeable (K), very knowledgeable (VK). The next question was about whether or not they always protect the environment, in which the provided responses consisted of not at all (NAA), once in a while (OW), sometimes (S), always (A). Lastly, the respondents were asked about their opinion about whether or not global warming recently occurs; the provided responses were I believe that global warming does not occur (IBGWDNO), I think that global warming does not occur (ITGWDNO), I do not know that global warming occurs (IDNKGWO), I think that global warming occurs (ITGWO), I believe that global warming occurs (IBGWO).

After the actual data were collected, respondents' responses were divided into two data groups. The first group (responses for item 1-7) was analyzed employing the descriptive percentage method; the second group (responses for item 8-33) was tabulated into the Microsoft Excel format, and was analyzed using the WINSTEPS 3.73 version software as the Rasch measurement model. According to Linacre, 2012; Bond & Fox, 2015), the validity and reliability of the instrument were obtained through the calibration of the levels of item difficulty and respondents' ability. WINSTEPS software mathematically transformed raw ordinal data (Likert-typed data), based on the response frequency that came up as a probability, to logit (log-odds) through logarithmic functions that assessed the suitability of the whole instrument and the respondents.

The reliability value of the internal instrument is shown in Table 2 that was processed based on the data (see Appendix B). This value referred to the result of "summary of fit statistics" or reliability index in the form of logit measure, as the determinant of questionnaire quality and instrument psychometrics.

2.3 Unidimensionality and rating scale analysis

Table 2 indicates that the Person Reliability Index (0.74) empirically showed pretty good consistency in respondents' responses (Sumintono and Widhiarso, 2014), implying that the scale was able to discriminate respondents' responses very well. It also applied to the Item Reliability Measure (1.00) that was categorized "very

good” (Sumintono and Widhiarso, 2015), meaning that the respondents’ had a very high probability in responding to the questionnaire items. The estimation of the high value of the item reliability signified that the item greatly defined the latent variables (Bond and Fox, 2015). According to this measurement result of the Person and Item Reliability, the questionnaire was reliable to be used in various groups of respondents.

2.4 Cronbach alpha

The coefficient value of Cronbach Alpha KR-20 (0.77) described a good interaction among 1522 respondents with 26 items (Sumintono and Widhiarso, 2015). It implied that the instrument was reliable for having excellent consistency in internal psychometrics.

2.5 Person and item separation index

Respondents separation index (Person Separation Index) is an estimated value functioned to discriminate respondents’ ability, or in this case, is the latent characteristics (of the measured item). The higher the Person Separation Index, the higher the respondents’ probability in responding to those items accurately. Person Separation Index also indicated the item’s distribution, from the easiest to the most difficult items (Boone et al., 2014); the broader the distribution, the better the items. Based on Table 2, the Person Separation Index (1.70) and Item Separation Index (19.75) showed fairly good distribution of questionnaire items to various respondents and items. The results of this criteria measurement asserted that the used questionnaire was reliable and suitable to measure the prevalence of respondents’ ideas in understanding the utilization of renewable energy.

2.6 Data analysis

Respondents’ data analysis in the first group of item (item 1-7) employed descriptive statistics and average value. On the contrary, respondents’ data analysis in the second, third, and fourth groups (item 8-33) used the WINSTEP 3.73 version software as the Rasch measurement model. The average value in the Rasch measurement model was in the form of a logit scale that had been converted from the score of the Likert scale. The higher the logit value of the item, the higher the difficulty of the item; meaning that the item would be complicated for the respondents to work on. The Differential Item Functioning was intended to identify respondents’ responses based on their demographic profile (gender, level of education, and hometown). This analysis would inform the acceptable items according to respondents’ demographic characteristics. Thus, this analysis was the most suitable method to explain empirical facts as in line with the purpose of this study.

3 Results

3.1 Knowledge of global warming and renewable energy

Figure 1 displays the graphics of respondents’ responses over the questions “do you know the term global warming?” (item 1), “where did the first time you know about global warming?” (item 2), “do you know the term renewable energy?” (item 3), “where did the first time you know about renewable energy?” (item 4).

Almost all respondents (97.6%) recognize the term global warming and only three-quarters of the total respondents (76.08%) who know the term renewable energy. They get those terms mostly from the internet (45%); less than 40% of the respondents know both terms from formal education, i.e., Junior High School, Senior High School, and University. Additionally, Figure 2 presents the graphics of respondents’ responses over the definition of renewable energy (item 5), renewable energy sources (item 6), and renewable energy technology (item 7).

More than three-quarters of the respondents (81.08%) opine that renewable energy is energy that can be regenerated or renewable as its term; a small number of respondents (13.86%) cannot define renewable energy. The most widely known sources of renewable energy are sun (58.34%), wind (54.27%), river (36.79%),

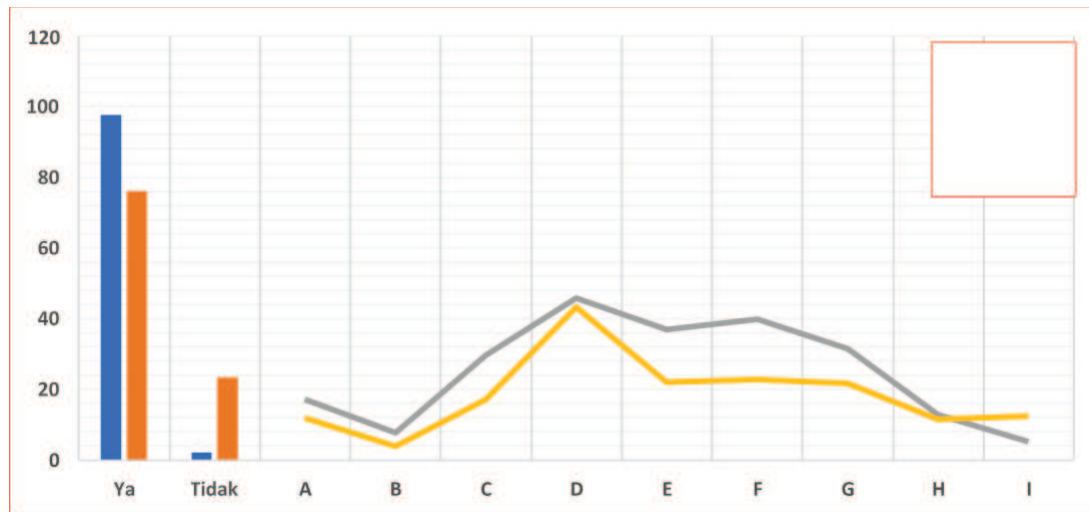


Fig. 1 Respondents' knowledge of global warming and renewable energy. Ya= Yes, Tidak= No, A= Friend, B= Family, C= Print Media, D= Internet, E= Elementary School, F= Junior High School, G= Senior High School, H= University, I= Others.

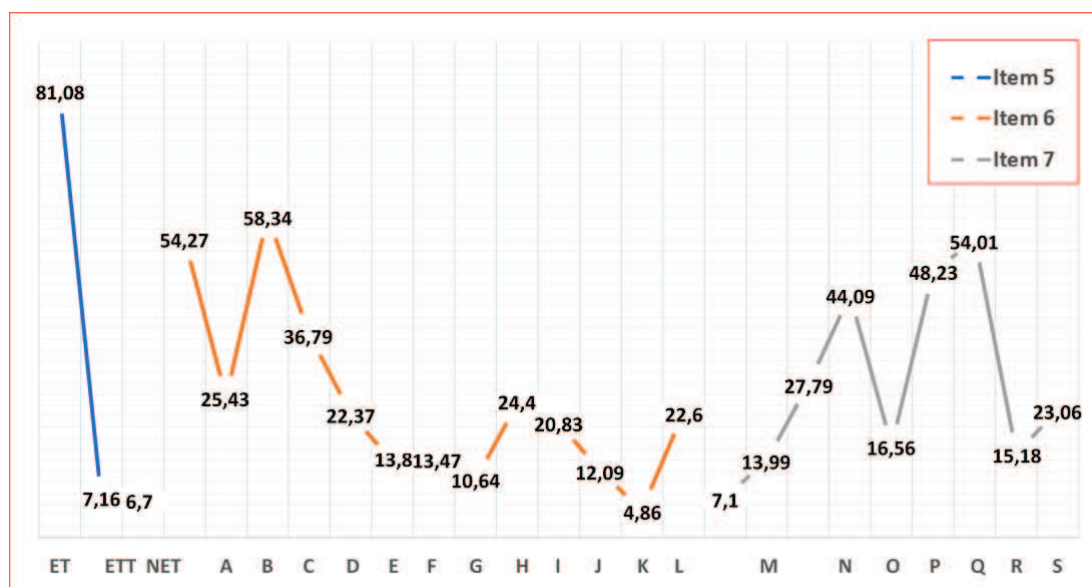


Fig. 2 Respondents' responses over the definition of renewable energy (item 5), renewable energy sources (item 6), and renewable energy technology (item 7). ET= renewable energy, ETT= non-renewable energy, NET= Others, A= wind, B= waves, C= sun, D= river, E= underground water, F= biological waste, G= ocean and sea, H= hydrogen, I= petroleum, J= coal, K= fuel, L= radioactive, M= natural gas; N= energy sources power generation (PLSE), Hydrogen, O= PLSE biomass, P= PLSE waves, Q= PLSE wind, R= PLSE thermal, S= PLSE water, T= PLSE sun, U= PLSE nuclear, and V= PLSE geothermal.

waves (25.43%), natural gas (22.60%), underground water (22.27%), biological waste (13.80%), ocean and sea (13.47%), Hydrogen (10.54%), and radioactive (4.86%). Nevertheless, some respondents still choose petroleum (24.44%), coal (20.83%), and fuel (12.09%) as renewable energy sources, implying that they do not understand the concept of renewable energy. Regarding the types of power generation from renewable energy sources, more than ten respondents mention sun (54.01%), water (48.23%), wind (44.09%), waves (27.79%), geothermal energy (23.06%), natural gas (22.60%), nuclear (15.18%), biomass (13.99%), and Hydrogen (7.10%).

generation is utilized.

From the perspective of respondents' ideas about the disadvantages of the renewable energy utilization, it is found that item 11 < item 19 < item 10 < item 15 < item 13 < item 18 < item 16 < item 20. The respondents find it easier to agree with item 11 (creating power generation technology from renewable energy sources tends to be cheaper), item 19 (I do not know whether or not renewable energy generation will cause environmental issues in the future) than item 10 (I will not stay near the renewable energy generation), item 15 (the shutdown of renewable energy generation that had been used is costly), item 13 (renewable energy generation endangers the surrounding animals), item 16 (renewable energy generation endangers surrounding people), and item 20 (using renewable energy generation is an illogical idea).

This finding signifies that the respondents do not understand the concept of using renewable energy technology, whether or not it can lead to environmental issues in the future. They do not realize that living in a house near the renewable energy generation is trouble-free, and the generation can be shutdown with a low price after used. Interestingly, the respondents find it difficult to go with the idea that utilizing renewable energy is illogical and can damage the environment; meanwhile, other respondents more agree with the idea that they commonly have not heard of the use of renewable energy for the environment; they also assume that creating power generation technology from renewable energy sources is way more inexpensive. This brings up the fact that the prevalence of respondents' ideas is contradictive and tends to be partially comprehended.

3.3 Students' and teachers' viewpoint on the importance of using renewable energy technology

The third section of the questionnaire explored the respondents' viewpoint on the importance of the use of renewable energy from item 22 to item 29. The term "viewpoint" is defined as a "way of thinking" of the respondents based on information, perception, and observation regarding the utilization of renewable energy. Respondents who have a good structure of information will possibly present a contextual and logical way of thinking and viewpoint.

According to the Wright Map, Person-Map-Item (Figure 3), it shows that the item logit measure is $23 < 27 < 24 < 28 < 29 < 22 < 26 < 25$; it signifies the respondents' way of thinking (from left to right), stating that item 23 is way more important than item 27, 24, 28, 29, 22, 26, and 25. This finding indicates that 1) the respondents think that it is essential to use power generated from a safer technology of renewable energy generation (item 23), this technology does not endanger the surrounding people (item 27), and power consumption is available all the time (item 24); 2) respondents consider that the use of renewable energy technology is able to decrease the bad effects of global warming (item 28); 3) respondents believe that it is necessary to respect friends who concern about the environment (item 29), it is crucial to utilize a low-priced technology of renewable energy (item 22), and renewable energy technology is not dangerous to surrounding animals (item 26) and plants (item 25).

3.4 Students' and teachers' level of awareness of the use of renewable energy technology

The fourth section of the questionnaire explored the level of awareness of the respondents through item 30, 31, 32, and 33. According to the Wright Map, Person-Map-Item (Figure 3), it reveals that the item logit measure is $31 > 32 > 30 > 33$. This finding signifies that 1) respondents do not have adequate knowledge of global warming (item 31); 2) respondents rarely do the activities to protect the environment (item 32); 3) respondents do not concern about the effects of global warming on the environment (item 30); 4) respondents strongly believe that global warming is occurring now. It implies that the respondents have a low level of awareness related to the use of renewable energy technology. On the one hand, they strongly believe that global warming is taking place; on the other hand, they do not have an adequate understanding of global warming.

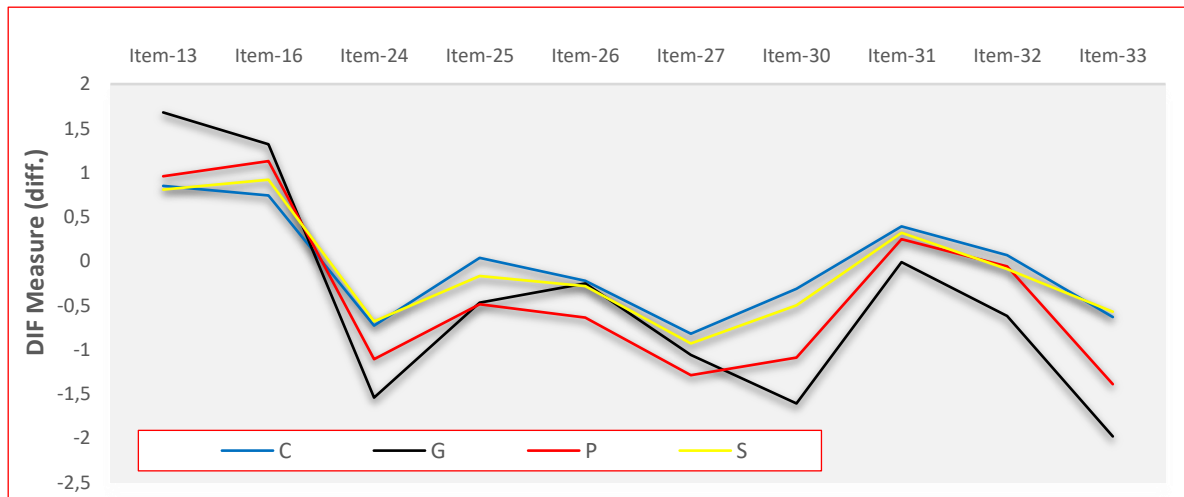


Fig. 4 Person DIF plot based on Status/Level of Education. Respondents: C = Junior High School Students, G = Teachers, P = University Students, S = Senior High School Students.

3.5 Demographic differences between students and teachers and the idea about using the technology of renewable energy

The second research question is “are there any significant differences between respondents’ demographic factors (status/level of formal education, gender, and hometown) and the prevalence of ideas in using the technology of renewable energy?”. This is elaborated using the analysis of Differential Item Functioning (DIF).

Figure 4 displays the DIF plot based on the respondents’ status and level of formal education. In terms of this factor, nine items are identified having significant differences; 1) teachers as one of the groups of respondents, compared to other groups of respondents, tend to strongly disagree with item 13 (using the technology of renewable energy can endanger surrounding animals) and item 16 (using the technology of renewable energy can endanger surrounding people); 2) teachers, compared to other groups of respondents, find item 24 important (the availability of power consumption all the time from the use of renewable energy technology). Item 25 (using the technology of renewable energy is not dangerous to plants), item 26 (using the technology of renewable energy is not dangerous to animals), and item 27 (using the technology of renewable energy is not dangerous to people) are not that essential for junior high school students; 3) for item 30 (concerning about the effects of global warming on the environment), item 31 (knowledge of global warming), item 32 (doing many activities to protect the environment), and item 33 (believing that global warming is now occurring), it is revealed that junior and senior high school students do not concern about the effects of global warming on the environment, have limited knowledge of global warming, rarely do activities that can protect the environment, and do not believe that global warming is taking place today.

Figure 5 shows the result of item DIF based on gender. Based on gender, there are 10 items identified having significant differences. Female respondents, compared to the male, find it difficult to agree with item 14 (using the technology of renewable energy can suffice power consumption for everyone), item 16 (using the technology of renewable energy is not dangerous to surrounding people), and item 18 (using the technology of renewable energy is not dangerous to surrounding plants). Nevertheless, it is way more difficult for male respondents, than the female, to go with item 19 (using the technology of renewable energy will cause serious environmental issues in the future). In contrast, male respondents, compared to the female, believe that item 25 (using the technology of renewable energy is not dangerous to surrounding plants), item 27 (using the technology of renewable energy is not dangerous to surrounding people), item 28 (using the technology of renewable energy does not give bad effects on global warming), and item 29 (respecting friends who appreciate the environment) are very important.

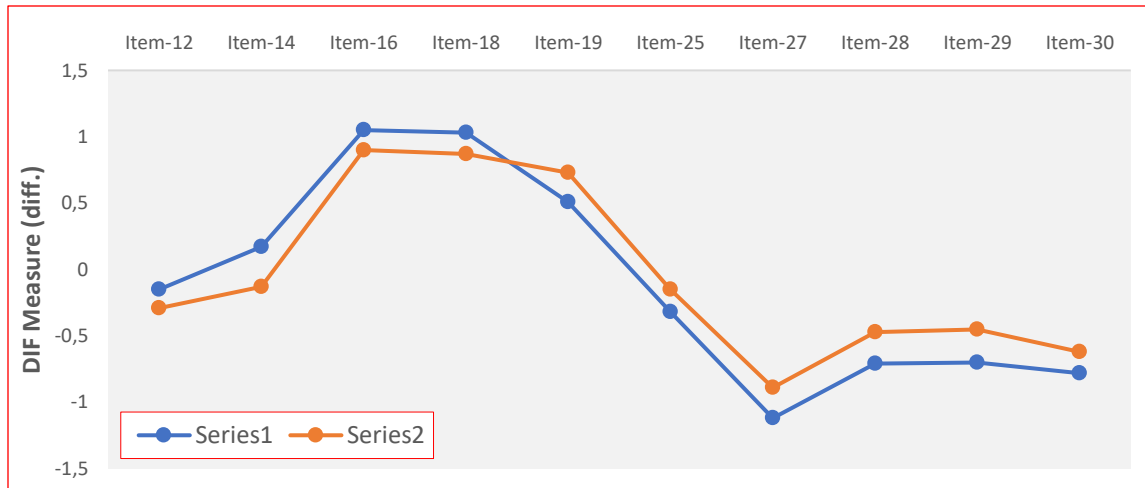


Fig. 5 Person DIF plot based on Gender. Series1 = Female, Series2 = Male.

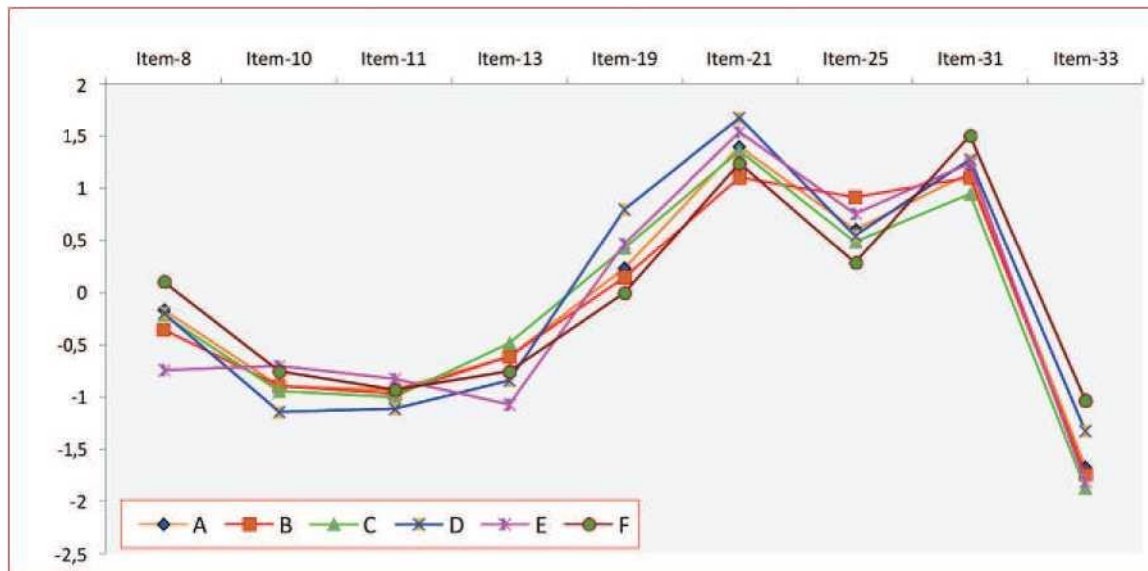


Fig. 6 Person DIF plot based on the hometown of the respondents. A=Gorontalo, B=Gorontalo Regency, C=Bone Bolango Regency, D=Boalemo Regency, E=North Gorontalo Regency, F=Pohuwato Regency.

Item 30 (the effects of global warming on the environment) gets more concern from male respondents than female respondents.

Figure 6 presents the graphics of nine items that have DIF based on respondents' hometown. Here is the detail; 1) respondents from Gorontalo cannot go with item 8 (I am willing to pay extra free as long as renewable energy is used), and only a few of them who understand the effects of global warming (item 31); 2) respondents from Gorontalo Regency do not take into account the danger of using renewable energy to the surrounding plants (item 25); 3) respondents from Boalemo Regency find it difficult to agree with item 19 (I do not know whether or not the use of renewable energy will cause environmental issues in the future) and item 21 (I believe that the effects of global warming will be decreased by using the technology of renewable energy to produce power); 4) respondents from North Gorontalo Regency strongly agree with item 8 and item 13 (the use of renewable energy is dangerous to surrounding animals), they also believe that global warming is now really occurring; 5)

respondents from Pohuwato Regency find it very difficult to go with item 8 and tend to be not knowledgeable of the effects of global warming (item 31).

4 Discussion

The purpose of this study is to explore the prevalence of students' and teachers' ideas about renewable energy. It focuses on identifying the ideas generally comprehended by students and teachers, ensuring their knowledge as well as serving as the initial information regarding students' and teachers' knowledge of renewable energy. The main premise is that a strong idea about the advantages of renewable energy and its significance do influence one's resistance, acceptance, or enthusiasm for the advantages of renewable energy (Kiliñç et al., 2009).

The first finding, regarding the advantages of using renewable energy, indicates that the safety factor is a priority; meanwhile, the willingness to pay an extra fee to utilize renewable energy is low. The second finding, related to the disadvantages of using renewable energy, shows that students and teachers assume that creating power generation technology from renewable energy sources is way more inexpensive; they also find it difficult to go with the idea that utilizing renewable energy is illogical and damages the environment. The third finding on the respondents' viewpoint on the importance of utilizing renewable energy reveals that the respondents consider it more essential to use power generated from a safer technology of renewable energy generation, it does not endanger the surrounding people, and power consumption is available all the time; compared to the factors of the cost and safety of using renewable energy, the respondents more agree with the importance of utilizing renewable energy as mentioned previously. The last finding reveals that students and teachers strongly believe the occurrence of global warming present day; yet, they admit that they have limited knowledge of global warming effects.

All findings above describe various aspects of respondents' contradictive understanding. For instance, a strong willingness to use the cheaper and safer technology of renewable energy. The respondents possibly do not understand that it requires a big investment of renewable energy technology to produce the all-time, safe, clean, and eco-friendly energy; this is what so called the misconception of the idea of renewable energy (Daniel et al., 2004). For this reason, respondents' factual ideas are that power generation technology driven by renewable energy sources is way cheaper than other technologies. Consequently, most respondents do not consent to pay an extra fee for the use of renewable energy.

In addition, a large number of respondents believe that global warming is definitely occurring right now because there are lots of socialization about the effects of global warming. Unfortunately, this fact still has not taken their concern about the surrounding environment; they even rarely carry out activities that protect the environment. This tendency is unfavorable for the acceptance of the adoption of renewable energy technology in the future.

Other ideas that tend to be negatively understood are that the respondents do not know whether or not renewable energy will lead to serious environmental issues. In consequence, they believe that it is not safe to live around the technology of power generation driven from renewable energy sources; the cost for the shutdown is pretty expensive; this technology endangers the lives of animals, plants, and human. Human safety is placed at the last level compared to animals and plants. This indicates that students and teachers commonly get the use of renewable energy wrong.

From the aspect of gender differences, the prevalence of male and female respondents' ideas are significantly different. Male respondents opine that the use of renewable energy is safer, fulfills the needs of all people and plants. The female respondents, compared to male, tend to go with the thing that renewable energy will cause serious environmental issues in the future. Male respondents, on the other hand, are very concerned with the effects of global warming on the environment. This finding signifies that male respondents are more insightful than female respondents related to the utilization of renewable energy and global warming.

Based on the hometown differences, respondents from Gorontalo are objected to spending more money on power generation technology from renewable energy sources and do not know about the effects of global

warming. This is understandable since this region commonly utilizes conventional power and the community has not yet experienced the effects of global warming, e.g., extreme weather, excessive heat, unexpected disasters. For areas outside the city, it is figured out that the respondents are not familiar to the characteristics of the use of renewable energy.

5 Conclusion

This study has reported that the students' and teachers' ideas about the use of renewable energy tend to be contradictive; this reflects a relatively low understanding of this concept. Junior and senior high school students consider that utilizing renewable energy is not essential, yet they concern about the effects of global warming. Thus, their concern about the environment tends to be apprehensive. In contrast, teachers doubt the use of renewable energy technology in producing sustainable energy that is relatively not dangerous to the surrounding people and environment. These findings, overall, show that the students and teachers lack of knowledge of the utilization of renewable energy technology. Nevertheless, this study has limitations and implications in which it is only conducted to students and teachers in Gorontalo as one of the cities in Indonesia. It is believed that other provinces have a relatively different prevalence tendency due to the variety of culture and community habits. On that ground, Indonesia needs to develop a literacy education program of the use of renewable energy at various levels of formal education.

Acknowledgement

This research was partially funded by the Directorate of Research and Community Service of Directorate General of Research and Development Strengthening of Ministry of Research, Technology, and Higher Education of the Republic of Indonesia, and USAID through the SHERA program – Centre for Development of Sustainable Region (CDSR). In 2017-2019, CDSR is led by Centre for Energy Studies – Gadjah Mada University.

References

- Acikgoz, C. (2011), Renewable energy education in Turkey, *Renewable Energy*, **36**(2), 608-611.
- Adzikri, F., Notosudjono, D., and Suhendi, D. (2014), Strategi pengembangan energi terbarukan di Indonesia. Jurnal Online Mahasiswa Program Studi Teknik Elektro, Fakultas Teknik Universitas Pakuan, Bogor, 1-13.
- Assali, A., Khatib, T., and Najjar, A. (2019), Renewable energy awareness among future generation of Palestine, *Renewable Energy*, 254-263.
- Badan Pembinaan dan Pengembangan Bahasa. (2016). Kamus Besar Bahasa Indonesia Online. Retrieved from <https://kbbi.kemdikbud.go.id/>.
- Bodzin, A. (2012). Investigating urban eighth-grade students' knowledge of energy resources, *International Journal of Science Education*, **34**(8), 1255-1275.
- Boone, W.J., Yale, M.S., and Staver, J.R. (2014), Rasch analysis in the human sciences. Springer Dordrecht Heidelberg London New York Library.
- Daniel, B., Stanisstreet, M., and Boyes, E. (2004), How can we best reduce global warming? School students' ideas and misconceptions, *International Journal of Environmental Studies*, **61**(2), 211-222.
- DeWaters, J.E. and Powers, S.E. (2011), Energy literacy of secondary students in New York State (USA): A measure of knowledge, affect, and behavior, *Energy Policy*, **39**(3), 1699-1710.
- Fisher Jr., W.P. (2007), Rating scale instrument quality criteria, *Rasch Measurement Transactions*, **21**(1), 1095.
- Guardiola, S., Gabay, G., and Moskowitz, H.R. (2009), Renewable energy; Tapping and typing the citizen's mind, *Humanomics*, **25**(4), 254-267.
- Güney, T. (2019), Renewable energy, non-renewable energy and sustainable development, *International Journal of Sustainable Development and World Ecology*, **26**(5), 389-397.
- Güven, G. and Sulun, Y. (2017), Pre-service teachers' knowledge and awareness about renewable energy, *Renewable and Sustainable Energy Reviews* **80**, 663-668.

- Bang, H.K. and Ellinger, A.E. (2000), Consumer concern, knowledge, belief, and attitude toward renewable energy: An application of the reasoned action theory, *Psychol Market*, **17**(6), 449-468.
- Johansson, M. and Laike, T. (2007), Intention to respond to local wind turbines: The role of attitudes and visual perception, *Wind Energy*, **10**(5), 435-451.
- Kandpal, T.C. and Broman, L. (2014), Renewable energy education: A global status review, *Renewable and Sustainable Energy Reviews*, **34**, 300-324.
- Kilinc, A., Stanisstreet, M., and Boyes, E. (2009), Incentives and disincentives for using renewable energy: Turkish students' ideas, *Renewable and Sustainable Energy Reviews*, **13**(5), 1089-1095.
- Kilinc, A., Stanisstreet, M., and Boyes, E. (2008), Turkish students' ideas about global warming, *International Journal of Environmental and Science Education*, **3**(2), 89-98.
- Komendantova, N., Yazdanpanah, M., and Shafiei, R. (2018), Studying young people' views on deployment of renewable energy sources in Iran through the lenses of social cognitive theory, *AIMS Energy*, **6**(2), 216-228.
- Rose, L.S. and Barton, C.A. (2012), Should great lakes city build a new power plant? How youth navigate socioscientific issues, *Journal of Research in Science Teaching*, **49**(5), 541-567.
- Linacre, J.M. (2012), A User's Guide to W I N S T E P S ® M I N I S T E P Rasch-Model Computer Programs Program Manual 3.75.0. ISBN 0-941938-03-4
- Martin, S. and Jucker, R. (2005), Educating earth-literate leaders, *Journal of Geography in Higher Education*, **29**(1), 19-29.
- Ntona, E., Arabatzis, G., and Kyriakopoulos, G.L. (2015), Energy saving: Views and attitudes of students in secondary education, *Renewable and Sustainable Energy Reviews*, **46**, 1-15.
- Nugroho, H., Fei-Lu, S., and Firmansyah. (2017), Developing renewable energy in developing countries: A lesson from Indonesia, *Energy Sources, Part B: Economics, Planning and Policy*, **12**(4), 318-325.
- Panwar, N.L., Kaushik, S.C., and Kothari, S. (2011), Role of renewable energy sources in environmental protection: A review, *Renewable and Sustainable Energy Reviews*, **15**(3), 1513-1524.
- Rahayu, S. (2017), Promoting the 21st century scientific literacy skills through innovative chemistry instruction (Vol. 020025, p. 020025). AIP Conference Proceedings, America: AIP Publishing.
- Skamp, K., Boyes, E., Stanisstreet, M., Rodriguez, M., Malandrakis, G., Fortner, R., and Yoon, H.G. (2019), Renewable and nuclear energy: An international study of students' beliefs about, and willingness to act, in relation to two energy production scenarios, *Research in Science Education*, **49**(2), 295-329.
- Sumintono, B. and Widhiarso, W. (2014), Aplikasi model Rasch untuk penelitian ilmu-ilmu sosial. In B. Trim (Ed.). Cimahi: Trim Komunikata Publishing House. Retrieved from <https://www.researchgate.net/publication/268688933%0AAplikasi>.
- Sumintono, B. and Widhiarso, W. (2015), Aplikasi pemodelan Rasch pada assessment pendidikan. Cimahi: Trim Komunikata. Retrieved from <https://www.researchgate.net/publication/282673464%0AAplikasi>.
- Sutter, A.M.K., Dauer, J.M., Kreuziger, T., Schubert, J., and Forbes, C.T. (2019), Sixth grade students' problematization of and decision-making about a wind energy socio-scientific issue, *International Research in Geographical and Environmental Education*, **0**(0), 1-15.
- The Intergovernmental Panel on Climate Change. (2018), Global warming of 1, 5oC: Special report. Intergovernmental Panel on Climate Change. Retrieved from <https://www.ipcc.ch/sr15/>.
- The United Nations Conference on Environment and Development. (1992), Environmentally sound management of solid wastes and sewage-related issues, *United Nations Sustainable Development*, 254-266.
- Tondang, R. (2019a), Will Indonesia continue to survive with fossil fuels? Retrieved from Kompas.com website: <https://ekonomi.kompas.com/read/2018/09/06/104511326/will-it-indonesia-continue-to-survive-with-fossil-fuels>.
- Tondang, R. (2019b), Increasing renewable energy, a big challenge for Indonesia. Retrieved from Kompas.com website: <https://ekonomi.kompas.com/read/2018/08/28/160220126/environmental-renewable-challenge-big-challenge-for-Indonesia?Page=all>.
- Bond, T.G. and Fox, C.M. (2015), Applying the Rasch model: Fundamental measurement in the human sciences (third edition). New York and London: Routledge Taylor & Francis Group. Retrieved from <https://www.routledge.com/Applying-the-Rasch-Model-Fundamental-Measurement-in-the-Human-Sciences/Bond-Fox/p/book/9780415833424>.
- Wolsink, M. (2007), Wind power implementation: The nature of public attitudes: Equity and fairness instead of "backyard motives.", *Renewable and Sustainable Energy Reviews*, **11**(6), 1188-1207.
- Worrell, E., Bernstein, L., Roy, J., Price, L., and Harnisch, J. (2009), Industrial energy efficiency and climate change mitigation, *Energy Efficiency*, **2**(2), 109-123.
- Yang, S.C., Tsou, M.Y., Chen, E.T., Chan, K.H., and Chang, K.Y. (2011), Statistical item analysis of the examination in anesthesiology for medical students using the Rasch model, *Journal of the Chinese Medical Association*, **74**(3), 125-129.
- Zarnikau, J. (2003), Consumer demand for "green power" and energy efficiency, *Energy Policy*, **31**(15), 1661-1672.
- Zyadin, A., Puhakka, A., Ahponen, P., Cronberg, T., and Pelkonen, P. (2012), School students' knowledge, perceptions, and attitudes toward renewable energy in Jordan, *Renewable Energy*, **45**, 78-85.